
GOVERNMENT NOTICE
GOEWERMENTSKENNISGEWING

DEPARTMENT OF TRANSPORT
DEPARTEMENT VAN VERVOER

No. 779

24 August 2007

THE SOUTH AFRICAN NATIONAL ROADS
AGENCY LIMITED

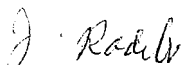
Registration No: 98/09584/06

DECLARATION AMENDMENT OF NATIONAL ROAD R526 SECTION 2

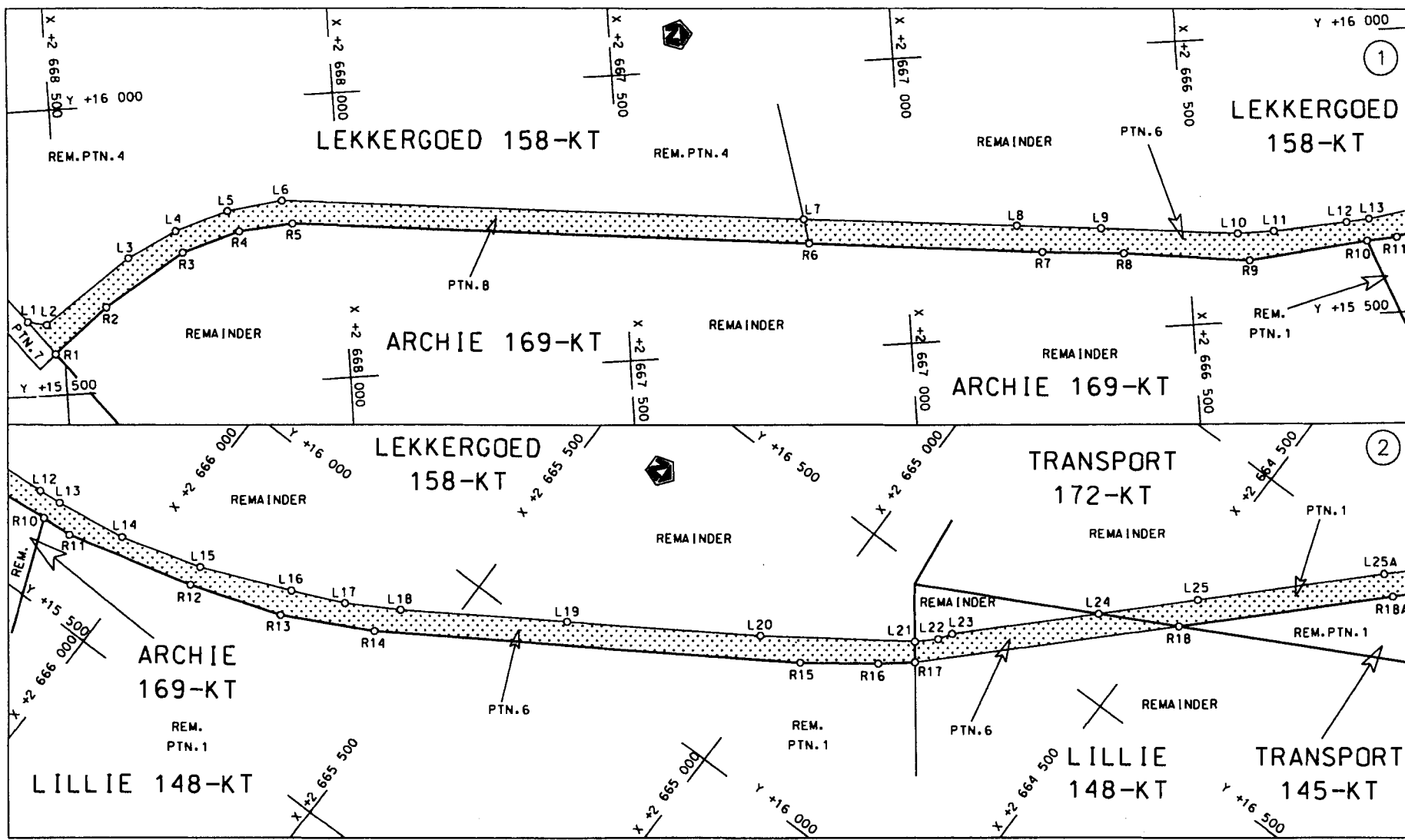
AMENDMENT OF DECLARATION No. 1229 OF 2004

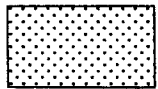
By virtue of section 40 (1)(b) of the South African National Roads Agency Limited and the National Roads Act, 1998 (Act No. 7 of 1998), I hereby amend Declaration No. 1229 of 2004 by substituting the portion from Gravelotte up to the junction with the R40 on the farm Lekkergoed 158 -KT in paragraph (VII) of the Annexure, with the subjoined sheets 1 to 10 of Plan No.P590/06.

(National Road R526 Section 2: R40 - Gravelotte)

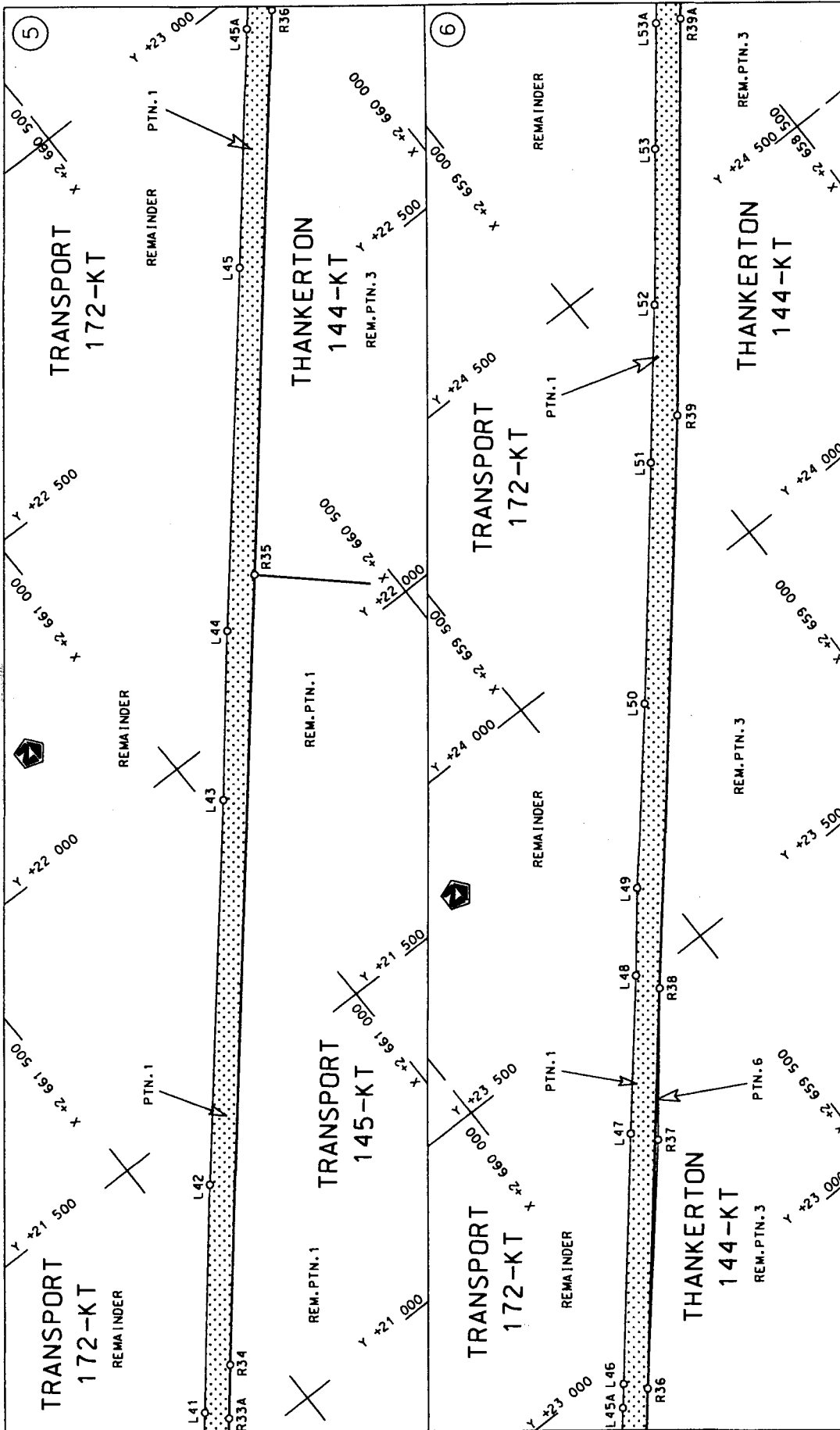


MINISTER OF TRANSPORT

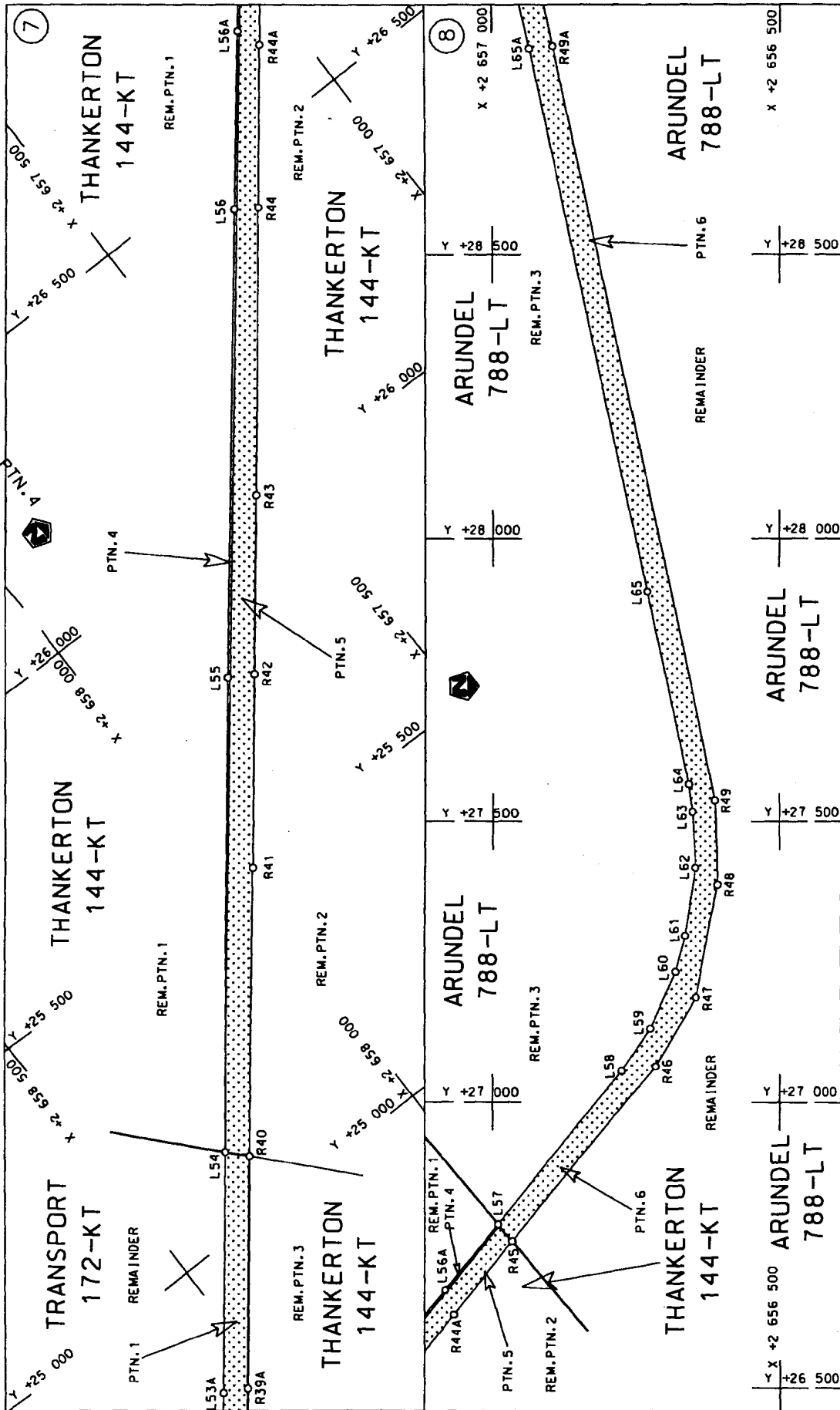


<p>Die Suid Afrikaanse Nasionale Padagentskap Beperk The South African National Roads Agency Limited</p>	<p>Die figuur getoon The figure shown</p> 	<p>steldie padreserwe voor van 'n gedeelte represents the road reserve of a portion von Nasionale Roete R526 Sektie of National Route Section</p>	<p>Vel Sheet 1 van 10 Plan P 590/06</p>
--	--	---	---

D.O.9.A

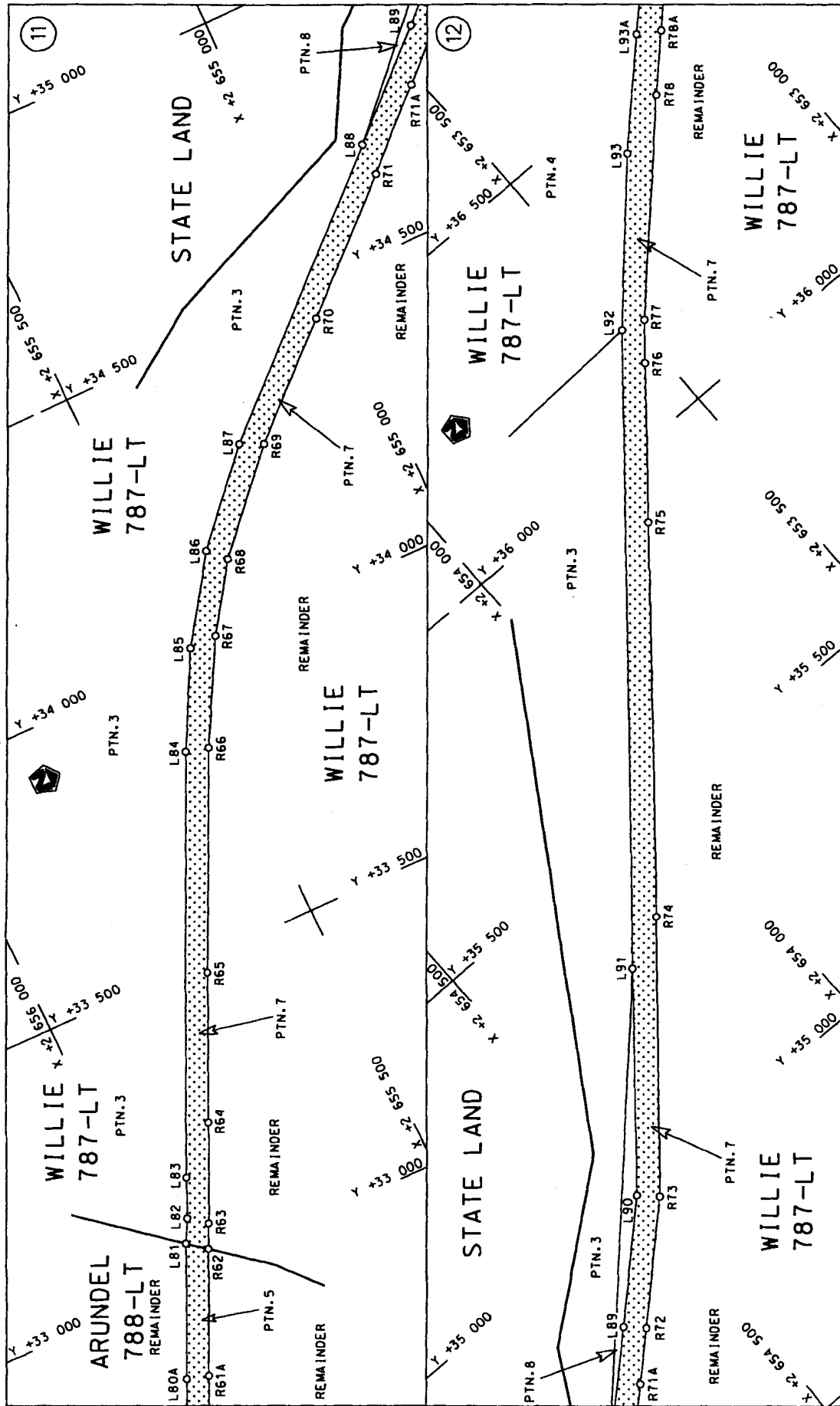


<p>Die Suid Afrikaanse Nasionale Padagentskop Beperk The South African National Roads Agency Limited</p>	<p>Die figuur getoon The figure shown</p>		<p>stel die padreserwe voor van 'n gedeelte represents the road reserve of a portion van Nasionale Roete R526 of National Route Section</p>	<p>Vel Sheet 3 of 10 Plan P 590/06</p>	<p>D.O.9.A</p>
--	---	--	---	--	----------------



Die Suid Afrikaanse Nasionale Padagentskap Beperk The South African National Roads Agency Limited	Die figuur getoon The figure shown	steldie padreserwe voor van 'n gedeelte represents the road reserve of a portion van Nasionale Roete R526 of National Route Section	Vel Sheet 4 of 10 Plan P 590/06
--	---------------------------------------	--	---------------------------------------

D.O.9.A



Die Suid Afrikaanse Nasionale Padagentskap Beperk The South African National Roads Agency Limited	Die figuur getoon The figure shown	steldie padreserwe voor van 'n gedeelte represents the road reserve of a portion van Nasionale Roete R526 of National Route
Vel Sheet 6 of 10	2	Plan P 590/06

D.O.9.A

PADRESERWE KOÖRDINATE				ROAD RESERVE CO-ORDINATES			
LINKERKANT/LEFT HAND SIDE				REGTERKANT/RIGHT HAND SIDE			
	Y	X	WG 31		Y	X	
L1	15 631.95	2 668 561.50		R1	15 573.03	2 668 515.72	
L2	15 624.78	2 668 528.39		R2	15 649.28	2 668 422.47	
L3	15 732.80	2 668 378.74		R3	15 736.78	2 668 282.59	
L4	15 774.85	2 668 293.20		R4	15 767.37	2 668 181.22	
L5	15 804.20	2 668 199.18		R5	15 774.86	2 668 085.86	
L6	15 816.09	2 668 102.13		R6	15 684.88	2 667 169.77	
L7	15 727.25	2 667 176.57		R7	15 644.43	2 666 757.96	
L8	15 692.82	2 666 800.00		R8	15 633.25	2 666 614.49	
L9	15 679.24	2 666 651.49		R9	15 608.32	2 666 394.74	
L10	15 656.71	2 666 412.45		R10	15 630.07	2 666 185.26	
L11	15 656.97	2 666 349.23		R11	15 633.35	2 666 131.79	
L12	15 664.41	2 666 219.72		R12	15 691.86	2 665 910.93	
L13	15 667.81	2 666 179.58		R13	15 746.43	2 665 752.50	
L14	15 686.14	2 666 056.61		R14	15 825.20	2 665 602.16	
L15	15 727.17	2 665 915.91		R15	16 240.27	2 664 967.97	
L16	15 791.94	2 665 762.65		R16	16 322.92	2 664 856.62	
L17	15 832.27	2 665 673.70		R17	16 363.68	2 664 806.86	
L18	15 883.06	2 665 587.83		R18	16 695.98	2 664 473.44	
L19	16 046.75	2 665 339.29		R19	17 092.24	2 664 077.48	
L20	16 235.26	2 665 053.01		R20	17 186.64	2 663 990.69	
L21	16 392.48	2 664 828.90		R21	17 370.65	2 663 843.21	
L22	16 420.75	2 664 798.69		R22	18 667.04	2 663 059.92	
L23	16 442.86	2 664 784.68		R23	18 814.38	2 662 994.47	
L24	16 628.47	2 664 599.37		R24	18 884.51	2 662 967.01	
L25	16 753.43	2 664 474.61		R25	19 140.16	2 662 876.40	
L26	17 119.12	2 664 109.37		R26	19 244.10	2 662 852.68	
L27	17 196.78	2 664 036.84		R27	19 328.77	2 662 817.20	
L28	17 366.53	2 663 897.71		R28	19 540.32	2 662 737.40	
L29	17 500.48	2 663 806.15		R29	19 808.43	2 662 611.62	
L30	17 752.44	2 663 652.53		R30	20 086.40	2 662 444.28	
L31	18 057.60	2 663 468.83		R31	20 115.98	2 662 420.89	
L32	18 352.03	2 663 292.07		R32	20 213.16	2 662 330.90	
L33	18 688.02	2 663 096.89		R33	20 763.10	2 661 871.64	
L34	18 834.75	2 663 031.75		R34	21 127.94	2 661 568.01	
L35	19 658.63	2 662 733.87		R35	22 184.70	2 660 685.23	
L36	19 865.37	2 662 634.59		R36	22 938.10	2 660 056.87	
L37	20 103.42	2 662 473.92		R37	23 264.62	2 659 777.93	
L38	20 242.35	2 662 361.20		R38	23 471.95	2 659 611.62	
L39	20 595.56	2 662 066.41		R39	24 237.21	2 658 973.37	
L40	20 788.38	2 661 905.21		R40	25 092.51	2 658 288.36	
L41	21 090.26	2 661 653.98		R41	25 492.13	2 657 968.06	
L42	21 392.22	2 661 404.07		R42	25 761.46	2 657 754.52	
L43	21 908.15	2 660 970.03		R43	26 008.50	2 657 557.72	
L44	22 135.90	2 660 782.78		R44	26 405.12	2 657 243.69	
L45	22 619.37	2 660 376.56		R45	26 757.57	2 656 965.20	
L46	22 970.14	2 660 085.17		R46	27 064.10	2 656 717.92	
L47	23 302.23	2 659 808.38		R47	27 186.80	2 656 647.88	
L48	23 514.69	2 659 630.35		R48	27 388.54	2 656 609.75	
L49	23 634.36	2 659 534.33		R49	27 538.05	2 656 614.56	
L50	23 878.29	2 659 327.52		R50	29 986.67	2 657 132.28	
L51	24 201.12	2 659 059.83		R51	30 099.96	2 657 149.19	

Vel	8	Van	10	P590/06
Sheet		of		

PADRESERWE KOÖRDINATE				ROAD RESERVE CO-ORDINATES			
LINKERKANT/LEFT HAND SIDE				REGTERKANT/RIGHT HAND SIDE			
	Y	X	WG 31		Y	X	
L52	24 412.44	2 658 885.49		R52	30 196.82	2 657 152.85	
L53	24 623.13	2 658 717.96		R53	30 300.25	2 657 146.06	
L54	25 124.05	2 658 316.98		R54	30 398.50	2 657 129.23	
L55	25 784.40	2 657 793.67		R55	30 494.34	2 657 102.52	
L56	26 428.54	2 657 278.32		R56	30 589.87	2 657 064.82	
L57	26 786.86	2 656 989.76		R57	31 582.45	2 656 597.86	
L58	27 056.55	2 656 775.63		R58	31 710.09	2 656 537.94	
L59	27 131.27	2 656 727.34		R59	32 089.09	2 656 360.31	
L60	27 232.67	2 656 683.92		R60	32 219.76	2 656 298.65	
L61	27 296.70	2 656 666.54		R61	32 618.60	2 656 110.66	
L62	27 418.17	2 656 648.99		R62	33 031.66	2 655 916.69	
L63	27 516.77	2 656 654.55		R63	33 072.07	2 655 896.78	
L64	27 566.36	2 656 661.19		R64	33 231.19	2 655 821.76	
L65	27 906.00	2 656 733.03		R65	33 474.92	2 655 708.53	
L66	29 704.14	2 657 114.18		R66	33 836.65	2 655 537.61	
L67	29 992.89	2 657 175.27		R67	34 011.86	2 655 442.12	
L68	30 091.48	2 657 190.34		R68	34 126.18	2 655 364.29	
L69	30 190.95	2 657 194.30		R69	34 283.46	2 655 222.74	
L70	30 291.82	2 657 187.66		R70	34 445.58	2 655 046.36	
L71	30 389.21	2 657 172.27		R71	34 631.73	2 654 844.62	
L72	30 485.98	2 657 147.08		R72	34 816.06	2 654 647.79	
L73	30 579.89	2 657 114.21		R73	34 975.43	2 654 478.31	
L74	30 941.13	2 656 943.96		R74	35 355.51	2 654 156.67	
L75	31 300.50	2 656 774.23		R75	35 892.18	2 653 710.31	
L76	31 598.44	2 656 633.77		R76	36 108.58	2 653 529.87	
L77	31 729.22	2 656 572.91		R77	36 167.46	2 653 480.83	
L78	32 089.61	2 656 404.94		R78	36 453.65	2 653 204.86	
L79	32 245.81	2 656 331.87		R79	36 706.69	2 652 951.01	
L80	32 637.76	2 656 144.25		R80	36 958.63	2 652 696.93	
L81	33 056.97	2 655 948.10		R81	37 089.15	2 652 565.30	
L82	33 096.40	2 655 926.81		R82	37 342.04	2 652 310.32	
L83	33 161.33	2 655 898.06		R83	37 594.87	2 652 055.04	
L84	33 847.14	2 655 576.55		R84	37 859.05	2 651 786.24	
L85	34 010.61	2 655 490.69		R85	37 892.88	2 651 752.03	
L86	34 154.99	2 655 392.31		R86	37 903.73	2 651 741.09	
L87	34 301.64	2 655 260.96		R87	38 367.29	2 651 278.11	
L88	34 688.06	2 654 843.81		R88	38 685.24	2 651 000.32	
L89	34 843.07	2 654 676.47		R89	38 813.13	2 650 874.35	
L90	35 002.90	2 654 506.97		R90	39 141.55	2 650 552.88	
L91	35 311.16	2 654 248.78		R91	39 364.26	2 650 334.37	
L92	36 178.58	2 653 522.26		R92	39 431.06	2 650 269.24	
L93	36 407.47	2 653 311.54		R93	39 437.94	2 650 280.77	
L94	36 992.17	2 652 721.90		R94	39 513.52	2 650 206.66	
L95	37 101.35	2 652 609.27		R95	39 546.79	2 650 175.19	
L96	37 331.69	2 652 377.73		R96	39 593.79	2 650 138.09	
L97	37 626.78	2 652 078.35		R97	39 745.09	2 650 061.79	
L98	37 893.94	2 651 807.45		R98	39 786.09	2 650 033.49	
L99	38 141.47	2 651 557.27		R99	39 825.79	2 650 006.29	
L100	38 394.25	2 651 308.11		R100	39 821.29	2 649 996.19	
L101	38 586.07	2 651 145.19		R101	39 914.29	2 649 929.69	
L102	38 616.07	2 651 118.46		R102	39 959.37	2 649 897.39	

Vel	9	Van	10	P590/06
Sheet		of		

PADRESERWE KOÖRDINATE				/	ROAD RESERVE CO-ORDINATES	
LINKERKANT/LEFT HAND SIDE					REGTERKANT/RIGHT HAND SIDE	
	Y	X	WG 31		Y	X
L103	38 842.70	2 650 901.67				
L104	39 118.69	2 650 631.51				
L105	39 311.06	2 650 441.91				
L106	39 424.97	2 650 332.70				
L107	39 454.02	2 650 305.78				
L108	39 579.68	2 650 189.30				
L109	39 660.28	2 650 136.73				
L110	39 797.11	2 650 055.43				
L111	39 822.00	2 650 038.07				
L112	39 953.70	2 649 946.25				
L113	39 977.88	2 649 928.97				

Vel	10	Van	10	P590/06
Sheet		of		