
GOVERNMENT NOTICE
GOEWERMENTSKENNISGEWING

DEPARTMENT OF TRANSPORT
DEPARTEMENT VAN VERVOER

No. 758

24 August 2007

THE SOUTH AFRICAN NATIONAL ROADS
AGENCY LIMITED

Registration No: 98/09584/06

DECLARATION AMENDMENT OF NATIONAL ROAD N12 SECTION 15

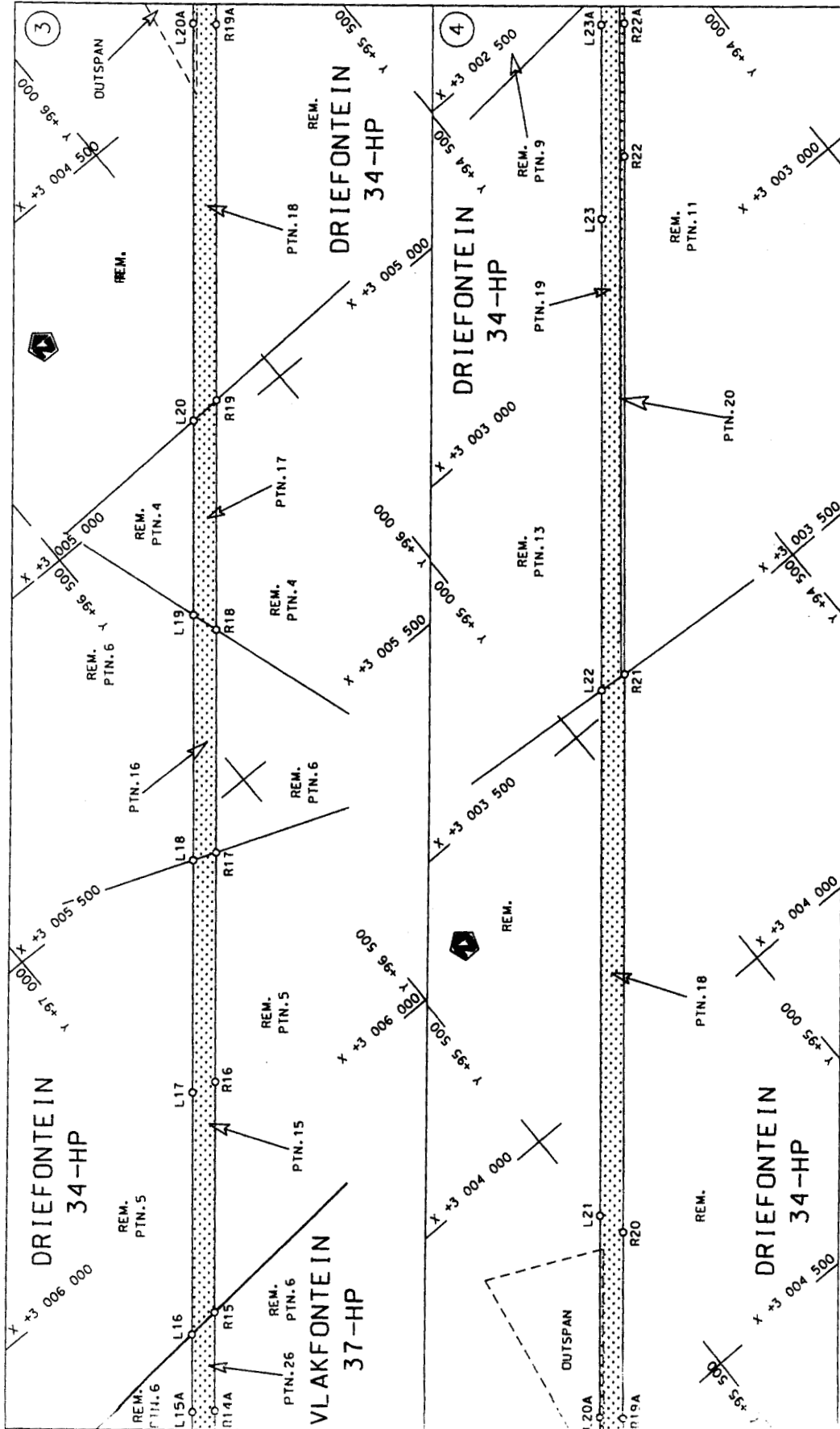
AMENDMENT OF DECLARATION No. 730 OF 2005

By virtue of section 40 (1)(b) of the South African National Roads Agency Limited and the National Roads Act, 1998 (Act No. 7 of 1998), I hereby amend Declaration No. 730 of 2005, by substituting paragraph (IV) of the annexure thereto with the subjoined sheets 1 to 19 of Plan P596/06.

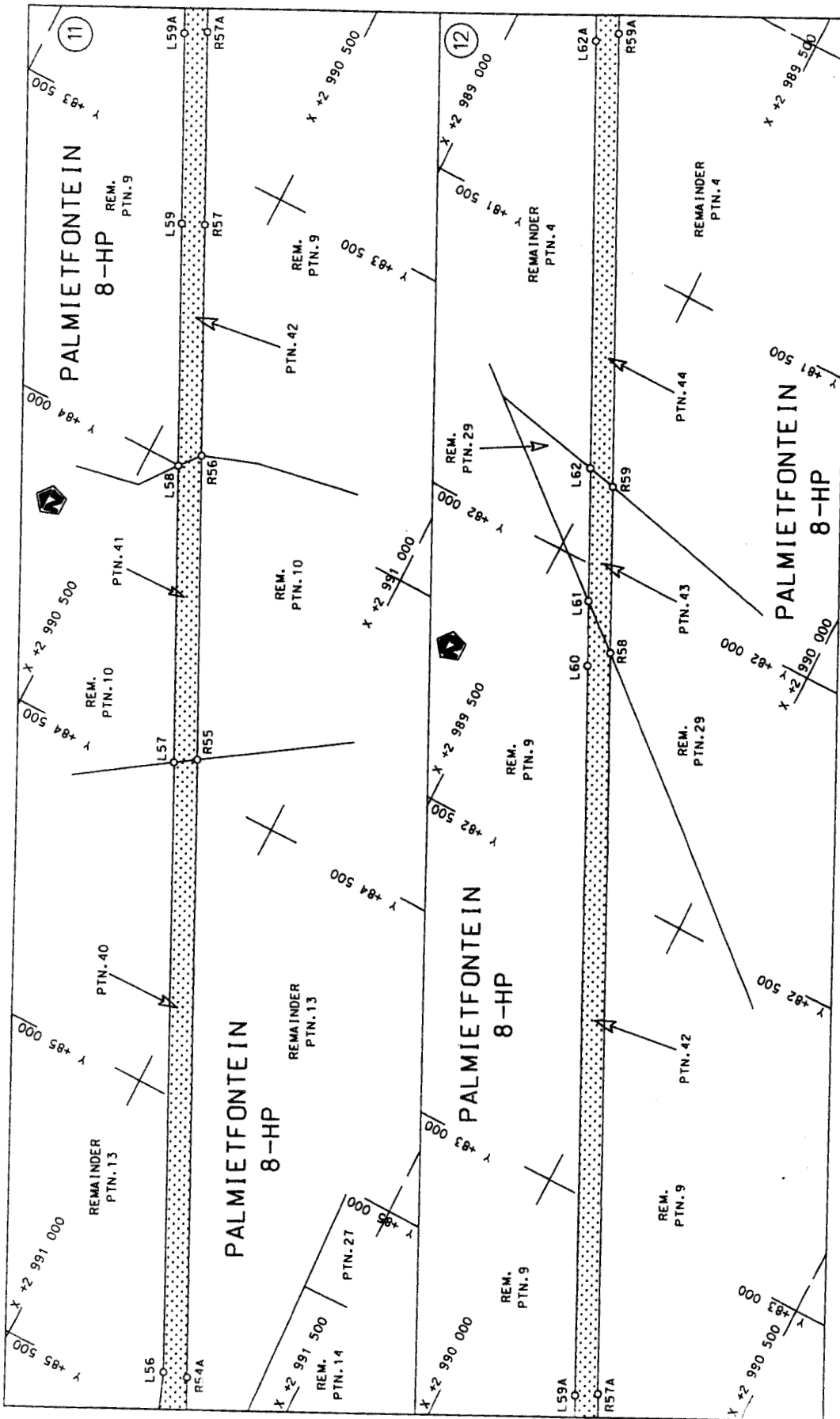
(National Road N12 Section 15: Wolmaransstad - Klerksdorp)



MINISTER OF TRANSPORT

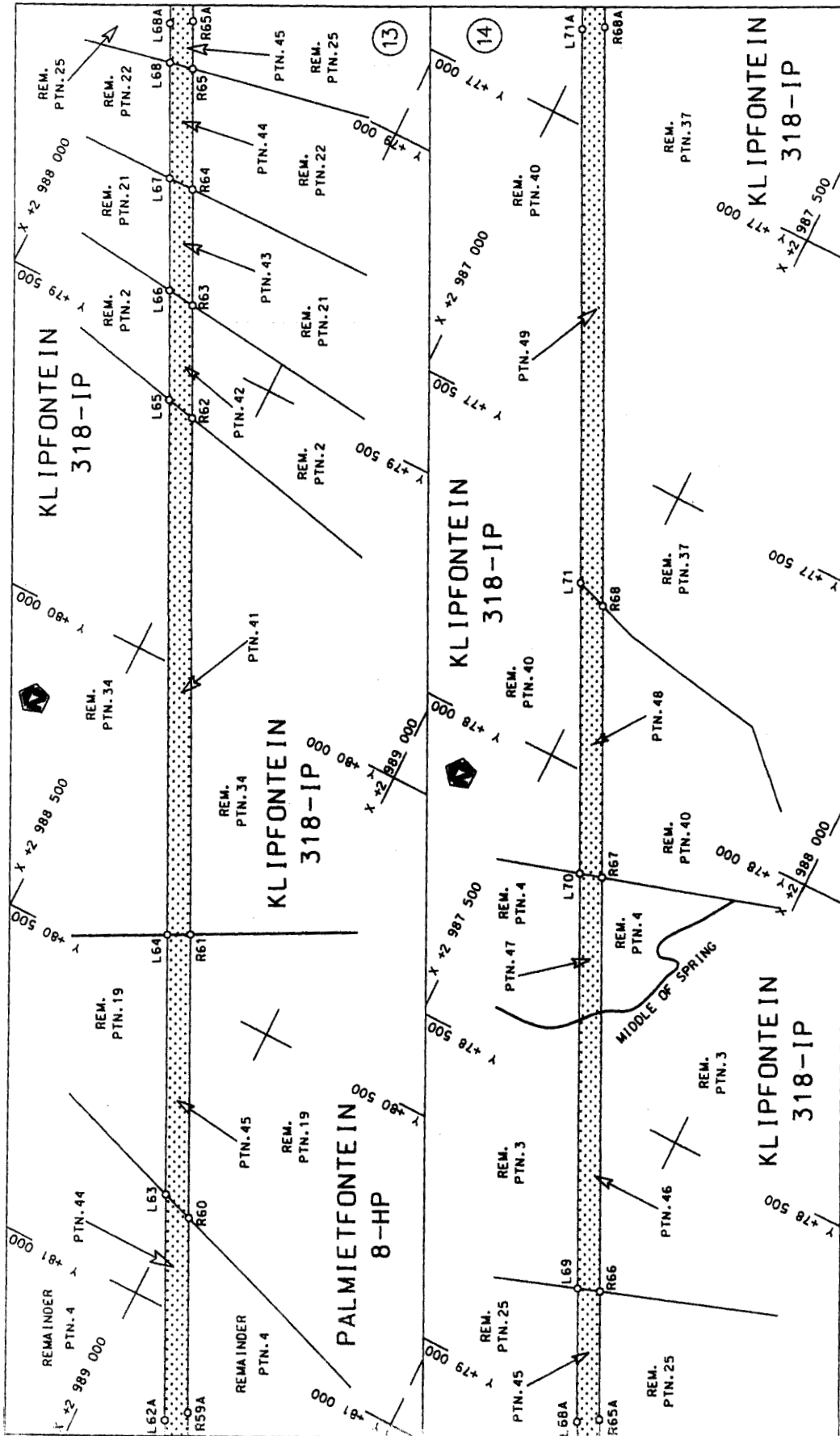


<p>Die Suid Afrikaanse Nasionale Padogentskap Beperk The South African National Roads Agency Limited</p>	<p>Die figuur getoon The figure shown</p>	<p>stel die padreserwe voor van 'n gedeelte represents the road reserve of a portion van Nasionale Roete N12 of National Route</p>	<p>15</p>	<p>Van Sheet 2 of 19</p>	<p>Plan P 596/06</p>
--	---	--	-----------	------------------------------	----------------------



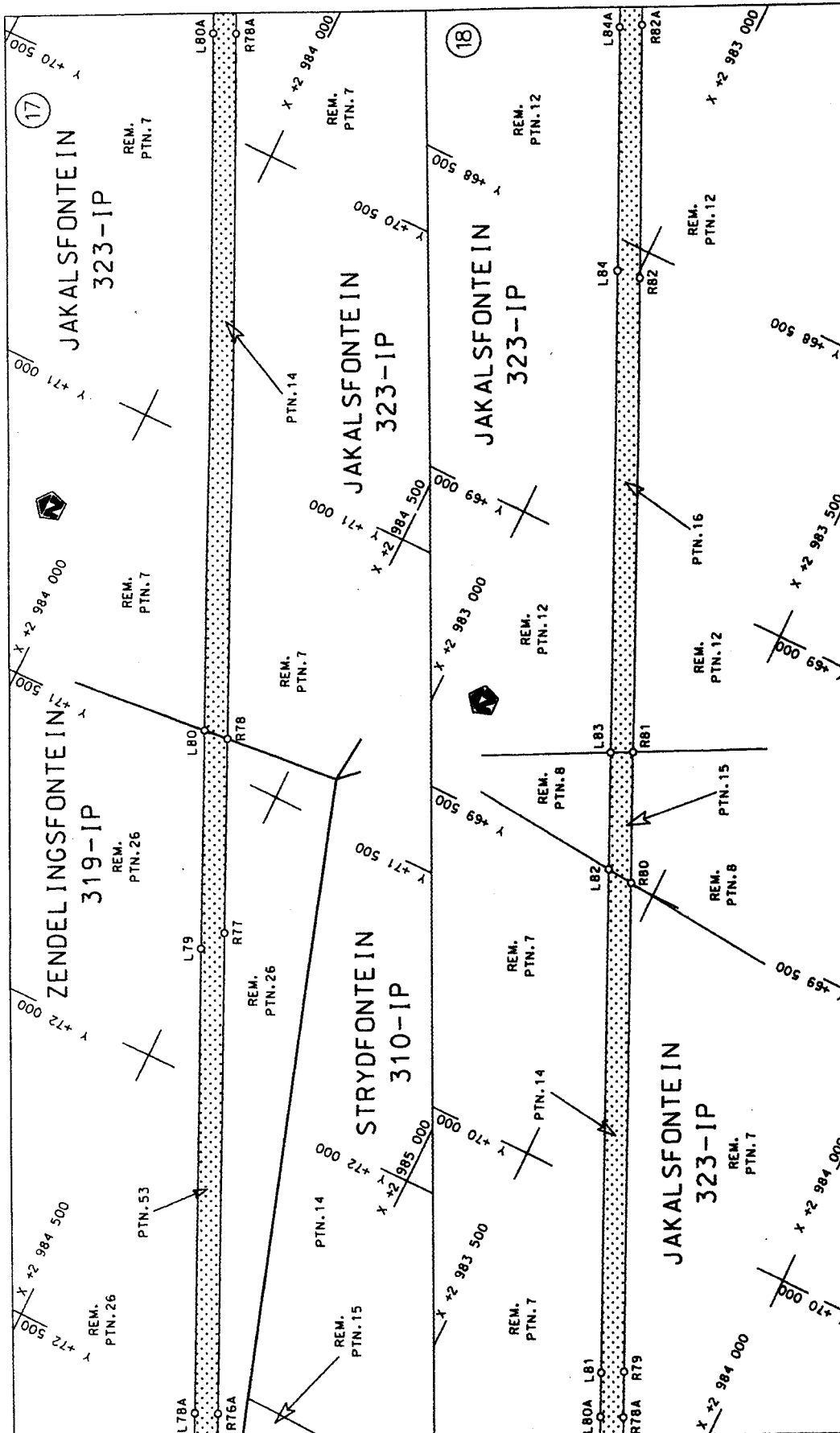
<p>Die Suid Afrikaanse Nasionale Padogentskap Beperk The South African National Roads Agency Limited</p>	<p>Die figuur getoon The figure shown</p>	<p>stelt die padreserwe voor van 'n gedeelte represents the road reserve of a portion van Nasionale Roete N12 of National Route</p>	<p>Vel Sheet 6 of 19 Plan P 596/06</p>
		<p>15</p> <p>Seksie Section</p>	

D.O.9.A



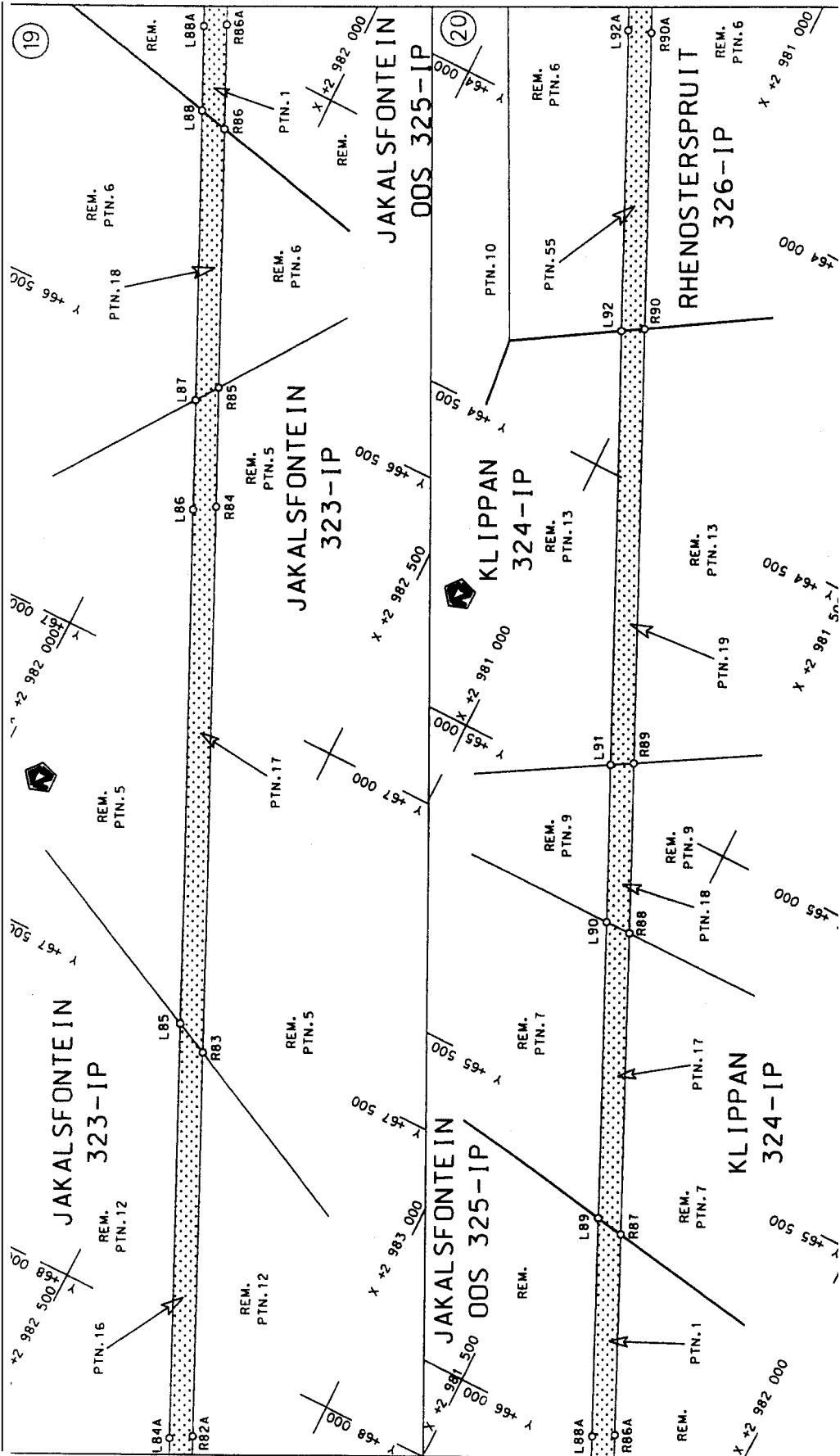
<p>Die Suid Afrikaanse Nasionale Padagentskap Beperk The South African National Roads Agency Limited</p>	<p>Die figuur getoon The figure shown</p>	<p>Vel Sheet 7 of 19 Plan P 596/06</p>
<p>stel die padreserwe voor van 'n gedeelte represents the road reserve of a portion van Nasionale Roete N12 of National Route</p>		<p>15 Section</p>

D.O.9.A



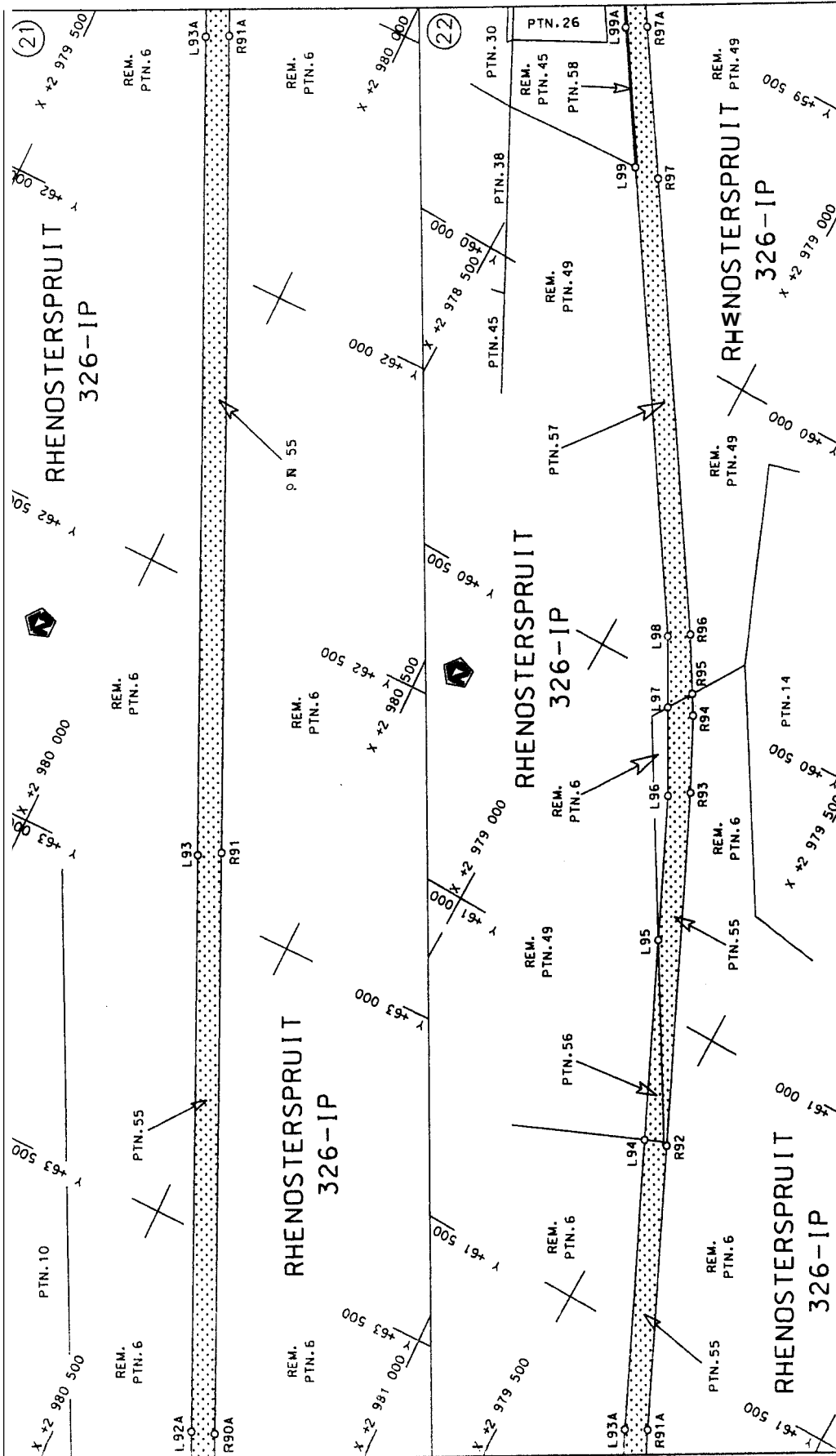
<p>Die Suid-Afrikaanse Nasionale Padoigntskop Beperk The South African National Roads Agency Limited</p>	<p>Die figuur getoon The figure shown</p>	<p>stelt die padre: rwe v of van 'n ge-eeste represents the road & erve of a portion van Nasionale Rote N12 of Natio Route Section</p>	<p>Sheet 9 of 19 Plan P 596/06</p>
--	---	--	--

H.U.S.A

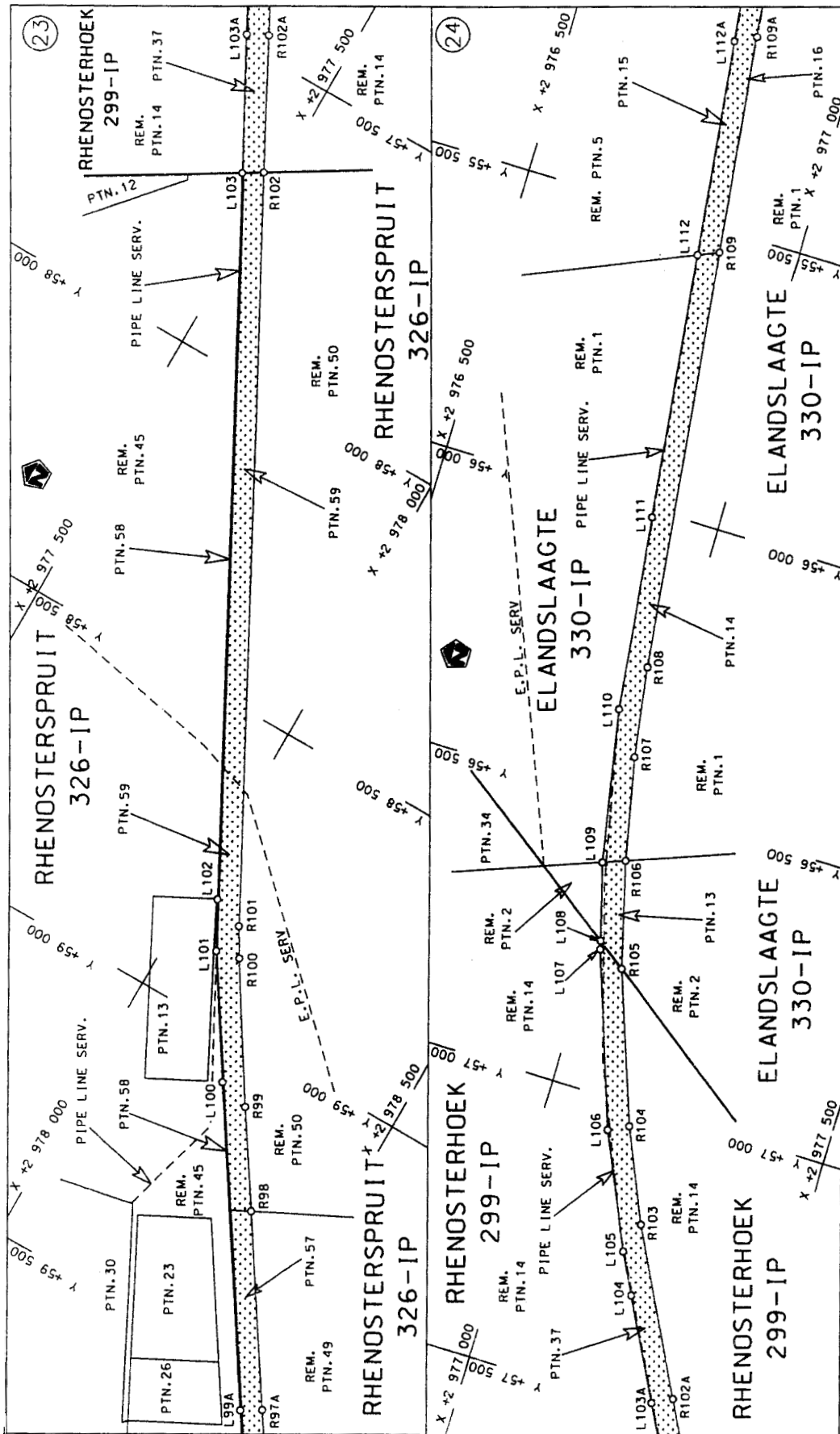


<p>Die Suid Afrikaanse Nasionale Padagentskap Beperk The South African National Roads Agency Limited</p>	<p>Die figuur getoon The figure shown</p> <p>Die stippleerde gebied represents the road reserve of a portion van Nasionale Roete N12 of National Route</p>	<p>Vel Sheet 10 of 19</p> <p>Plan P 596/06</p>
--	--	--

D.O.9.A

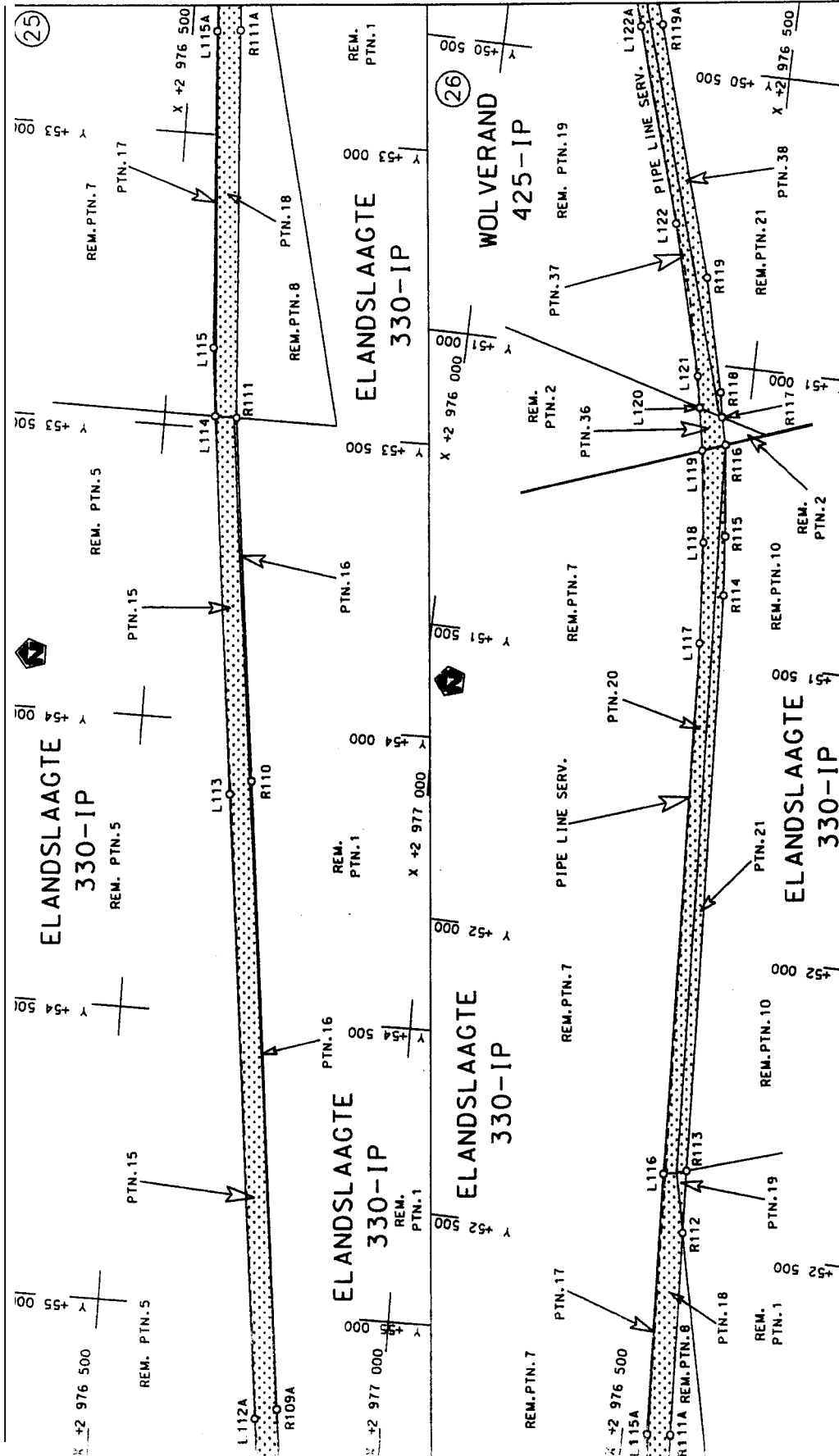


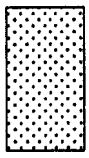
D.O.9.A



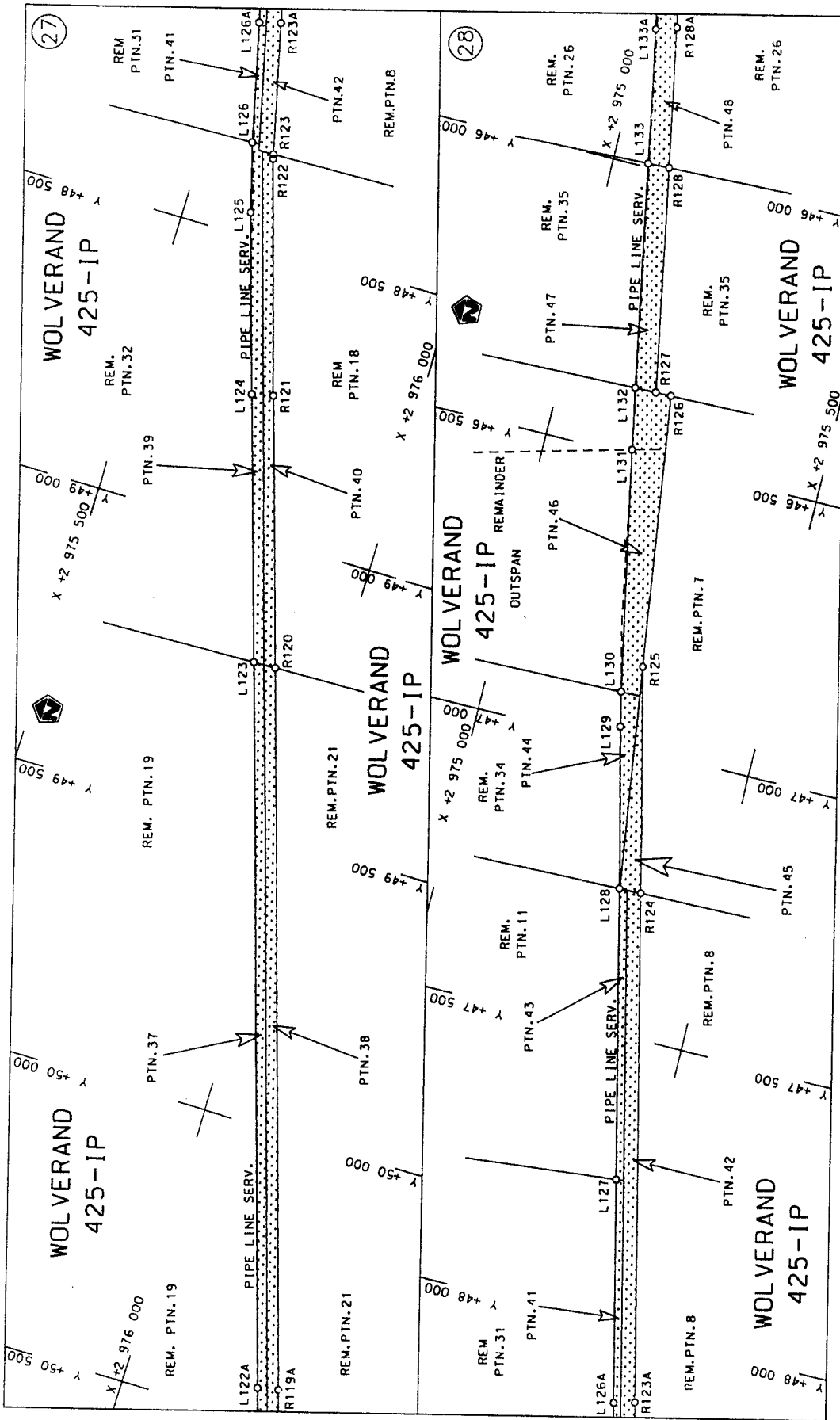
<p>Die Suid Afrikaanse Nasionale Padagentskap Beperk The South African National Roads Agency Limited</p>	<p>Die figuur getoon The figure shown</p>	<p>steldie padreserwe voor van 'n gedeelte represents the road reserve of a portion van Nasionale Roete N12 of National Route</p>	<p>Vel Sheet 12 of 19 Plan P 596/06</p>
--	---	---	---

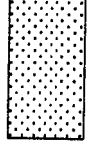
D.O.9.A



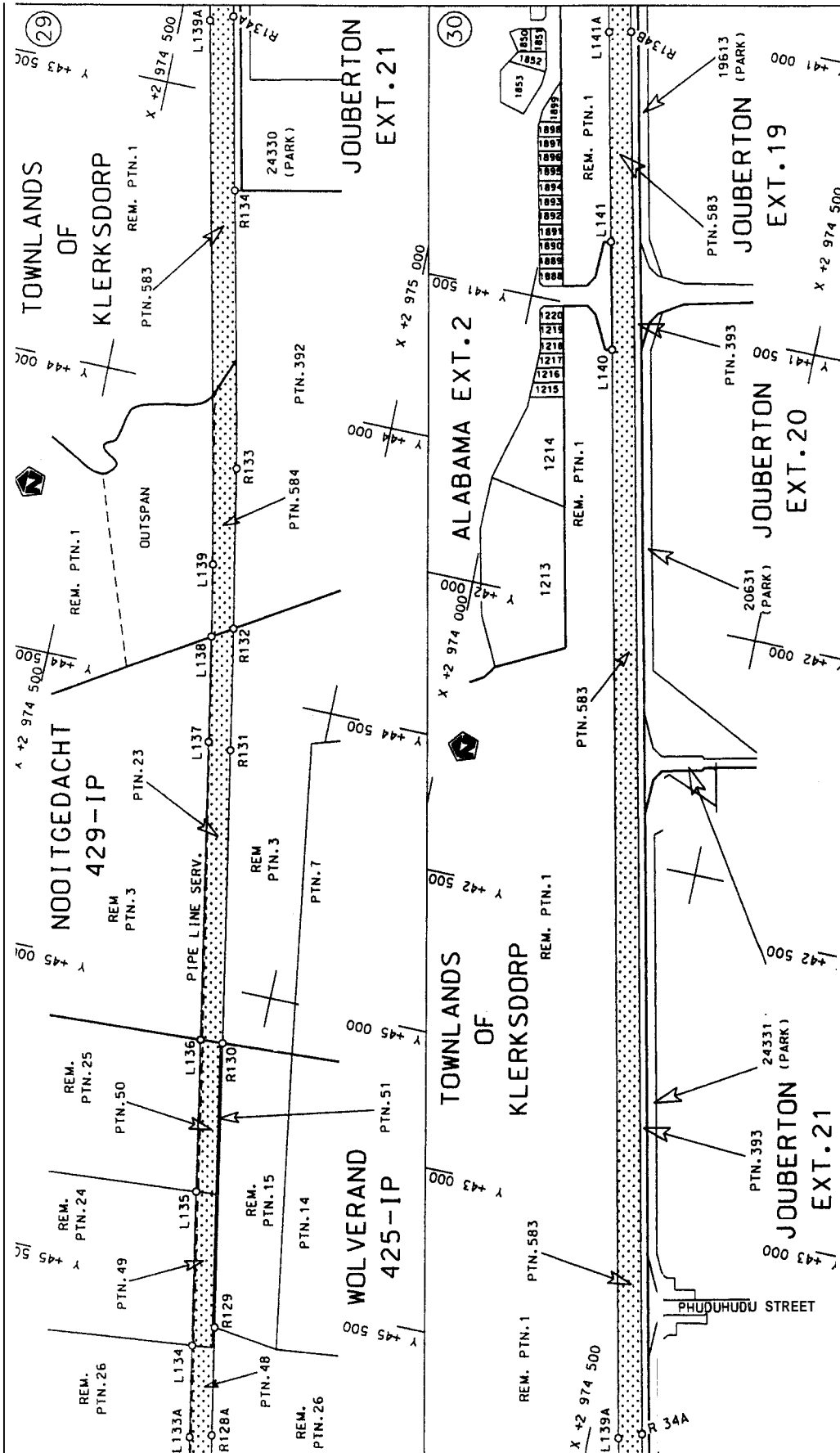
Die Suid Afrikaanse Nasionale Padagentskap Beperk The South African National Roads Agency Limited	Die figuur getoon The figure shown		steldie padreserwe voor van 'n gedeelte represents the road reserve of a portion van Nasionale Roete N12 of National Route Section	
			15	15
			Sheet 13 of 19	VERI
			Plan P 596/06	

D.O.94



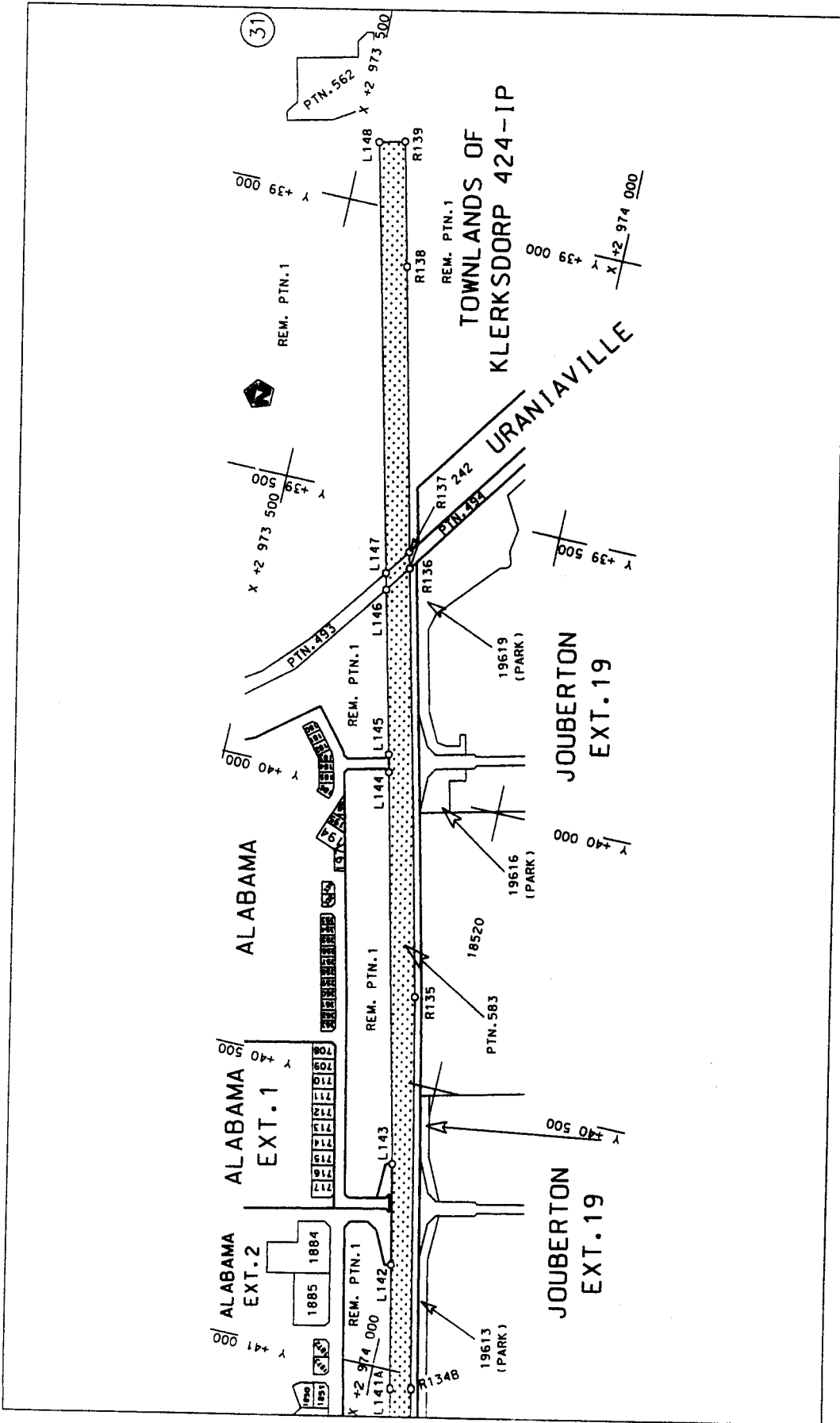
<p>Die Suid Afrikaanse Nasionale Padagentskap Beperk The South African National Roads Agency Limited</p>	<p>Die figuur getoon The figure shown</p> 	<p>stelt die padreserwe voor van 'n gedeelte represents the road reserve of a portion van Nasionale Roete N12 of National Route</p>	<p>Vel van 19 Sheet 14 of Plan P 596/06</p>
--	---	---	---

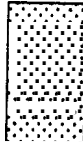
D.O.9.A



<p>Die Suid Af ikaanse Nasionale Padoulynt-kop Beperk The South African National Roads Agency Limited</p>	<p>Die figuur getoon The figure shown</p>	<p>s eldie padreserwe v or van 'n gedeelte represents the ad eserve of a portion van Nasionale R te N12 Seksie Section</p>	<p>Wel Sheet 15 of 19 Plan P 596/06</p>
---	---	--	---

D.O.9.A



Die Suid Afrikaanse Nasionale Padogentskap Beperk The South African National Roads Agency Limited		Die figuur getoon The figure shown		stel die pc represent van Nasio of Nationa	we ood iete	Vel Sheet Plan	van of P	19 596/06
--	--	---------------------------------------	---	---	-------------------	----------------------	----------------	--------------

1000

PADRESERWE KOORDINATE				/	ROAD RESERVE CO-ORDINATES			
LINKERKANT/LEFT HAND SIDE					REGTERKANT/RIGHT HAND SIDE			
	Y	X	WG	27		Y	X	
L1	100 127.17	3 009 918.27			R1	100 134.47	3 009 974.95	
L2	100 074.51	3 009 895.77			R2	100 037.66	3 009 923.10	
L3	99 979.34	3 009 844.76			R3	99 958.55	3 009 878.86	
L4	99 910.16	3 009 800.27			R4	99 863.70	3 009 818.41	
L5	99 814.39	3 009 726.53			R5	99 775.15	3 009 747.51	
L6	99 802.80	3 009 717.60			R6	99 694.83	3 009 670.36	
L7	99 723.66	3 009 642.69			R7	99 676.06	3 009 649.12	
L8	99 651.62	3 009 561.34			R8	99 621.14	3 009 586.93	
L9	99 587.66	3 009 474.64			R9	99 554.52	3 009 496.91	
L10	99 393.14	3 009 185.53			R10	99 347.07	3 009 188.52	
L11	98 649.70	3 008 080.49			R11	99 067.46	3 008 772.85	
L12	98 566.98	3 007 957.53			R12	98 173.58	3 007 444.01	
L13	98 187.61	3 007 393.65			R13	98 113.92	3 007 360.15	
L14	98 145.77	3 007 336.09			R14	98 049.80	3 007 279.31	
L15	98 080.37	3 007 253.56			R15	97 131.02	3 006 180.45	
L16	97 186.58	3 006 184.60			R16	96 874.52	3 005 873.68	
L17	96 917.16	3 005 862.37			R17	96 618.14	3 005 566.98	
L18	96 657.42	3 005 551.61			R18	96 367.96	3 005 267.71	
L19	96 382.21	3 005 222.34			R19	96 111.46	3 004 960.87	
L20	96 164.98	3 004 962.44			R20	95 486.74	3 004 213.56	
L21	95 499.37	3 004 166.09			R21	94 863.68	3 003 468.24	
L22	94 912.74	3 003 464.62			R22	94 286.22	3 002 777.46	
L23	94 386.39	3 002 835.24			R23	94 073.95	3 002 523.61	
L24	94 129.51	3 302 527.89			R24	93 191.02	3 001 467.71	
L25	93 243.18	3 001 467.40			R25	92 933.50	3 001 159.74	
L26	92 957.05	3 001 125.06			R26	92 247.21	3 000 339.18	
L27	92 260.21	3 000 292.18			R27	91 873.85	2 999 892.77	
L28	91 904.50	2 999 867.04			R28	91 809.74	2 999 812.08	
L29	91 843.23	2 999 789.74			R29	91 749.88	2 999 728.25	
L30	91 783.81	2 999 706.49			R30	91 259.43	2 999 002.60	
L31	91 314.06	2 999 011.52			R31	91 057.14	2 998 703.31	
L32	91 104.47	2 998 701.45			R32	90 573.42	2 997 987.61	
L33	90 603.66	2 997 960.52			R33	90 086.44	2 997 267.10	
L34	90 099.83	2 997 215.12			R34	89 720.66	2 996 725.91	
L35	89 781.99	2 996 744.91			R35	89 233.91	2 996 006.72	
L36	89 747.68	2 996 694.14			R36	89 090.22	2 995 794.40	
L37	89 253.74	2 995 963.20			R37	88 859.62	2 995 453.69	
L38	89 152.41	2 995 813.26			R38	88 529.96	2 994 964.31	
L39	88 849.04	2 995 364.32			R39	88 419.63	2 994 794.76	
L40	88 565.35	2 994 944.51			R40	88 264.05	2 994 547.00	
L41	88 454.42	2 994 775.03			R41	87 647.48	2 993 565.06	
L42	88 294.53	2 994 520.38			R42	87 429.47	2 993 217.85	
L43	87 691.42	2 993 559.82			R43	87 206.07	2 992 861.92	
L44	87 455.04	2 993 183.35			R44	87 130.84	2 992 750.68	
L45	87 240.11	2 992 840.91			R45	87 102.65	2 992 714.55	
L46	87 150.58	2 992 703.99			R46	87 048.25	2 992 644.82	
L47	87 078.62	2 992 618.69			R47	86 958.62	2 992 544.76	
L48	86 987.32	2 992 516.99			R48	86 862.48	2 992 450.95	
L49	86 889.31	2 992 421.40			R49	86 059.75	2 991 719.45	
L50	86 248.11	2 991 837.20			R50	85 946.82	2 991 622.98	
L51	86 076.51	2 991 680.85			R51	85 837.48	2 991 542.15	

Vel	17	Van	19	P596/06
Sheet		of		

PADRESERWE KOÖRDINATE				ROAD RESERVE CO-ORDINATES				
LINKERKANT/LEFT HAND SIDE				REGTERKANT/RIGHT HAND SIDE				
	Y	X	WG 27		Y	X		
L52	86 013.11	2 991 625.85		R52	85 722.28	2 991 469.05		
L53	85 886.83	2 991 519.95		R53	85 693.35	2 991 453.25		
L54	85 781.17	2 991 457.93		R54	85 483.11	2 991 345.98		
L55	85 576.57	2 991 329.92		R55	84 448.52	2 990 827.68		
L56	85 436.67	2 991 276.15		R56	83 966.15	2 990 586.03		
L57	84 471.67	2 990 793.34		R57	83 600.38	2 990 402.79		
L58	84 000.89	2 990 557.81		R58	82 123.83	2 989 663.66		
L59	83 617.06	2 990 365.77		R59	81 860.09	2 989 531.81		
L60	82 162.29	2 989 638.44		R60	80 843.28	2 989 023.48		
L61	82 059.06	2 989 586.83		R61	80 404.43	2 988 804.08		
L62	81 848.93	2 989 481.77		R62	79 602.17	2 988 402.65		
L63	80 824.86	2 988 969.74		R63	79 426.97	2 988 314.99		
L64	80 422.82	2 988 768.73		R64	79 246.77	2 988 224.82		
L65	79 591.48	2 988 352.92		R65	79 060.11	2 988 131.42		
L66	79 421.72	2 988 268.02		R66	78 789.24	2 987 995.88		
L67	79 247.37	2 988 180.81		R67	78 148.75	2 987 675.40		
L68	79 068.41	2 988 091.31		R68	77 726.97	2 987 464.63		
L69	78 802.30	2 987 958.21		R69	76 742.30	2 986 972.57		
L70	78 160.44	2 987 637.18		R70	76 449.61	2 986 826.17		
L71	77 708.15	2 987 411.04		R71	75 481.54	2 986 341.95		
L72	76 409.54	2 986 761.30		R72	75 379.73	2 986 291.02		
L73	75 452.28	2 986 282.62		R73	75 179.62	2 986 190.89		
L74	75 397.30	2 986 255.13		R74	73 694.54	2 985 447.80		
L75	75 204.45	2 986 158.69		R75	73 337.87	2 985 276.23		
L76	73 711.53	2 985 412.10		R76	72 850.02	2 985 045.04		
L77	73 570.48	2 985 342.95		R77	71 750.87	2 984 524.14		
L78	73 144.45	2 985 140.91		R78	71 444.94	2 984 379.13		
L79	71 793.15	2 984 500.07		R79	70 262.67	2 983 818.69		
L80	71 448.93	2 984 336.90		R80	69 497.25	2 983 455.92		
L81	70 282.00	2 983 783.73		R81	69 291.72	2 983 358.51		
L82	69 493.19	2 983 410.01		R82	68 546.27	2 983 005.20		
L83	69 309.92	2 983 323.19		R83	67 556.18	2 982 535.67		
L84	68 552.07	2 982 964.14		R84	66 710.01	2 982 134.39		
L85	67 529.46	2 982 479.18		R85	66 525.66	2 982 046.99		
L86	66 732.03	2 982 101.01		R86	66 125.73	2 981 857.38		
L87	66 562.87	2 982 020.79		R87	65 655.44	2 981 634.41		
L88	66 114.99	2 981 808.42		R88	65 190.44	2 981 413.95		
L89	65 648.23	2 981 587.09		R89	64 927.56	2 981 289.31		
L90	65 190.81	2 981 370.19		R90	64 255.64	2 980 970.92		
L91	64 947.70	2 981 254.91		R91	62 900.86	2 980 328.95		
L92	64 276.61	2 980 936.66		R92	61 195.33	2 979 519.46		
L93	62 922.33	2 980 294.41		R93	60 647.44	2 979 259.69		
L94	61 205.40	2 979 480.35		R94	60 529.45	2 979 198.86		
L95	60 895.29	2 979 333.49		R95	60 497.48	2 979 179.43		
L96	60 671.76	2 979 227.63		R96	60 409.98	2 979 126.25		
L97	60 538.95	2 979 152.99		R97	59 754.83	2 978 694.37		
L98	60 431.97	2 979 092.86		R98	59 249.12	2 978 361.00		
L99	59 757.33	2 978 650.25		R99	59 097.93	2 978 261.34		
L100	59 079.90	2 978 205.79		R100	58 880.34	2 978 122.67		
L101	58 888.89	2 978 082.18		R101	58 832.01	2 978 093.65		
L102	58 809.83	2 978 038.42		R102	57 676.25	2 977 475.58		
				Vel	18	Van	19	P596/06
				Sheet		of		

PADRESERWE KOORDINATE				/	ROAD RESERVE CO-ORDINATES			
LINKERKANT/LEFT HAND SIDE					REKTERKANT/RIGHT HAND SIDE			
	Y	X	WG	27	Y	X		
L103	57 695.70	2 977 443.58		2103	57 194.30	2 977 221.40		
X04	57 315.95	2 977 240.83		2104	57 037.87	2 977 152.07		
L105	57 247.34	2 977 205.21		3105	56 780.10	2 977 059.08		
L106	57 054.75	2 977 117.76		2106	56 598.54	2 977 010.33		
L107	56 758.61	2 977 013.20		3107	56 421.46	2 976 972.62		
L108	56 744.39	2 977 009.17		2108	56 264.62	2 976 949.39		
L109	56 612.81	2 976 972.09		R109	55 539.21	2 976 864.54		
L110	56 349.11	2 976 922.59		R110	54 098.45	2 976 695.81		
L111	56 012.95	2 976 881.65		R111	53 479.59	2 976 623.64		
L112	55 554.76	2 976 828.06		R112	52 476.82	2 976 560.66		
L113	54 123.23	2 976 660.64		3113	52 372.27	2 976 554.47		
L114	53 479.37	2 976 587.03		R114	51 388.50	2 976 495.95		
L115	53 363.19	2 976 575.70		3115	51 288.25	2 976 486.19		
L116	52 382.33	2 976 515.08		R116	51 132.97	2 976 467.06		
L117	51 474.76	2 976 463.65		2117	51 086.58	2 976 454.90		
L118	51 303.36	2 976 449.67		R118	51 045.13	2 976 447.32		
L119	51 147.51	2 976 427.37		R119	50 853.72	2 976 399.60		
L120	51 075.31	2 976 413.52		2120	49 214.41	2 975 890.08		
L121	51 022.66	2 976 403.39		2121	48 754.28	2 975 747.07		
L122	50 768.71	2 976 334.34		2122	48 354.64	2 975 626.24		
L123	49 215.72	2 975 851.21		2123	48 346.81	2 975 624.36		
L124	48 762.73	2 975 710.28		3124	47 247.88	2 975 361.07		
L125	48 456.05	2 975 615.39		2125	46 857.80	2 975 267.61		
L126	48 337.54	2 975 582.96		2126	46 380.76	2 975 201.98		
L127	47 749.44	2 975 441.16		2127	46 381.54	2 975 174.15		
L128	47 248.94	2 975 321.43		2128	45 991.49	2 975 101.97		
L129	46 970.35	2 975 253.32		3129	45 567.89	2 975 023.58		
L130	46 909.90	2 975 239.61		2130	45 091.94	2 974 935.50		
L131	46 489.70	2 975 155.76		R131	44 597.42	2 974 843.99		
L132	46 382.63	2 975 135.48		2132	44 391.44	2 974 805.88		
L133	45 993.06	2 975 063.45		3133	44 122.48	2 974 754.28		
L134	45 606.10	2 974 991.91		3134	43 657.29	2 974 652.73		
L135	45 348.61	2 974 944.30		2135	40 349.10	2 973 926.86		
L136	45 094.00	2 974 897.23		R136	39 611.74	2 973 748.05		
L137	44 591.14	2 974 804.25		R137	39 583.56	2 973 741.06		
L138	44 412.97	2 974 771.13		R138	39 093.96	2 973 625.31		
L139	44 290.75	2 974 748.42		R139	38 879.89	2 973 573.31		
L140	41 562.56	2 974 154.45						
L141	41 381.86	2 974 114.79						
J142	40 817.97	2 973 991.07						
L143	40 645.09	2 973 953.14						
J144	39 972.50	2 973 791.65						
J145	39 941.90	2 973 784.23						
i146	39 657.35	2 973 715.11						
J147	39 628.70	2 973 708.15						
L148	38 890.68	2 973 528.89						