
**GOVERNMENT NOTICE
GOEWERMENTSKENNISGEWING**

**DEPARTMENT OF TRANSPORT
DEPARTEMENT VAN VERVOER**

No. 749

24 August 2007

**THE SOUTH AFRICAN NATIONAL ROADS
AGENCY LIMITED**

Registration No: 98/09584/06

DECLARATION AMENDMENT OF NATIONAL ROAD N3 SECTION 8X

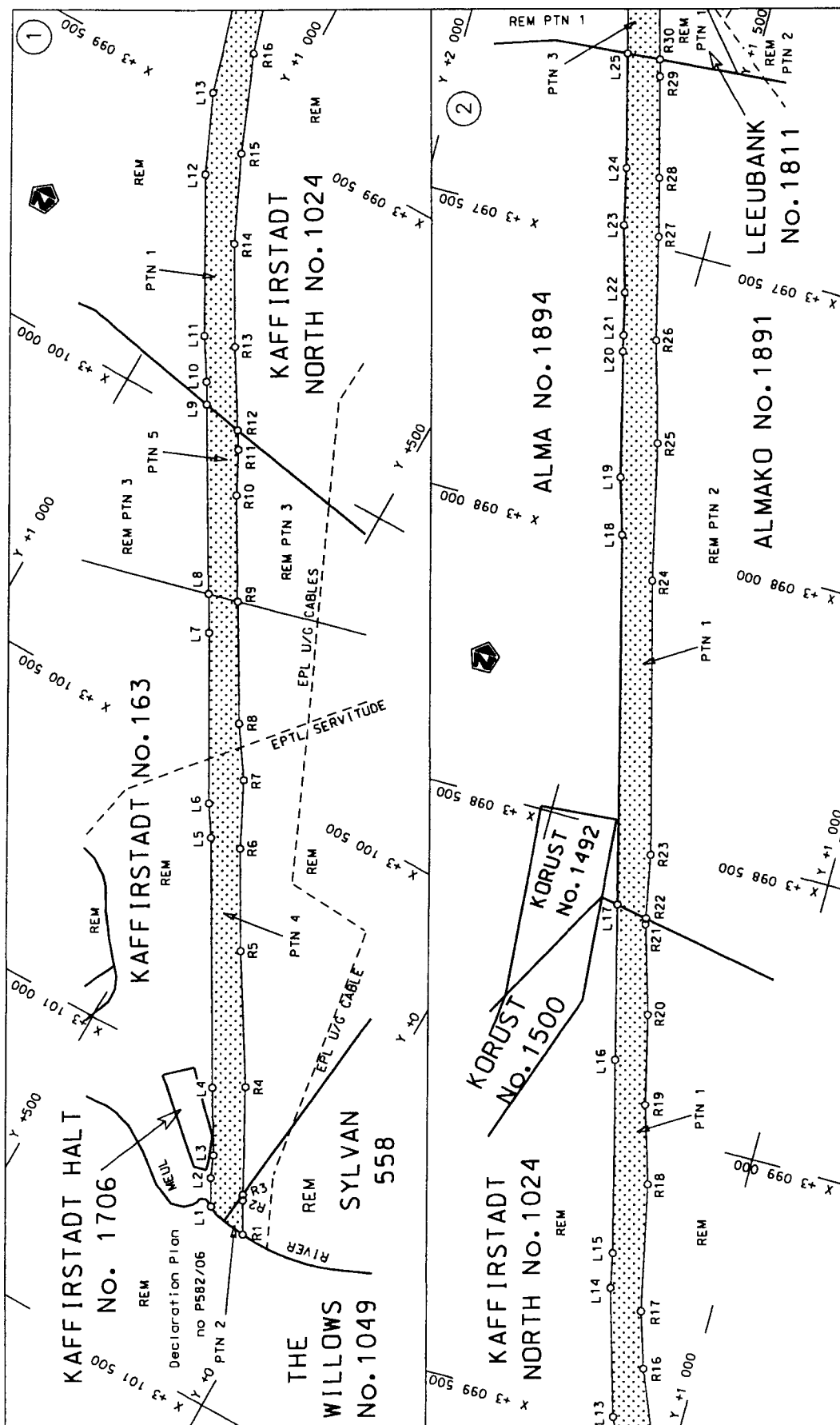
AMENDMENT OF DECLARATION No. 61 OF 1983

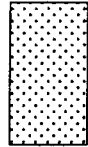
By virtue of section 40 (1)(b) of the South African National Roads Agency Limited and the National Roads Act, 1998 (Act No. 7 of 1998), I hereby amend Declaration No. 61 of 1983, by substituting the section from the Meul River (sheet 6 of Plan No. P333/82) up to the common boundary between the farms Hester 1590 portion 1 and Waterval 1021, (sheet 11 of Plan No. P333/82), with the subjoined sheets 1 to 9 of Plan P581/06.

(National Road N3 Section 8X: Meul River – Warden Interchange)

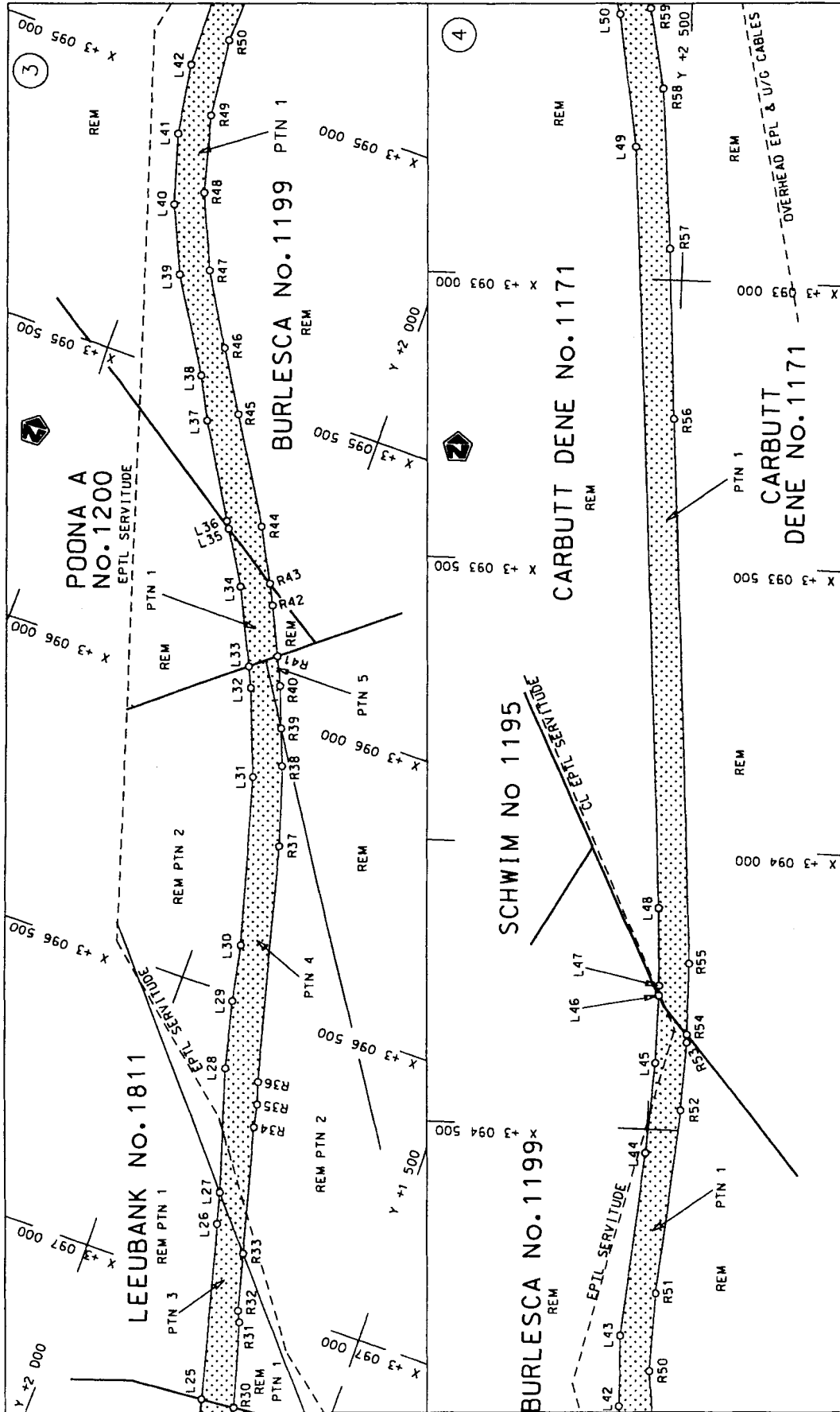


MINISTER OF TRANSPORT



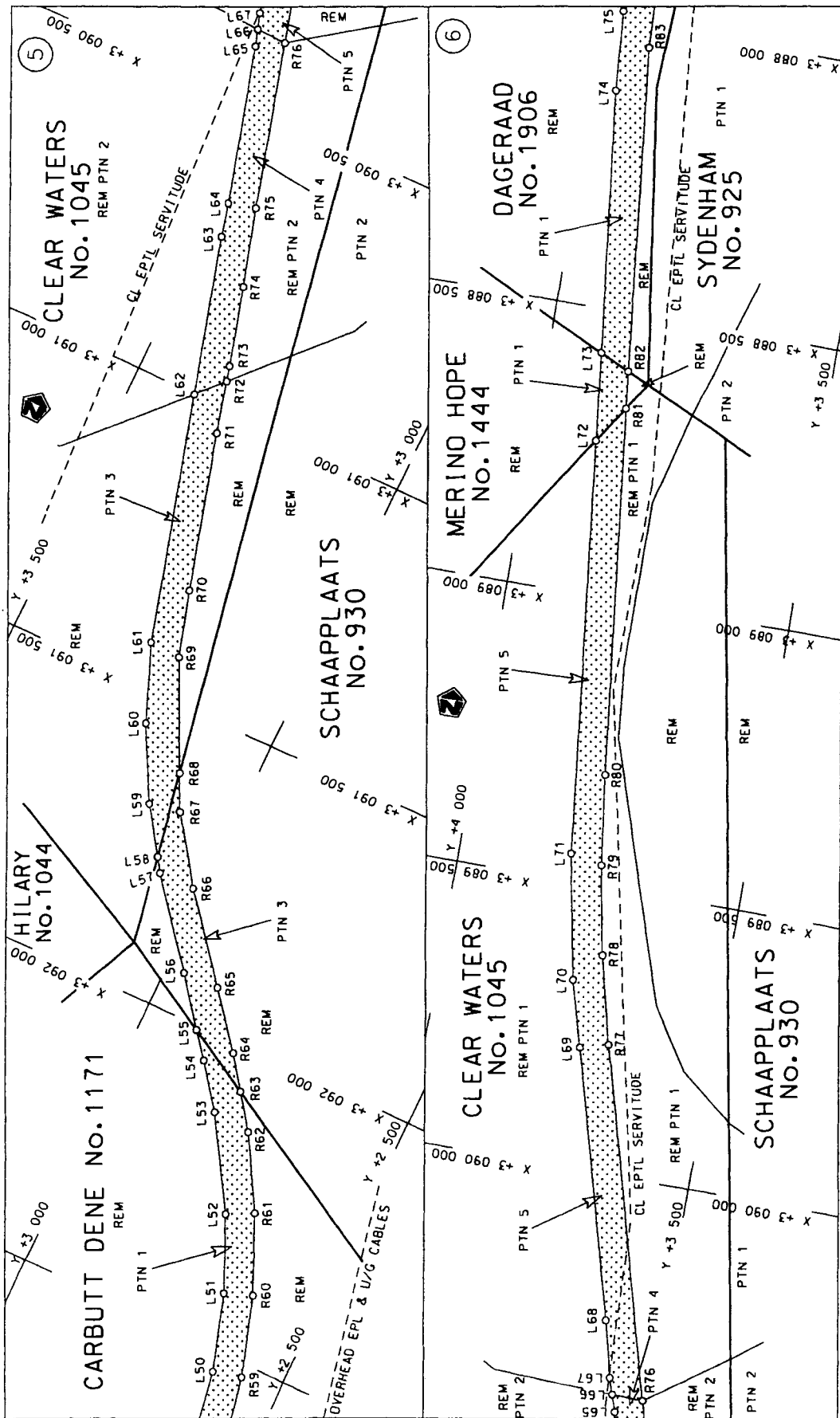
<p>Die Suid Afrikaanse Nasionale Padogentskap Beperk The South African National Roads Agency Limited</p>	<p>Die figuur getoon The figure shown</p> 	<p>stelt die padreserwe voor van 'n gedeelte represents the road reserve of a portion van Nasionale Roete N3 of National Route</p>
		<p>Vel Sheet 1 von 9 of Plan P581/06</p>

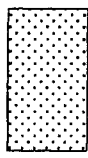
D.O.9.A



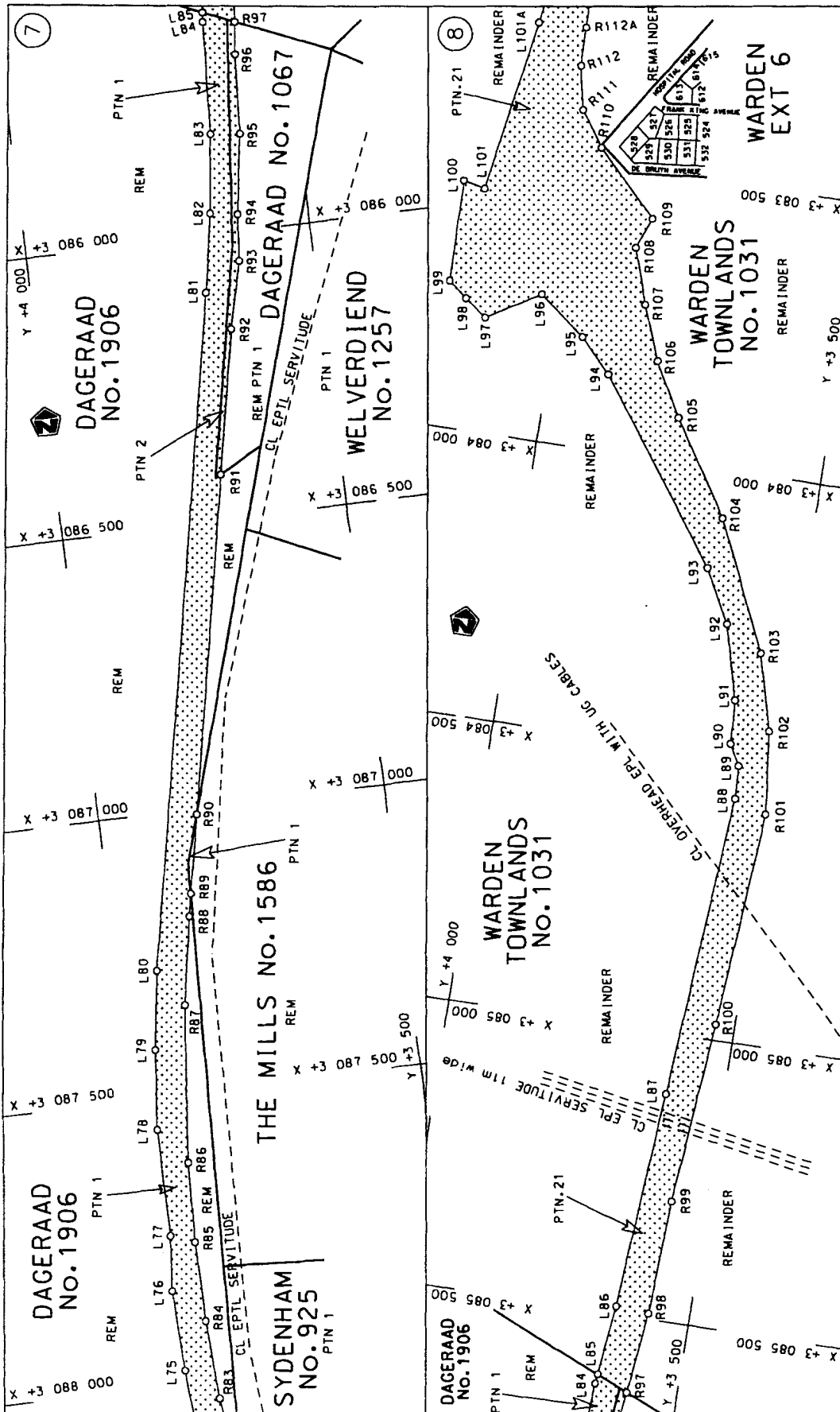
<p>Die Suid Afrikaanse Nasionale Padagentskap Beperk The South African National Roads Agency Limited</p>	<p>Die figuur getoon The figure shown</p>	<p>stel die padreserwe voor van 'n gedeelte represents the road reserve of a portion van Nasionale Roete N3 of National Route</p>	<p>Vel Sheet 2 of 9 Plan P581/06</p>
--	---	---	--

D.O.9.A



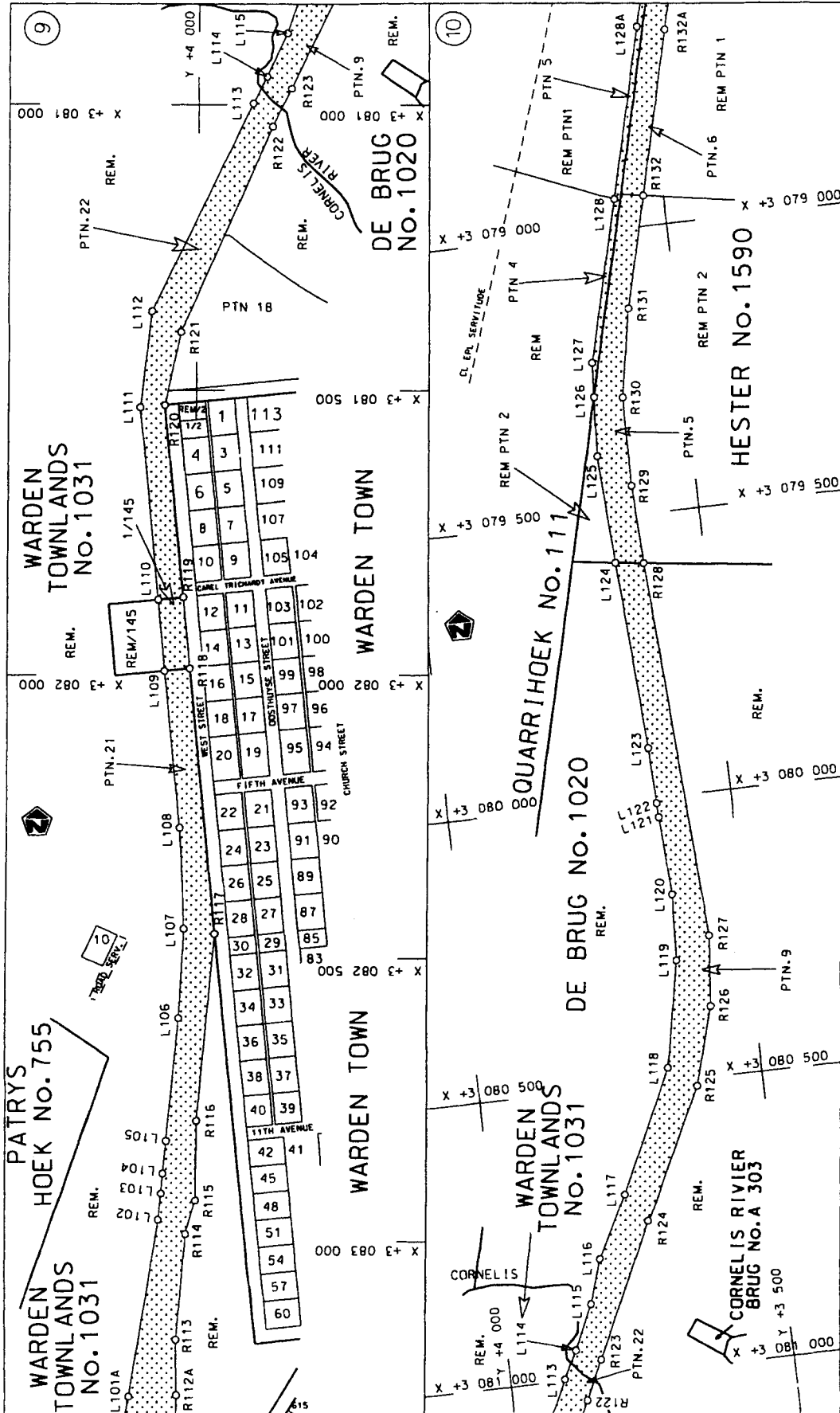
<p>Die Suid Afrikaanse Nasionale Padagentskap Beperk The South African National Roads Agency Limited</p>	<p>Die figuur getoon The figure shown</p> 	<p>steeldie podreserwe voor van 'n gedeelte represents the road reserve of a portion van Nasionale Roete N3 of National Route N3</p> <p>Seksie Section</p> <p>8X</p>	<p>Vel Sheet</p> <p>3 of 9</p>	<p>Plan P581/06</p>
--	---	--	------------------------------------	-------------------------

D.O.9.A

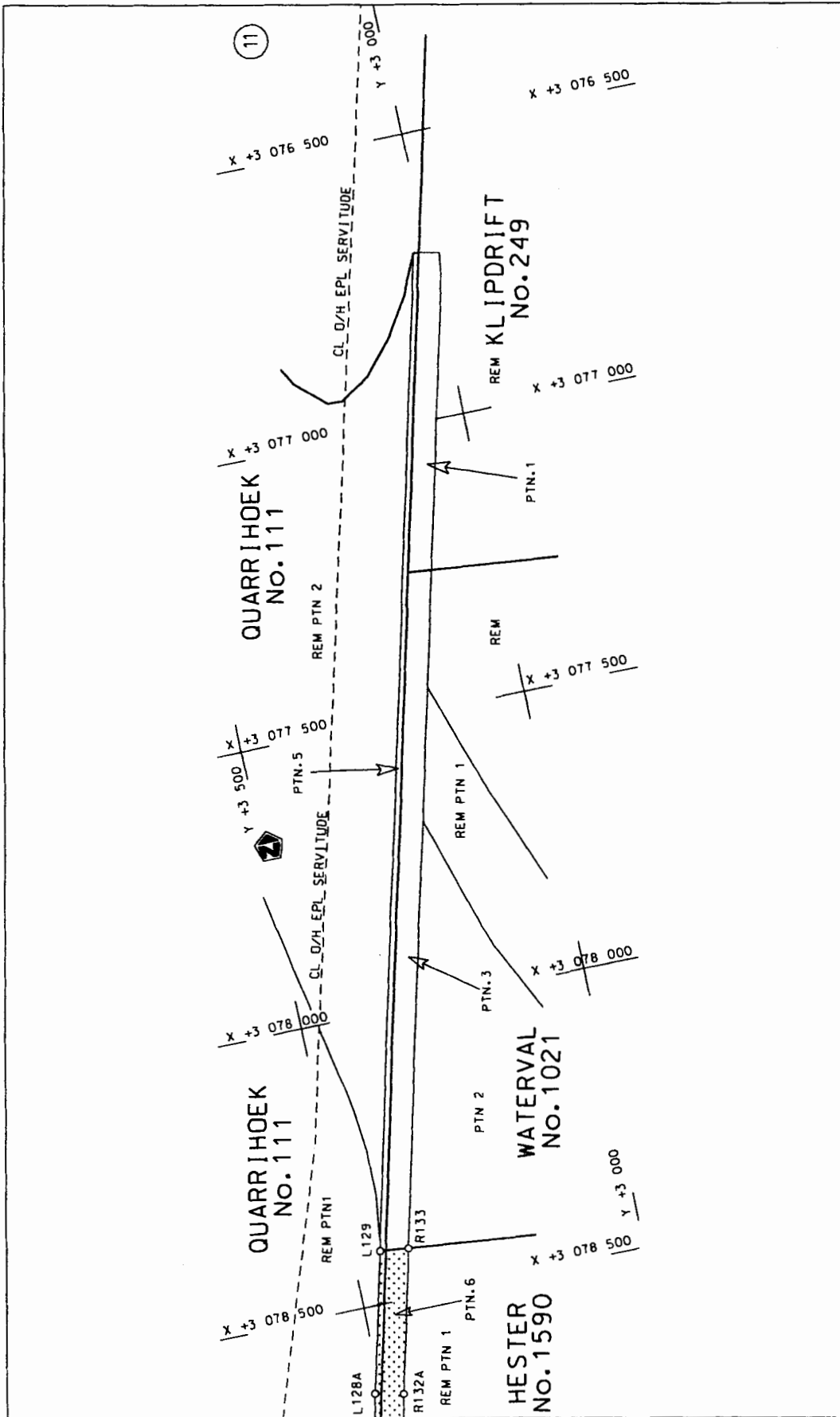


Vel Sheet 4 of 9	steldie padreserwe voor van 'n gedeelte represents the road reserve of a portion van Nasionale Roete N3 of National Route N3	Die Suid Afrikaanse Nasionale Padagentskap Beperk The South African National Roads Agency Limited
Plan P581/06	Saksie Section 8X	Die figuur getoon The figure shown

D.O.9.A



<p>Die Suid Afrikaanse Nasionale Padogentskap Beperk The South African National Roads Agency Limited</p>	<p>Die figuur getoon The figure shown</p>	<p>Vel Sheet 5 of 9 Plan P581/06</p>
<p>stelt die padreserwe voor van 'n gedeelte represents the road reserve of a portion of Nasionale Roete N3 Seksie 8X of National Route</p>		<p>D.O.9.A</p>



Die Suid Afrikaanse Nasionale Padagentskap Beperk The South African National Roads Agency Limited	Die figuur getoon The figure shown	steldie padreserwe voor van 'n gedeelte represents the road reserve of a portion van Nasionale Roete N3 of National Route N3 Section	Vel Sheet 6 of 9	Plan P581/06	8X
--	---------------------------------------	---	---------------------	--------------	----

D.O.9.A

PADRESERWE KOÖRDINATE				ROAD RESERVE CO-ORDINATES			
LINKERKANT/LEFT HAND SIDE				REGTERKANT/RIGHT HAND SIDE			
	Y	X	WG 29		Y	X	
L1	154.91	3 101	193.66	R1	82.91	3 101	209.11
L2	180.06	3 101	150.26	R2	112.43	3 101	157.31
L3	195.78	3 101	113.15	R3	117.09	3 101	148.58
L4	255.97	3 101	009.34	R4	206.68	3 100	980.73
L5	476.63	3 100	628.62	R5	333.10	3 100	776.62
L6	509.35	3 100	578.22	R6	423.39	3 100	620.86
L7	657.18	3 100	317.15	R7	477.52	3 100	513.51
L8	691.47	3 100	258.01	R8	533.72	3 100	430.52
L9	857.89	3 099	970.95	R9	641.07	3 100	245.28
L10	877.87	3 099	936.49	R10	734.29	3 100	084.43
L11	920.52	3 099	868.76	R11	770.96	3 100	013.22
L12	1 058.42	3 099	622.77	R12	788.84	3 099	983.90
L13	1 116.63	3 099	492.53	R13	864.70	3 099	859.49
L14	1 179.11	3 099	278.48	R14	954.63	3 099	703.58
L15	1 191.32	3 099	219.67	R15	1 021.59	3 099	561.30
L16	1 276.99	3 098	890.52	R16	1 088.07	3 099	397.90
L17	1 345.56	3 098	627.20	R17	1 117.75	3 099	303.86
L18	1 508.65	3 098	000.69	R18	1 164.46	3 099	088.70
L19	1 537.85	3 097	904.40	R19	1 205.55	3 098	954.71
L20	1 591.34	3 097	690.99	R20	1 242.98	3 098	799.10
L21	1 597.82	3 097	663.49	R21	1 288.87	3 098	647.99
L22	1 615.14	3 097	591.52	R22	1 290.67	3 098	637.77
L23	1 647.65	3 097	478.30	R23	1 312.54	3 098	527.80
L24	1 669.94	3 097	380.77	R24	1 436.39	3 098	064.00
L25	1 720.35	3 097	187.32	R25	1 491.00	3 097	830.20
L26	1 797.28	3 096	889.08	R26	1 540.21	3 097	657.02
L27	1 811.04	3 096	836.32	R27	1 583.67	3 097	482.33
L28	1 875.20	3 096	628.33	R28	1 610.22	3 097	382.61
L29	1 903.51	3 096	511.70	R29	1 655.17	3 097	211.61
L30	1 922.92	3 096	413.40	R30	1 663.15	3 097	182.93
L31	2 003.92	3 096	126.67	R31	1 703.40	3 097	038.27
L32	2 060.46	3 095	978.85	R32	1 712.30	3 097	019.91
L33	2 076.62	3 095	944.18	R33	1 737.53	3 096	923.01
L34	2 137.00	3 095	816.58	R34	1 792.91	3 096	710.26
L35	2 190.57	3 095	728.13	R35	1 801.05	3 096	671.03
L36	2 198.54	3 095	716.64	R36	1 813.09	3 096	632.81
L37	2 290.63	3 095	562.92	R37	1 919.10	3 096	225.68
L38	2 327.30	3 095	491.54	R38	1 961.87	3 096	090.83
L39	2 423.26	3 095	337.33	R39	1 985.91	3 096	028.79
L40	2 474.05	3 095	224.68	R40	2 013.01	3 095	958.84
L41	2 509.66	3 095	106.31	R41	2 035.03	3 095	910.34
L42	2 529.52	3 094	984.32	R42	2 073.05	3 095	829.21
L43	2 531.84	3 094	860.91	R43	2 090.57	3 095	794.46
L44	2 501.58	3 094	540.75	R44	2 137.90	3 095	704.98
L45	2 490.50	3 094	382.58	R45	2 242.84	3 095	533.67
L46	2 489.40	3 094	261.91	R46	2 305.53	3 095	431.34
L47	2 489.24	3 094	244.04	R47	2 376.48	3 095	312.42
L48	2 495.85	3 094	105.44	R48	2 431.28	3 095	187.97
L49	2 586.28	3 092	768.44	R49	2 465.94	3 095	056.31
L50	2 621.08	3 092	535.84	R50	2 480.38	3 094	921.09
L51	2 661.73	3 092	404.86	R51	2 474.37	3 094	784.45

Vel 7 Van 9
Sheet of

P581/06

PADRESERWE KOÖRDINATE				/ ROAD RESERVE CO-ORDINATES		
LINKERKANT/LEFT HAND SIDE				REGTERKANT/RIGHT HAND SIDE		
	Y	X	WG 29		Y	X
L52	2 716.76	3 092	279.27	R52	2 444.23	3 094 465.22
L53	2 811.44	3 092	125.85	R53	2 437.87	3 094 344.10
L54	2 868.96	3 092	051.37	R54	2 438.62	3 094 329.73
L55	2 903.28	3 092	007.54	R55	2 439.18	3 094 202.64
L56	2 967.61	3 091	925.42	R56	2 504.00	3 093 243.99
L57	3 082.06	3 091	785.42	R57	2 522.25	3 092 944.54
L58	3 098.45	3 091	761.36	R58	2 543.87	3 092 663.67
L59	3 151.10	3 091	684.10	R59	2 570.64	3 092 523.25
L60	3 218.63	3 091	558.03	R60	2 612.98	3 092 386.70
L61	3 271.23	3 091	425.00	R61	2 670.39	3 092 255.78
L62	3 390.91	3 090	999.35	R62	2 742.13	3 092 132.11
L63	3 466.45	3 090	730.70	R63	2 785.43	3 092 073.58
L64	3 480.67	3 090	672.31	R64	2 826.87	3 092 017.54
L65	3 555.93	3 090	402.68	R65	2 902.04	3 091 924.00
L66	3 565.38	3 090	373.50	R66	3 016.39	3 091 784.99
L67	3 574.43	3 090	345.57	R67	3 096.39	3 091 673.61
L68	3 598.91	3 090	248.58	R68	3 126.29	3 091 611.78
L69	3 727.94	3 089	786.27	R69	3 215.57	3 091 427.20
L70	3 760.46	3 089	669.71	R70	3 249.78	3 091 313.87
L71	3 804.32	3 089	452.14	R71	3 325.00	3 091 044.22
L72	3 890.85	3 088	730.28	R72	3 348.47	3 090 954.24
L73	3 908.53	3 088	576.68	R73	3 355.30	3 090 928.04
L74	3 964.01	3 088	120.01	R74	3 392.92	3 090 793.22
L75	3 974.80	3 087	979.30	R75	3 432.48	3 090 658.94
L76	3 979.07	3 087	838.21	R76	3 511.67	3 090 375.28
L77	3 969.55	3 087	742.42	R77	3 679.78	3 089 772.84
L78	3 968.70	3 087	556.18	R78	3 718.53	3 089 618.95
L79	3 953.74	3 087	415.76	R79	3 749.13	3 089 463.28
L80	3 933.42	3 087	276.17	R80	3 771.48	3 089 306.06
L81	3 697.38	3 086	098.91	R81	3 849.05	3 088 665.53
L82	3 673.13	3 085	962.18	R82	3 856.78	3 088 600.89
L83	3 655.22	3 085	824.49	R83	3 920.18	3 088 035.98
L84	3 643.71	3 085	625.60	R84	3 927.04	3 087 897.29
L85	3 641.87	3 085	609.10	R85	3 927.73	3 087 758.44
L86	3 628.13	3 085	486.37	R86	3 922.16	3 087 619.70
L87	3 599.28	3 085	107.46	R87	3 892.53	3 087 343.61
L88	3 562.66	3 084	571.24	R88	3 864.62	3 087 187.23
L89	3 565.83	3 084	512.97	R89	3 856.62	3 087 147.32
L90	3 584.89	3 084	476.29	R90	3 829.04	3 087 009.77
L91	3 589.93	3 084	399.13	R91	3 710.96	3 086 420.83
L92	3 624.15	3 084	267.97	R92	3 660.18	3 086 167.54
L93	3 673.39	3 084	174.21	R93	3 631.16	3 086 050.41
L94	3 894.19	3 083	864.07	R94	3 623.76	3 085 969.78
L95	3 949.68	3 083	805.56	R95	3 602.54	3 085 830.13
L96	4 030.19	3 083	741.58	R96	3 593.39	3 085 689.60
L97	4 123.75	3 083	797.46	R97	3 586.78	3 085 632.66
L98	4 161.40	3 083	768.90	R98	3 570.29	3 085 490.79
L99	4 195.07	3 083	742.61	R99	3 561.08	3 085 290.90
L100	4 197.09	3 083	565.68	R100	3 532.85	3 084 972.11
L101	4 159.19	3 083	574.05	R101	3 505.18	3 084 590.22
L102	4 057.94	3 082	961.81	R102	3 521.63	3 084 444.38

Vel	8	Van	9	P581/06
Sheet		of		

PADRESERWE KOÖRDINATE				/			ROAD RESERVE CO-ORDINATES		
LINKERKANT/LEFT HAND SIDE				REGTERKANT/RIGHT HAND SIDE					
	Y	X	WG 29		Y	X			
L103	4 053.00	3 082 915.50		R103	3 558.02	3 084 310.15			
L104	4 049.73	3 082 880.11		R104	3 660.07	3 084 084.61			
L105	4 044.55	3 082 822.64		R105	3 763.67	3 083 921.58			
L106	4 023.44	3 082 603.69		R106	3 814.18	3 083 828.08			
L107	4 015.29	3 082 446.84		R107	3 850.19	3 083 733.08			
L108	4 023.64	3 082 269.25		R108	3 881.68	3 083 636.07			
L109	4 052.03	3 081 992.08		R109	3 861.17	3 083 582.05			
L110	4 064.64	3 081 866.80		R110	3 967.30	3 083 472.59			
L111	4 098.50	3 081 529.98		R111	4 009.18	3 083 411.54			
L112	4 079.50	3 081 361.69		R112	4 025.65	3 083 335.03			
L113	3 903.68	3 080 997.17		R113	4 027.18	3 083 170.53			
L114	3 879.14	3 080 949.57		R114	4 010.38	3 082 986.64			
L115	3 843.66	3 080 872.37		R115	3 993.19	3 082 928.03			
L116	3 818.76	3 080 796.35		R116	3 991.24	3 082 787.59			
L117	3 763.00	3 080 689.23		R117	3 960.83	3 082 455.89			
L118	3 662.06	3 080 475.42		R118	4 008.04	3 081 987.64			
L119	3 626.29	3 080 287.25		R119	4 020.67	3 081 862.37			
L120	3 621.61	3 080 171.38		R120	4 054.94	3 081 526.01			
L121	3 629.64	3 080 034.01		R121	4 028.01	3 081 397.61			
L122	3 631.12	3 080 009.36		R122	3 868.46	3 081 037.70			
L123	3 635.41	3 079 911.76		R123	3 835.80	3 080 970.44			
L124	3 655.66	3 079 578.83		R124	3 726.92	3 080 739.66			
L125	3 667.07	3 079 391.18		R125	3 614.98	3 080 513.63			
L126	3 660.40	3 079 287.33		R126	3 575.82	3 080 374.02			
L127	3 656.54	3 079 227.23		R127	3 564.73	3 080 250.28			
L128	3 586.13	3 078 946.82		R128	3 606.71	3 079 585.26			
L129	3 451.54	3 078 409.42		R129	3 613.44	3 079 449.57			
				R130	3 610.68	3 079 293.71			
				R131	3 583.17	3 079 140.02			
				R132	3 535.02	3 078 946.75			
				R133	3 402.51	3 078 414.85			

Vel 9
Sheet

Van 9
of

P581/06