
**GOVERNMENT NOTICE
GOEWERMENTSKENNISGEWING**

**DEPARTMENT OF TRANSPORT
DEPARTEMENT VAN VERVOER**

No. 739

17 August 2007

**THE SOUTH AFRICAN NATIONAL ROADS
AGENCY LIMITED**

Registration No: 98/09584/06

DECLARATION AMENDMENT OF NATIONAL ROAD R510 SECTION 1

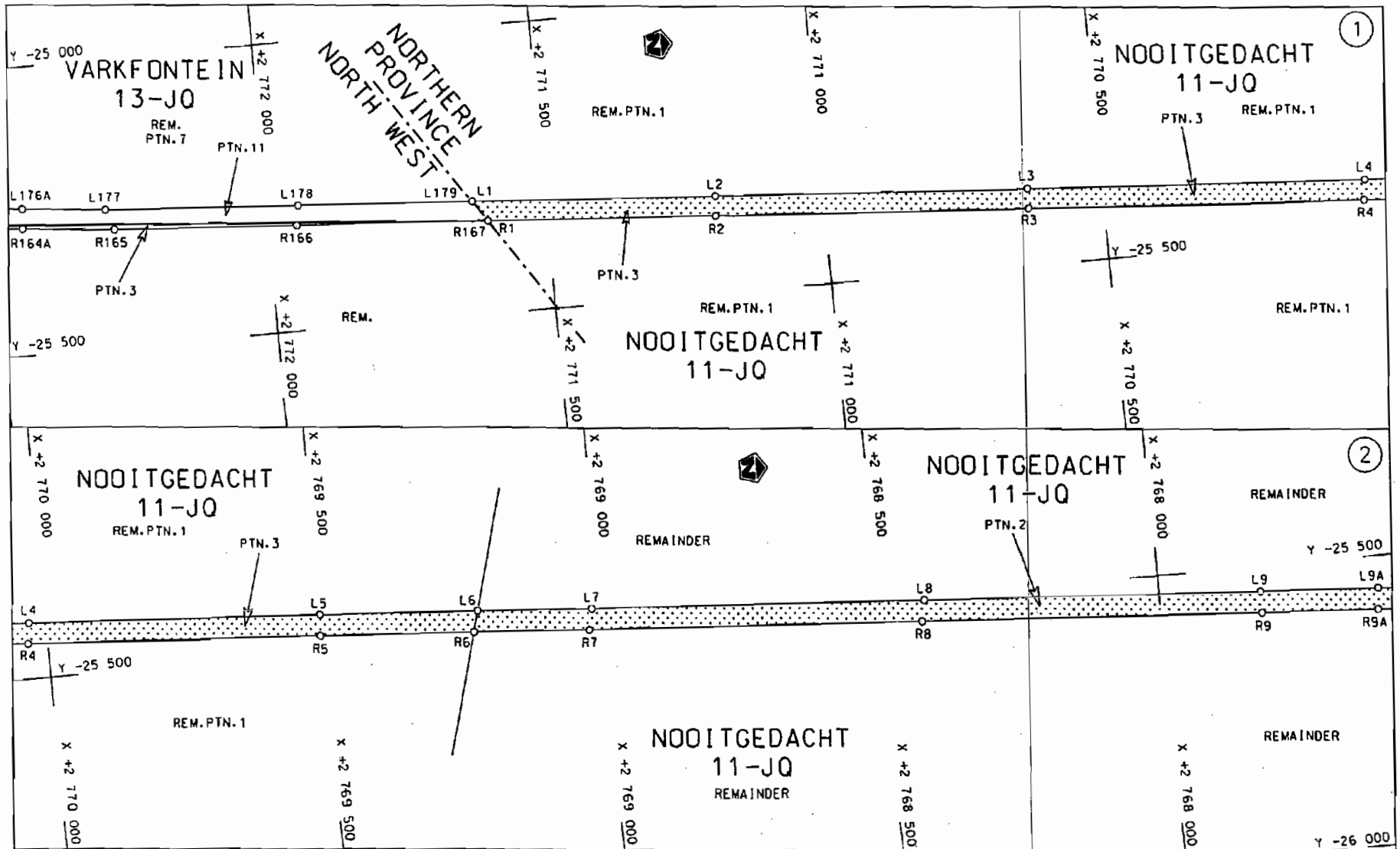
AMENDMENT OF DECLARATION No. 1230 OF 2004


By virtue of section 40 (1)(b) of the South African National Roads Agency Limited and the National Roads Act, 1998 (Act No. 7 of 1998), I hereby amend Declaration No. 1230 of 2004, by substituting the descriptive section from the North West/Limpopo Provincial Border up to Northam in paragraph (l) of the annexure with the subjoined sheets 1 to 4 of Plan P623/07.

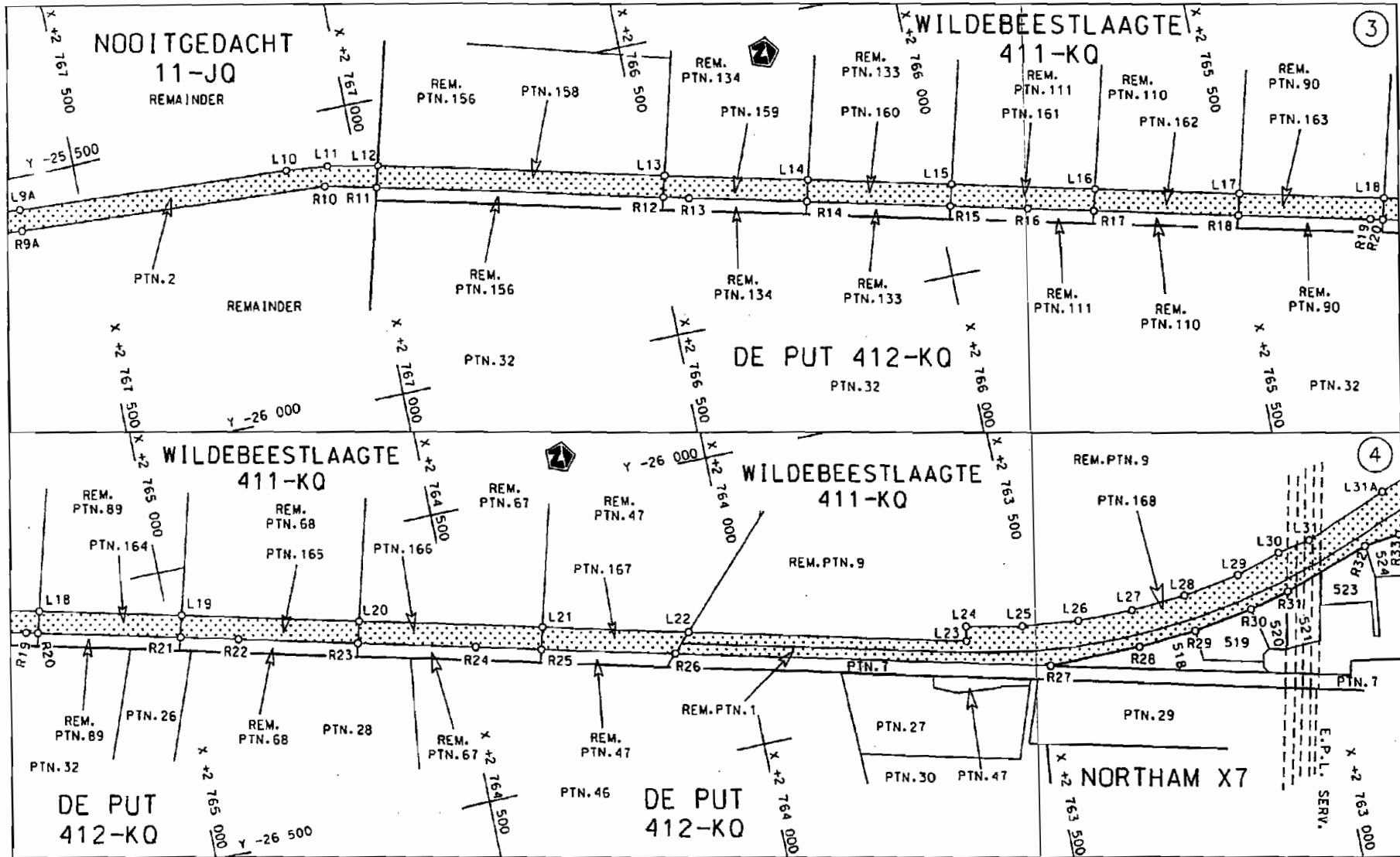
(National Road R510 Section 1: North West/Limpopo Provincial Border – Northam)

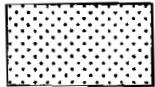


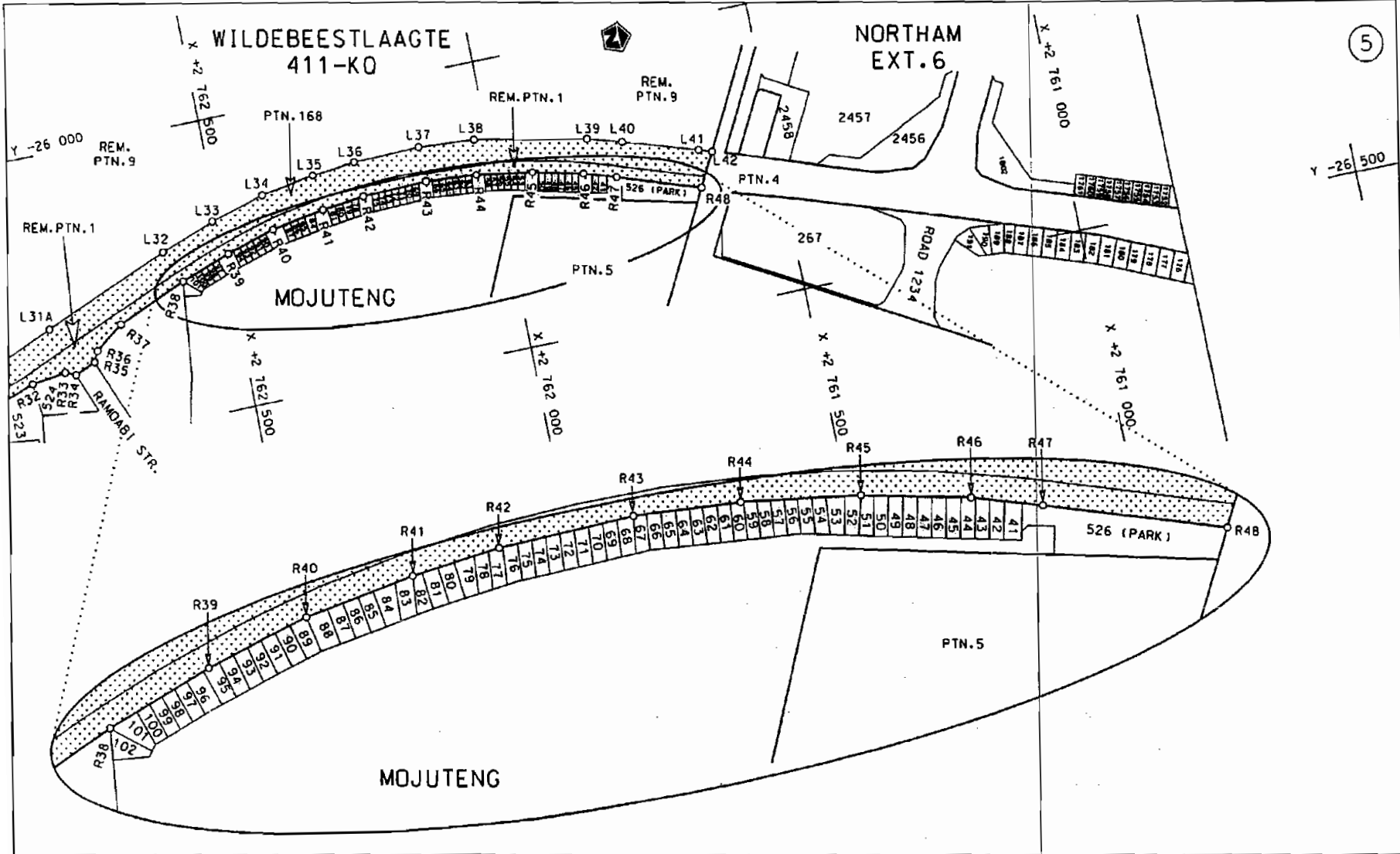
MINISTER OF TRANSPORT



Die Suid Afrikaanse Nasionale Padagentskop Beperk The South African National Roads Agency Limited	Die figuur getoon The figure shown		steldie podreserwe voor van 'n gedeelte represents the road reserve of a portion van Nasionale Roete of National Route R510	1 Seksie Section	Vel Sheet 1 van of 4 Plan P623/07
--	---------------------------------------	--	--	------------------------	---



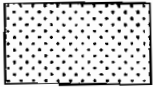
<p>Die Suid Afrikaanse Nasionale Padogentskap Beperk The South African National Roads Agency Limited</p>	<p>Die figuur getoon The figure shown</p>		<p>steldie padreserwe voor van 'n gedeelte represents the road reserve of a portion van Nasionale Roete R510 of National Route R510</p>	<p>Vel Sheet 2 van 4 of</p>
			<p>Seksie Section 1</p>	<p>Plan P623/07</p>



5

STAATSKOERANT, 17 AUGUSTUS 2007

No. 30181 7

<p>Die Suid Afrikaanse Nasionale Padagentskap Beperk The South African National Roads Agency Limited</p>	<p>Die figuur getoon The figure shown</p>		<p>steldie padreserwe voor van 'n gedeelte represents the road reserve of a portion von Nasionale Roete R510 Seksie Section 1</p>	<p>Vel Sheet 3 van of 4 Plan P623/07</p>
--	---	--	---	--

PADRESERWE KOÖRDINATE				/	ROAD RESERVE CO-ORDINATES			
LINKERKANT/LEFT HAND SIDE					REGTERKANT/RIGHT HAND SIDE			
	Y	X	WG 27°		Y	X		
L1	-25 304.77	2 771	631.98	R1	-25 341.04	2 771	606.83	
L2	-25 332.37	2 771	194.56	R2	-25 366.69	2 771	197.50	
L3	-25 367.68	2 770	633.64	R3	-25 402.10	2 770	635.14	
L4	-25 404.76	2 770	030.86	R4	-25 439.69	2 770	036.16	
L5	-25 436.97	2 769	501.74	R5	-25 472.98	2 769	505.11	
L6	-25 454.54	2 769	221.33	R6	-25 490.10	2 769	231.50	
L7	-25 467.37	2 769	016.44	R7	-25 503.02	2 769	024.80	
L8	-25 504.94	2 768	418.26	R8	-25 540.89	2 768	425.55	
L9	-25 542.54	2 767	819.87	R9	-25 578.77	2 767	820.53	
L10	-25 585.92	2 767	127.04	R10	-25 626.51	2 767	063.04	
L11	-25 593.32	2 767	051.15	R11	-25 647.85	2 766	972.47	
L12	-25 611.24	2 766	962.53	R12	-25 764.95	2 766	475.29	
L13	-25 728.43	2 766	465.37	R13	-25 775.31	2 766	431.29	
L14	-25 787.03	2 766	216.79	R14	-25 823.53	2 766	226.70	
L15	-25 845.63	2 765	968.20	R15	-25 882.12	2 765	978.12	
L16	-25 904.22	2 765	719.63	R16	-25 913.78	2 765	843.75	
L17	-25 962.82	2 765	471.04	R17	-25 940.68	2 765	729.53	
L18	-26 021.42	2 765	222.46	R18	-25 999.23	2 765	480.94	
L19	-26 080.01	2 764	973.89	R19	-26 052.81	2 765	253.39	
L20	-26 153.47	2 764	662.24	R20	-26 057.78	2 765	232.34	
L21	-26 228.08	2 764	345.73	R21	-26 116.36	2 764	983.76	
L22	-26 287.85	2 764	092.18	R22	-26 140.19	2 764	882.67	
L23	-26 401.10	2 763	610.75	R23	-26 189.76	2 764	672.10	
L24	-26 377.01	2 763	606.43	R24	-26 237.64	2 764	468.67	
L25	-26 395.99	2 763	507.78	R25	-26 264.14	2 764	355.52	
L26	-26 406.95	2 763	408.52	R26	-26 318.66	2 764	122.70	
L27	-26 408.54	2 763	311.46	R27	-26 471.15	2 763	472.21	
L28	-26 402.12	2 763	215.30	R28	-26 471.49	2 763	311.04	
L29	-26 386.72	2 763	115.45	R29	-26 464.49	2 763	209.04	
L30	-26 363.15	2 763	037.29	R30	-26 449.00	2 763	105.04	
L31	-26 352.86	2 762	980.00	R31	-26 432.00	2 763	035.04	
L32	-26 208.56	2 762	608.94	R32	-26 382.50	2 762	885.04	
L33	-26 175.22	2 762	512.03	R33	-26 374.50	2 762	823.04	
L34	-26 150.05	2 762	412.44	R34	-26 382.69	2 762	804.25	
L35	-26 134.28	2 762	318.29	R35	-26 368.00	2 762	767.04	
L36	-26 126.59	2 762	242.09	R36	-26 350.00	2 762	758.04	
L37	-26 123.97	2 762	123.69	R37	-26 314.50	2 762	708.04	
L38	-26 131.06	2 762	024.49	R38	-26 265.00	2 762	585.05	
L39	-26 169.22	2 761	826.18	R39	-26 234.50	2 762	495.05	
L40	-26 186.69	2 761	765.38	R40	-26 211.00	2 762	406.05	
L41	-26 227.64	2 761	634.70	R41	-26 196.00	2 762	313.05	
L42	-26 235.24	2 761	611.59	R42	-26 188.00	2 762	238.05	
				R43	-26 185.00	2 762	123.05	
				R44	-26 192.01	2 762	033.05	
				R45	-26 207.00	2 761	934.05	
				R46	-26 227.00	2 761	845.06	
				R47	-26 245.00	2 761	788.06	
				R48	-26 292.78	2 761	643.15	

Vel	4	Van	4	P623/07
Sheet		of		