

No. 732

28 July 2006

**THE SOUTH AFRICAN NATIONAL ROADS  
AGENCY LIMITED****DECLARATION AMENDMENT OF NATIONAL ROAD N1 SECTION 8X**

AMENDMENT OF DECLARATION NO. 1322 OF 1989

By virtue of Section 40(1)(b) of The South African National Roads Agency Limited and National Roads Act, 1998 (Act No 7 of 1998) I hereby amend declaration No. 1322 of 1989 by replacing the section from Beaufort West to Three Sisters in paragraph 1 with the subjoined sheets 1 to 20 of Plan P573/06.

**(National Road N1 Section 8X: Beaufort West – Three Sisters)**

  
MINISTER OF TRANSPORT

No. 732

28 Julie 2006

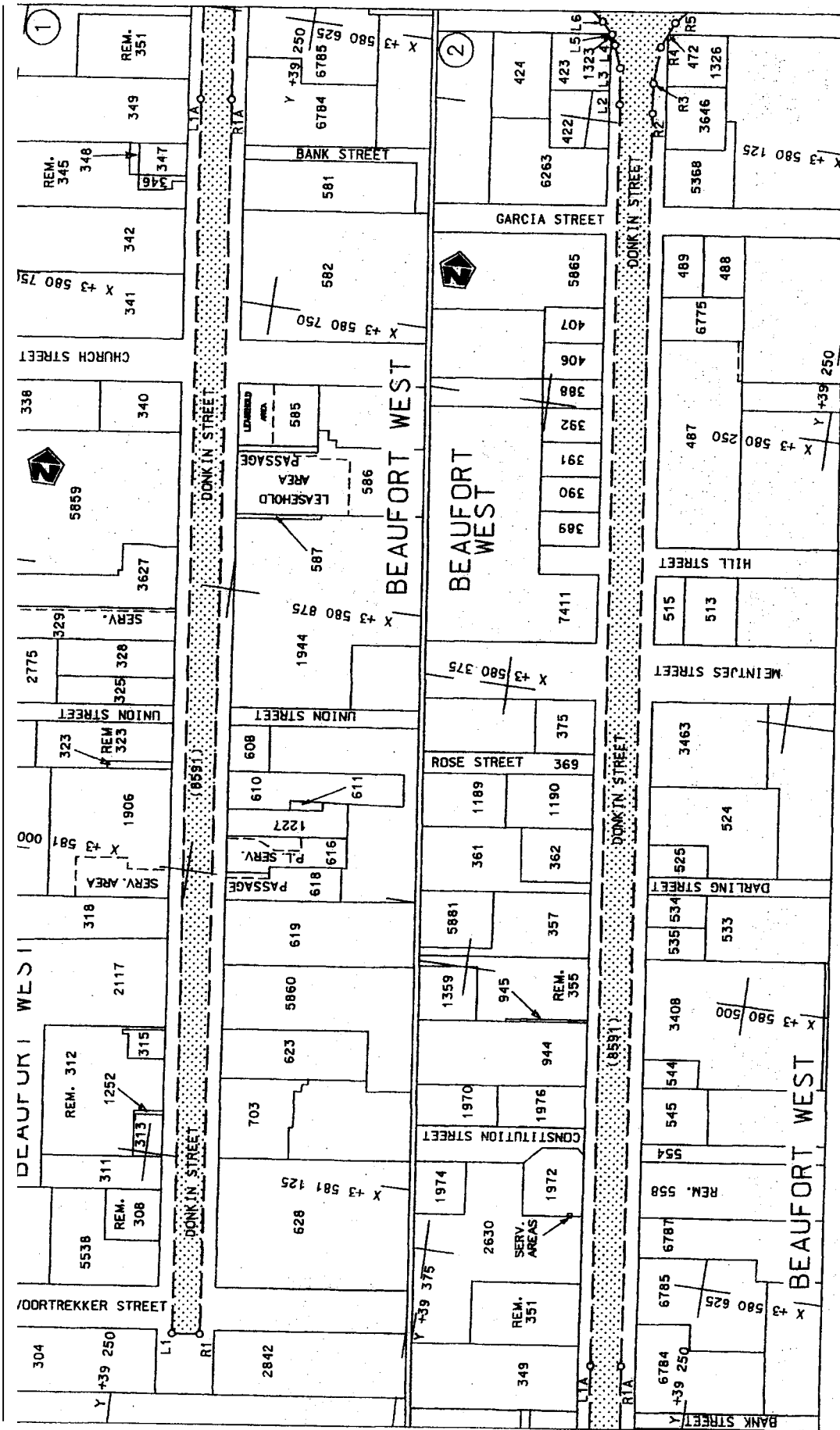
**DIE SUID AFRIKAANSE NASIONALE PADAGENTS-KAP  
BEPERK****VERKLARING WYSIGING VAN NASIONALE PAD N1 SEKSIE 8X**

WYSIGING VAN VERKLARING NO. 1322 van 1989

Kragtens artikel 40 (1)(b) van die Suid Afrikaanse Nasionale Padagentskap Beperk en Nasionale Paaie Wet (Wet No. 7 van 1998), wysig ek hiermee verklaring no.1322 van 1989 deur daarin die gedeelte vanaf Beaufort Wes tot Drie Sisters in paragraaf 1 te vervang deur bygaande velle 1 tot 20 van Plan P573/06.

**(Nasionale Pad N1 Seksie 8X: Beaufort Wes – Drie Sisters)**

  
MINISTER OF TRANSPORT



Die Suid Afrikaanse Nasionale Padagentskap Beperk  
 The South African National Roads Agency Limited

Die figuur getoon  
 The figure shown

stelt die padreserwe voor van 'n gedeelte  
 represents the road reserve of a portion  
 van Nasionale Roete  
 of National Route

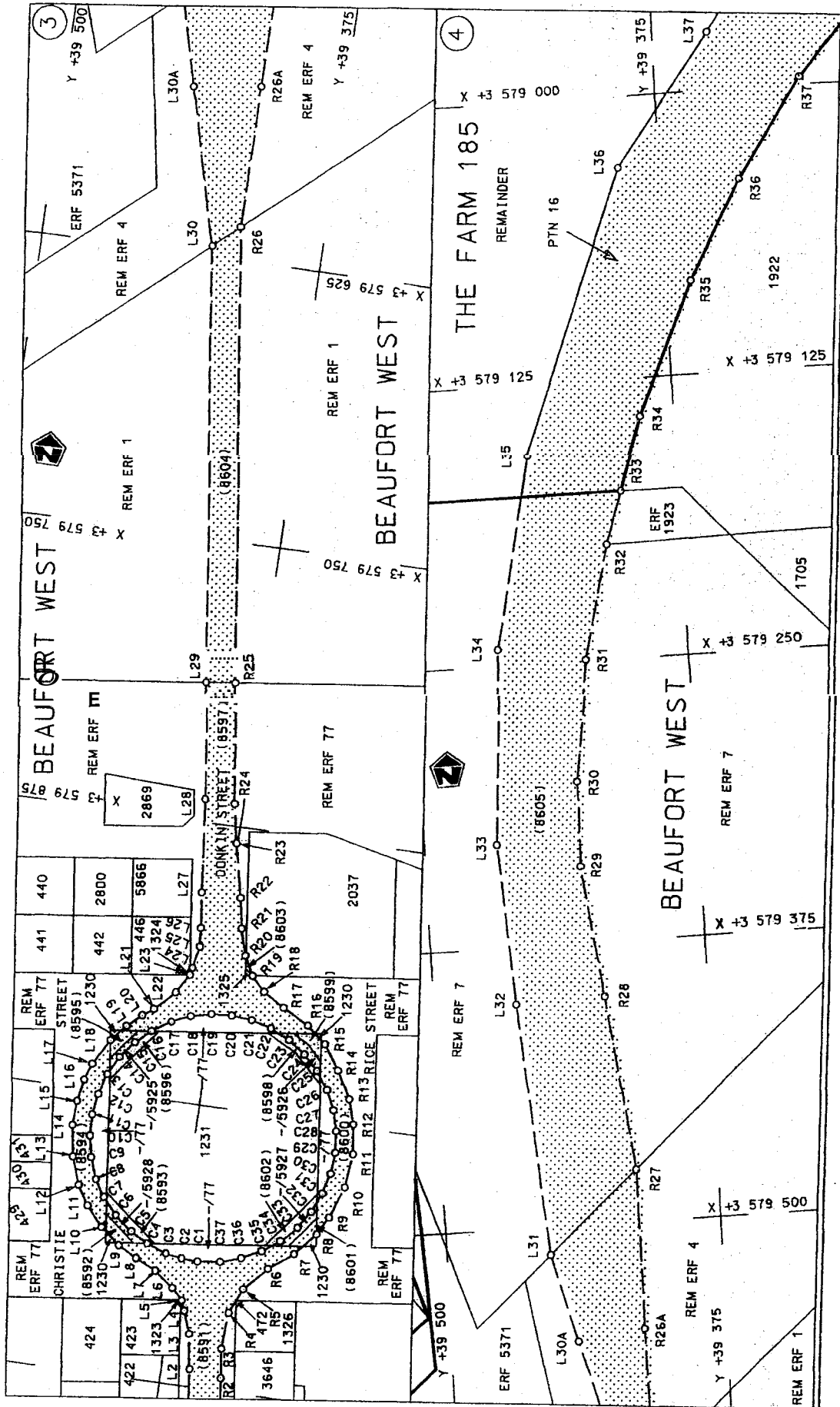
N1  
 Section

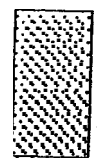
8X

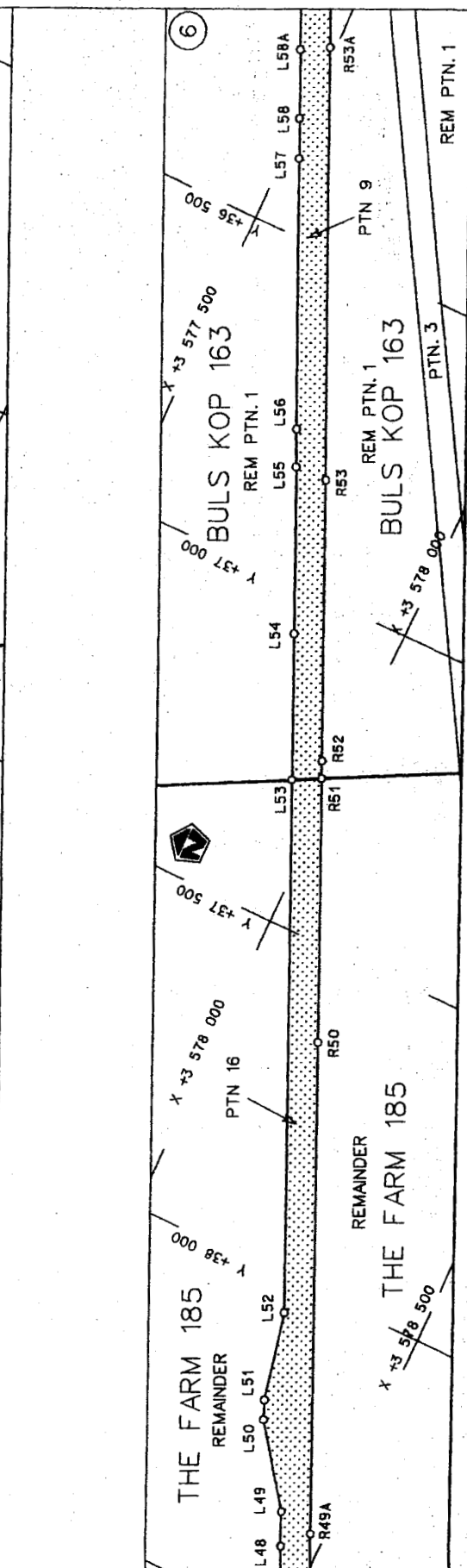
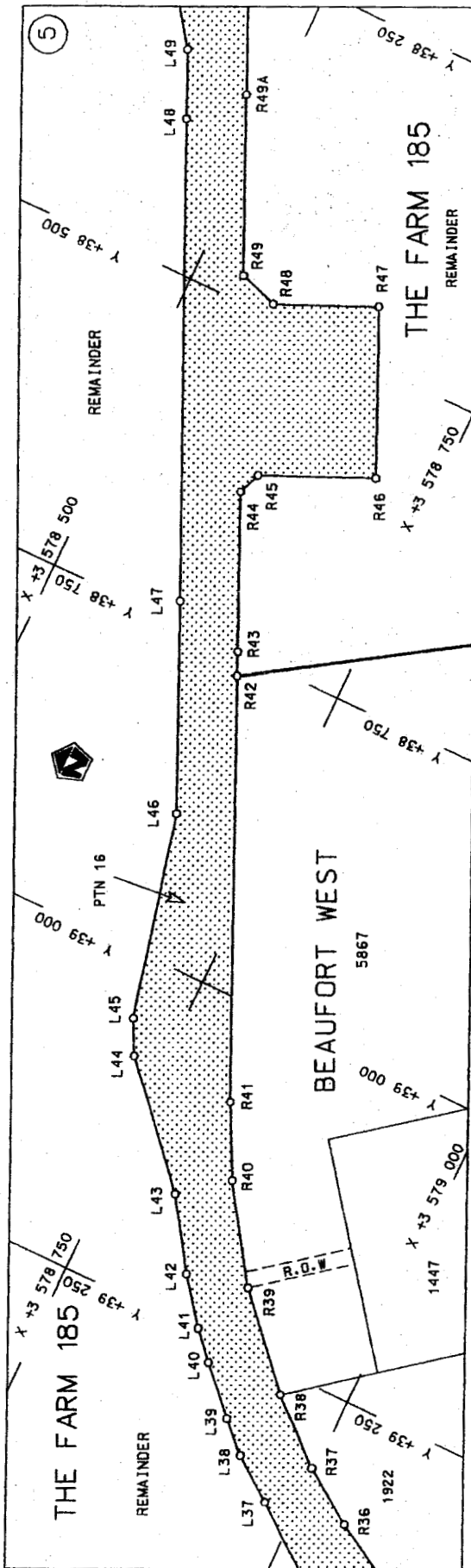
Vel  
 Sheet 1 of 20

Plan P573/06

D.O.9.A

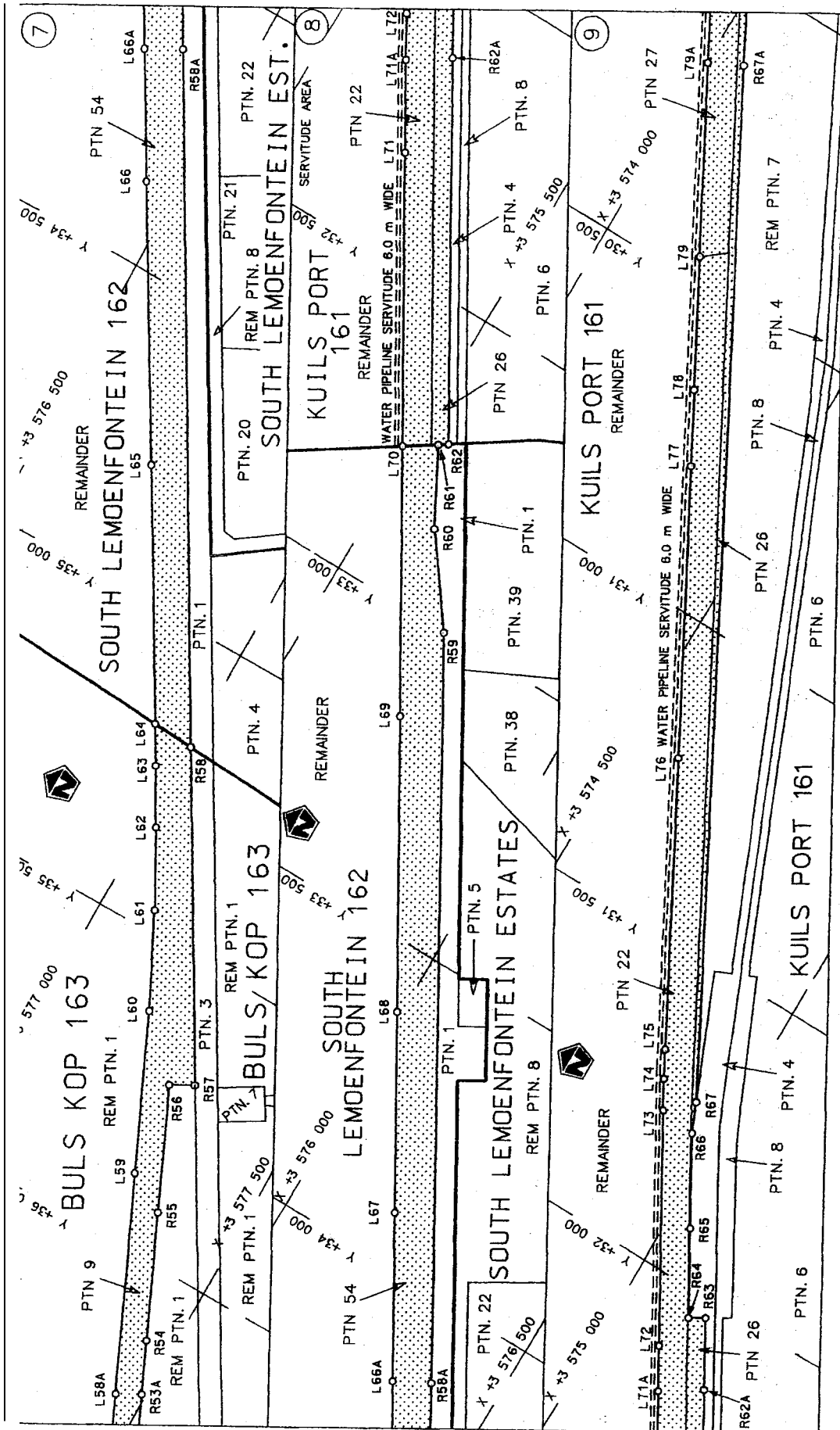


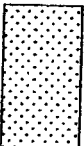
Die Suid Afrikaanse Nasionale Padagentskap Beperk The South African National Roads Agency Limited	Die figuur getoon The figure shown		steldie padreserwe voor van 'n gedeelte represents the road reserve of a portion van Nasionale Roete of National Route	N1 Section	8X
	Plan P573/06	Vel Sheet 2 of 20	D.O.9.A		



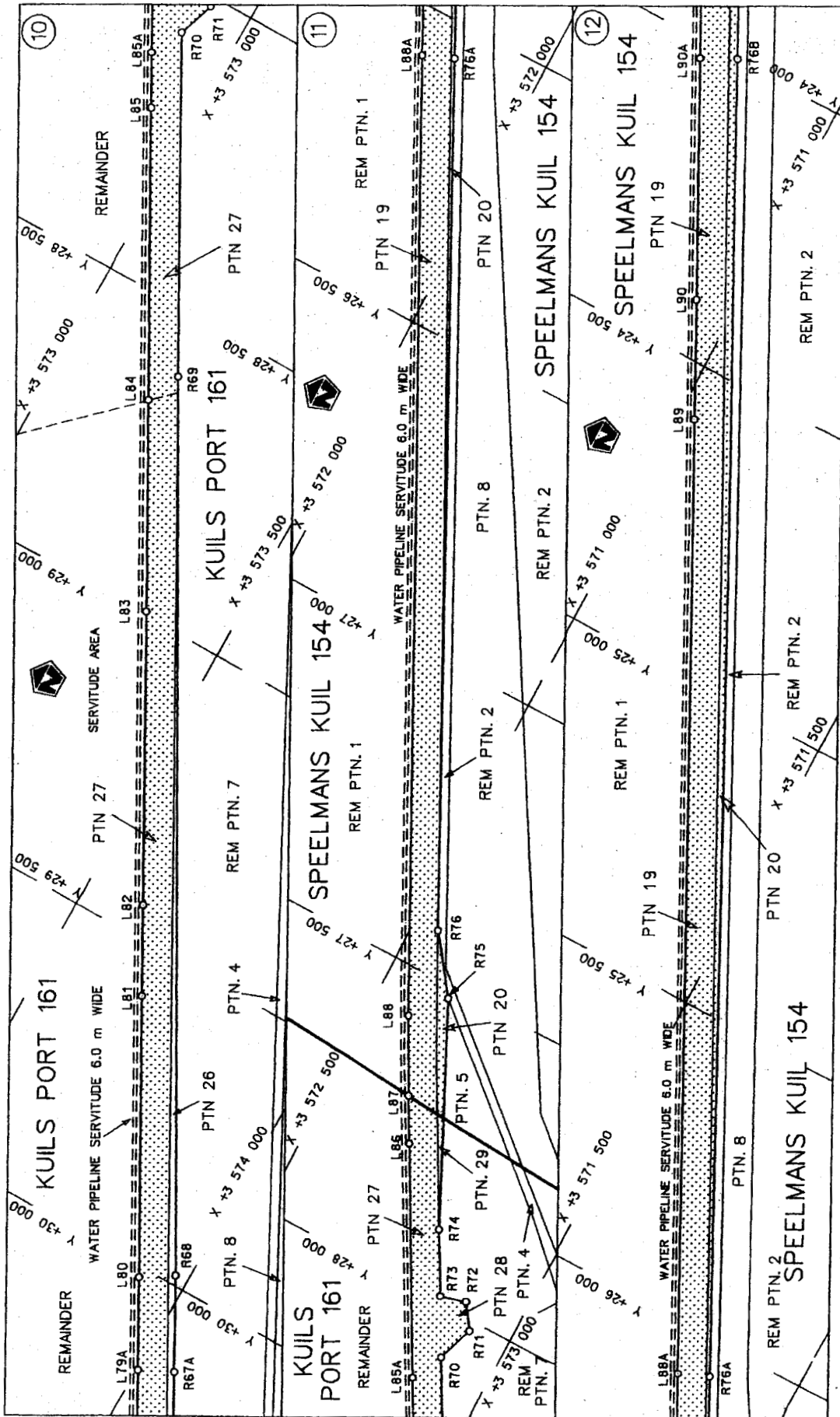
Die Suid Afrikaanse Nasionale Padagentskap Beperk The South African National Roads Agency Limited	Die figuur getoon The figure shown	steldie padreserwe voor van 'n gedeelte represents the road reserve of a portion van Nasionale Roete N1 of National Route N1 Section	Vel Sheet 3 van 20 Plan P573/06
--	---------------------------------------	---	------------------------------------

D.O.9.A



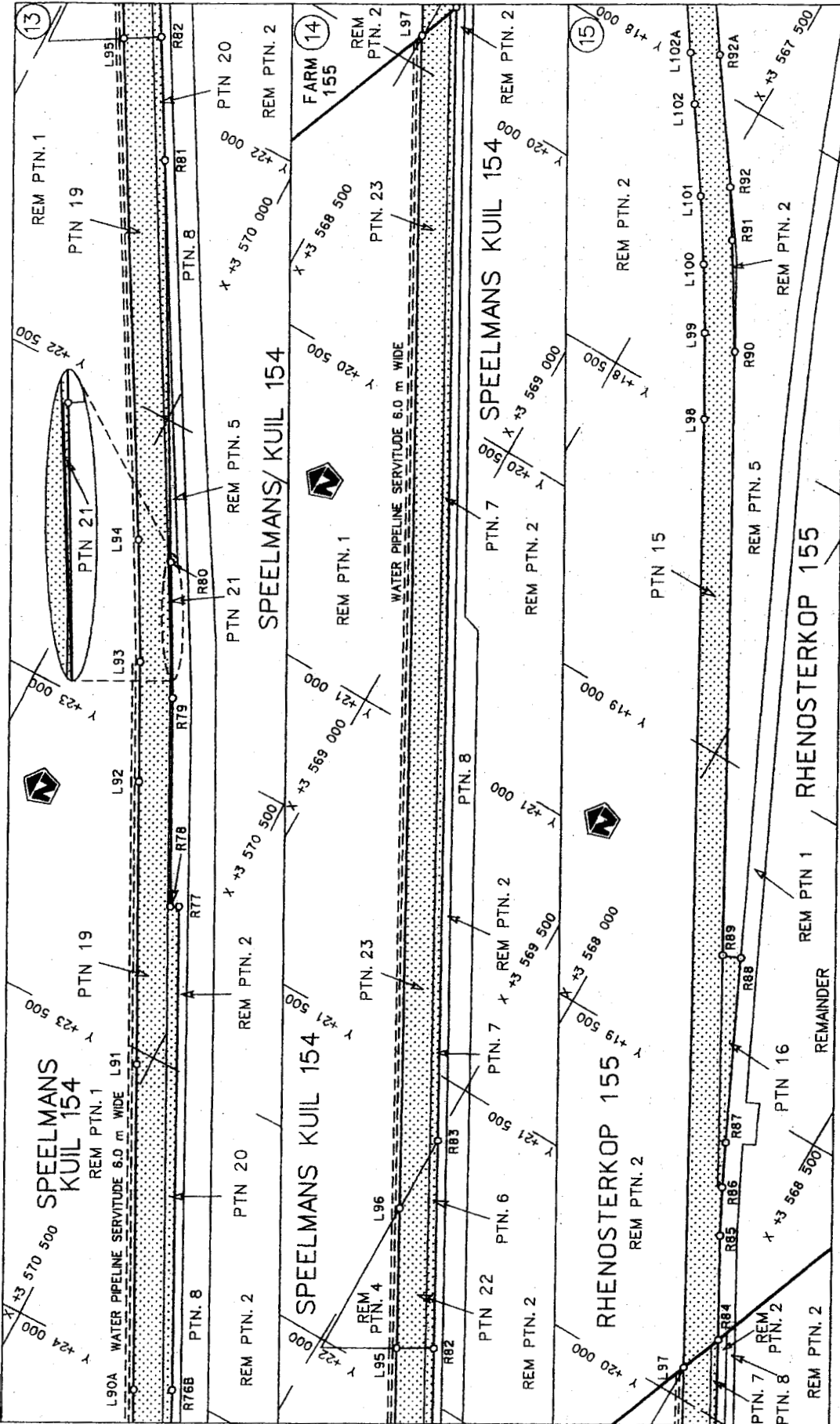
Die Suid Afrikaanse Nasionale Padagentskap Beperk The South African National Roads Agency Limited	Die figuur getoon The figure shown		steldie padreserwe voor van 'n gedeelte represents the road reserve of a portion van Nasionale Roete N1 of National Route Section	Vel Sheet 4 of 20
				Plan P573/06


D.O.9.A



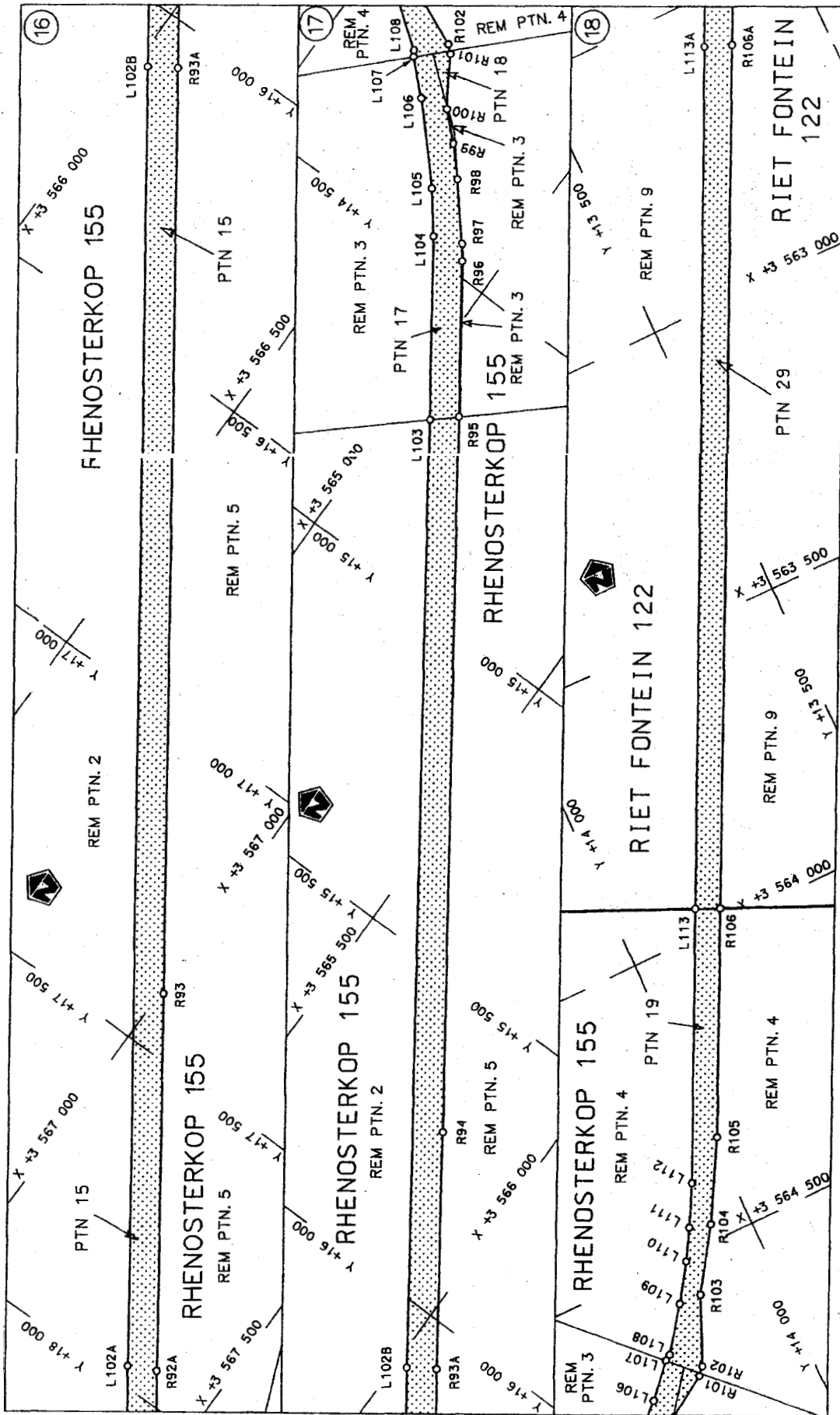
Vel Sheet 5 of 20	steldie padreserwe voor van 'n gedeelte represents the road reserve of a portion van Nasionale Roete N1 Seksie Section 8X	Die figuur getoon The figure shown
Plan P573/06		Die Suid Afrikaanse Nasionale Padagentskap Beperk The South African National Roads Agency Limited

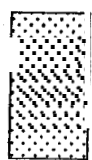
D.O.9.A



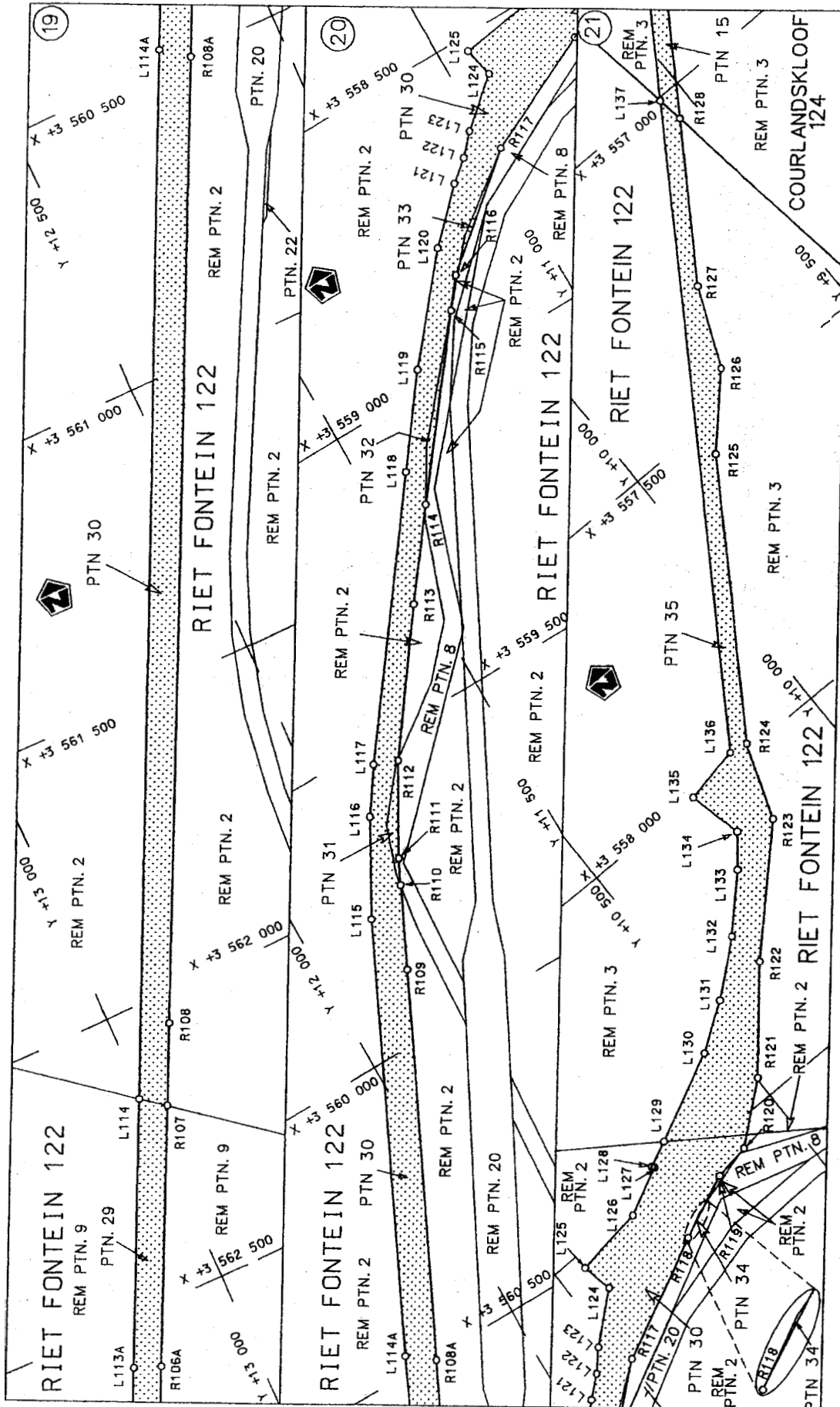
<p>Die Suid Afrikaanse Nasionale Padagentskap Beperk The South African National Roads Agency Limited</p>	<p>Die figuur getoon The figure shown</p> 	<p>steldie padreserwe voor van 'n gedeelte represents the road reserve of a portion van Nasionale Roete N1 of National Route N1</p> <p>Seksie 8X Section</p>	<p>Vel Sheet 6 of 20 Plan P573/06</p>
--	---	--	---

D.O.9.A



<p>Die Suid Afrikaanse Nasionale Padagentskap Beperk The South African National Roads Agency Limited</p>	<p>Die figuur getoon The figure shown</p>	 <p>stelais padreserwe voor van 'n gedeelte represents the road reserve of a portion van Nasionale Roete N1 of National Route</p>	<p>Vel Sheet 7 van of 20 Plan P573/06</p>
			<p>Section 8X</p>
			<p>D.O.9.A</p>





Die Suid Afrikaanse Nasionale Padagentskap Beperk  
The South African National Roads Agency Limited

Die figuur getoon  
The figure shown

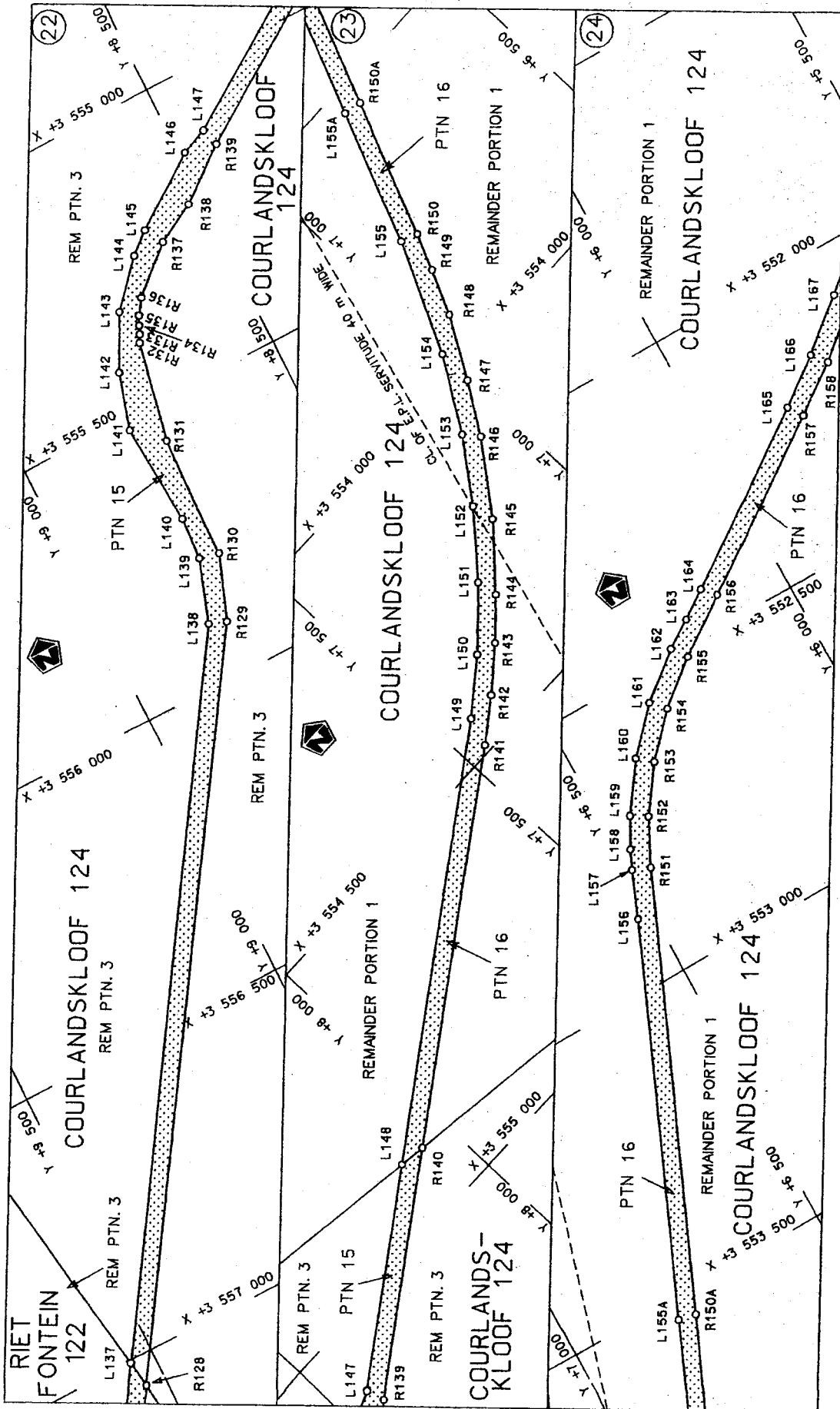
stel die padreserwe voor van 'n gedeelte  
represents the road reserve of a portion  
van Nasionale Roete N1  
of National Route N1

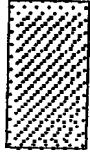
Vel Sheet 8 van of 20  
PI n 0573/J6

8X

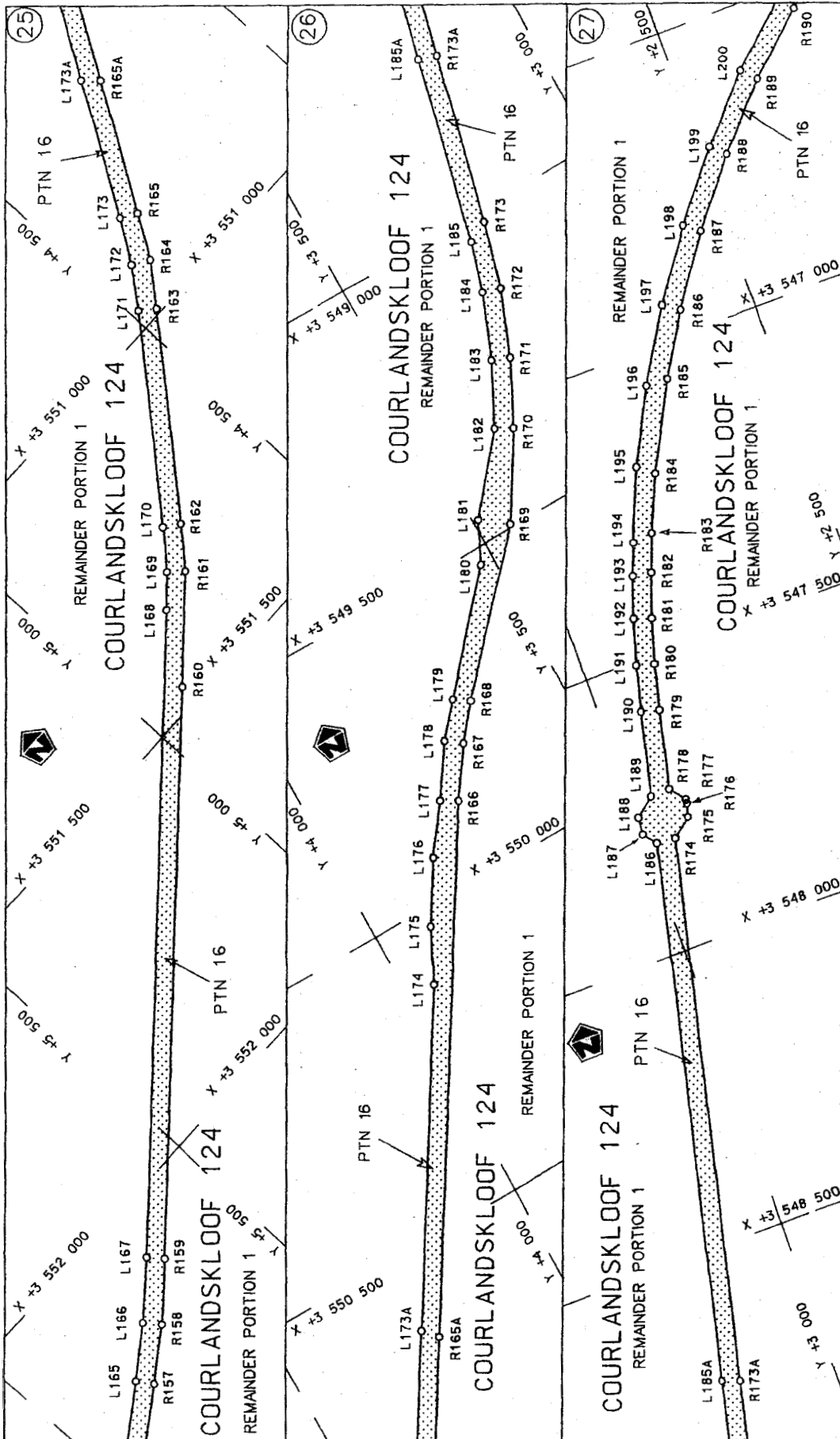
Seksie Section

D.O.9.A



Die Suid Afrikaanse Nasionale Padagentskap Beperk The South African National Roads Agency Limited	Die figuur getoon The figure shown		steidige padreserwe voor van 'n gedeelte represents the road reserve of a portion van Nasionale Roete N1 of National Route N1 Section	Vel Sheet
				9 of
				20
				Plan
				P573/06

D.O.9.A



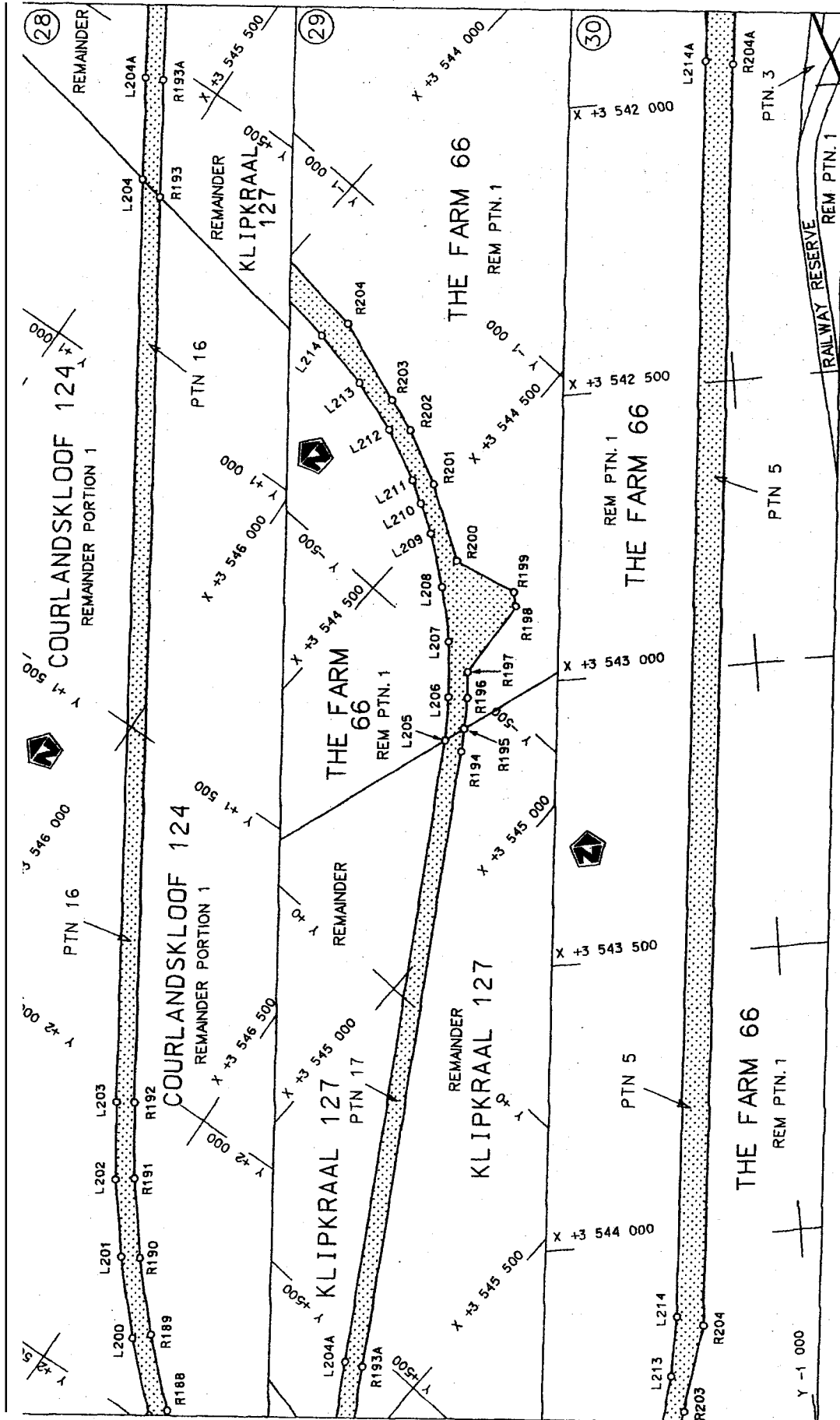
Vol	van
Sheet	of
10	20
Plan	P573/06


steldie padreserwe voor van 'n gedeelte represents the road reserve of a portion van Nasionale Roete N1 Sektie Section of National Route 8X

Die figuur getoon The figure shown

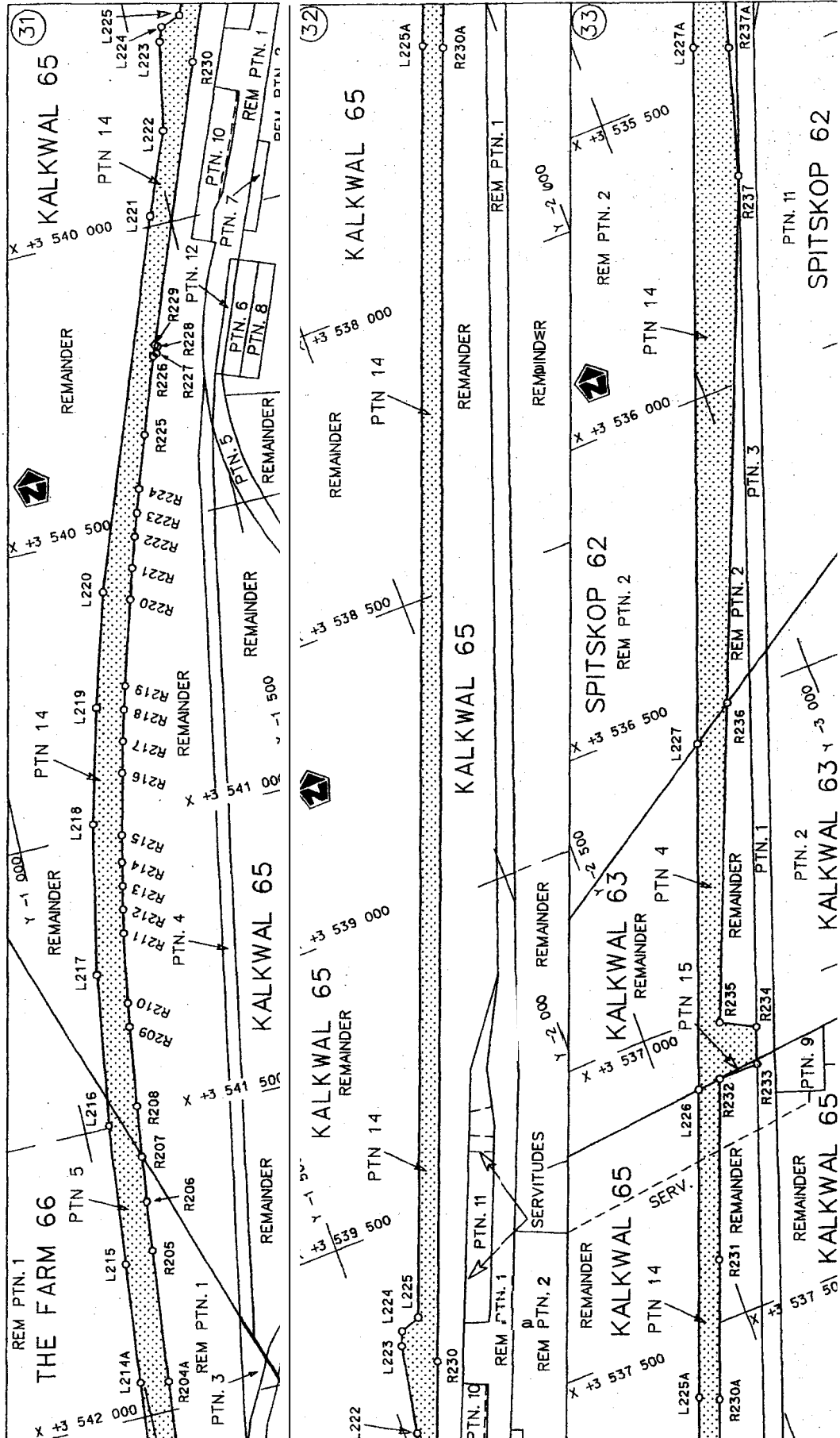
Die Suid Afrikaanse Nasionale Padagentskap Beperk The South African National Roads Agency Limited

D.O.9.A



<p>Die Suid Afrikaanse Nasionale Padogentskap Beprek The South African National Roads Agency Limited</p>	<p>Die figuur getoon The figure shown</p> 	<p>steldie padreserwe voor van 'n gedeelte represents the road reserve of a portion van Nasionale Roete N1 of National Route N1</p> <p>Seksie Section 8X</p>	<p>Vel Sheet 11 van 20 Plan P573/06</p>
--	---	--	---

D.O.97



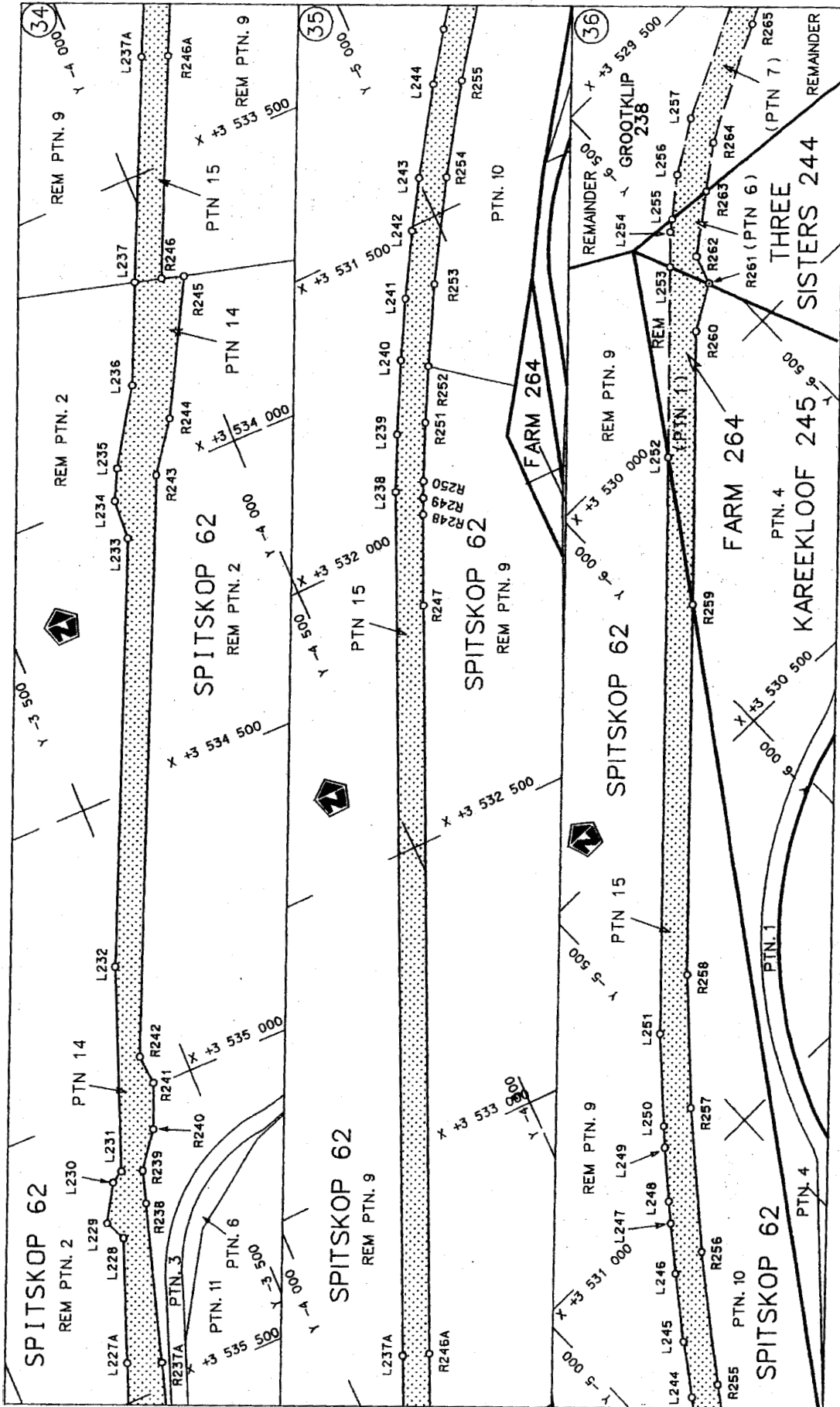
Die Suid Afrikaanse Nasionale Padagentskap Beperk  
 The South African National Roads Agency Limited

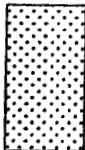
DH figuur getoon  
 The figure shown

stedië padres rwe v or van 'n geëiëlle  
 represents the road reserve of a portion  
 van Nasionale Roete N1 Se:isie  
 of National Route N1 Section

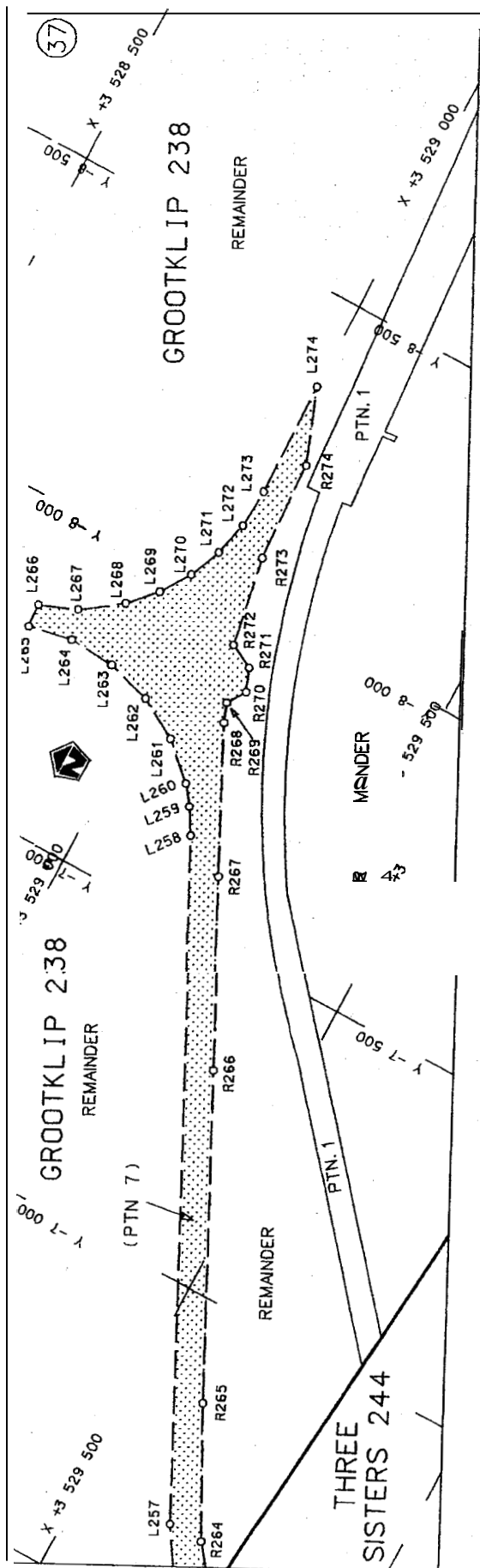
Vel Sheet 12 of 20  
 Plan n 572 / n c

D.O.9.A



Die Suid Afrikaanse Nasionale Padagentskap Beperk The South African National Roads Agency Limited	Die figuur getoon The figure shown		steldie padreserwe voor van 'n gedeelte represents the road reserve of a portion van Nasionale Roete N1 of National Route	Vel Sheet 13 of 20
				Plan P573/06

D.O.9.A



<p>Die Suid-Afrikaanse Nasionale Padagentskap Eeperk The South African National Roads Agency Limited</p>	<p>ie blaar stoon he figure - - - - - wn</p>	<p>staatsie padreserwe voor van 'n gedeelte represents the road reserve of a portion van Nasionale Roete N1 of National Route N1</p>	<p>Vel Sheet 14 of 20 Plan P573/06</p>
--	--	--	--

D.O.9.A

PADRESERWE KOÖRDINATE / ROAD RESERVE CO-ORDINATES							
LINKERKANT/LEFT HANDSIDE				REGTERKANT/RIGHT HANDSIDE			
	Y	X	WG 25°		Y	X	
L1	39 226.970	3 581 201.970		R1	39 214.830	3 581 200.530	
L2	39 362.240	3 580 117.070		R2	39 347.460	3 580 119.030	
L3	39 364.510	3 580 101.250		R3	39 349.050	3 580 105.810	
L4	39 368.230	3 580 091.500		R4	39 348.180	3 580 089.540	
L5	39 370.170	3 580 087.130		R5	39 343.430	3 580 078.350	
L6	39 375.180	3 580 082.170		R6	39 333.960	3 580 067.790	
L7	39 384.110	3 580 075.470		R7	39 323.570	3 580 059.720	
L8	39 393.360	3 580 071.350		R8	39 314.820	3 580 049.800	
L9	39 401.820	3 580 066.800		R9	39 310.350	3 580 041.590	
L10	39 410.780	3 580 059.860		R10	39 305.250	3 580 027.240	
L11	39 418.240	3 580 051.220		R11	39 303.820	3 580 012.070	
L12	39 423.490	3 580 042.590		R12	39 305.610	3 579 999.040	
L13	39 428.100	3 580 030.440		R13	39 309.180	3 579 988.210	
L14	39 430.310	3 580 016.660		R14	39 315.880	3 579 976.500	
L15	39 429.890	3 580 005.820		R15	39 323.380	3 579 965.640	
L16	39 427.850	3 579 996.050		R16	39 332.290	3 579 958.340	
L17	39 425.290	3 579 988.630		R17	39 344.080	3 579 952.050	
L18	39 418.860	3 579 977.150		R18	39 353.760	3 579 946.290	
L19	39 412.580	3 579 969.760		R19	39 359.710	3 579 939.980	
L20	39 406.360	3 579 964.170		R20	39 364.250	3 579 931.410	
L21	39 401.510	3 579 960.640		R21	39 367.610	3 579 919.650	
L22	39 392.950	3 579 951.950		R22	39 370.000	3 579 906.300	
L23	39 387.840	3 579 943.420		R23	39 375.450	3 579 882.390	
L24	39 387.130	3 579 940.160		R24	39 378.860	3 579 865.020	
L25	39 385.140	3 579 930.160		R25	39 385.740	3 579 812.040	
L26	39 385.770	3 579 921.940		R26	39 411.990	3 579 610.130	
L27	39 387.760	3 579 906.290		R27	39 412.320	3 579 476.790	
L28	39 392.220	3 579 864.850		R28	39 422.360	3 579 399.320	
L29	39 398.800	3 579 813.640		R29	39 430.010	3 579 340.830	
L30	39 423.630	3 579 620.280		R30	39 429.324	3 579 303.050	
L31	39 453.050	3 579 512.370		R31	39 421.720	3 579 249.510	
L32	39 462.600	3 579 400.350		R32	39 409.660	3 579 198.940	
L33	39 467.360	3 579 328.820		R33	39 401.720	3 579 175.580	
L34	39 461.160	3 579 242.620		R34	39 390.310	3 579 142.220	
L35	39 442.910	3 579 157.330		R35	39 363.510	3 579 083.650	
L36	39 393.750	3 579 031.670		R36	39 338.530	3 579 040.190	
L37	39 349.870	3 578 974.170		R37	39 308.920	3 578 996.580	
L38	39 324.520	3 578 940.160		R38	39 267.540	3 578 948.290	
L39	39 302.880	3 578 917.620		R39	39 202.550	3 578 887.990	
L40	39 269.390	3 578 884.640		R40	39 131.470	3 578 839.860	
L41	39 248.550	3 578 865.540		R41	39 076.060	3 578 813.100	
L42	39 213.960	3 578 838.500		R42	38 768.530	3 578 669.380	
L43	39 160.770	3 578 802.670		R43	38 750.720	3 578 661.500	
L44	39 076.050	3 578 726.020		R44	38 634.790	3 578 608.460	
L45	39 049.520	3 578 712.400		R45	38 617.270	3 578 615.300	
L46	38 888.350	3 578 673.060		R46	38 578.890	3 578 702.320	
L47	38 733.580	3 578 601.980		R47	38 455.710	3 578 646.280	
L48	38 387.040	3 578 442.310		R48	38 489.880	3 578 568.380	
L49	38 336.880	3 578 419.180		R49	38 479.710	3 578 537.110	
L50	38 216.870	3 578 330.250		R50	37 642.110	3 578 152.190	
L51	38 188.440	3 578 318.180		R51	37 261.300	3 577 977.000	
				Vel	15	Van 20	P573/06



PADRESERWE KOÖRDINATE / ROAD RESERVE CO-ORDINATES							
LINKERKANT/LEFT HAND SIDE			REGTERKANT/RIGHT HAND SIDE				
	Y	X	WG 25	Y	X		
L52	38 050.480	3 578 287.680		R52	37 235.870	3 577 965.300	
L53	37 282.980	3 577 934.970		R53	36 829.040	3 577 778.460	
L54	37 071.220	3 577 837.650		R54	36 120.700	3 577 452.740	
L55	36 829.990	3 577 726.930		R55	35 917.050	3 577 358.720	
L56	36 775.470	3 577 701.770		R56	35 713.850	3 577 265.070	
L57	36 387.050	3 577 522.850		R57	35 691.820	3 577 305.030	
L58	36 329.390	3 577 496.310		R58	35 181.880	3 577 003.270	
L59	35 877.350	3 577 288.190		R59	33 001.910	3 575 717.990	
L60	35 619.100	3 577 169.360		R60	32 855.060	3 575 609.010	
L61	35 461.960	3 577 090.490		R61	32 726.820	3 575 538.990	
L62	35 334.150	3 577 019.350		R62	32 716.810	3 575 554.170	
L63	35 240.850	3 576 965.670		R63	32 029.410	3 575 146.750	
L64	35 177.380	3 576 927.890		R64	32 045.050	3 575 120.370	
L65	34 788.230	3 576 696.280		R65	31 911.350	3 575 041.060	
L66	34 363.920	3 576 443.080		R66	31 768.770	3 574 956.480	
L67	33 912.900	3 576 173.730		R67	31 717.800	3 574 934.170	
L68	33 611.670	3 575 993.890		R68	29 983.720	3 573 976.540	
L69	33 166.670	3 575 728.300		R69	28 607.690	3 573 197.720	
L70	32 760.630	3 575 486.630		R70	28 082.250	3 572 905.890	
L71	32 321.280	3 575 225.230		R71	28 017.370	3 572 928.190	
L72	32 113.290	3 575 101.670		R72	27 974.980	3 572 898.960	
L73	31 760.450	3 574 891.790		R73	27 987.730	3 572 853.400	
L74	31 713.320	3 574 864.210		R74	27 885.540	3 572 795.830	
L75	31 668.670	3 574 839.080		R75	27 519.540	3 572 618.400	
L76	31 222.450	3 574 591.270		R76	27 423.160	3 572 545.820	
L77	30 775.960	3 574 343.140		R77	23 244.990	3 570 415.730	
L78	30 659.320	3 574 278.400		R78	23 251.890	3 570 402.240	
L79	30 457.430	3 574 166.240		R79	22 927.150	3 570 235.440	
L80	30 017.630	3 573 921.930		R80	22 717.580	3 570 121.310	
L81	29 585.350	3 573 681.640		R81	22 101.540	3 569 785.680	
L82	29 445.370	3 573 603.980		R82	21 915.510	3 569 680.530	
L83	28 993.700	3 573 352.970		R83	21 600.001	3 569 501.903	
L84	28 669.030	3 573 172.310		R84	19 877.480	3 568 526.770	
L85	28 222.510	3 572 924.220		R85	19 720.260	3 568 437.380	
L86	27 776.660	3 572 676.170		R86	19 644.730	3 568 396.740	
L87	27 703.230	3 572 635.480		R87	19 575.170	3 568 362.260	
L88	27 579.410	3 572 568.790		R88	19 284.630	3 568 221.860	
L89	24 589.980	3 571 027.890		R89	9 296.650	3 568 191.162	
L90	24 403.200	3 570 932.050		R90	8 377.860	3 567 672.880	
L91	23 522.810	3 570 478.480		R91	8 213.070	3 567 570.440	
L92	23 083.920	3 570 251.410		R92	8 133.980	3 567 520.300	
L93	22 897.210	3 570 155.060		R93	7 402.360	3 567 005.580	
L94	22 708.320	3 570 051.790		R94	5 729.580	3 565 825.250	
L95	21 947.780	3 569 623.430		R95	4 698.920	3 565 095.650	
L96	21 735.470	3 569 503.860		R96	4 475.670	3 564 937.740	
L97	19 950.390	3 568 498.500		R97	4 450.650	3 564 919.560	
L98	18 506.540	3 567 685.310		R98	4 364.740	3 564 845.860	
L99	18 376.550	3 567 610.310		R99	14 318.940	3 564 802.390	
L100	18 274.350	3 567 547.870		R100	14 277.240	3 564 756.930	
L101	18 173.750	3 567 482.760		R101	14 195.890	3 564 705.020	
L102	18 042.360	3 567 392.820		R102	14 184.250	3 564 691.510	
			Vel	16	Van	20	P573/06
			Sheet		of		

PADRESERWE KOORDINATE / ROAD RESERVE CO-ORDINATES					
LINKERKANT/LEFT HAND SIDE			REGTERKANT/RIGHT HAND SIDE		
	Y	X	WG 25	Y	X
L103	14 733.530	3 565 056.650	R103	14 135.430	3 564 575.820
L104	14 469.940	3 564 870.550	R104	14 066.160	3 564 471.640
L105	14 404.390	3 564 817.900	R105	13 993.040	3 564 336.840
L106	14 288.640	3 564 709.320	R106	13 819.440	3 563 973.740
L107	14 238.570	3 564 654.660	R107	12 964.060	3 562 184.670
L108	14 228.840	3 564 648.420	R108	12 901.060	3 562 052.890
L109	14 175.210	3 564 574.960	R109	11 861.850	3 559 880.200
L110	14 134.320	3 564 512.220	R110	11 796.620	3 559 744.130
L111	14 103.800	3 564 460.330	R111	11 775.590	3 559 700.250
L112	14 067.430	3 564 391.710	R112	11 690.230	3 559 550.360
L113	13 860.360	3 563 955.470	R113	11 526.820	3 559 322.800
L114	13 004.590	3 562 152.640	R114	11 419.400	3 559 180.450
L115	11 873.260	3 559 769.290	R115	11 207.090	3 558 907.620
L116	11 784.250	3 559 609.830	R116	11 168.170	3 558 857.590
L117	11 732.620	3 559 533.510	R117	11 985.560	3 558 705.400
L118	11 421.050	3 559 112.820	R118	10 772.650	3 558 603.110
L119	11 312.310	3 558 967.120	R119	10 659.490	3 558 553.010
L120	11 172.390	3 558 799.910	R120	10 594.570	3 558 543.480
L121	11 088.790	3 558 716.360	R121	10 497.560	3 558 462.860
L122	11 051.520	3 558 685.960	R122	10 365.480	3 558 304.870
L123	11 019.320	3 558 650.580	R123	10 187.510	3 558 123.000
L124	10 938.300	3 558 581.010	R124	10 140.570	3 557 988.920
L125	10 950.190	3 558 526.080	R125	9 860.360	3 557 554.080
L126	10 825.270	3 558 508.320	R126	9 756.890	3 557 443.180
L127	10 741.570	3 558 466.960	R127	9 697.930	3 557 302.720
L128	10 744.110	3 558 463.080	R128	9 536.520	3 557 052.410
L129	10 699.880	3 558 441.870	R129	8 797.220	3 555 905.940
L130	10 544.640	3 558 367.410	R130	8 754.890	3 555 789.870
L131	10 464.570	3 558 312.610	R131	8 748.250	3 555 569.600
L132	10 376.050	3 558 238.020	R132	8 712.890	3 555 393.500
L133	10 293.740	3 558 152.190	R133	8 705.900	3 555 379.860
L134	10 251.520	3 558 099.340	R134	8 699.620	3 555 366.000
L135	10 275.600	3 558 001.480	R135	8 691.880	3 555 349.840
L136	10 173.950	3 557 982.580	R136	8 674.110	3 555 323.420
L137	9 543.990	3 557 005.530	R137	8 595.480	3 555 253.290
L138	8 827.790	3 555 894.730	R138	8 523.660	3 555 215.270
L139	8 789.850	3 555 782.370	R139	8 431.840	3 555 142.550
L140	8 784.810	3 555 705.750	R140	8 058.170	3 554 890.840
L141	8 798.610	3 555 523.350	R141	7 459.170	3 554 487.340
L142	8 769.480	3 555 423.120	R142	7 386.050	3 554 434.870
L143	8 720.600	3 555 327.700	R143	7 313.470	3 554 376.480
L144	8 651.660	3 555 251.850	R144	7 249.460	3 554 318.350
L145	8 614.230	3 555 220.070	R145	7 153.850	3 554 222.150
L146	8 488.380	3 555 130.250	R146	7 061.560	3 554 107.570
L147	8 441.400	3 555 110.680	R147	7 003.840	3 554 022.670
L148	8 104.490	3 554 883.720	R148	6 941.210	3 553 919.320
L149	7 440.820	3 554 436.660	R149	6 904.050	3 553 842.820
L150	7 350.120	3 554 367.010	R150	6 875.510	3 553 779.860
L151	7 254.490	3 554 280.630	R151	6 463.760	3 552 811.620
L152	7 160.770	3 554 180.950	R152	6 422.440	3 552 729.820
L153	7 081.070	3 554 080.240	R153	6 366.610	3 552 649.780

Sheet of

PADRESERWE KOORDINATE / ROAD RESERVE CO-ORDINATES						
LINKERKANT/LEFT HAND SIDE			REGTERKANT/RIGHT HAND SIDE			
	Y	X	WG 25		Y	X
L154	7 000.750	3 553 957.690		R154	6 300.040	3 552 578.280
L155	6 904.680	3 553 767.230		R155	6 222.740	3 552 516.290
L156	6 527.930	3 552 880.560		R156	6 122.180	3 552 446.170
L157	6 494.860	3 552 798.600		R157	5 831.140	3 552 245.650
L158	6 479.670	3 552 764.960		R158	5 746.530	3 552 185.810
L159	6 451.050	3 552 712.020		R159	5 659.190	3 552 112.350
L160	6 392.420	3 552 628.020		R160	4 912.710	3 551 466.790
L161	6 322.910	3 552 553.160		R161	4 761.750	3 551 334.500
L162	6 242.550	3 552 488.530		R162	4 706.610	3 551 274.410
L163	6 192.970	3 552 456.460		R163	4 462.690	3 550 991.890
L164	6 143.470	3 552 422.420		R164	4 408.760	3 550 926.130
L165	5 849.380	3 552 219.190		R165	4 363.930	3 550 856.430
L166	5 767.380	3 552 159.310		R166	3 759.240	3 549 865.580
L167	5 679.230	3 552 087.520		R167	3 703.140	3 549 783.300
L168	4 833.480	3 551 355.890		R168	3 656.330	3 549 725.590
L169	4 784.960	3 551 311.100		R169	3 443.780	3 549 494.610
L170	4 731.610	3 551 254.240		R170	3 358.270	3 549 353.050
L171	4 486.820	3 550 970.800		R171	3 303.260	3 549 244.880
L172	4 436.980	3 550 907.850		R172	3 259.090	3 549 133.080
L173	4 390.860	3 550 839.400		R173	3 228.290	3 549 018.760
L174	3 952.980	3 550 121.910		R174	2 949.320	3 547 810.870
L175	3 908.100	3 550 031.420		R175	2 915.800	3 547 783.690
L176	3 846.040	3 549 929.110		R176	2 909.040	3 547 761.390
L177	3 786.900	3 549 849.450		R177	2 908.910	3 547 754.330
L178	3 729.880	3 549 763.430		R178	2 929.900	3 547 727.020
L179	3 682.650	3 549 707.630		R179	2 898.740	3 547 592.730
L180	3 525.600	3 549 528.850		R180	2 878.920	3 547 515.570
L181	3 490.730	3 549 459.330		R181	2 856.120	3 547 439.430
L182	3 387.930	3 549 337.380		R182	2 830.200	3 547 364.310
L183	3 334.210	3 549 232.980		R183	2 805.760	3 547 301.230
L184	3 290.880	3 549 122.750		R184	2 764.380	3 547 206.650
L185	3 265.880	3 549 037.040		R185	2 689.080	3 547 061.890
L186	2 981.280	3 547 807.640		R186	2 626.310	3 546 958.500
L187	2 999.490	3 547 785.100		R187	2 545.410	3 546 844.370
L188	2 996.610	3 547 754.960		R188	2 457.410	3 546 736.890
L189	2 962.890	3 547 728.280		R189	2 362.180	3 546 635.880
L190	2 929.710	3 547 584.990		R190	2 261.080	3 546 542.550
L191	2 909.620	3 547 506.850		R191	2 151.570	3 546 454.900
L192	2 886.460	3 547 429.400		R192	2 042.380	3 546 379.200
L193	2 862.510	3 547 358.710		R193	702.470	3 545 515.240
L194	2 841.880	3 547 305.110		R194	- 388.620	3 544 811.700
L195	2 791.620	3 547 185.500		R195	- 421.870	3 544 788.390
L196	2 727.130	3 547 060.280		R196	- 466.630	3 544 756.990
L197	2 653.630	3 546 939.330		R197	- 500.560	3 544 726.540
L198	2 572.100	3 546 824.270		R198	- 644.000	3 544 712.760
L199	2 482.260	3 546 714.580		R199	- 660.520	3 544 693.640
L200	2 385.660	3 546 612.040		R200	- 634.160	3 544 579.980
L201	2 278.480	3 546 513.670		R201	- 707.580	3 544 457.860
L202	2 171.820	3 546 428.340		R202	- 748.990	3 544 363.710
L203	2 059.680	3 546 352.370		R203	- 767.770	3 544 304.150
L204	693.930	3 545 471.860		R204	- 814.650	3 544 154.610

Sheet of

<b>PADRESERWE KOORDINATE / ROAD RESERVE CO-ORDINATES</b>			
<b>LINKERKANT/LEFT HAND SIDE</b>			
	<b>Y</b>	<b>X</b>	<b>W</b>
L205	- 384.690	3 544 776.470	
L206	- 445.580	3 544 731.120	
L207	- 518.350	3 544 665.270	
L208	- 583.360	3 544 591.690	
L209	- 639.810	3 544 511.520	
L210	- 667.560	3 544 463.890	
L211	- 687.110	3 544 425.450	
L212	- 724.590	3 544 334.520	
L213	- 751.620	3 544 240.100	
L214	- 768.970	3 544 134.590	
L215	- 1 016.180	3 541 735.300	
L216	- 1 041.590	3 541 496.170	
L217	- 1 080.640	3 541 238.170	
L218	- 1 133.620	3 540 982.630	
L219	- 1 183.950	3 540 788.300	
L220	- 1 239.740	3 540 595.620	
L221	- 1 466.030	3 539 983.190	
L222	- 1 520.950	3 539 846.080	
L223	- 1 549.560	3 539 695.310	
L224	- 1 558.580	3 539 671.330	
L225	- 1 592.340	3 539 658.660	
L226	- 2 559.580	3 537 112.530	
L227	- 2 771.430	3 536 554.870	
L228	- 3 275.510	3 535 227.960	
L229	- 3 259.480	3 535 192.600	
L230	- 3 296.750	3 535 129.570	
L231	- 3 317.850	3 535 116.710	
L232	- 3 446.390	3 534 778.810	
L233	- 3 757.790	3 534 084.690	
L234	- 3 761.860	3 534 014.380	
L235	- 3 787.610	3 533 963.510	
L236	- 3 868.360	3 533 838.540	
L237	- 3 942.980	3 533 672.280	
L238	- 4 732.500	3 531 913.100	
L239	- 4 776.990	3 531 822.960	
L240	- 4 838.090	3 531 706.430	
L241	- 4 891.170	3 531 611.120	
L242	- 4 952.360	3 531 507.470	
L243	- 5 002.100	3 531 427.890	
L244	- 5 094.410	3 531 288.300	
L245	- 5 152.150	3 531 206.430	
L246	- 5 223.820	3 531 109.960	
L247	- 5 278.260	3 531 039.920	
L248	- 5 302.830	3 531 008.860	
L249	- 5 363.730	3 530 935.290	
L250	- 5 387.980	3 530 906.670	
L251	- 5 495.870	3 530 783.790	
L252	- 6 211.410	3 530 055.230	
L253	- 6 446.770	3 529 815.580	
L254	- 6 490.020	3 529 771.540	
L255	- 6 507.820	3 529 757.040	
			Vel 19 Van 20 Sheet of P573/06

PADRESERWEKOÖRDINATE / ROAD RESERVE CO-ORDINATES					
LINKERKANT/LEFT HAND SIDE			REGTERKANT/RIGHT HAND SIDE		
	Y	X	WG 25	Y	X
L256	- 6 568.860	3 529 707.320	1256	- 5 283.770	3 531 114.990
L257	- 6 654.750	3 529 652.590	1257	- 5 444.650	3 530 917.980
L258	- 7 631.030	3 529 161.730	1258	- 5 602.720	3 530 742.560
L259	- 7 670.870	3 529 138.120	1259	- 6 063.080	3 530 273.910
L260	- 7 700.910	3 529 114.810	1260	- 6 400.900	3 529 930.190
L261	- 7 752.410	3 529 058.510	1261	- 6 476.690	3 529 885.350
L262	- 7 789.910	3 528 992.120	1262	- 6 493.710	3 529 835.640
L263	- 7 811.540	3 528 919.160	1263	- 6 585.450	3 529 764.520
L264	- 7 816.240	3 528 843.110	1264	- 6 654.060	3 529 711.340
L265	- 7 803.040	3 528 771.940	1265	- 6 850.600	3 529 607.540
L266	- 7 840.900	3 528 769.540	1266	- 7 323.630	3 529 368.850
L267	- 7 864.190	3 528 829.330	1267	- 7 595.280	3 529 232.780
L268	- 7 908.750	3 528 891.540	1268	- 7 815.550	3 529 122.300
L269	- 7 950.670	3 528 930.670	1269	- 7 845.620	3 529 110.600
L270	- 7 998.450	3 528 962.210	1270	- 7 875.480	3 529 130.600
L271	- 8 050.360	3 528 985.160	1271	- 7 911.790	3 529 116.350
L272	- 8 106.100	3 528 999.260	1272	- 7 931.590	3 529 076.140
L273	- 8 169.070	3 529 003.930	1273	- 8 075.800	3 529 051.500
L274	- 8 357.190	3 529 000.330	1274	- 8 237.870	3 529 044.690
C1	39 365.630	3 580 068.890	232	39 318.530	3 580 040.060
c 2	39 373.100	3 580 068.540	233	39 323.770	3 580 048.010
c 3	39 380.510	3 580 067.300	34	39 330.270	3 580 054.900
c 4	39 389.410	3 580 064.180	35	39 337.930	3 580 060.480
c 5	39 397.210	3 580 059.990	236	39 346.370	3 580 064.770
C6	39 405.060	3 580 053.810	37	39 355.330	3 580 067.620
c7	39 411.490	3 580 046.560			
C8	39 416.240	3 580 038.990			
C9	39 419.900	3 580 029.640			
C10	39 421.870	3 580 020.270			
C11	39 422.190	3 580 010.840			
c12	39 420.910	3 580 001.520			
C13	39 417.940	3 579 992.360			
C14	39 413.530	3 579 983.970			
C15	39 407.770	3 579 976.470			
C16	39 401.200	3 579 970.440			
C17	39 392.940	3 579 965.060			
C18	39 384.570	3 579 961.490			
C19	39 375.330	3 579 959.250			
c20	39 366.200	3 579 958.610			
c21	39 357.140	3 579 959.510			
c22	39 348.300	3 579 961.960			
C23	39 339.630	3 579 965.890			
C24	39 331.860	3 579 971.350			
C25	39 325.180	3 579 977.940			
C26	39 319.640	3 579 985.670			
C27	39 315.530	3 579 994.170			
C28	39 312.940	3 580 003.260			
C29	39 311.900	3 580 012.680			
C30	39 312.530	3 580 022.150			
C31	39 314.740	3 580 031.380			
			Vel 20	Van 20	P573/06
			Sheet	of	