

## GOVERNMENT NOTICES GOEWERMENSKENNISGEWINGS

### DEPARTMENT OF TRANSPORT DEPARTEMENT VAN VERVOER

No. 729

28 July 2006

#### THE SOUTH AFRICAN NATIONAL ROAD AGENCY LIMITED

#### AMENDMENT OF DECLARATION No. 1322 OF 1989 AND DECLARATION OF NATIONAL ROAD: NATIONAL ROUTE 1, SECTION 5X: LAINGSBURG – PRINS ALBERT ROAD: PROVINCE OF WESTERN CAPE

By virtue of section 40 (1)(b) of the South African National Roads Agency Limited and the National Roads Act, 1998 (Act No. 7 of 1998), I hereby amend Declaration No. 1322 of 1989, schedule para. (1), to exclude section 5 of the N1, being the section from the intersection of Voortrekker and Humphreys Streets in Laingsburg up to Portion 10 of the farm Goeiemoed No. 90, and by virtue of section 40(1)(a) of the said Act, I hereby declare the route, as indicated on the subjoined Plan P556/2005, sheets 1 to 21, as a National Road.



\_\_\_\_\_  
MINISTER OF TRANSPORT

No. 729

28 Julie 2006

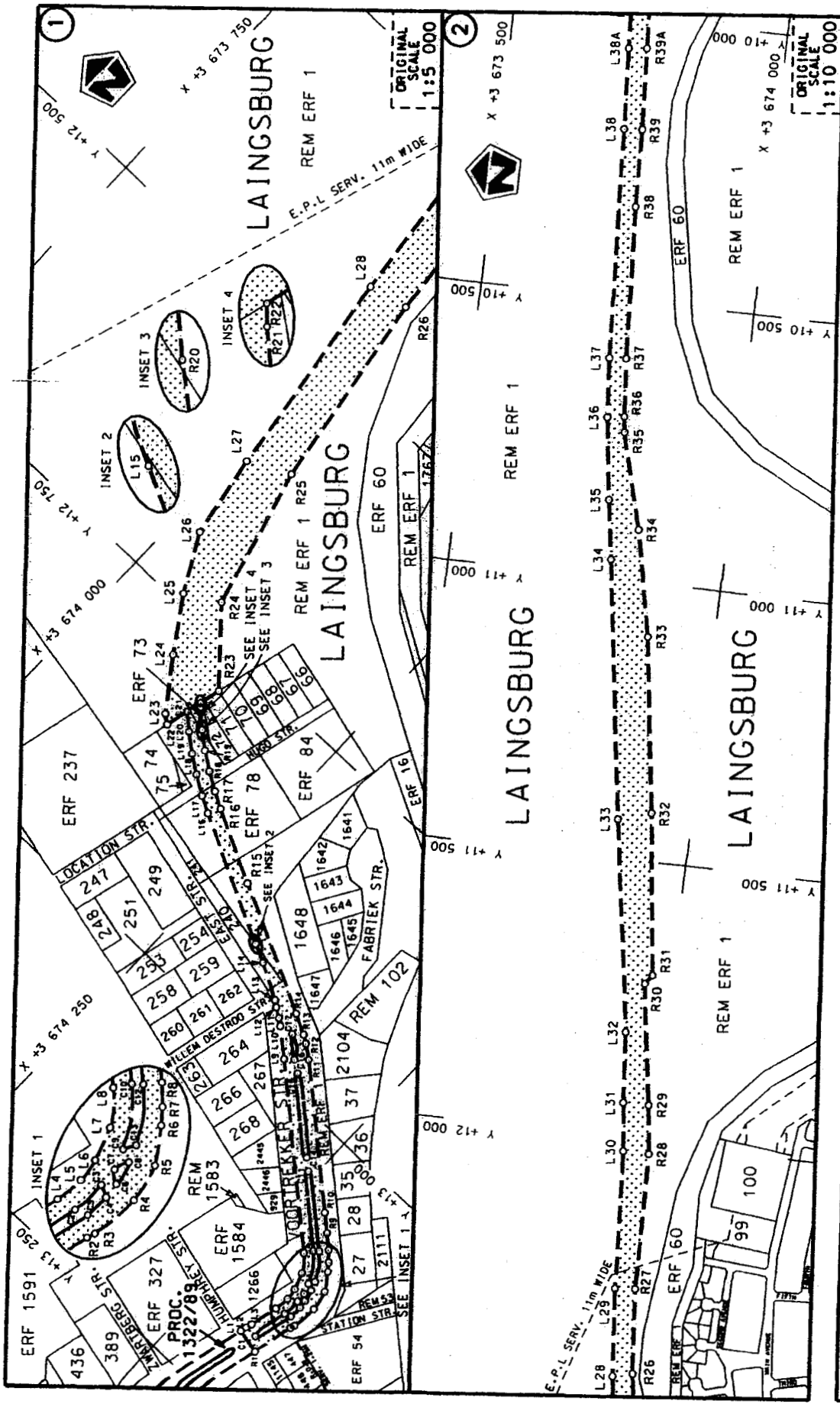
#### DIE SUID AFRIKAANSE NASIONALE PADAGENTSAP BEPERK

#### WYSIGING VAN VERKLARING NO. 1322 VAN 1989 EN VERKLARING VAN NASIONALE PAD: NASIONALE ROETE 1 SEKSIE 5X: LAINGSBURG – PRINS ALBERT PAD: PROVINSIE VAN WES KAAP

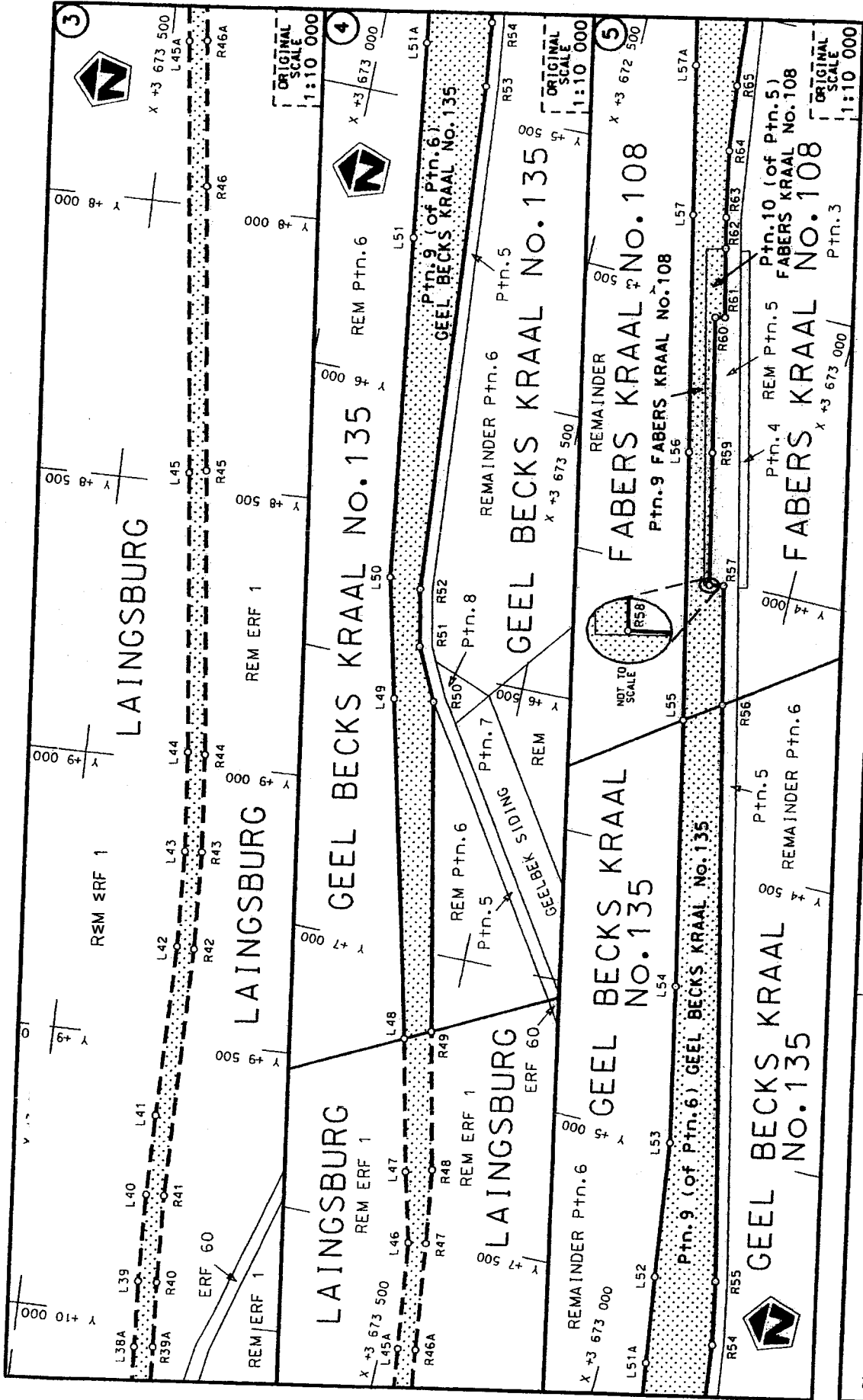
Kragtens Artikel 40(1)(b) van die Suid Afrikaanse Nasionale Padagentskap Beperk en die Nasionale Paaie Wet, 1998 (Wet No. 7 van 1998), wysig ek hiermee Verklaring No. 1322 van 1989, bylaag paragraaf (1), deur seksie 5 van die N1, die seksie vanaf die kruising van Voortrekker en Humphreys Strate in Laingsburg tot Gedeelte 10 van die plaas Goeiemoed No. 90, uit te sluit en kragtens Artikel 40(1)(a) van genoemde Wet verklaar ek hiermee die roete soos aangetoon op meegaande Plan P556/2005, velle 1 tot 21, as 'n Nasionale Pad.



\_\_\_\_\_  
MINISTER VAN VERVOER

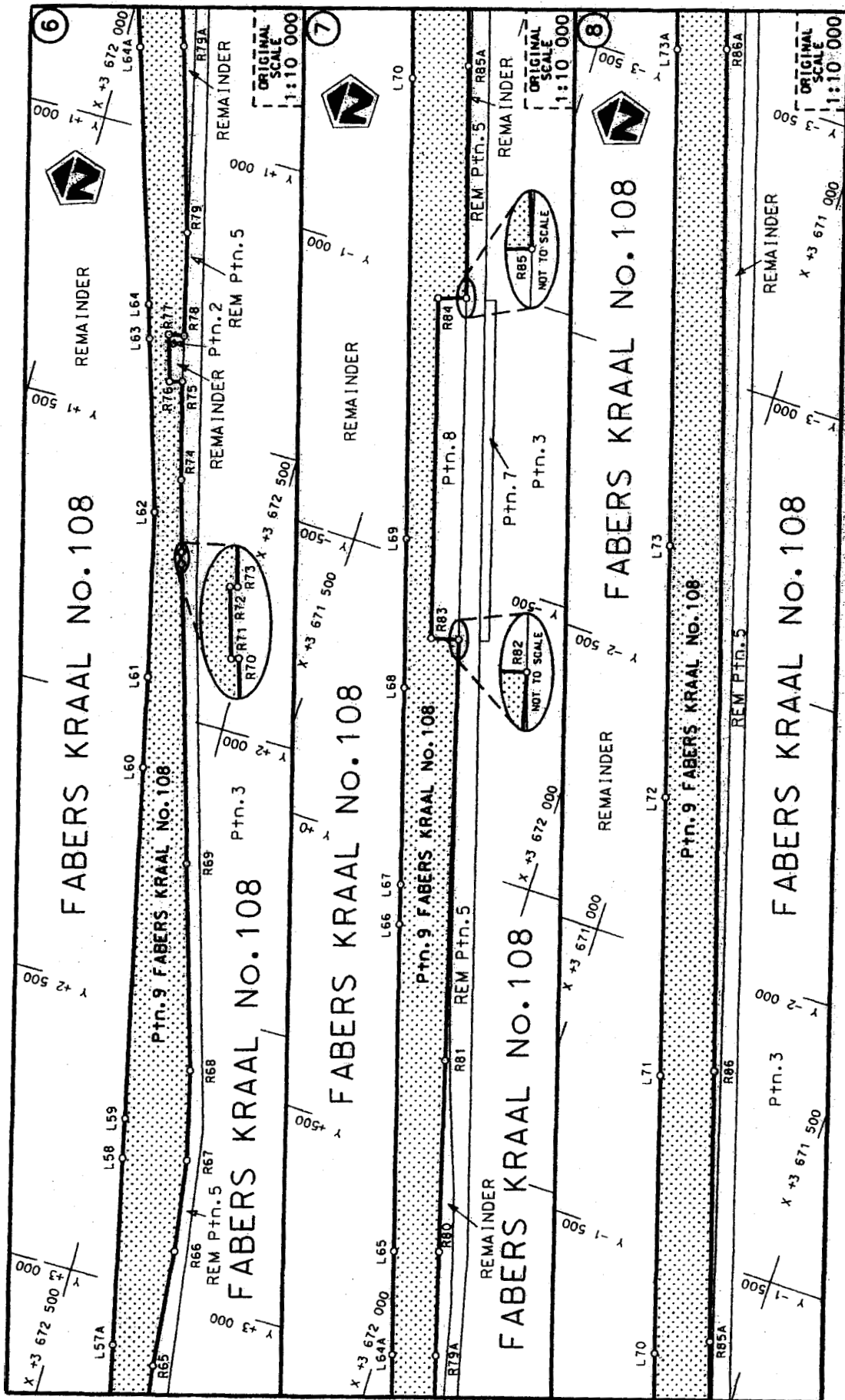


<p>Die Suid-Afrikaanse Nasionale Prosjektieskema Bepaal:</p> <p>The South African National Road Survey Limiting</p>		<p>Die figuur getoon:</p> <p>The figure shown</p>	<p>situering paarswys vir 'n gedeelte</p> <p>represents the road reserve of a portion</p> <p>van Nasionale Roete N1</p> <p>of National Route N1</p>	<p>5X</p>	<p>Plan P556/05</p>
<p>Vel Sheet 1 of 21</p>		<p>Seksie Section</p>		<p>D.O.9.A</p>	



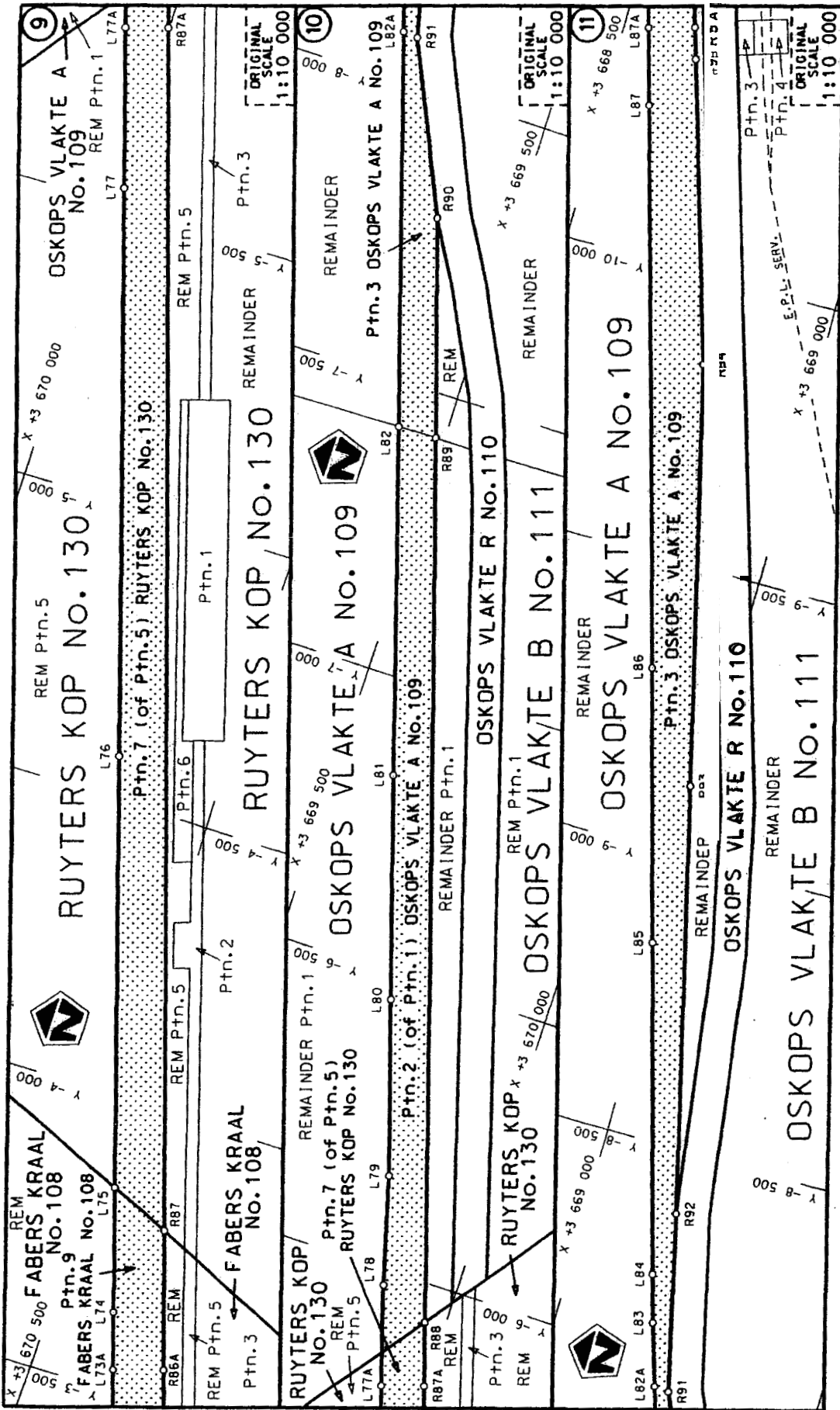
<p>Die Suid Afrikaanse Nasionale Padagentskap Beperk The South African National Roads Agency Limited</p>	<p>Die figuur getoon The figure shown</p>	<p>represente die ad-reserve of a portion van Nasionale Route N1 Seksie Section</p>	<p>5X</p>	<p>Plan P556/05</p>
<p>Vel Sheet 2 of 21</p>		<p>Original Scale 1:10 000</p>		

D.O.9.A



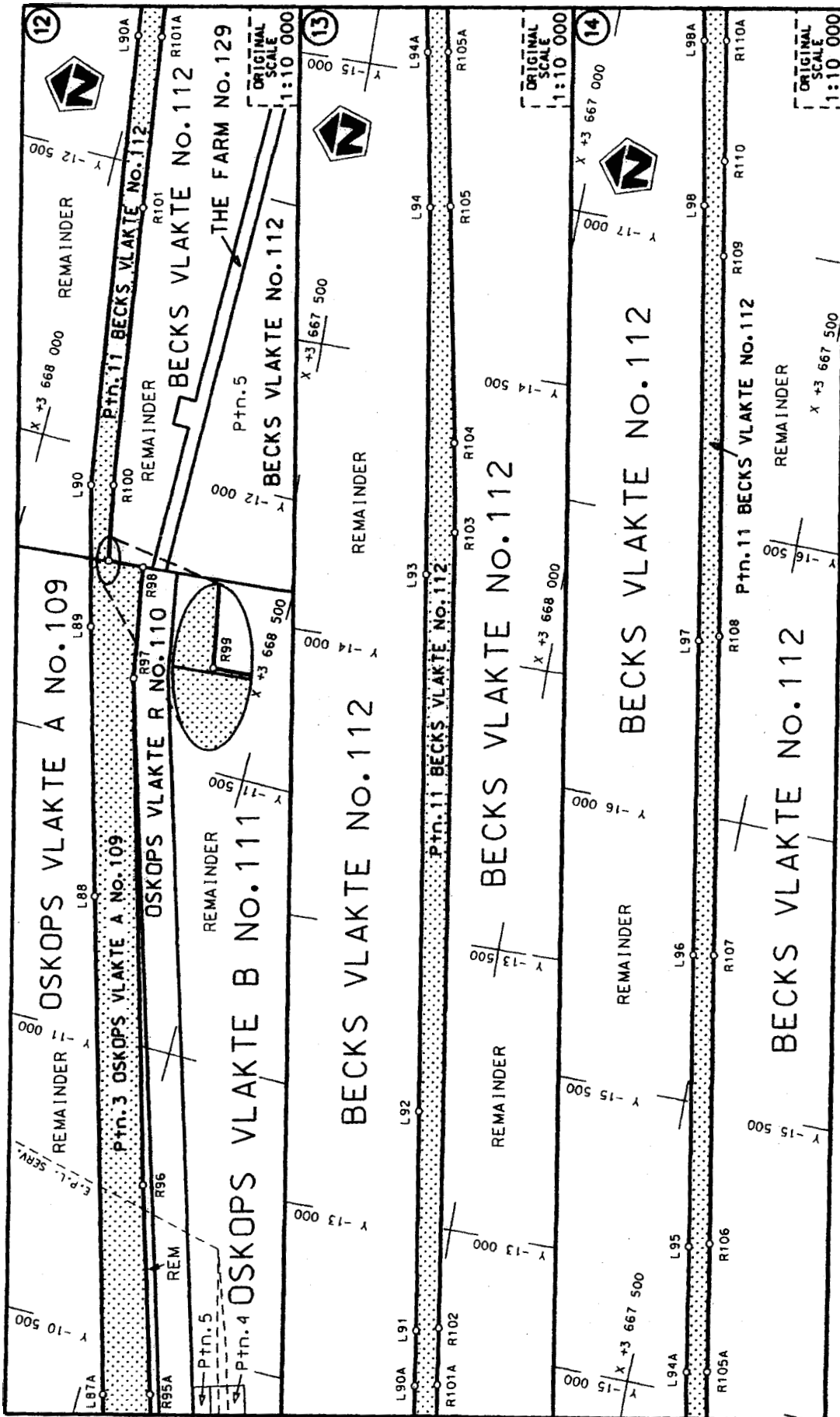
<p>Die Suid Afrikaanse Nasionale Padagentskap Beperk The South African National Roads Agency Limited</p>	<p>Die figuur getoon The figure shown</p>	<p>stelt die padreserwe voor van 'n gedeelte represents the road reserve of a portion van Nasionale Roete of National Route</p>	<p>Vel Sheet 3 of 21 Plan P556/05</p>
			<p>N1 Seksie Section 5X</p>

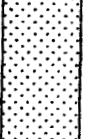
D.O.9.A



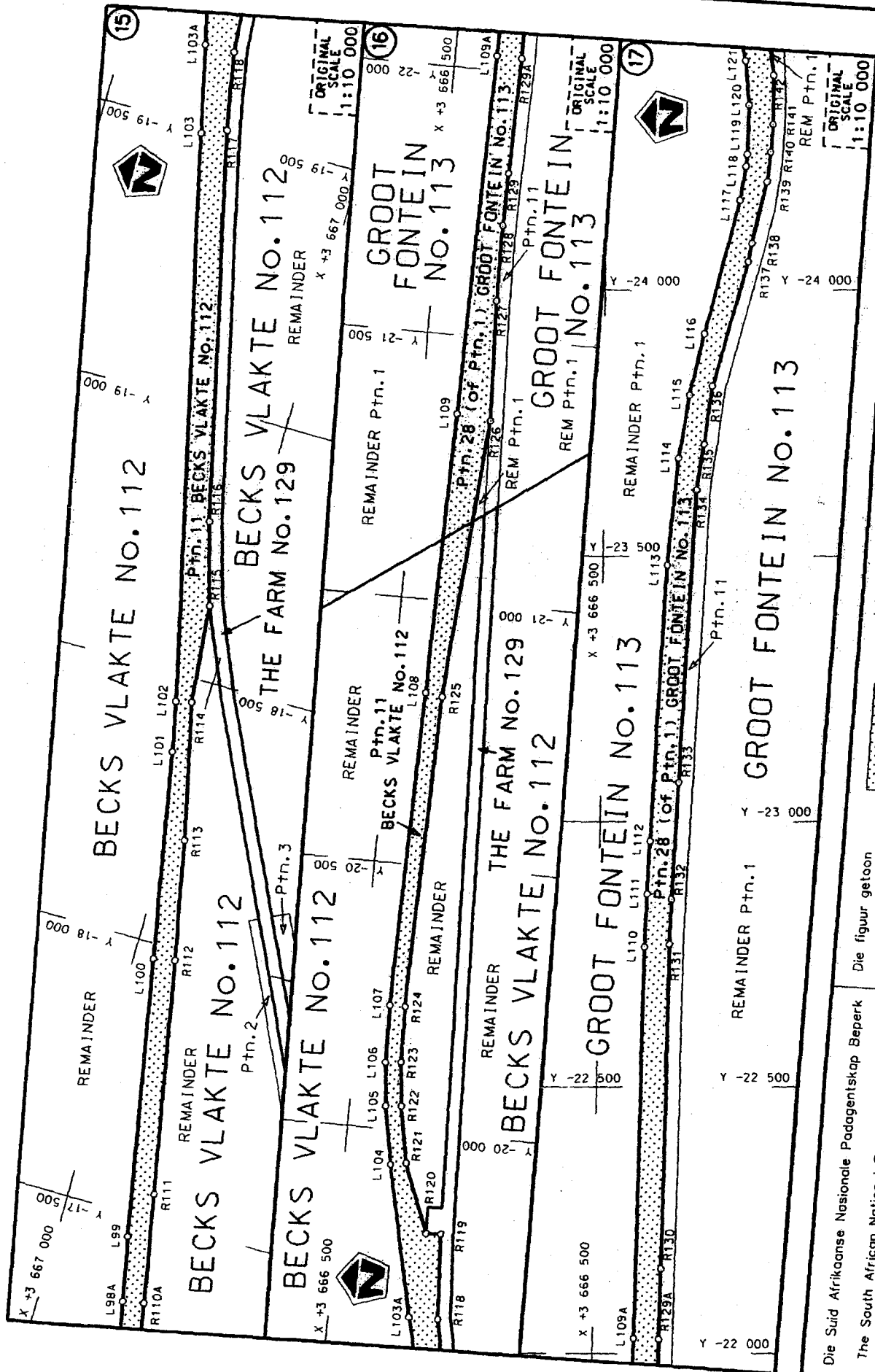
<p>Die Suid Afrikaanse Nasionale Paddagentskap Beperk The South African National Roads Agency Limited</p>	<p>Die figuur getoon The figure shown</p>	<p>steldie padreserwe voor van 'n gedeelte represents the road reserve of a portion van Nasionale Roete N1 of National Route</p>	<p>Vel Sheet 4 van of 21 Plan P556/05</p>
---	---	--	---

NO. 109

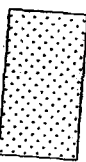


Die Suid Afrikaanse Nasionale Padagentskap Beperk The South African National Roads Agency Limited	Die figuur getoon The figure shown	 steldie padreserwe voor van 'n gedeelte represents the road reserve of a portion van Nasionale Roete N1 of National Route	Vel Sheet 5 of 21 Plan P556/05
--	---------------------------------------	--	-----------------------------------

D.O.9.A



steldie -padreserwe voor van 'n gedeelte  
represents the road reserve of a portion  
van Nasionale Roete N1  
of National Route



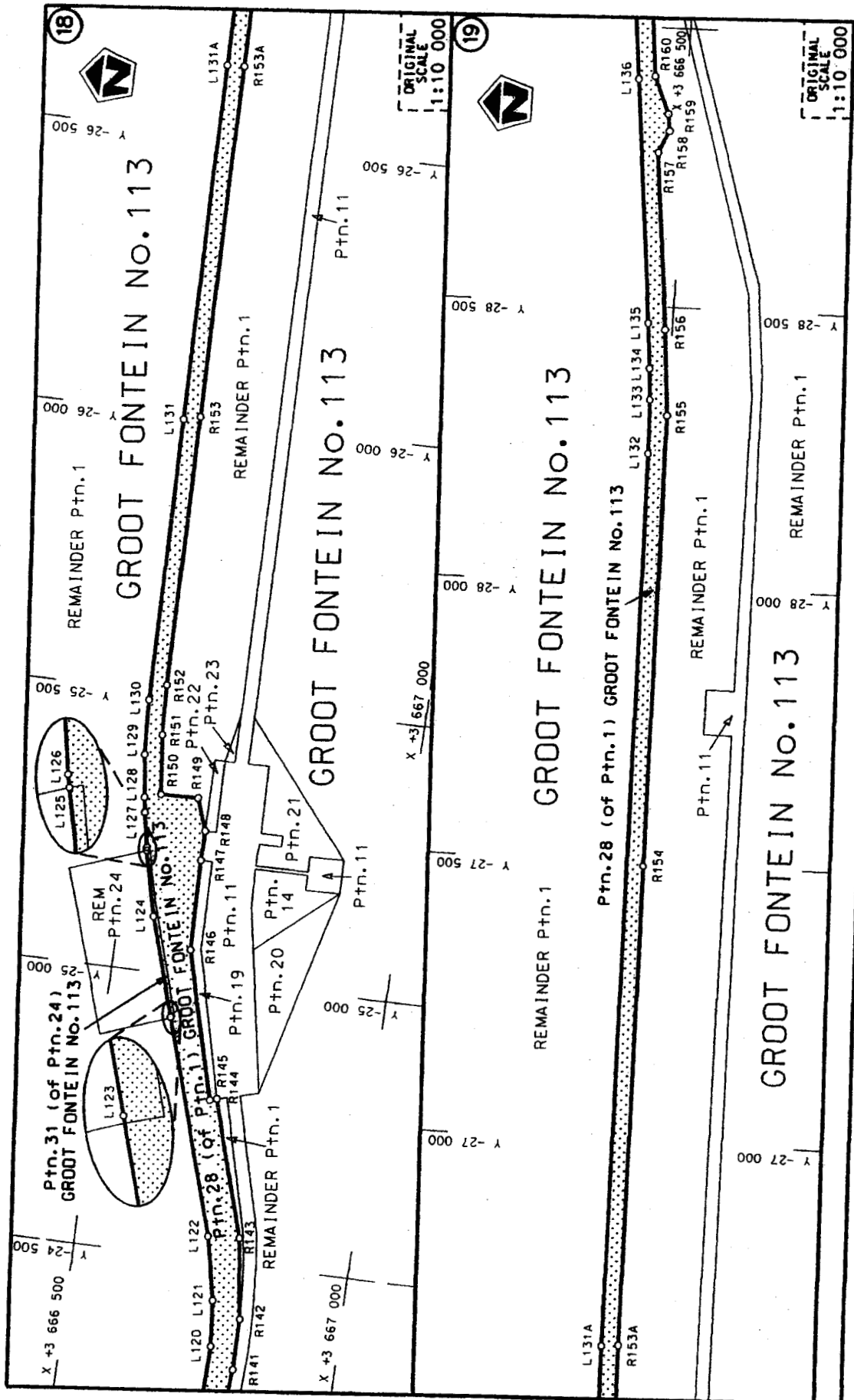
Die figuur getoon  
The figure shown

Die Suid Afrikaanse Nasionale Padagentskap Beperk  
The South African National Roads Agency Limited

Vel  
Sheet 6 of 21  
Plan P556/05

5X  
Seksie  
Section

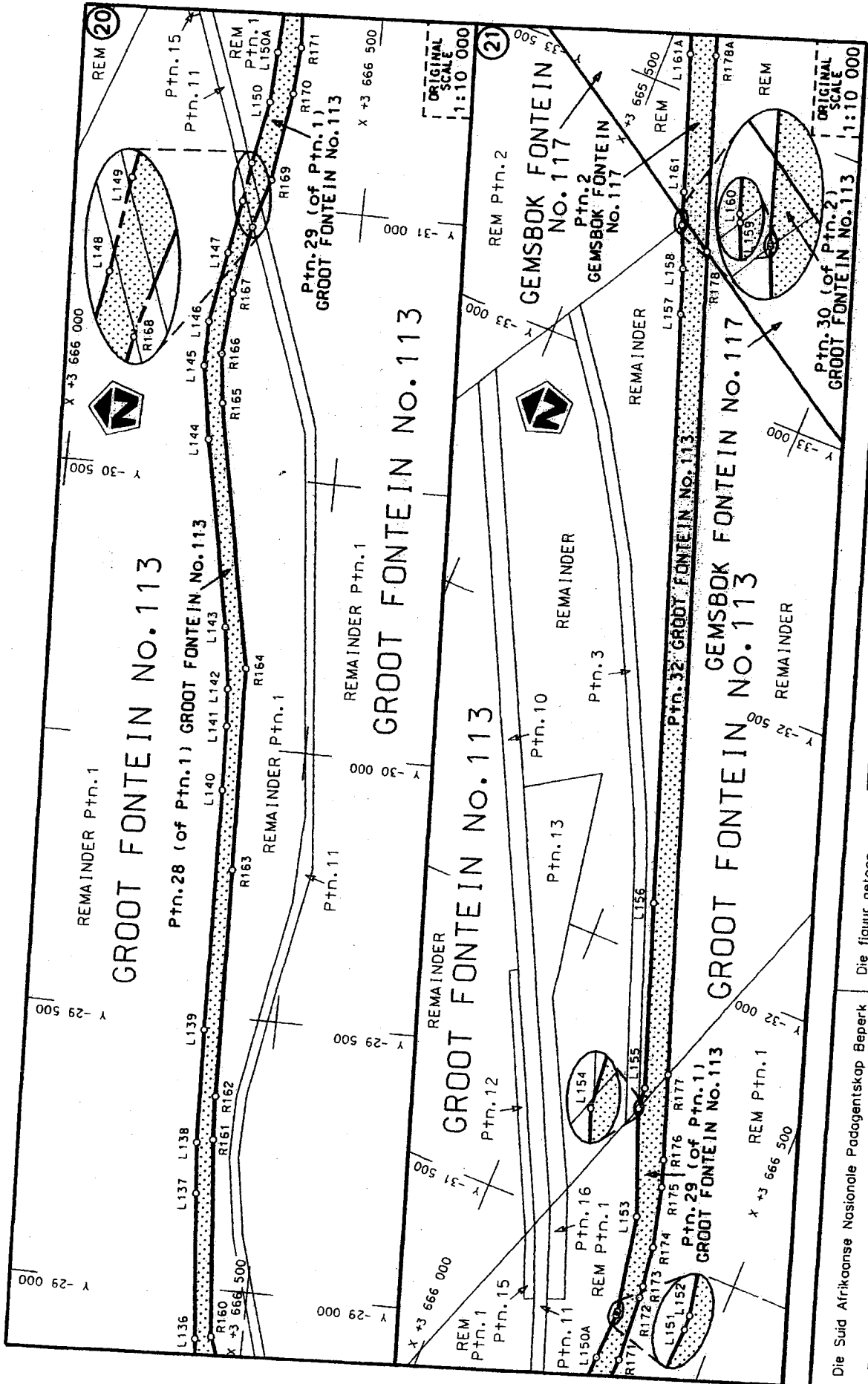
D.O.9.A



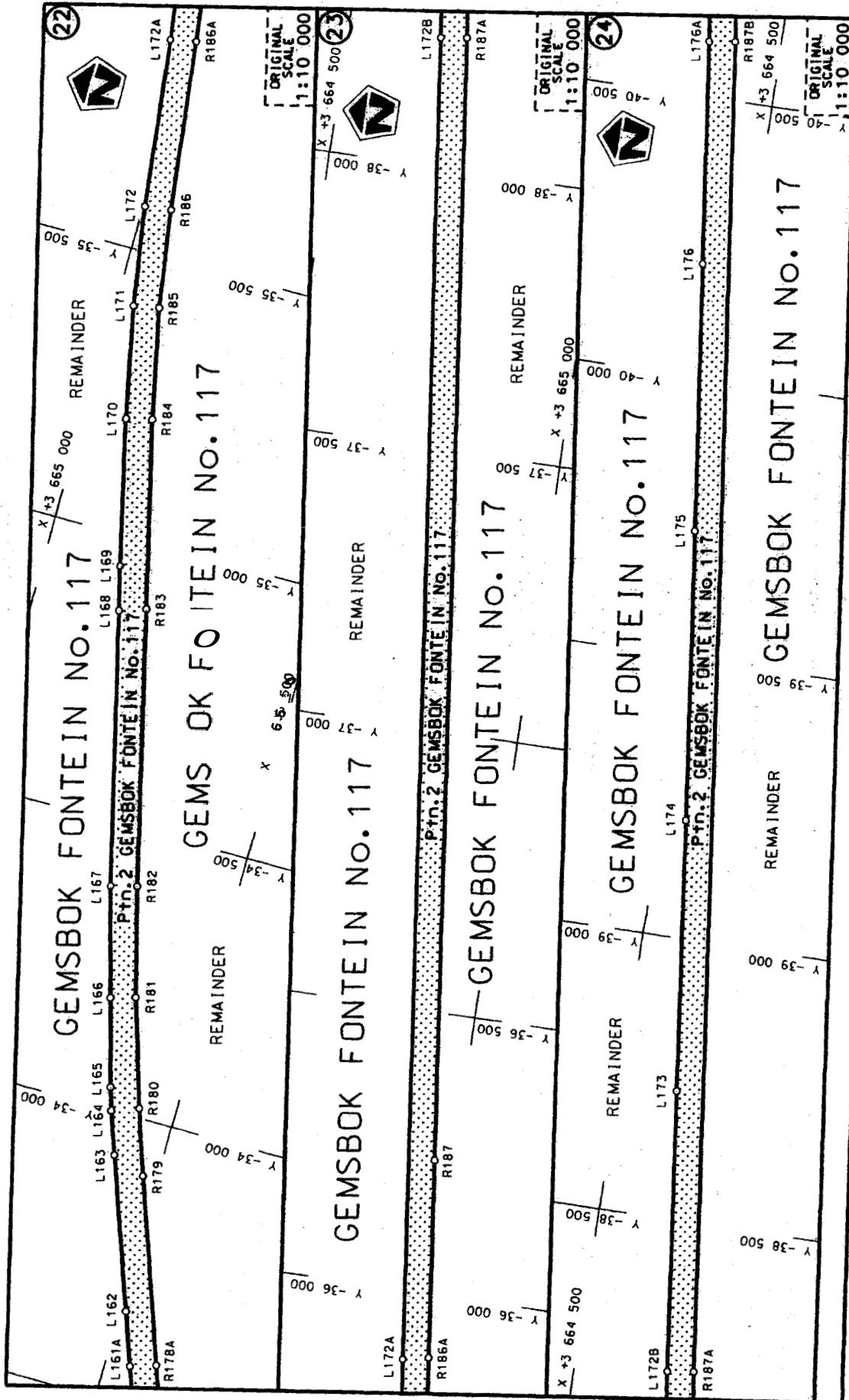
Die Suid Afrikaanse Nasionale Padwagterings Buro	The South African National Roads Agency Limited	<p>presenting the road reserve of a portion of the National Route</p> <p>N/1</p>	5X	Plan P556/05
		<p>Van</p> <p>Sheet 7 of 21</p>		
		<p>of</p> <p>Plan P556/05</p>		
		<p>Section</p>		

0004



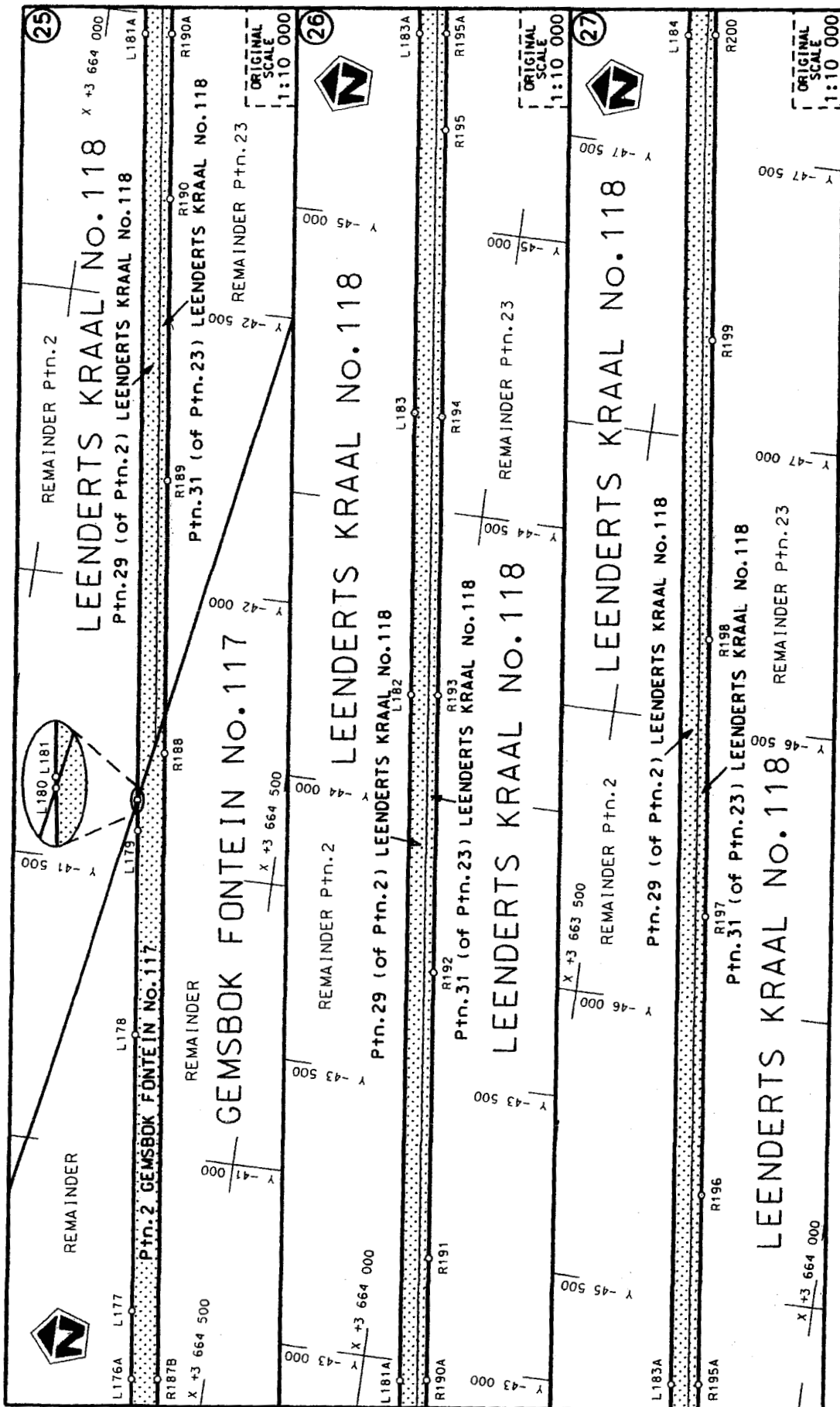


<p>Die Suid Afrikaanse Nasionale Padagentskap Beperk The South African National Roads Agency Limited</p>	<p>Die figuur getoon The figure shown</p>	<p>steeldie podreserwe voor van 'n gedeelte represents the road reserve of a portion van Nasionale Roete of National Route</p>	<p>N1</p>	<p>Section 5X</p>	<p>Plan P556/05</p>	<p>Vel Sheet 8 of 21</p>	<p>D.O.9.A</p>
--	---	--	-----------	-----------------------	-------------------------	------------------------------	----------------



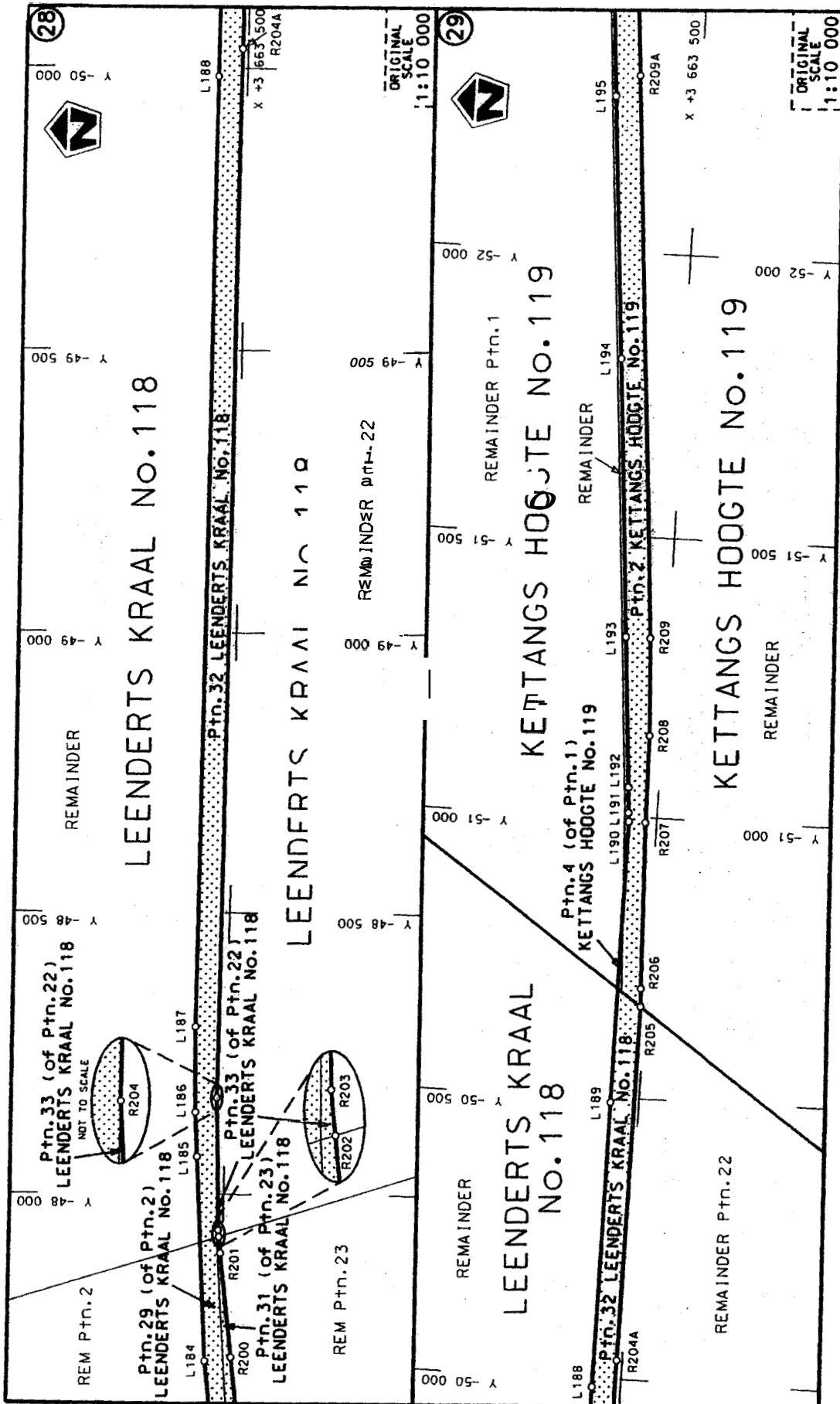
<p>Die Suid Afrikaanse Nasionale Padagentskap Beperk The South African National Roads Agency Limited</p>	<p>Die figuur getoon The figure shown</p>	<p>Die padreserwe voor van 'n gedeelte represents the road reserve of a portion van Nasionale Roete N1 of National Route N1</p> <p>Seksie Section</p>	<p>Vel Sheet</p> <p>9 of</p> <p>21</p>
<p>Plan P556/05</p>		<p>5X</p>	


D.O.9.A



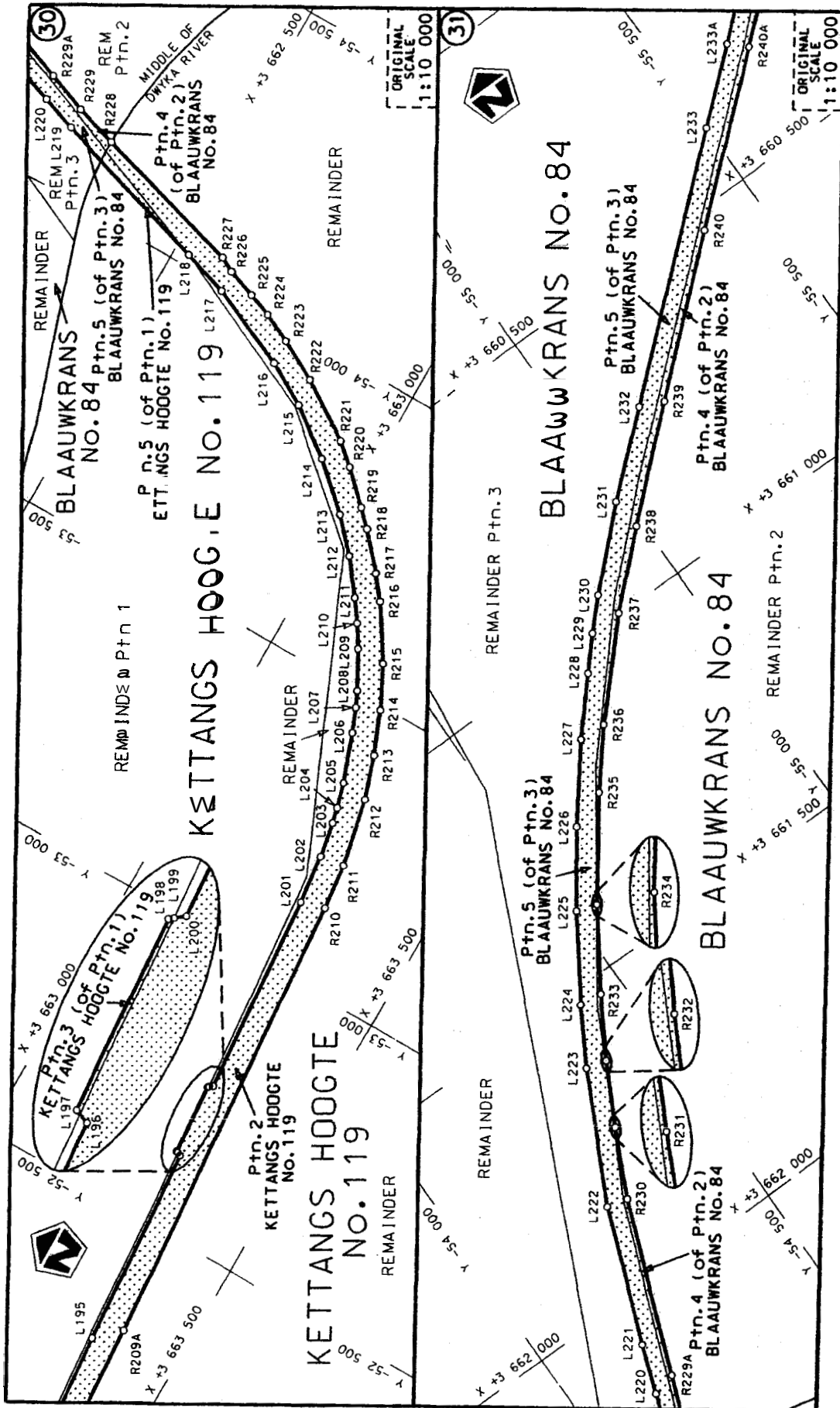
Die Suid Afrikaanse Nasionale Padagentskap Beperk The South African National Roads Agency Limited	Die figuur getoon The figure shown		steldie padreserwe voor van 'n gedeelte represents the road reserve of a portion van Nasionale Roete N1 of National Route	
			N1 Seksie Section	5X
		Vel Sheet	10 of	21
		Plan	P556/05	

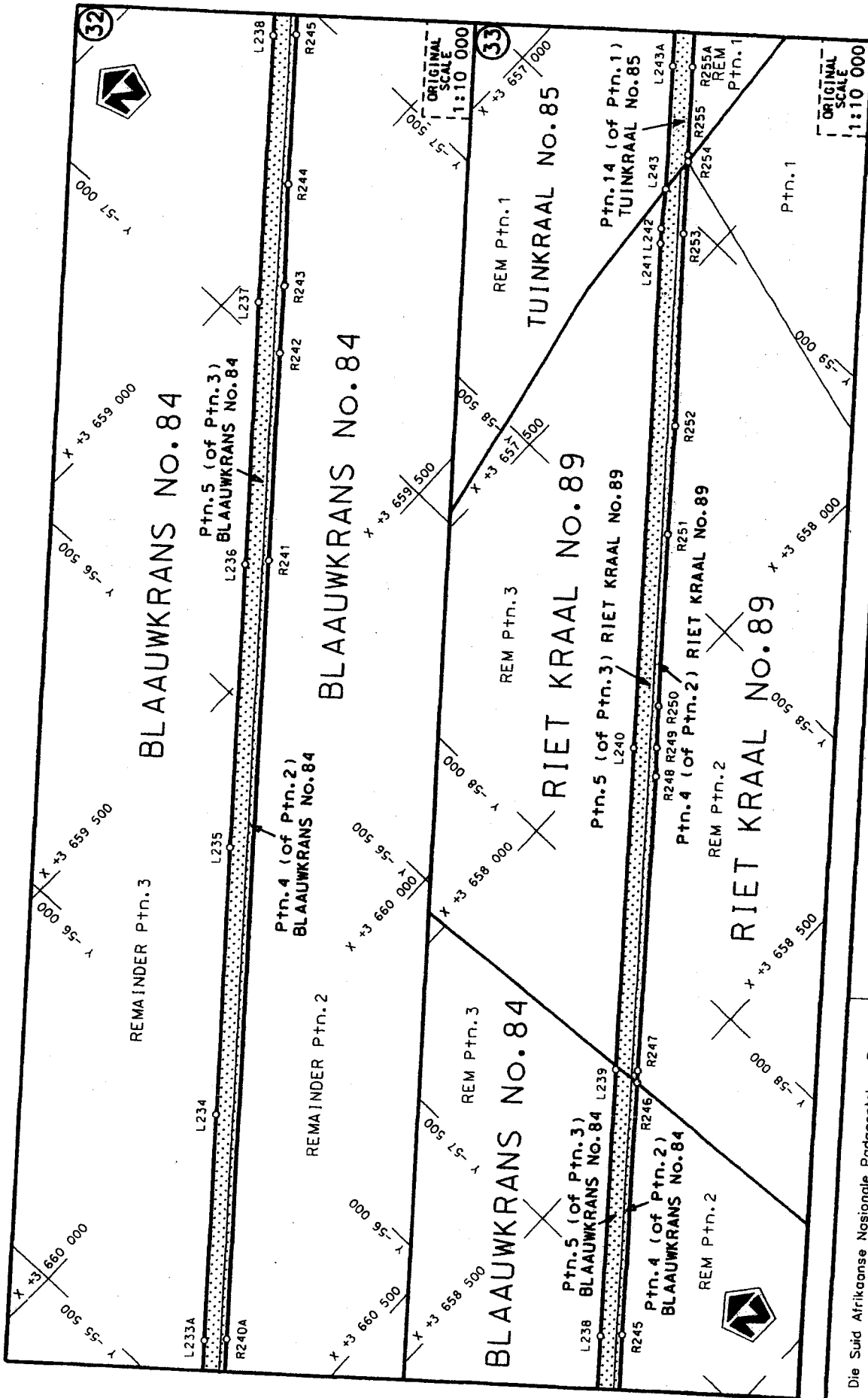
D.O.9.A

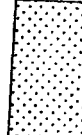


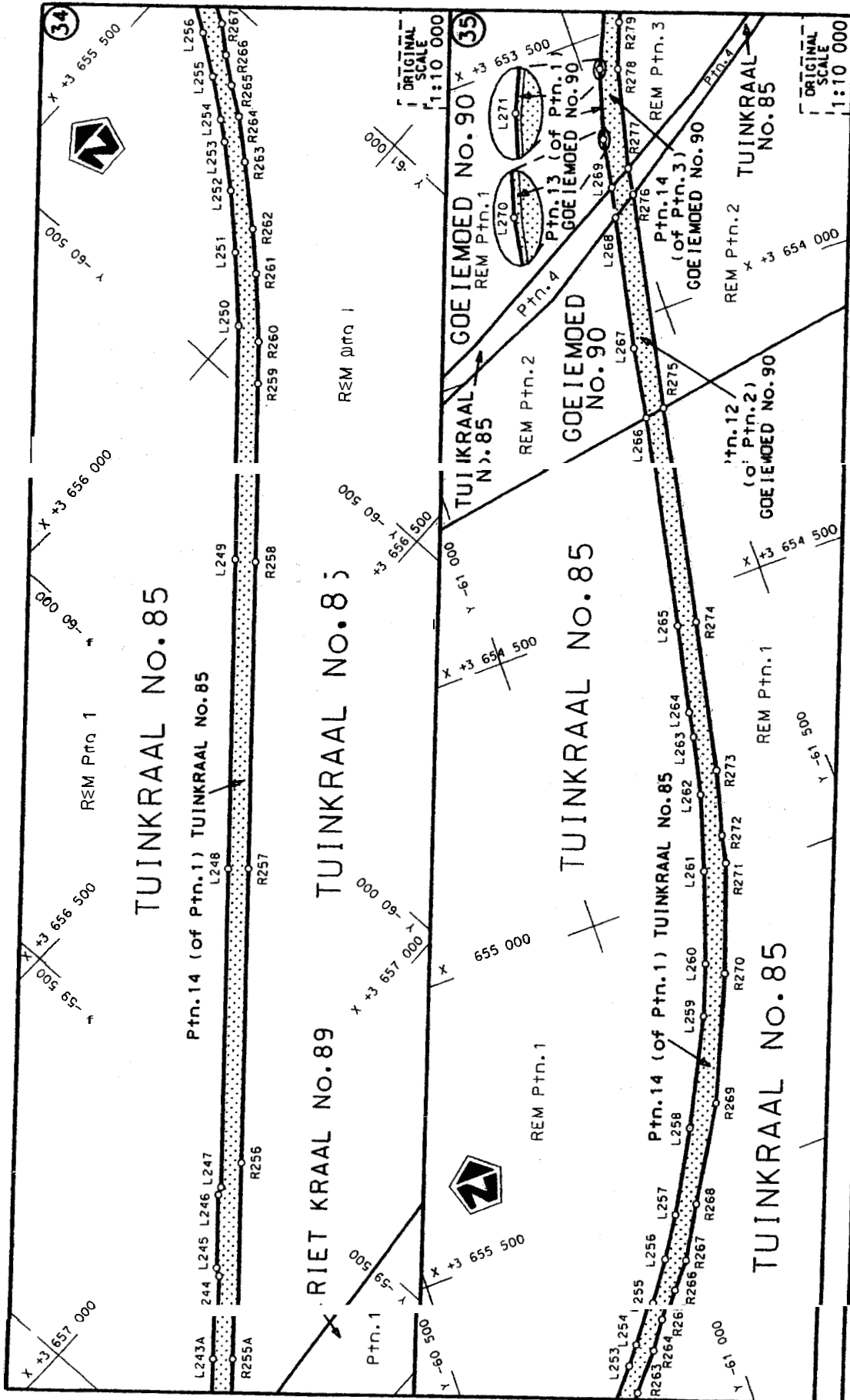
<p>Die Suid Afrikaanse Nasionale Padagentskap Bepark The South African National Roads Agency Limited</p>	<p>Die figuur getoon The figure shown</p> 	<p>steldie podreserwe voor van 'n gedeelte represents the road reserve of a portion van Nasionale Roete N1 Seksie of National Route N1 Section</p>	<p>Vel Sheet 11 van of 21 Plan P556/05</p>
--	---	--	--

D.O.9.A



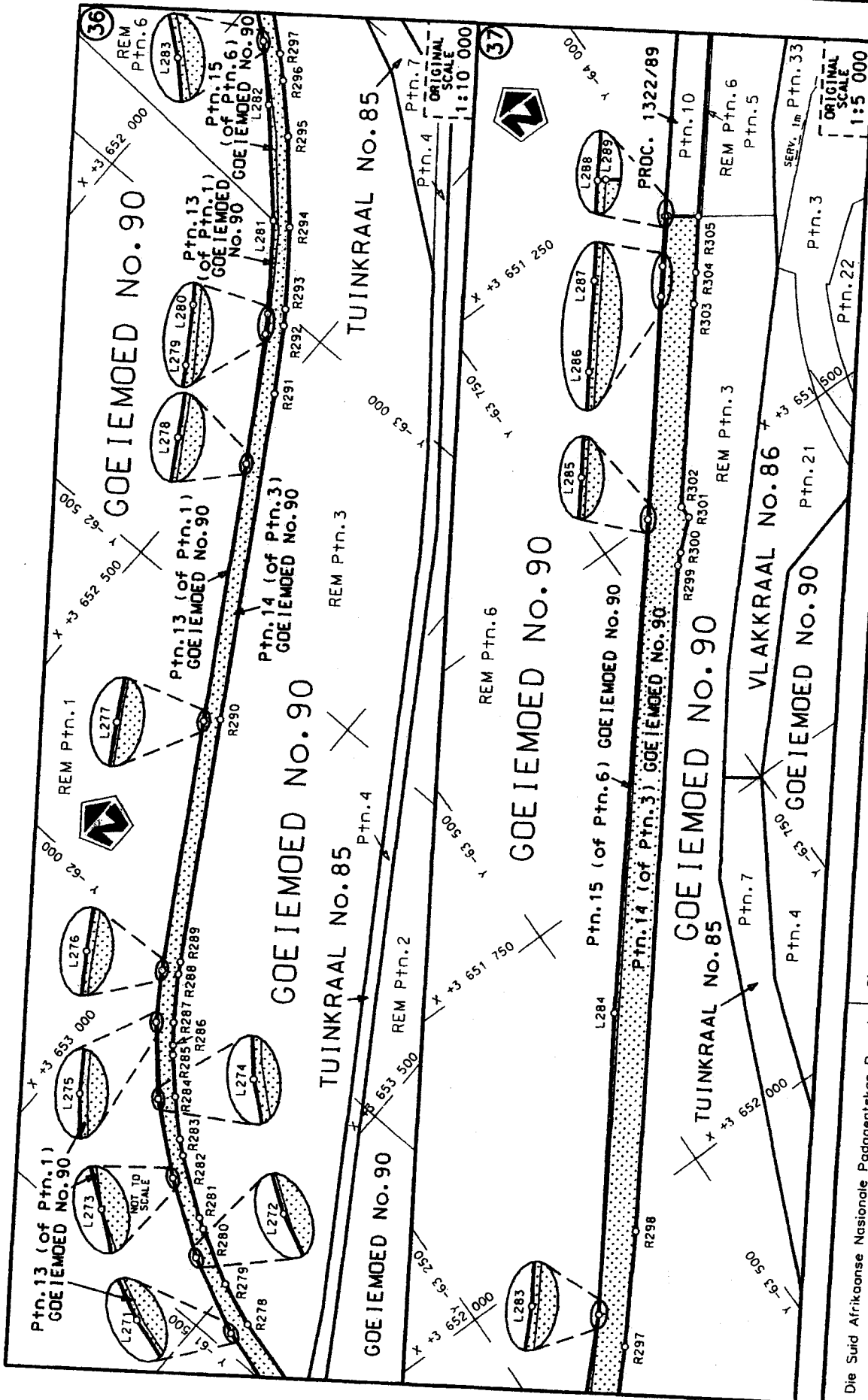


<p>Die Suid Afrikaanse Nasionale Padagentskap Beperk The South African National Roads Agency Limited</p>	<p>Die figuur getoon The figure shown</p>		<p>steldie padreserwe voor van 'n gedeelte represents the road reserve of a portion van Nasionale Roete N1 of National Route</p>	<p>Vel Sheet 13 of 21</p>
<p>* Sektie Section</p>			<p>N1</p>	<p>5X</p>
<p>Plan P556/05</p>			<p>D.O.9.A</p>	



<p>Die Suid Afrikaanse Nasionale Padagentskap Beperk The South African National Roads Agency Limited</p>	<p>Die figuur getoon The figure shown</p>	<p>steldie padreserwe voor van 'n gedeelte represents the road reserve of a portion van Nasionale Roete N1 of National Route</p>	<p>Vel Sheet 14 of 21</p> <p>Plan P556/05</p>
--	---	--	---

D.O.9.A



<p>Die Suid Afrikaanse Nasionale Padagentskap Beperk The South African National Roads Agency Limited</p>	<p>Die figuur getoon The figure shown</p>	<p>stelsel padreserwe voor van 'n gedeelte represents the road reserve of a portion van Nasionale Roete of National Route</p>	<p>Vel Sheet 15 van of 21 Seksie 5X + 6X Plan P556/05</p>
--	---	---	---

D.O.9.A



LINKERKANT/LEFT HAND SIDE				REGTERKANT/RIGHT HAND SIDE				
	Y	X	WG 21°		Y	X		
L1	+13 185,34	+3 674 548,82		R1	+13 190,71	+3 674 570,78		
L2	+13 179,99	+3 674 550,13		R2	+13 152,89	+3 674 579,37		
L3	+13 174,80	+3 674 551,50		R3	+13 149,14	+3 674 580,69		
L4	+13 149,30	+3 674 557,75		R4	+13 126,28	+3 674 583,01		
L5	+13 135,89	+3 674 559,36		R5	+13 108,19	+3 674 579,23		
L6	+13 125,05	+3 674 557,92		R6	+13 093,41	+3 674 568,88		
L7	+13 110,07	+3 674 552,59		R7	+13 086,93	+3 674 563,53		
L8	+13 096,13	+3 674 541,22		R8	+13 079,08	+3 674 555,74		
L9	+12 982,52	+3 674 407,64		R9	+13 068,81	+3 674 544,00		
L10	+12 963,39	+3 674 384,69		R10	+13 057,12	+3 674 529,79		
L11	+12 959,13	+3 674 378,90		R11	+12 967,61	+3 674 424,23		
L12	+12 953,85	+3 674 370,39		R12	+12 958,80	+3 674 412,24		
L13	+12 949,94	+3 674 365,37		R13	+12 954,39	+3 674 405,26		
L14	+12 933,03	+3 674 333,87		R14	+12 945,38	+3 674 387,43		
L15	+12 925,39	+3 674 317,69		R15	+12 890,54	+3 674 274,83		
L16	+12 868,99	+3 674 204,69		R16	+12 858,26	+3 674 210,25		
L17	+12 861,12	+3 674 189,95		R17	+12 850,41	+3 674 195,67		
L18	+12 850,65	+3 674 172,88		R18	+12 840,63	+3 674 179,59		
L19	+12 839,52	+3 674 157,02		R19	+12 829,48	+3 674 163,78		
L20	+12 827,03	+3 674 141,33		R20	+12 817,73	+3 674 149,09		
L21	+12 814,92	+3 674 127,70		R21	+12 804,25	+3 674 133,97		
L22	+12 835,96	+3 674 122,45		R22	+12 801,27	+3 674 131,09		
L23	+12 829,96	+3 674 114,40		R23	+12 782,48	+3 674 135,74		
L24	+12 786,84	+3 674 082,43		R24	+12 722,35	+3 674 082,08		
L25	+12 740,39	+3 674 051,33		R25	+12 596,28	+3 674 048,07		
L26	+12 689,97	+3 674 023,59		R26	+12 416,74	+3 674 020,68		
L27	+12 614,57	+3 674 011,15		R27	+12 264,24	+3 674 006,01		
L28	+12 425,67	+3 673 984,46		R28	+12 020,54	+3 673 999,64		
L29	+12 267,83	+3 673 968,86		R29	+11 934,08	+3 673 987,38		
L30	+12 021,12	+3 673 952,06		R30	+11 719,02	+3 673 952,59		
L31	+11 935,15	+3 673 940,48		R31	+11 702,23	+3 673 964,60		
L32	+11 809,11	+3 673 929,12		R32	+11 411,79	+3 673 925,98		
L33	+11 429,66	+3 673 866,17		R33	+11 096,84	+3 673 879,43		
L34	+10 966,06	+3 673 794,44		R34	+10 906,97	+3 673 837,79		
L35	+10 859,47	+3 673 777,59		R35	+10 736,89	+3 673 790,45		
L36	+10 713,30	+3 673 756,34		R36	+10 709,15	+3 673 786,88		
L37	+10 607,81	+3 673 747,14		R37	+10 605,55	+3 673 777,68		
L38	+10 201,22	+3 673 723,19		R38	+10 335,28	+3 673 761,37		
L39	+9 937,21	+3 673 707,25		R39	+10 198,38	+3 673 756,22		
L40	+9 780,29	+3 673 702,29		R40	+9 936,16	+3 673 740,20		
L41	+9 638,01	+3 673 702,03		R41	+9 779,23	+3 673 734,73		
L42	+9 331,21	+3 673 704,28		R42	+9 332,59	+3 673 735,22		
L43	+9 158,59	+3 673 698,04		R43	+9 156,84	+3 673 728,35		
L44	+8 980,68	+3 673 682,05		R44	+8 982,00	+3 673 712,95		
L45	+8 479,79	+3 673 623,65		R45	+8 472,45	+3 673 653,73		
L46	+7 517,55	+3 673 509,26		R46	+7 964,23	+3 673 594,57		
L47	+7 393,49	+3 673 476,61		R47	+7 512,17	+3 673 541,68		
L48	+7 160,98	+3 673 422,94		R48	+7 380,49	+3 673 523,42		
L49	+6 563,93	+3 673 273,68		R49	+7 138,27	+3 673 468,92		
L50	+6 350,42	+3 673 220,17		R50	+6 555,74	+3 673 344,92		
L51	+5 745,60	+3 673 132,56		R51	+6 462,33	+3 673 298,67		
				Vel	16	Van	21	P556/05
				Sheet		of		

PADRESERWE KOÖRDINATE				ROAD RESERVE CO-ORDINATES				
LINKERKANT/LEFT HAND SIDE				REGTERKANT/RIGHT HAND SIDE				
	Y	X	WG 21°		Y	X		
L52	+5 242,76	+3 673 060,03		R52	+6 360,83	+3 673 277,58		
L53	+5 003,16	+3 673 027,97		R53	+5 452,87	+3 673 204,04		
L54	+4 727,31	+3 672 969,43		R54	+5 338,87	+3 673 190,23		
L55	+4 258,63	+3 672 866,92		R55	+5 225,80	+3 673 168,09		
L56	+3 787,70	+3 672 760,52		R56	+4 216,27	+3 672 928,21		
L57	+3 372,20	+3 672 666,57		R57	+4 006,56	+3 672 878,15		
L58	+2 786,25	+3 672 534,82		R58	+4 011,28	+3 672 853,09		
L59	+2 716,57	+3 672 519,50		R59	+3 779,32	+3 672 801,34		
L60	+2 102,11	+3 672 380,54		R60	+3 541,32	+3 672 748,48		
L61	+1 944,47	+3 672 344,99		R61	+3 536,98	+3 672 765,63		
L62	+1 656,03	+3 672 277,32		R62	+3 417,64	+3 672 737,88		
L63	+1 359,10	+3 672 184,94		R63	+3 363,39	+3 672 725,12		
L64	+1 300,48	+3 672 167,34		R64	+3 246,27	+3 672 701,79		
L65	+686,76	+3 671 972,82		R65	+3 127,95	+3 672 687,19		
L66	+129,41	+3 671 797,17		R66	+2 921,08	+3 672 668,84		
L67	+60,85	+3 671 777,05		R67	+2 759,87	+3 672 647,01		
L68	-274,a3	+3 671 671,45		R68	+2 603,36	+3 672 609,16		
L69	-530,47	+3 671 590,76		R69	+2 247,87	+3 672 502,87		
L70	-1 315,31	+3 671 342,67		R70	+1 732,37	+3 672 349,74		
L71	-1 786,95	+3 671 193,92		R71	+1 733,03	+3 672 347,57		
L72	-2 261,89	+3 671 043,31		R72	+1 712,46	+3 672 341,51		
L73	-2 692,52	+3 670 906,86		R73	+1 711,92	+3 672 343,67		
L74	-3 635,83	+3 670 608,99		R74	+1 587,76	+3 672 307,69		
L75	-3 845,78	+3 670 542,90		R75	+1 417,80	+3 672 262,25		
L76	-4 574,48	+3 670 313,09		R76	+1 424,13	+3 672 240,19		
L77	-5 532,06	+3 670 010,89		R77	+1 342,30	+3 672 216,36		
L78	-5 972,99	+3 669 871,95		R78	+1 337,41	+3 672 243,81		
L79	-6 158,59	+3 669 820,38		R79	+1 159,31	+3 672 199,24		
L80	-6 454,54	+3 669 723,84		R80	+663,04	+3 672 050,67		
L81	-6 833,38	+3 669 602,15		R81	+336,16	+3 671 653,08		
L82	-7 421,77	+3 669 416,49		R82	-386,54	+3 671 737,09		
L83	-8 193,99	+3 669 173,02		R83	-373,73	+3 671 689,51		
L84	-8 276,32	+3 669 148,40		R84	-956,20	+3 671 510,68		
L85	-8 838,93	+3 668 987,38		R85	-971,38	+3 671 557,78		
L86	-9 306,89	+3 668 853,64		RE6	-1 824,03	+3 671 283,66		
L87	-10 261,01	+3 668 580,49		R87	-3 799,76	+3 670 648,97		
L88	-11 237,20	+3 668 301,36		R88	-5 932,96	+3 669 963,62		
L89	-11 695,79	+3 668 170,22		R89	-7 423,22	+3 669 485,02		
L90	-11 936,26	+3 668 106,23		R90	-7 792,19	+3 669 366,59		
L91	-12 816,36	+3 667 968,56		R91	-8 082,71	+3 669 233,71		
L92	-13 195,13	+3 667 906,80		R92	-8 389,49	+3 669 160,03		
L93	-14 132,38	+3 667 754,96		R93	-9 122,91	+3 668 977,15		
L94	-14 767,86	+3 667 652,14		R94	-9 846,30	+3 668 797,04		
L95	-15 251,67	+3 667 559,79		R95	-10 360,55	+3 668 639,40		
L96	-15 755,29	+3 667 463,78		R96	-10 766,17	+3 668 514,95		
L97	-16 301,86	+3 667 360,36		R97	-11 626,47	+3 668 267,10		
L98	-17 052,09	+3 667 217,69		R98	-11 820,15	+3 668 231,99		
L99	-17 458,25	+3 667 134,97		R99	-11 816,10	+3 668 170,68		
L100	-17 971,42	+3 667 036,40		R100	-11 945,71	+3 668 144,96		
L101	-18 355,67	+3 666 962,74		R101	-12 429,84	+3 668 069,97		
L102	-18 449,09	+3 666 943,06		R102	-12 827,44	+3 668 008,71		
				Vel	17	Van	21	P556/05
				Sheet		of		

PADRESERWE KOÖRDINATE				/	ROAD RESERVE CO-ORDINATES			
LINKERKANT/LEFT HAND SIDE					REGTERKANT/RIGHT HAND SIDE			
	Y	X	FIG	21°	Y	X		
L103	-19 489,67	+3 666 694,99		R103	-14 213,97	+3 667 794,16		
L104	-19 933,99	+3 666 589,15		R104	-14 367,50	+3 667 766,73		
L105	-20 042,39	+3 666 568,73		R105	-14 776,11	+3 667 688,74		
L106	-20 122,96	+3 666 559,78		R106	-15 263,33	+3 667 595,88		
L107	-20 230,93	+3 666 556,57		R107	-15 761,89	+3 667 500,37		
L108	-20 824,00	+3 666 563,81		R108	-16 316,60	+3 667 394,61		
L109	-21 352,71	+3 666 570,59		R109	-16 972,02	+3 667 269,20		
L110	-22 764,30	+3 666 589,70		R110	-17 135,14	+3 667 238,22		
L111	-22 864,02	+3 666 592,84		R111	-17 547,31	+3 667 160,17		
L112	-22 964,08	+3 666 597,10		R112	-17 979,85	+3 667 076,44		
L113	-23 483,17	+3 666 623,30		R113	-18 202,50	+3 667 031,41		
L114	-23 684,32	+3 666 643,17		R114	-18 455,41	+3 666 972,34		
L115	-23 802,99	+3 666 663,99		R115	-18 639,52	+3 666 954,04		
L116	-23 917,70	+3 666 690,97		R116	-18 793,42	+3 666 909,46		
L117	-24 167,09	+3 666 757,05		R117	-19 507,23	+3 666 740,29		
L118	-24 230,46	+3 666 767,11		R118	-19 652,44	+3 666 711,71		
L119	-24 253,34	+3 666 769,42		R119	-19 813,03	+3 666 699,42		
L120	-24 347,04	+3 666 772,57		R120	-19 811,67	+3 666 671,32		
L121	-24 429,49	+3 666 764,91		R121	-19 939,51	+3 666 619,05		
L122	-24 543,04	+3 666 740,37		R122	-20 045,14	+3 666 599,15		
L123	-24 923,62	+3 666 619,32		R123	-20 126,50	+3 666 589,65		
L124	-25 099,05	+3 666 562,83		R124	-20 231,16	+3 666 586,10		
L125	-25 215,32	+3 666 535,13		R125	-20 818,68	+3 666 596,00		
L126	-25 221,13	+3 666 533,75		R126	-21 344,98	+3 666 635,04		
L127	-25 282,84	+3 666 522,02		R127	-21 570,64	+3 666 625,62		
L128	-25 309,59	+3 666 517,64		R128	-21 711,64	+3 666 623,26		
L129	-25 385,99	+3 666 507,38		R129	-21 809,70	+3 666 624,60		
L130	-25 484,30	+3 666 501,20		R130	-22 159,12	+3 666 629,02		
L131	-25 992,66	+3 666 494,77		R131	-22 769,27	+3 666 637,30		
L132	-28 236,08	+3 666 470,13		R132	-22 853,63	+3 666 639,90		
L133	-28 333,04	+3 666 467,18		R133	-23 073,44	+3 666 650,15		
L134	-28 389,17	+3 666 463,40		R134	-23 623,81	+3 666 677,65		
L135	-28 469,54	+3 666 456,47		R135	-23 710,97	+3 666 691,19		
L136	-28 904,90	+3 666 412,75		R136	-23 819,84	+3 666 707,81		
L137	-29 172,40	+3 666 385,80		R137	-24 052,42	+3 666 773,79		
L138	-29 265,63	+3 666 377,31		R138	-24 086,89	+3 666 779,71		
L139	-29 473,09	+3 666 368,24		R139	-24 201,84	+3 666 806,80		
L140	-29 917,24	+3 666 353,61		R140	-24 257,09	+3 666 813,19		
L141	-30 035,78	+3 666 349,02		R141	-24 310,23	+3 666 817,59		
L142	-30 104,07	+3 666 343,40		R142	-24 402,42	+3 666 818,03		
L143	-30 218,11	+3 666 326,49		R143	-24 546,96	+3 666 797,03		
L144	-30 560,39	+3 666 258,48		R144	-24 788,31	+3 666 722,50		
L145	-30 694,59	+3 666 235,96		R145	-24 784,71	+3 666 709,93		
L146	-30 776,60	+3 666 236,18		R146	-25 048,34	+3 666 638,37		
L147	-30 905,97	+3 666 257,17		R147	-25 210,13	+3 666 635,59		
L148	-31 003,75	+3 666 274,90		R148	-25 263,64	+3 666 635,29		
L149	-31 074,63	+3 666 284,58		R149	-25 320,43	+3 666 614,91		
L150	-31 189,65	+3 666 305,39		R150	-25 318,57	+3 666 546,73		
L151	-31 369,16	+3 666 314,60		R151	-25 425,83	+3 666 534,53		
L152	-31 376,01	+3 666 314,41		R152	-25 515,21	+3 666 530,11		
L153	-31 550,34	+3 666 279,82		R153	-26 000,72	+3 666 524,71		
					Vel 18	Van 21	P556/05	
					Sheet	of		

LINKERKANT/LEFT HAND SIDE				REGTERKANT/RIGHT HAND SIDE				
	Y	X	WG	21°	Y	X		
L154	-31 734,98	+3 666 205,41		R154	-27 494,22	+3 666 508,44		
L155	-31 773,52	+3 666 202,01		R155	-28 306,30	+3 666 499,41		
L156	-32 095,37	+3 666 084,58		R156	-28 459,86	+3 666 487,97		
L157	-33 118,73	+3 665 711,44		R157	-28 774,97	+3 666 456,03		
L158	-33 197,06	+3 665 682,93		R158	-28 814,27	+3 666 473,63		
L159	-33 271,49	+3 665 650,63		R159	-28 844,43	+3 666 470,18		
L160	-33 271,92	+3 665 650,44		R160	-28 911,57	+3 666 442,10		
L161	-33 330,06	+3 665 630,50		R161	-29 273,44	+3 666 407,16		
L162	-33 661,49	+3 665 510,10		R162	-29 353,06	+3 666 402,52		
L163	-33 924,73	+3 665 414,18		R163	-29 771,73	+3 666 388,24		
L164	-33 999,71	+3 665 386,99		R164	-30 145,51	+3 666 372,41		
L165	-34 039,57	+3 665 374,70		R165	-30 629,52	+3 666 276,25		
L166	-34 194,20	+3 665 330,87		R166	-30 719,46	+3 666 265,40		
L167	-34 387,33	+3 665 276,07		R167	-30 831,76	+3 666 274,65		
L168	-34 866,97	+3 665 155,33		R168	-30 957,65	+3 666 298,02		
L169	-34 944,79	+3 665 135,47		R169	-31 047,57	+3 666 323,55		
L170	-35 201,64	+3 665 073,73		R170	-31 209,65	+3 666 345,85		
L171	-35 400,53	+3 665 031,88		R171	-31 294,65	+3 666 351,67		
L172	-35 578,97	+3 665 001,95		R172	-31 415,47	+3 666 343,13		
L173	-38 728,00	+3 664 604,41		R173	-31 436,61	+3 666 341,28		
L174	-39 211,30	+3 664 543,68		R174	-31 509,86	+3 666 330,06		
L175	-39 726,87	+3 664 478,64		R175	-31 617,63	+3 666 302,81		
L176	-40 203,22	+3 664 418,71		R176	-31 665,23	+3 666 286,58		
L177	-40 719,21	+3 664 353,67		R177	-31 812,81	+3 666 232,93		
L178	-41 203,99	+3 664 292,73		R178	-33 243,26	+3 665 712,78		
L179	-41 563,09	+3 664 247,48		R179	-33 902,23	+3 665 473,24		
L180	-41 616,49	+3 664 239,57		R180	-34 016,77	+3 665 433,43		
L181	-41 618,08	+3 664 239,33		R181	-34 206,43	+3 665 373,49		
L182	-44 170,99	+3 663 917,45		R182	-34 399,24	+3 665 321,45		
L183	-44 666,97	+3 663 854,43		R183	-34 881,76	+3 665 200,80		
L184	-47 702,86	+3 663 471,82		R184	-35 212,55	+3 665 118,47		
L185	-48 066,25	+3 663 450,20		R185	-35 408,78	+3 665 076,02		
L186	-48 144,99	+3 663 445,89		R186	-35 585,13	+3 665 048,76		
L187	-48 297,02	+3 663 442,73		R187	-36 236,69	+3 664 966,42		
L188	-49 985,34	+3 663 447,64		R188	-41 706,07	+3 664 276,83		
L189	-50 491,37	+3 663 448,73		R189	-42 186,59	+3 664 215,98		
L190	-50 991,97	+3 663 449,97		R190	-42 680,94	+3 664 153,86		
L191	-51 007,26	+3 663 448,24		R191	-43 185,18	+3 664 090,23		
L192	-51 052,62	+3 663 445,66		R192	-43 686,67	+3 664 026,88		
L193	-51 320,87	+3 663 423,65		R193	-44 176,08	+3 663 965,18		
L194	-51 812,23	+3 663 385,63		R194	-44 666,27	+3 663 903,47		
L195	-52 276,19	+3 663 347,52		R195	-45 168,01	+3 663 840,12		
L196	-52 631,91	+3 663 319,31		R196	-45 672,12	+3 663 776,64		
L197	-52 635,28	+3 663 310,09		R197	-46 160,00	+3 663 715,03		
L198	-52 760,23	+3 663 300,33		R198	-46 648,21	+3 663 653,48		
L199	-52 762,28	+3 663 302,93		R199	-47 173,84	+3 663 587,20		
L200	-52 766,88	+3 663 308,76		R200	-47 709,73	+3 663 519,67		
L201	-53 127,28	+3 663 280,44		R201	-47 895,48	+3 663 496,38		
L202	-53 215,30	+3 663 269,75		R202	-47 924,55	+3 663 493,08		
L203	-53 276,84	+3 663 257,79		R203	-47 936,16	+3 663 491,76		
L204	-53 304,27	+3 663 251,30		R204	-48 171,32	+3 663 484,00		
				Vel	19	Van	21	P556/05
				Sheet		of		

LINKERKANT/LEFT HAND SIDE				REGTERKANT/RIGHT HAND SIDE				
	Y	X	WG 21°		Y	X		
L205	-53 347,80	+3 663 238,89		R205	-50 663,68	+3 663 491,89		
L206	-53 432,90	+3 663 207,90		R206	-50 696,03	+3 663 490,18		
L207	-53 474,29	+3 663 189,83		R207	-50 991,16	+3 663 479,82		
L208	-53 501,48	+3 663 176,96		R208	-51 145,90	+3 663 477,39		
L209	-53 567,01	+3 663 140,48		R209	-51 320,38	+3 663 467,49		
L210	-53 605,41	+3 663 116,31		R210	-51 139,42	+3 663 323,01		
L211	-53 642,34	+3 663 090,29		R211	-53 221,60	+3 663 313,10		
L212	-53 701,72	+3 663 043,42		R212	-53 340,83	+3 663 287,16		
L213	-53 756,47	+3 662 992,21		R213	-53 417,18	+3 663 260,88		
L214	-53 826,49	+3 662 915,36		R214	-53 491,74	+3 663 229,43		
L215	-53 888,13	+3 662 830,88		R215	-53 565,65	+3 663 191,77		
L216	-53 930,91	+3 662 755,35		R216	-53 658,49	+3 663 131,87		
L217	-53 994,09	+3 662 609,30		R217	-53 697,94	+3 663 099,97		
L218	-54 019,58	+3 662 526,32		R218	-53 758,35	+3 663 047,07		
L219	-54 110,02	+3 662 231,90		R219	-53 786,06	+3 663 019,32		
L220	-54 131,97	+3 662 168,06		R220	-53 837,96	+3 662 965,43		
L221	-54 162,18	+3 662 081,72		R221	-53 870,19	+3 662 927,91		
L222	-54 251,79	+3 661 845,89		R222	-53 937,52	+3 662 825,83		
L223	-54 361,56	+3 661 624,10		R223	-53 975,09	+3 662 753,81		
L224	-54 418,16	+3 661 526,10		R224	-53 999,51	+3 662 701,90		
L225	-54 507,63	+3 661 385,54		R225	-54 014,68	+3 662 659,39		
L226	-54 594,07	+3 661 263,05		R226	-54 032,03	+3 662 606,84		
L227	-54 690,08	+3 661 140,88		R227	-54 045,55	+3 662 580,82		
L228	-54 767,57	+3 661 051,34		R228	-54 124,28	+3 662 307,64		
L229	-54 815,41	+3 660 998,37		R229	-54 146,36	+3 662 231,03		
L230	-54 862,85	+3 660 949,30		R230	-54 287,89	+3 661 855,15		
L231	-54 984,36	+3 660 833,07		R231	-54 342,93	+3 661 739,56		
L232	-55 115,11	+3 660 718,67		R232	-54 398,39	+3 661 634,12		
L233	-55 498,06	+3 660 387,92		R233	-54 458,08	+3 661 531,39		
L234	-55 927,33	+3 660 017,11		R234	-54 544,31	+3 661 397,57		
L235	-56 296,21	+3 659 697,68		R235	-54 661,60	+3 661 237,20		
L236	-56 688,86	+3 659 358,85		R236	-54 738,54	+3 661 142,96		
L237	-57 051,48	+3 659 045,31		R237	-54 874,70	+3 660 996,78		
L238	-57 420,34	+3 658 727,37		R238	-54 988,50	+3 660 888,66		
L239	-57 787,71	+3 658 409,69		R239	-55 157,94	+3 660 736,85		
L240	-58 233,02	+3 658 025,43		R240	-55 391,23	+3 660 533,51		
L241	-58 930,77	+3 657 421,27		R241	-56 722,62	+3 659 383,60		
L242	-58 951,26	+3 657 403,58		R242	-57 010,28	+3 659 135,88		
L243	-59 009,46	+3 657 359,47		R243	-57 104,32	+3 659 057,37		
L244	-59 292,41	+3 657 115,61		R244	-57 243,51	+3 658 933,78		
L245	-59 300,20	+3 657 102,45		R245	-57 449,53	+3 658 755,45		
L246	-59 398,42	+3 657 017,62		R246	-57 797,04	+3 658 455,29		
L247	-59 412,04	+3 657 012,22		R247	-57 813,57	+3 658 441,01		
L248	-59 841,84	+3 656 640,86		R248	-58 223,48	+3 658 090,81		
L249	-60 260,50	+3 656 278,92		R249	-58 262,11	+3 658 055,77		
L250	-60 581,25	+3 656 001,73		R250	-58 318,77	+3 658 004,68		
L251	-60 674,50	+3 655 909,99		R251	-58 557,09	+3 657 798,53		
L252	-60 750,79	+3 655 829,55		R252	-58 709,44	+3 657 670,46		
L253	-60 807,12	+3 655 763,50		R253	-58 972,72	+3 657 439,37		
L254	-60 831,92	+3 655 731,90		R254	-59 073,12	+3 657 353,65		
L255	-60 879,00	+3 655 669,38		R255	-59 081,92	+3 657 344,94		
				Vel	20	Van	21	P556/05
				Sheet		of		

LINKERKANT/LEFT HAND SIDE				REGTERKANT/RIGHT HAND SIDE			
	Y	X	WG	21°	Y	X	
L256	-60 924,88	+3 655 603,63		R256	-59 468,65	+3 657 010,97	
L257	-60 968,96	+3 655 535,62		R257	-59 866,34	+3 656 667,79	
L258	-61 045,02	+3 655 399,14		R258	-60 281,55	+3 656 308,84	
L259	-61 134,90	+3 655 220,65		R259	-60 527,57	+3 656 096,55	
L260	-61 169,59	+3 655 133,58		R260	-60 583,51	+3 656 047,93	
L261	-61 222,65	+3 654 976,56		R261	-60 671,01	+3 655 963,27	
L262	-61 262,13	+3 654 845,45		R262	-60 726,32	+3 655 905,22	
L263	-61 284,91	+3 654 743,58		R263	-60 805,60	+3 655 814,43	
L264	-61 291,96	+3 654 699,92		R264	-60 857,71	+3 655 752,86	
L265	-61 324,17	+3 654 546,61		R265	-60 890,37	+3 655 705,34	
L266	-61 400,40	+3 654 171,61		R266	-60 923,57	+3 655 661,48	
L267	-61 420,72	+3 654 047,81		R267	-60 960,03	+3 655 618,74	
L268	-61 468,43	+3 653 816,75		R268	-61 010,99	+3 655 530,45	
L269	-61 480,00	+3 653 763,79		R269	-61 104,96	+3 655 373,96	
L270	-61 494,43	+3 653 678,42		R270	-61 197,06	+3 655 161,91	
L271	-61 530,51	+3 653 558,51		R271	-61 265,13	+3 654 976,12	
L272	-61 593,23	+3 653 419,59		R272	-61 274,91	+3 654 926,95	
L273	-61 675,26	+3 653 291,53		R273	-61 303,99	+3 654 814,39	
L274	-61 766,78	+3 653 176,16		R274	-61 357,92	+3 654 551,86	
L275	-61 870,47	+3 653 082,41		R275	-61 436,10	+3 654 166,21	
L276	-61 948,12	+3 653 028,61		R276	-61 512,48	+3 653 788,77	
L277	-62 341,76	+3 652 789,27		R277	-61 519,71	+3 653 741,96	
L278	-62 745,62	+3 652 542,18		R278	-61 561,53	+3 653 569,73	
L279	-62 947,11	+3 652 414,35		R279	-61 591,66	+3 653 491,86	
L280	-62 977,95	+3 652 393,81		R280	-61 640,46	+3 653 394,68	
L281	-63 112,53	+3 652 290,80		R281	-61 651,41	+3 653 376,15	
L282	-63 264,55	+3 652 146,88		R282	-61 718,47	+3 653 278,81	
L283	-63 346,07	+3 652 063,78		R283	-61 737,15	+3 653 255,48	
L284	-63 53-5/77	+3 651 847,59		R284	-61 789,66	+3 653 197,47	
L285	-63 799,65	+3 651 498,07		R285	-61 844,88	+3 653 144,92	
L286	-63 926,35	+3 651 339,74		R286	-61 858,68	+3 653 133,08	
L287	-63 943,66	+3 651 318,10		R287	-61 890,33	+3 653 107,32	
L288	-63 971,93	+3 651 282,50		R288	-61 962,59	+3 653 056,01	
L289	-63 974,18	+3 651 283,73		R289	-61 981,23	+3 653 044,41	
C1	+13 180,38	+3 674 561,47		R290	-62 363,48	+3 652 810,74	
c2	+13 147,45	+3 674 566,75		R291	-62 874,71	+3 652 498,07	
c3	+13 131,17	+3 674 567,60		R292	-62 979,89	+3 652 429,48	
c4	+13 133,88	+3 674 572,99		R293	-63 004,27	+3 652 412,29	
c5	+13 145,29	+3 674 572,52		R294	-63 122,30	+3 652 320,32	
C6	+13 126,43	+3 674 572,15		R295	-63 244,30	+3 652 210,42	
C7	+13 122,23	+3 674 567,04		R296	-63 315,23	+3 652 137,87	
C8	+13 115,42	+3 674 569,51		R297	-63 348,75	+3 652 101,66	
C9	+13 113,00	+3 674 563,62		R298	-63 416,81	+3 652 021,58	
C10	+13 089,11	+3 674 546,25		R299	-63 797,86	+3 651 547,73	
C11	+13 039,98	+3 674 493,01		R300	-63 806,38	+3 651 539,73	
C12	+13 085,62	+3 674 550,18		R301	-63 831,04	+3 651 518,10	
C13	+13 107,55	+3 674 566,74		R302	-63 830,88	+3 651 506,63	
C14	+13 032,00	+3 674 483,58		R303	-63 946,79	+3 651 362,94	
C15	+12 983,19	+3 674 425,31		R304	-63 964,92	+3 651 340,42	
C16	+12 976,31	+3 674 414,72		R305	-63 996,66	+3 651 300,50	
C17	+12 961,10	+3 674 397,70					

Vel 21 Van 21 P556/05  
Sheet of