

No. 728

28 July 2006

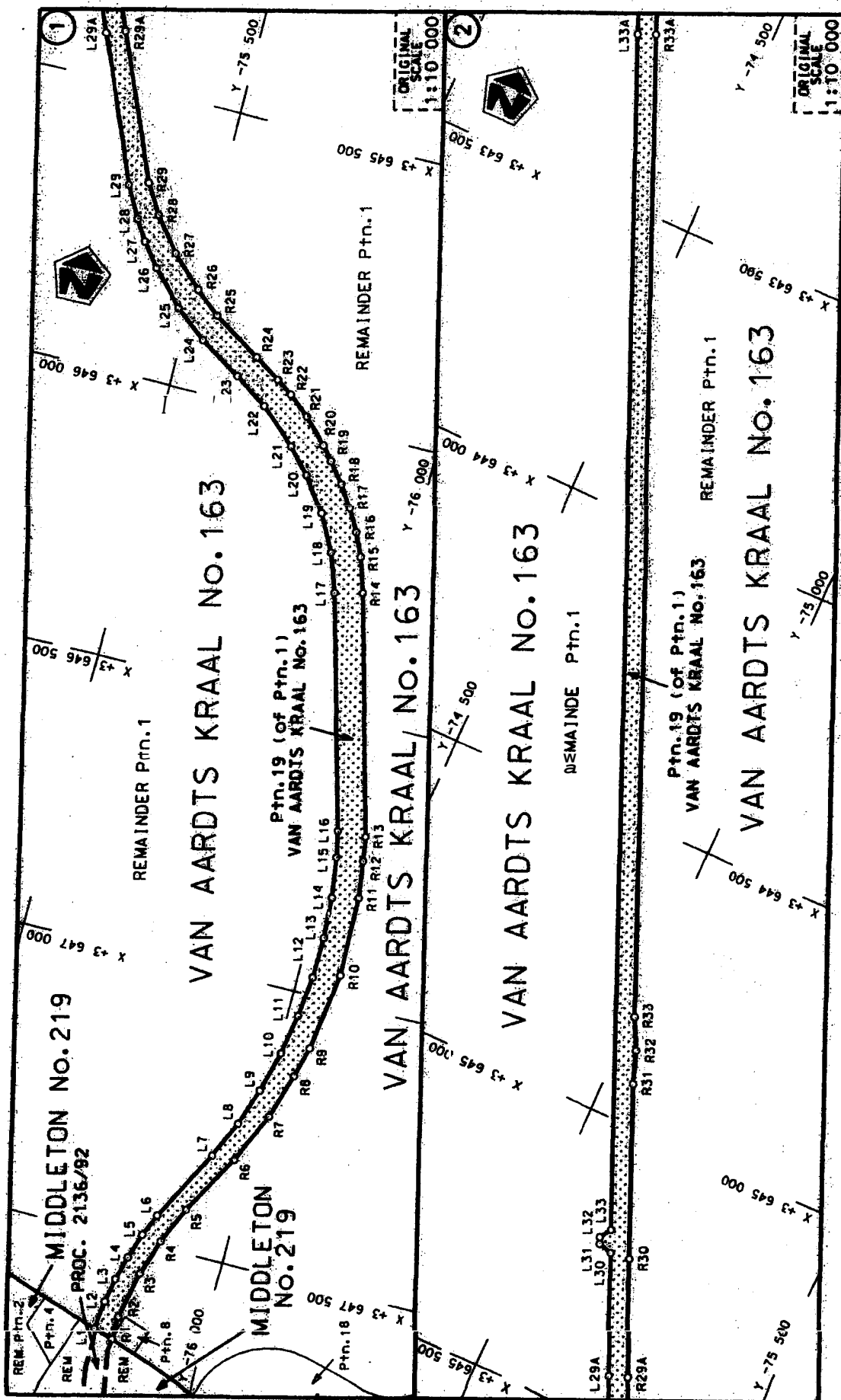
THE SOUTH AFRICAN NATIONAL ROAD AGENCY LIMITED

AMENDMENT OF DECLARATION No. 2136 OF 1992 AND DECLARATION OF NATIONAL ROAD: NATIONAL ROUTE 10, SECTION 2: MIDDLETON - GREAT FISH RIVER: PROVINCE OF EASTERN CAPE

By virtue of section 40 (1)(b) of the South African National Roads Agency Limited and the National Roads Act, 1998 (Act No. 7 of 1998), I hereby amend Declaration No. 2136 of 1992, Schedule paragraph (1), to exclude section 2 of the N10, being the section from the common boundary of the farms Middleton No. 219 and Van Aardts Kraal No. 163 up to the Great Fish River also the common boundary of the Farm Roodewal No. 87 and the Farm No. 257, and by virtue of section 40(1)(a) of the said Act, I hereby declare the route, as indicated on the subjoined Plan P557/05, sheets 1 to 7, as a National Road.

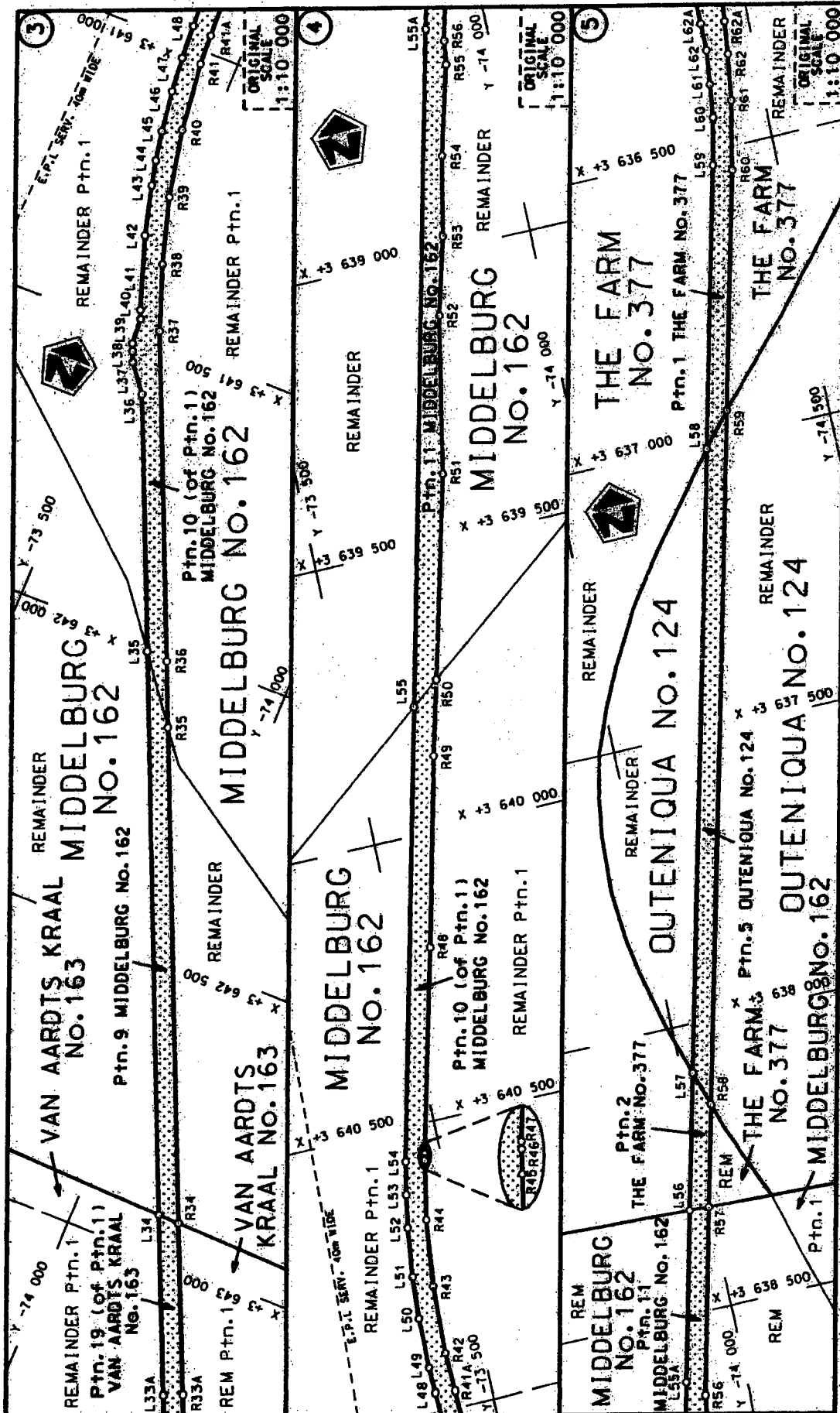


MINISTER OF TRANSPORT

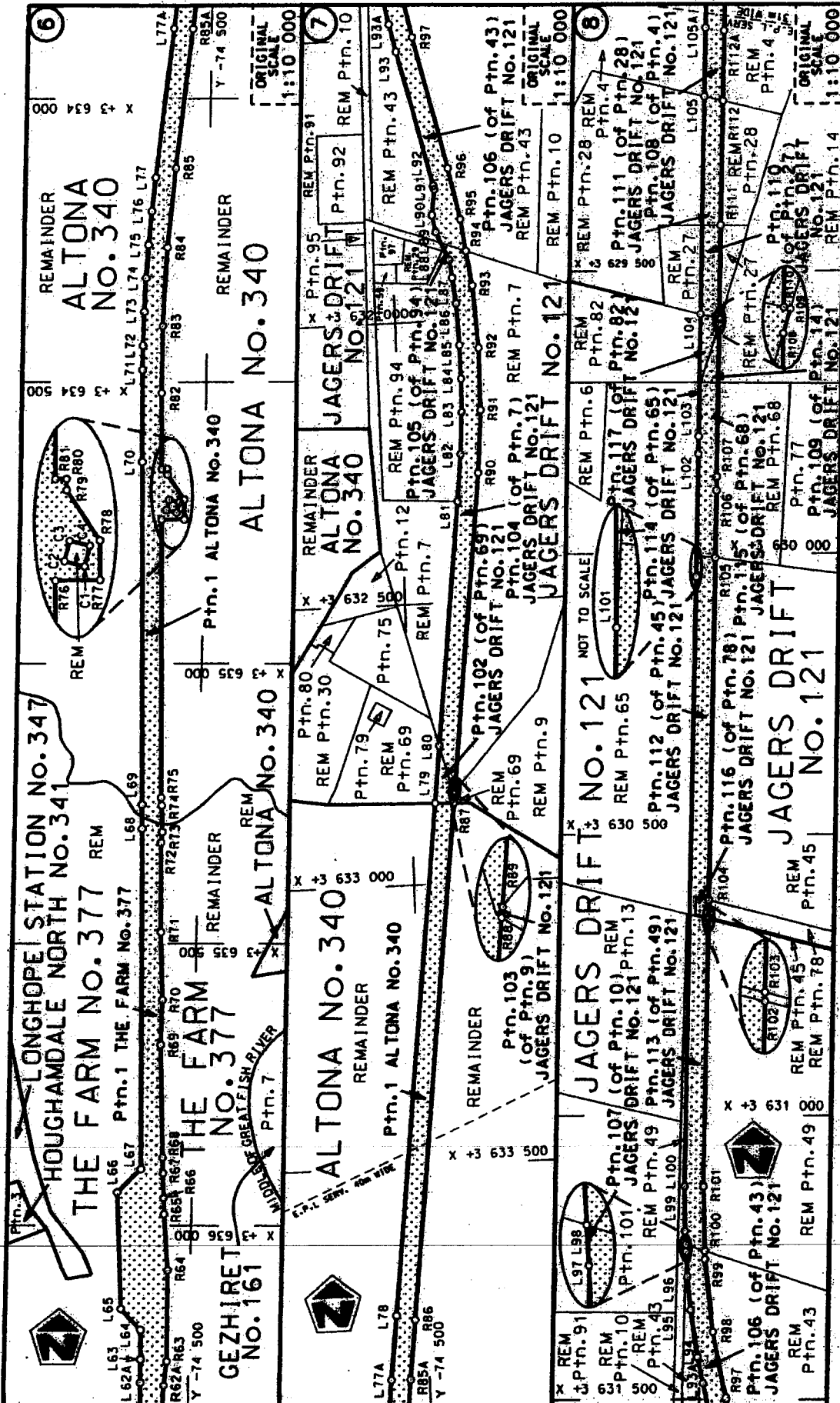


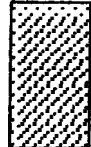
<p>Die Suid-Afrikaanse Nasionale Padwysingskaps Owerheid The South African National Roads Agency Limited</p>	<p>Verkeerstoel Sheet 1 of 7</p>	<p>Die Suid-Afrikaanse Nasionale Padwysingskaps Owerheid The South African National Roads Agency Limited</p>	<p>Die Suid-Afrikaanse Nasionale Padwysingskaps Owerheid The South African National Roads Agency Limited</p>	<p>Die Suid-Afrikaanse Nasionale Padwysingskaps Owerheid The South African National Roads Agency Limited</p>
<p>Die Suid-Afrikaanse Nasionale Padwysingskaps Owerheid The South African National Roads Agency Limited</p>	<p>Die Suid-Afrikaanse Nasionale Padwysingskaps Owerheid The South African National Roads Agency Limited</p>	<p>Die Suid-Afrikaanse Nasionale Padwysingskaps Owerheid The South African National Roads Agency Limited</p>	<p>Die Suid-Afrikaanse Nasionale Padwysingskaps Owerheid The South African National Roads Agency Limited</p>	<p>Plan P557/05</p>

D.O.9.A

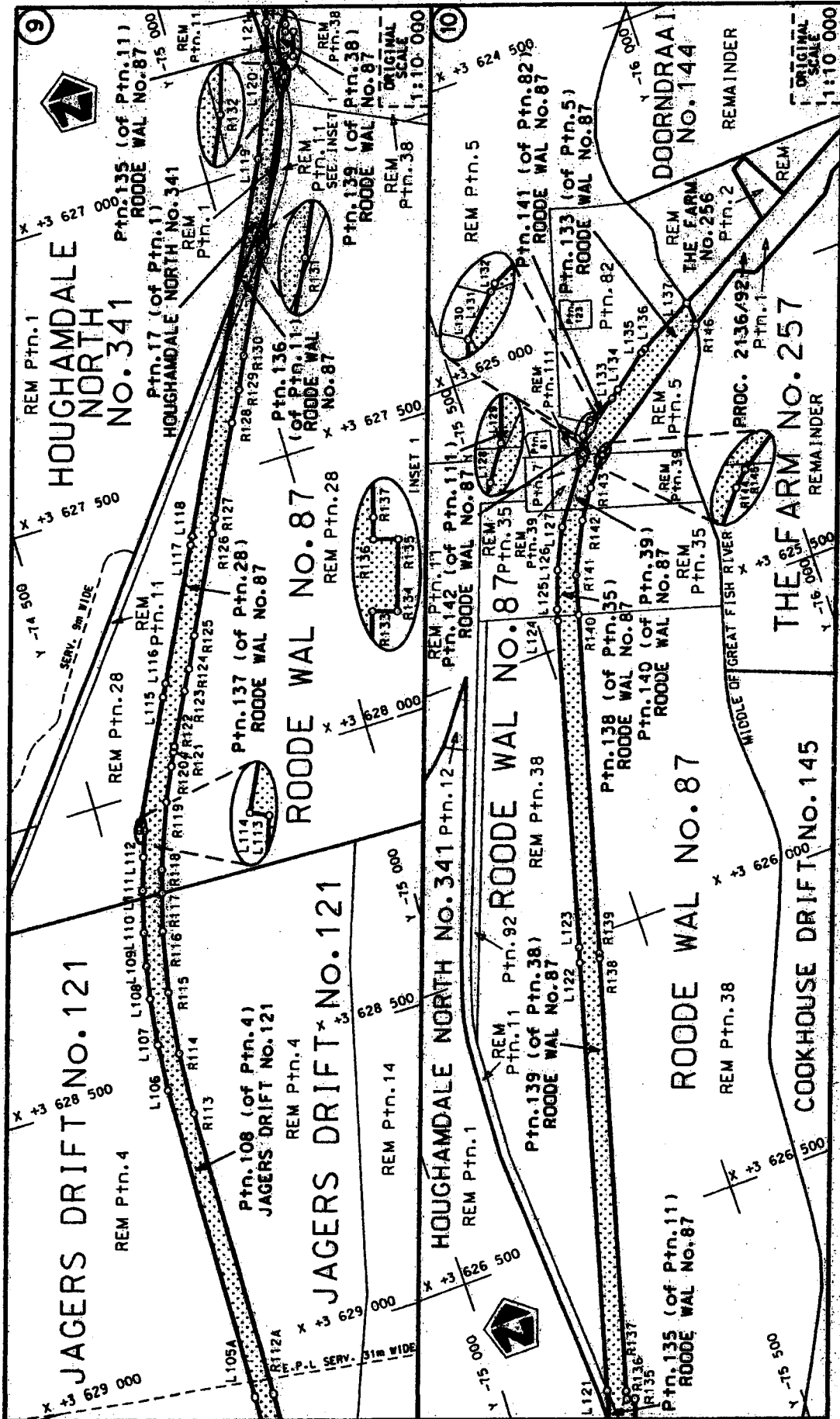


<p>Die Suid Afrikaanse Nasionale Padagentskap Beperk The South African National Roads Agency Limited</p>	<p>Die "gaur getoon Tbri laure shown</p>	<p>sterial paareserwe voo van n gedraite represents the road reserve of a portion van Nasionale Roete N10 Seksie Section 2</p>	<p>Vel Sheet 2 van 7 Plan P557/05</p>
--	--	--	---



Die Suid Afrikaanse Nasionale Padagentskap Bepark The South African National Roads Agency Limited	Die figuur getoon	 The figure shown	steldie padreserwe voor van 'n gedeelte	Vel	van
			represents the road reserve of a portion	Sheet	3
			van Nasionale Roete	N10	Seksie
			of National Route		Section
				2	Plan
					P557/05

D.O.9.A



<p>Die Suid Afrikaanse Nasionale Padagentskap Bepark The South African National Roads Agency Limited</p>	<p>Die figuur getoon The figure shown</p>	<p>stelt die padreserwe voor van 'n gedeelte represents the road reserve of a portion van Nasionale Roete of National Route</p>	<p>Vel Sheet 4 of 7</p> <p>Plan P557/05</p>
--	---	---	---

D.O.G.A

PADRESERWE KOÖRDINATE				ROAD RESERVE CO-ORDINATES			
LINKERKANT/LEFT HAND SIDE				REGTERKANT/RIGHT HAND SIDE			
	Y	X	WG 25°		Y	X	
L1	-75 807,63	+3 647 669,59		R1	-75 839,98	+3 647 680,83	
L2	-75 813,03	+3 647 618,21		R2	-75 843,64	+3 647 638,91	
L3	-75 820,77	+3 647 574,83		R3	-75 859,82	+3 647 554,76	
L4	-75 831,48	+3 647 532,15		R4	-75 881,25	+3 647 489,97	
L5	-75 846,16	+3 647 487,26		R5	-75 912,09	+3 647 424,37	
L6	-75 863,45	+3 647 447,31		R6	-75 974,12	+3 647 315,99	
L7	-75 933,08	+3 647 318,68		R7	-76 014,45	+3 647 226,33	
L8	-75 963,15	+3 647 251,86		R8	-76 039,78	+3 647 146,59	
L9	-75 986,70	+3 647 185,96		R9	-76 054,19	+3 647 090,75	
L10	-76 006,22	+3 647 112,39		R10	-76 073,27	+3 646 952,62	
L11	-76 019,10	+3 647 040,43		R11	-76 069,38	+3 646 810,11	
L12	-76 026,12	+3 646 967,50		R12	-76 060,13	+3 646 744,05	
L13	-76 027,21	+3 646 894,33		R13	-76 052,32	+3 646 700,41	
t14	-76 022,34	+3 646 821,04		R14	-75 933,36	+3 646 276,72	
t15	-76 011,50	+3 646 748,88		R15	-75 912,49	+3 646 214,68	
t16	-76 000,85	+3 646 701,89		R16	-75 893,24	+3 646 173,37	
L17	-75 884,05	+3 646 288,32		R17	-75 871,33	+3 646 133,71	
L18	-75 858,79	+3 646 219,57		R18	-75 846,63	+3 646 095,15	
L19	-75 824,78	+3 646 154,84		R19	-75 818,29	+3 646 059,24	
t20	-75 782,40	+3 646 094,72		R20	-75 798,24	+3 646 035,88	
L21	-75 742,54	+3 646 051,86		R21	-75 755,78	+3 645 994,01	
L22	-75 676,49	+3 645 994,19		R22	-75 717,76	+3 645 962,33	
L23	-75 615,53	+3 645 954,16		R23	-75 688,33	+3 645 942,43	
L24	-75 538,17	+3 645 907,19		R24	-75 641,15	+3 645 912,80	
L25	-75 480,75	+3 645 862,23		R25	-75 552,25	+3 645 858,19	
L26	-75 422,31	+3 645 803,52		R26	-75 506,34	+3 645 822,39	
L27	-75 390,43	+3 645 762,56		R27	-75 449,87	+3 645 769,01	
L28	-75 367,84	+3 645 726,81		R28	-75 402,31	+3 645 711,20	
L29	-75 336,45	+3 645 671,43		R29	-75 370,16	+3 645 659,70	
L30	-75 140,34	+3 645 219,47		R30	-75 175,28	+3 645 215,43	
L31	-75 115,62	+3 645 212,86		R31	-75 051,19	+3 644 930,11	
L32	-75 110,72	+3 645 202,15		R32	-75 031,01	+3 644 873,46	
L33	-75 123,99	+3 645 182,09		R33	-75 003,33	+3 644 820,08	
L34	-74 144,24	+3 642 928,67		R34	-74 181,33	+3 642 929,90	
L35	-73 746,70	+3 642 014,32		R35	-73 831,60	+3 642 125,71	
L36	-73 565,03	+3 641 596,48		R36	-73 784,89	+3 642 018,29	
L37	-73 528,39	+3 641 549,84		R37	-73 551,73	+3 641 482,15	
L38	-73 520,74	+3 641 532,26		R38	-73 511,03	+3 641 370,90	
L39	-73 515,07	+3 641 519,23		R39	-73 477,05	+3 641 256,67	
L40	-73 512,38	+3 641 474,07		R40	-73 453,29	+3 641 140,69	
L41	-73 505,80	+3 641 459,56		R41	-73 438,64	+3 641 022,72	
L42	-73 463,10	+3 641 334,40		R42	-73 433,30	+3 640 904,21	
L43	-73 440,69	+3 641 249,40		R43	-73 437,31	+3 640 785,15	
L44	-73 431,05	+3 641 206,44		R44	-73 450,58	+3 640 667,40	
L45	-73 421,58	+3 641 155,87		R45	-73 470,43	+3 640 564,61	
L46	-73 410,93	+3 641 084,12		R46	-73 472,50	+3 640 553,93	
L47	-73 404,89	+3 641 024,58		R47	-73 473,14	+3 640 550,59	
L48	-73 400,87	+3 640 966,28		R48	-73 558,63	+3 640 200,87	
L49	-73 399,51	+3 640 922,25		R49	-73 636,61	+3 639 869,93	
L50	-73 400,51	+3 640 834,31		R50	-73 669,74	+3 639 738,73	
L51	-73 405,43	+3 640 760,06		R51	-73 759,06	+3 639 385,10	

Vel: 5 Van 7 P557/05
Sheet of

3333333333

PADRESERWE KOÖRDINATE				/	ROAD RESERVE CO-ORDINATES			
LINKERKANT/LEFT HAND SIDE					REGTERKANT/RIGHT HAND SIDE			
	Y	X	WG 25°		Y	X		
L52	-73 415,67	+3 640 673,73		R52	-73 812,47	+3 639 110,46		
L53	-73 425,20	+3 640 616,18		R53	-73 848,47	+3 638 975,11		
L54	-73 436,69	+3 640 559,41		R54	-73 876,78	+3 638 837,50		
L55	-73 621,01	+3 639 776,80		R55	-73 917,37	+3 638 682,69		
L56	-73 963,97	+3 638 320,68		R56	-73 922,65	+3 638 642,84		
L57	-74 019,23	+3 638 085,64		R57	-73 998,20	+3 638 322,18		
L58	-74 272,23	+3 637 011,81		R58	-74 039,37	+3 638 147,49		
L59	-74 386,85	+3 636 524,42		R59	-74 321,01	+3 636 952,14		
L60	-74 403,82	+3 636 444,02		R60	-74 418,02	+3 636 540,43		
L61	-74 410,38	+3 636 385,76		R61	-74 441,42	+3 636 421,59		
L62	-74 416,04	+3 636 326,52		R62	-74 451,72	+3 636 341,45		
L63	-74 415,45	+3 636 237,68		R63	-74 461,55	+3 636 240,80		
L64	-74 414,57	+3 636 184,92		R64	-74 460,15	+3 636 079,44		
L65	-74 379,17	+3 636 147,59		R65	-74 451,77	+3 635 979,71		
L66	-74 368,90	+3 635 941,06		R66	-74 450,52	+3 635 951,15		
L67	-74 409,81	+3 635 900,18		R67	-74 448,58	+3 635 907,02		
L68	-74 400,47	+3 635 294,46		R68	-74 447,39	+3 635 879,81		
L69	-74 399,43	+3 635 251,83		R69	-74 440,43	+3 635 680,20		
L70	-74 388,89	+3 634 642,02		R70	-74 441,66	+3 635 600,27		
L71	-74 386,93	+3 634 478,58		R71	-74 436,63	+3 635 479,59		
L72	-74 386,87	+3 634 435,08		R72	-74 433,97	+3 635 319,61		
L73	-74 387,98	+3 634 375,05		R73	-74 435,70	+3 635 300,53		
L74	-74 390,13	+3 634 315,77		R74	-74 433,90	+3 635 253,48		
L75	-74 393,42	+3 634 256,60		R75	-74 432,63	+3 635 239,63		
L76	-74 397,93	+3 634 197,61		R76	-74 424,38	+3 634 744,70		
L77	-74 403,64	+3 634 138,71		R77	-74 464,38	+3 634 744,04		
L78	-74 444,06	+3 633 762,10		R78	-74 463,79	+3 634 709,04		
L79	-74 542,20	+3 632 856,61		R79	-74 433,05	+3 634 664,55		
L80	-74 553,22	+3 632 754,60		R80	-74 432,88	+3 634 654,55		
L81	-74 600,00	+3 632 321,73		R81	-74 422,88	+3 634 654,72		
L82	-74 608,71	+3 632 238,57		R82	-74 420,64	+3 634 519,74		
L83	-74 613,30	+3 632 164,17		R83	-74 420,67	+3 634 400,21		
L84	-74 614,49	+3 632 104,54		R84	-74 426,70	+3 634 261,27		
L85	-74 613,40	+3 632 044,68		R85	-74 439,21	+3 634 122,33		
L86	-74 609,83	+3 631 970,62		R86	-74 477,16	+3 633 771,47		
L87	-74 604,82	+3 631 925,08		R87	-74 575,99	+3 632 857,88		
L88	-74 600,50	+3 631 893,28		R88	-74 577,81	+3 632 840,97		
L89	-74 577,87	+3 631 842,90		R89	-74 578,25	+3 632 836,94		
L90	-74 572,25	+3 631 812,90		R90	-74 639,24	+3 632 273,12		
L91	-74 578,01	+3 631 767,90		R91	-74 647,59	+3 632 162,44		
L92	-74 576,35	+3 631 761,56		R92	-74 647,95	+3 632 051,61		
L93	-74 517,88	+3 631 522,61		R93	-74 640,28	+3 631 940,59		
L94	-74 496,94	+3 631 427,37		R94	-74 630,94	+3 631 878,88		
L95	-74 483,99	+3 631 343,99		R95	-74 622,91	+3 631 822,40		
L96	-74 477,23	+3 631 285,56		R96	-74 603,58	+3 631 731,93		
L97	-74 474,26	+3 631 240,94		R97	-74 547,15	+3 631 498,69		
L98	-74 473,41	+3 631 228,51		R98	-74 523,23	+3 631 382,51		
L99	-74 471,83	+3 631 204,81		R99	-74 507,89	+3 631 254,57		
L100	-74 470,04	+3 631 125,66		R100	-74 507,33	+3 631 239,47		
L101	-74 476,58	+3 630 041,77		R101	-74 503,58	+3 631 125,88		
L102	-74 477,89	+3 629 824,29		R102	-74 506,33	+3 630 652,40		

Vel	6	Van	7	P557/05
Sheet		of		

PADRESERWE KOÖRDINATE				/	ROAD RESERVE CO-ORDINATES			
LINKERKANT/LEFT HAND SIDE					REGTERKANT/RIGHT HAND SIDE			
	Y	X	WG 25°		Y	X		
L103	-74 478,29	+3 629 793,50		R103	-74 506,36	+3 630 648,35		
L104	-74 479,56	+3 629 576,11		R104	-74 506,58	+3 630 617,70		
L105	-74 481,81	+3 629 193,51		R105	-74 510,17	+3 630 008,26		
L106	-74 485,79	+3 628 514,30		R106	-74 510,84	+3 629 889,42		
L107	-74 491,50	+3 628 432,38		R107	-74 511,06	+3 629 865,22		
L108	-74 501,09	+3 628 350,51		R108	-74 512,62	+3 629 593,72		
L109	-74 510,71	+3 628 293,40		R109	-74 515,29	+3 629 584,69		
L110	-74 523,22	+3 628 235,20		R110	-74 512,68	+3 629 584,07		
L111	-74 541,55	+3 628 163,07		R111	-74 513,62	+3 629 419,54		
L112	-74 559,54	+3 628 106,74		R112	-74 514,94	+3 629 201,17		
L113	-74 574,70	+3 628 062,93		R113	-74 518,67	+3 628 565,93		
L114	-74 566,84	+3 628 059,27		R114	-74 522,60	+3 628 457,27		
L115	-74 671,88	+3 627 845,62		R115	-74 534,95	+3 628 349,18		
L116	-74 682,99	+3 627 823,28		R116	-74 555,59	+3 628 242,51		
L117	-74 793,33	+3 627 601,42		R117	-74 573,46	+3 628 177,64		
L118	-74 800,35	+3 627 586,97		R118	-74 584,56	+3 628 137,28		
L119	-75 097,06	+3 626 986,88		R119	-74 625,20	+3 628 026,04		
L120	-75 156,67	+3 626 834,84		R120	-74 651,59	+3 627 968,15		
L121	-75 176,68	+3 626 762,08		R121	-74 662,37	+3 627 944,47		
L122	-75 376,05	+3 626 037,06		R122	-74 666,38	+3 627 935,67		
L123	-75 383,59	+3 626 011,13		R123	-74 710,76	+3 627 846,05		
L124	-75 536,41	+3 625 453,95		R124	-74 729,40	+3 627 810,66		
L125	-75 542,04	+3 625 434,38		R125	-74 755,07	+3 627 756,45		
L126	-75 565,51	+3 625 368,64		R126	-74 836,22	+3 627 592,55		
L127	-75 598,01	+3 625 299,74		R127	-74 847,88	+3 627 569,04		
L128	-75 666,45	+3 625 203,08		R128	-74 923,69	+3 627 415,91		
L129	-75 674,63	+3 625 191,33		R129	-74 952,09	+3 627 363,02		
L130	-75 684,96	+3 625 161,53		R130	-74 976,93	+3 627 308,34		
L131	-75 703,53	+3 625 142,88		R131	-75 062,70	+3 627 135,14		
L132	-75 706,69	+3 625 139,75		R132	-75 181,61	+3 626 862,30		
L133	-75 754,87	+3 625 116,70		R133	-75 192,14	+3 626 827,66		
L134	-75 769,81	+3 625 104,93		R134	-75 206,46	+3 626 832,03		
L135	-75 831,05	+3 625 058,49		R135	-75 218,79	+3 626 791,33		
L136	-75 838,82	+3 625 054,50		R136	-75 204,49	+3 626 786,98		
L137	-75 935,67	+3 625 004,76		R137	-75 208,21	+3 626 774,65		
				R138	-75 411,76	+3 626 041,85		
				R139	-75 414,17	+3 626 033,37		
				R140	-75 574,46	+3 625 456,21		
C1	-74 450,48	+3 634 731,93		R141	-75 593,23	+3 625 388,16		
c2	-74 432,12	+3 634 727,51		R142	-75 635,40	+3 625 301,15		
c3	-74 436,54	+3 634 709,15		R143	-75 667,46	+3 625 252,46		
c4	-74 454,90	+3 634 713,57		R144	-75 704,58	+3 625 206,51		
				R145	-75 707,07	+3 625 204,10		
				R146	-75 938,58	+3 625 046,52		

Vel	7	Van	7	P557/05
Sheet		of		