

No. 727

28 July 2006

**THE SOUTH AFRICAN NATIONAL, ROADS
AGENCY LIMITED****DECLARATION AMENDMENT OF NATIONAL ROAD N10 SECTION 3**

AMENDMENT OF DECLARATION NO. 2136 OF 1992

By virtue of Section 40(1)(b) of The South African National Roads Agency Limited and National Roads Act, 1998 (Act No 7 of 1998) I hereby amend declaration No. 2316 of 1992 by replacing the section from the Great Fish River to Cradock in paragraph 5 of Schedule A with the subjoined sheets 1 to 25 of Plan P575/06 .

(National Road N10 Section 3: Great Fish River - Cradock)



MINISTER OF TRANSPORT

No. 727

28 Julie 2006

**DIE SUID AFRIKAANSE NASIONALE PADAGENTSKAP
BEPERK****MRKLARINGWYSIGING VAN NASIONALE PAD N10 SEKSIE 3**

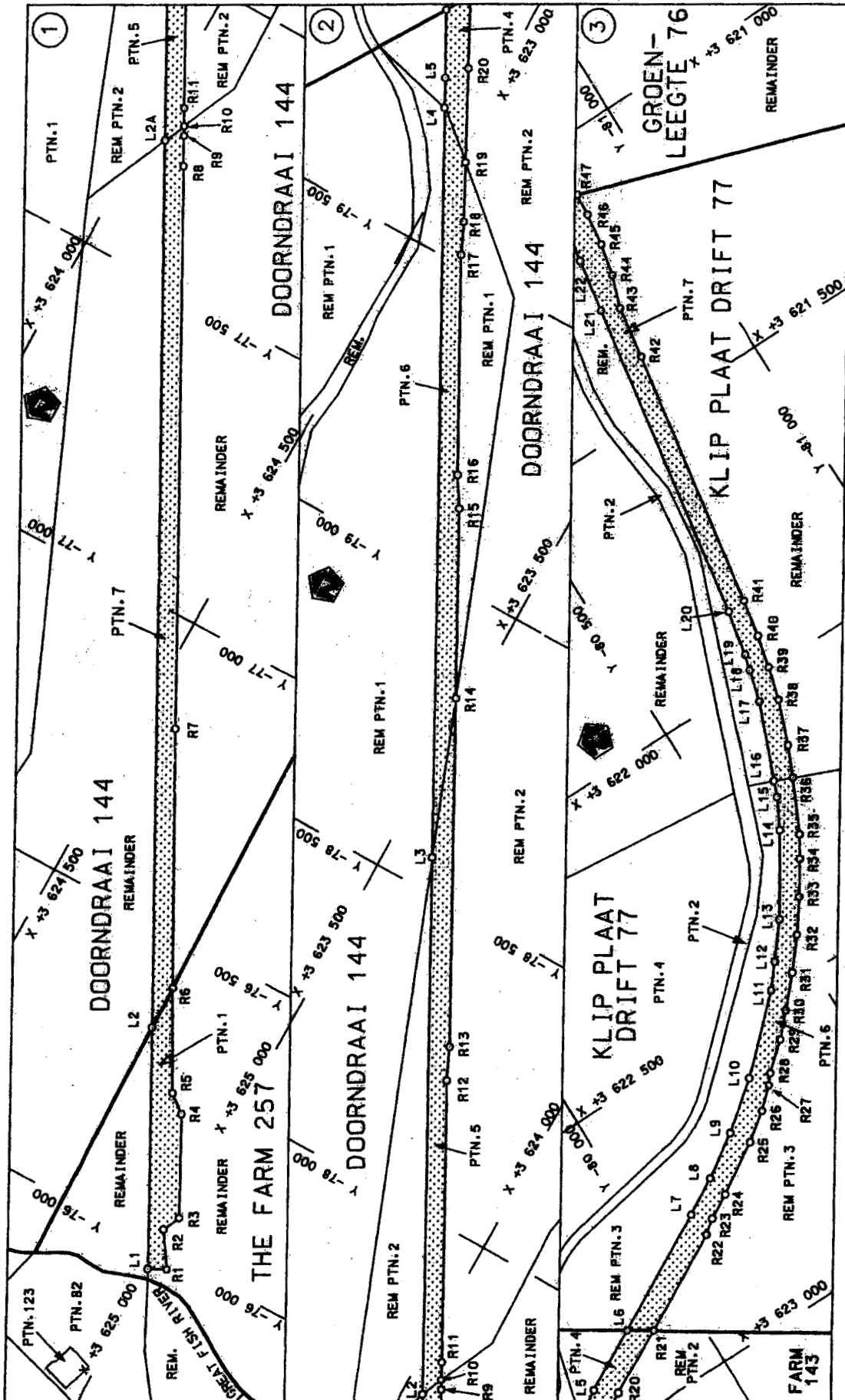
WYSIGING VAN VERKLARING NO. 2136 van 1992

Kragtens artikel 40 (1)(b) van die Suid Afrikaanse Nasionale Padagentskap Beperk en Nasionale Paaie Wet (wet No. 7 van 1998), wysig ek hiermee verklaring no. 2136 van 1992 deur daarin die gedeelte vanaf die Groot Vis Rivier tot Cradock in paragraaf 5 van Bylae A te vervang deur bygaande velle 1 tot 25 van Plan P575/06.

(Nasionale Pad N10 Seksie 3: Groot Vis Rivier - Cradock)

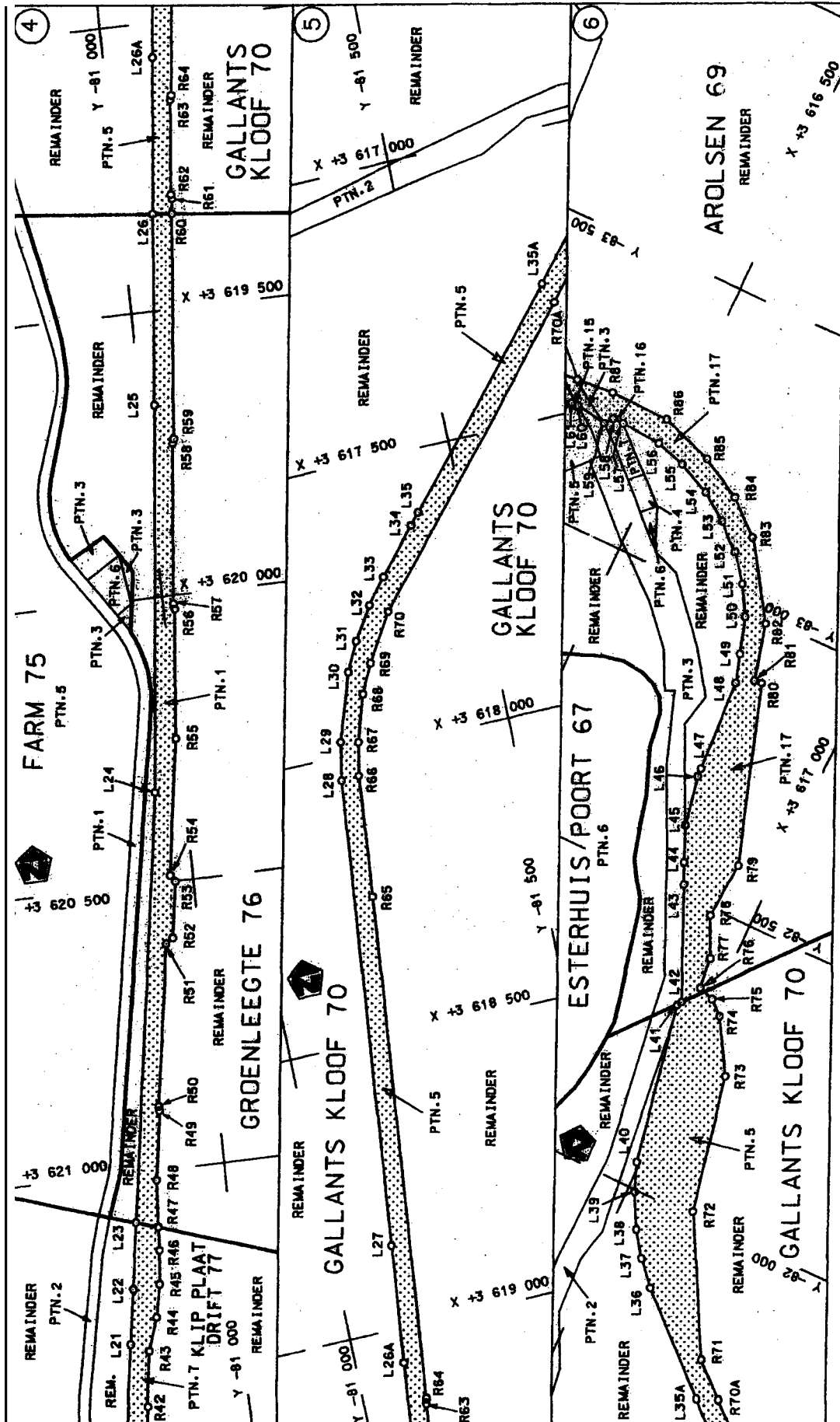


MINISTER OF TRANSPORT

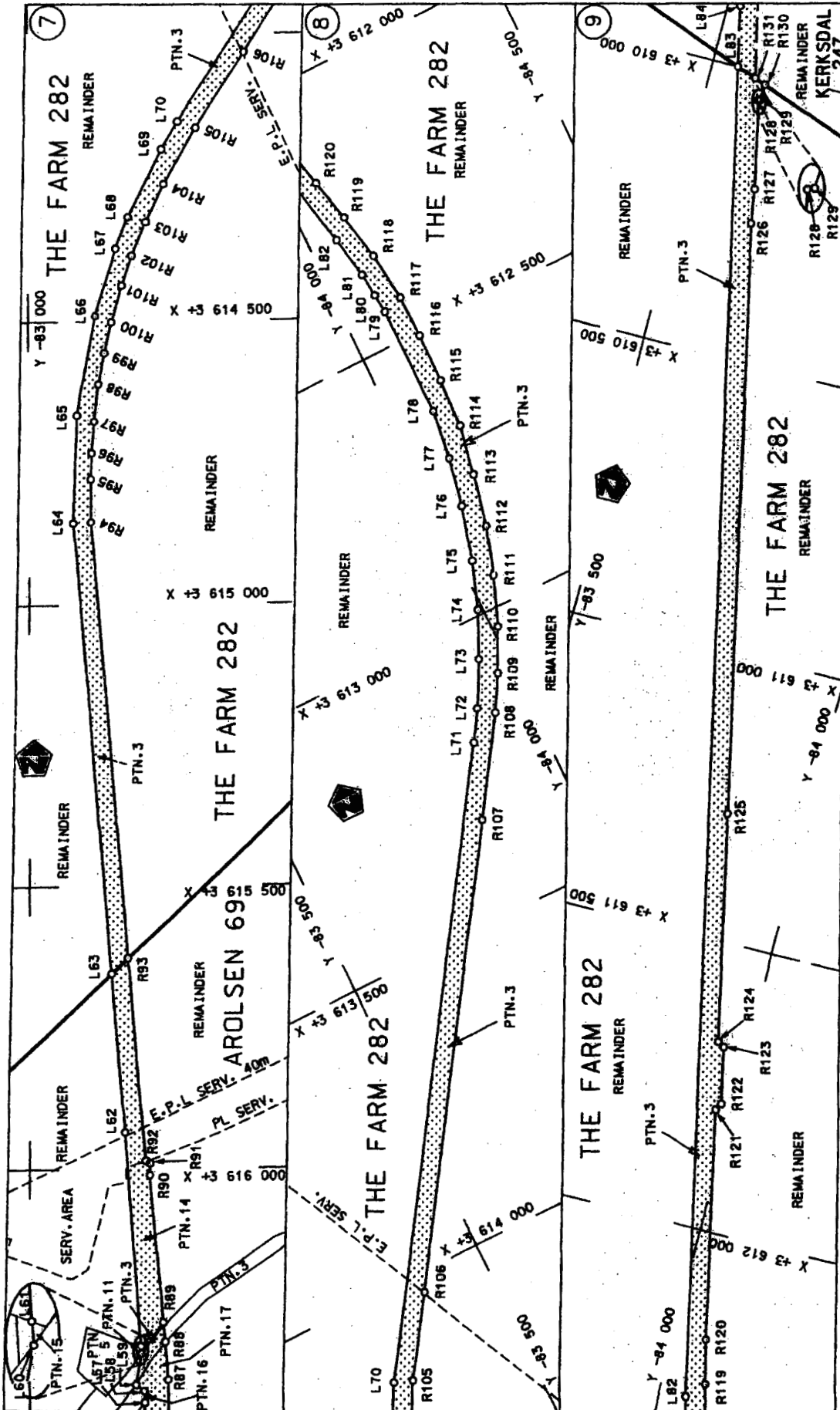


<p>Die Suid-Afrikaanse Nasionale Padagantakap Beperk The South African National Roads Agency Limited</p>	<p>Die figuur getoon The figure shown</p> <p>steedsde posseerwys voor van 'n gedeelte represents the road reserve of a portion van Nasionale Route N10 of National Route N10</p> <p>Section 3</p>	<p>Van Sheet 1 of 25 Plan P575/06</p>
--	---	---

D.O.9.A

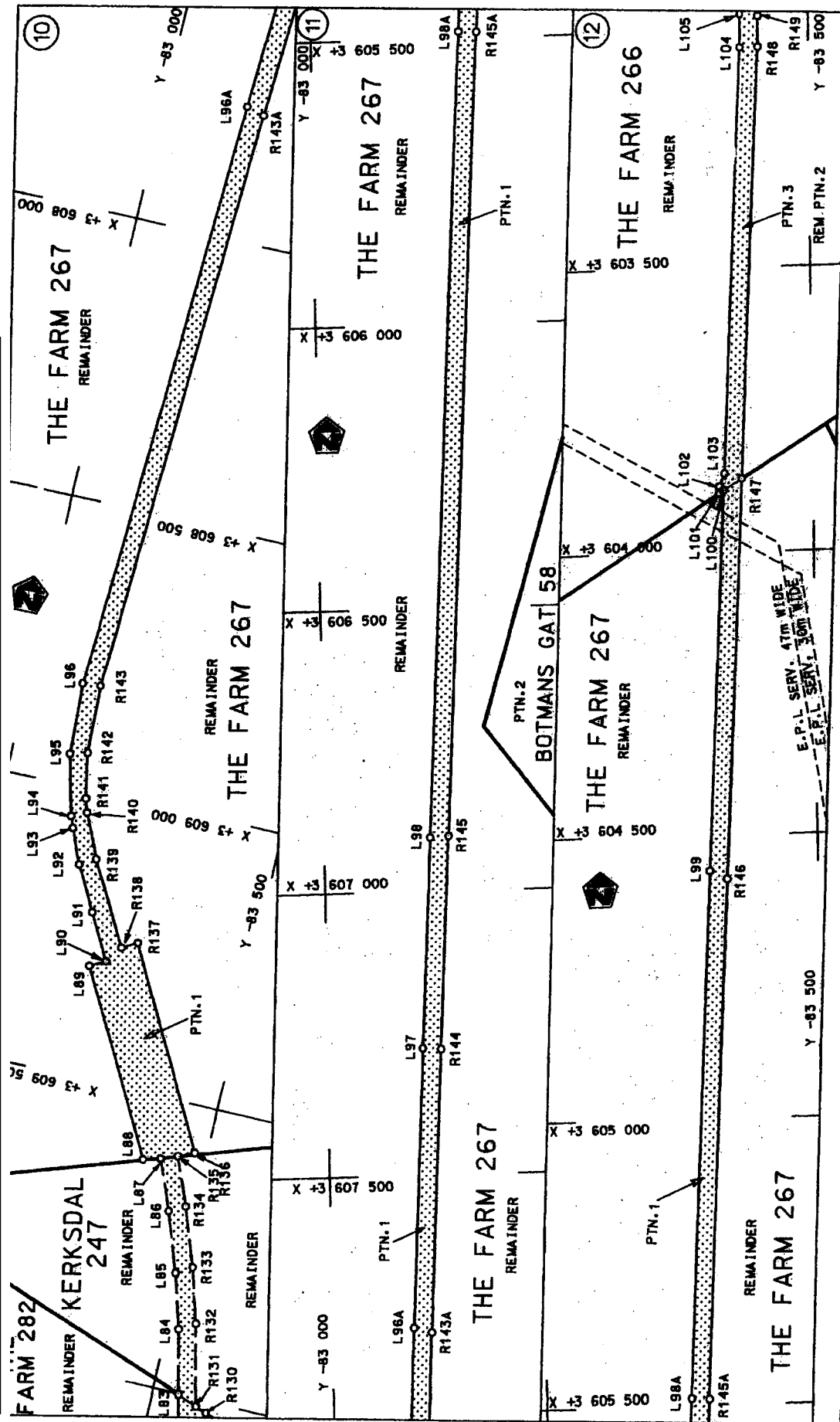


<p>Die Suid Afrikaanse Nasionale Padagentakop Bepark The South African National Roads Agency Limited</p>	<p>Die figuur getoon The figure shown</p>	<p>steidlike padreserwe voor van 'n gedeelte represents the road reserve of a portion van Nasionale Roete N10 of National Route</p>	<p>Vol Sheet 2 of 25</p>
<p>3</p>		<p>Plan P575/06</p>	<p>D.O.9.A</p>

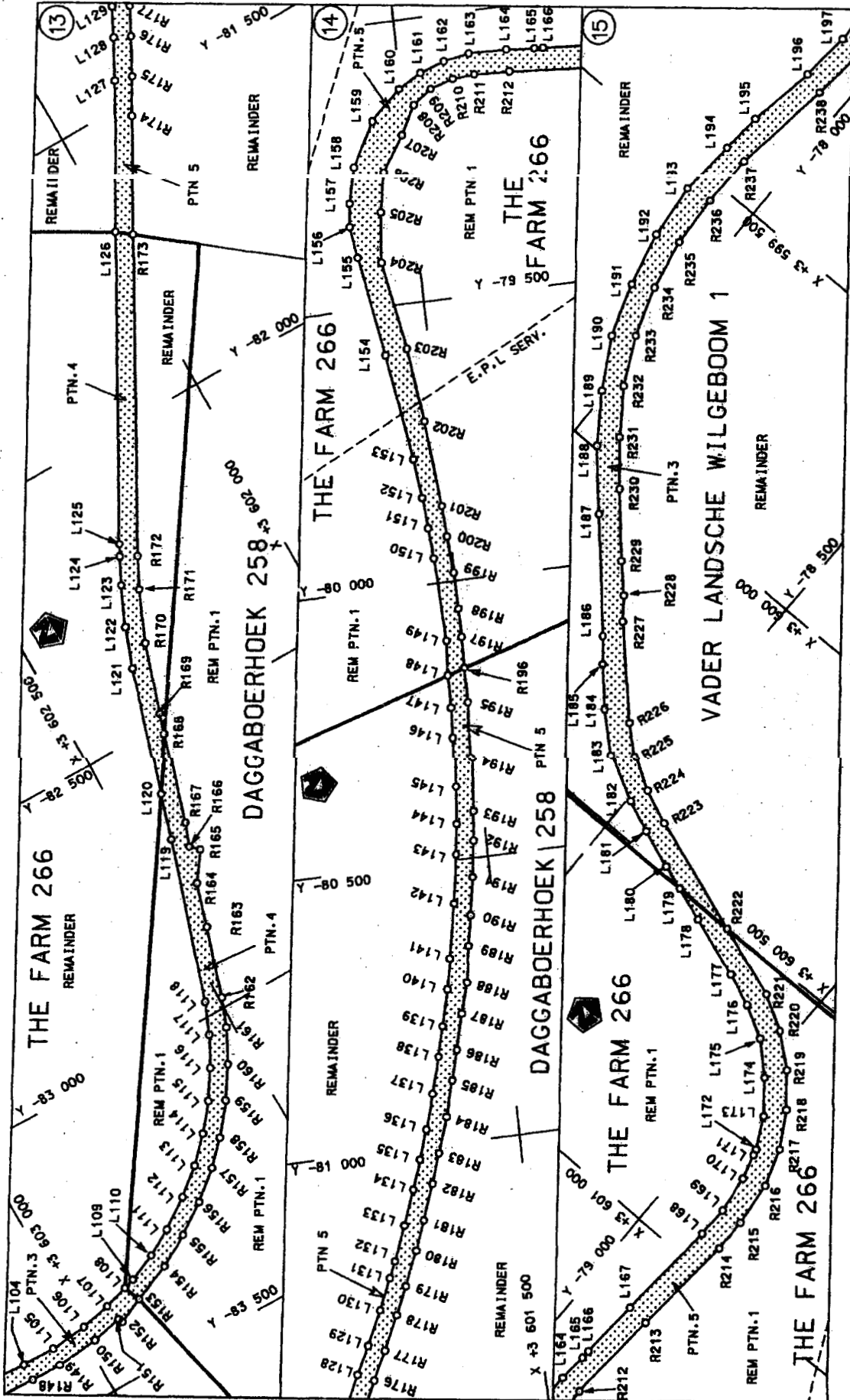


<p>Die Suid Afrikaanse Nasionale Padagentakap Bepark The South African National Roads Agency Limited</p>	<p>Die figuur getoon The figure shown</p>	<p>stelt die padreserwe voor van 'n gedeelte represents the road reserve of a portion van Nasionale Roete N10 of National Route N10 Section</p>	<p>Vel Sheet 3 of 25 Plan P575/06</p>
--	---	---	---

D.O.9.A



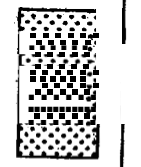
<p>Die Suid Afrikaanse Nasionale Padagentskap Beprek The South African National Roads Agency Limited</p>	<p>Die figuur gasteen The figure shown</p>	<p>stelsel padreserwe konor vath gedeelte represents the road, it reserve a portion van Nasionale Route of National Route</p> <p>101 Section</p>	<p>Vol Sheet 4 of 25 Plan P575/06</p>
--	--	--	---



Die Suid Afrikaanse Nasionale Padagentakap Bepark
The South African National Roads Agency Limited

Die figuur getoon
The figure shown

steëdië adresse we. voor. van 'n gedeelte
represents the road reserve of a portion
van Nasionale Rêete N10
of National Route



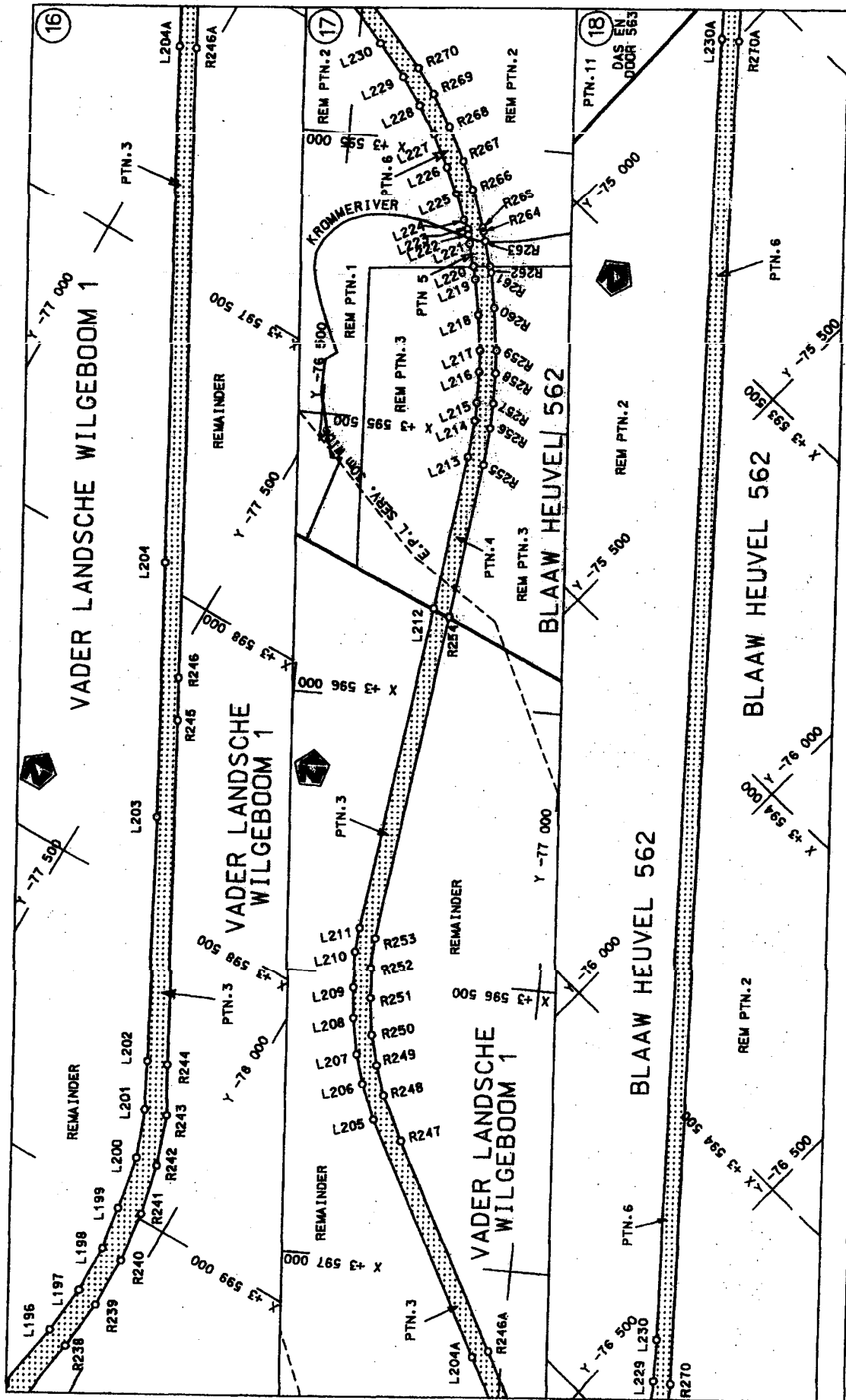
el. van
heet 5 of 25

Plan P575/06

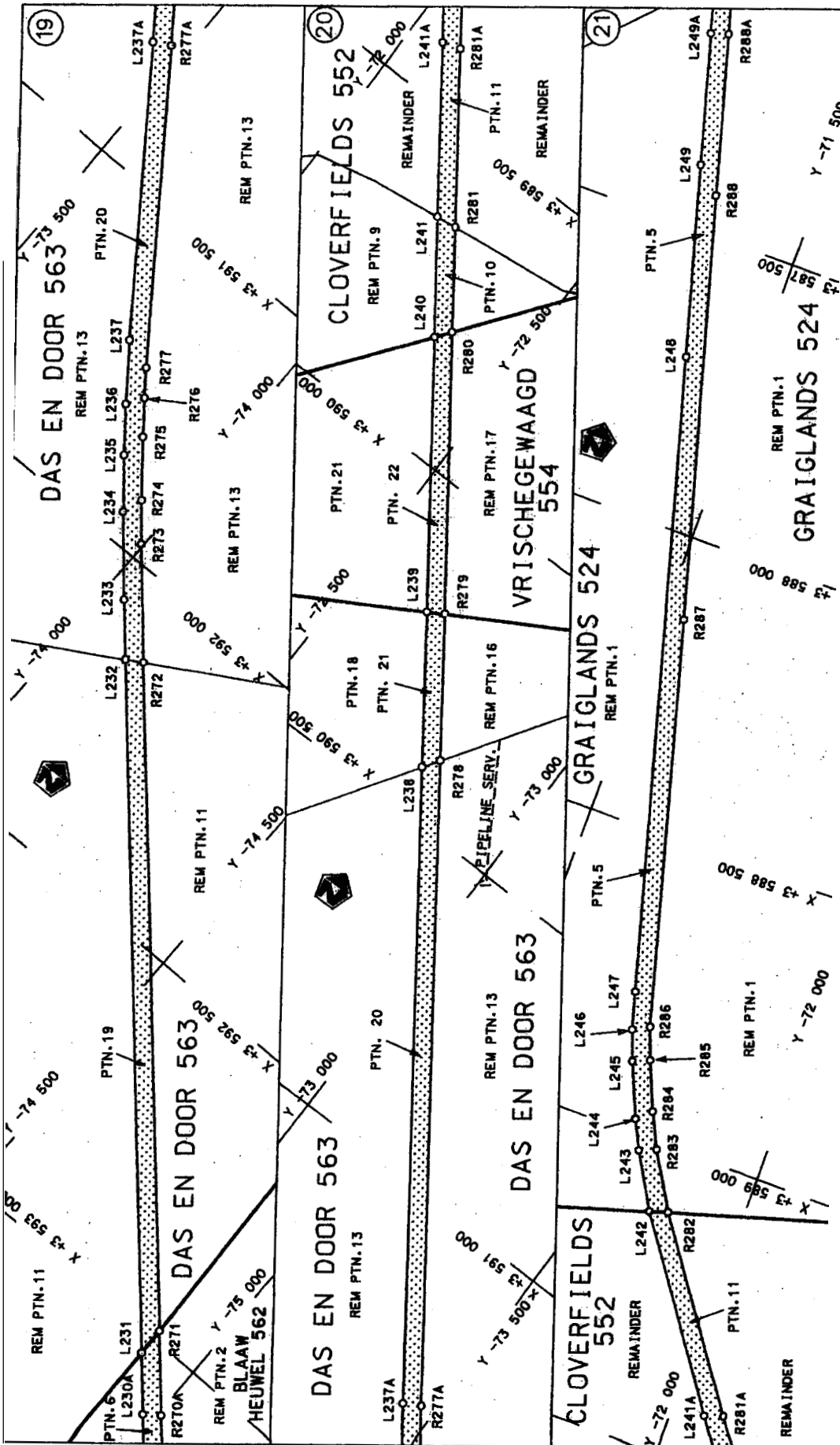
3

Seksie
Section

D.O.9.A



<p>Die Suid-Afrikaanse Nasionale Padagentskap Bepoerk The South African National Roads Agency Limited</p>	<p>Ore figur gatbon The gatbon shown</p>	<p>staldie padreserwied oor van 'n gedeselde represents the road reserve of a portion van Nasionale Roete N10 of National Route</p>	<p>Vel van Sheet 6 of 25 Plan P53/06</p>
<p>3</p>		<p>Section</p>	

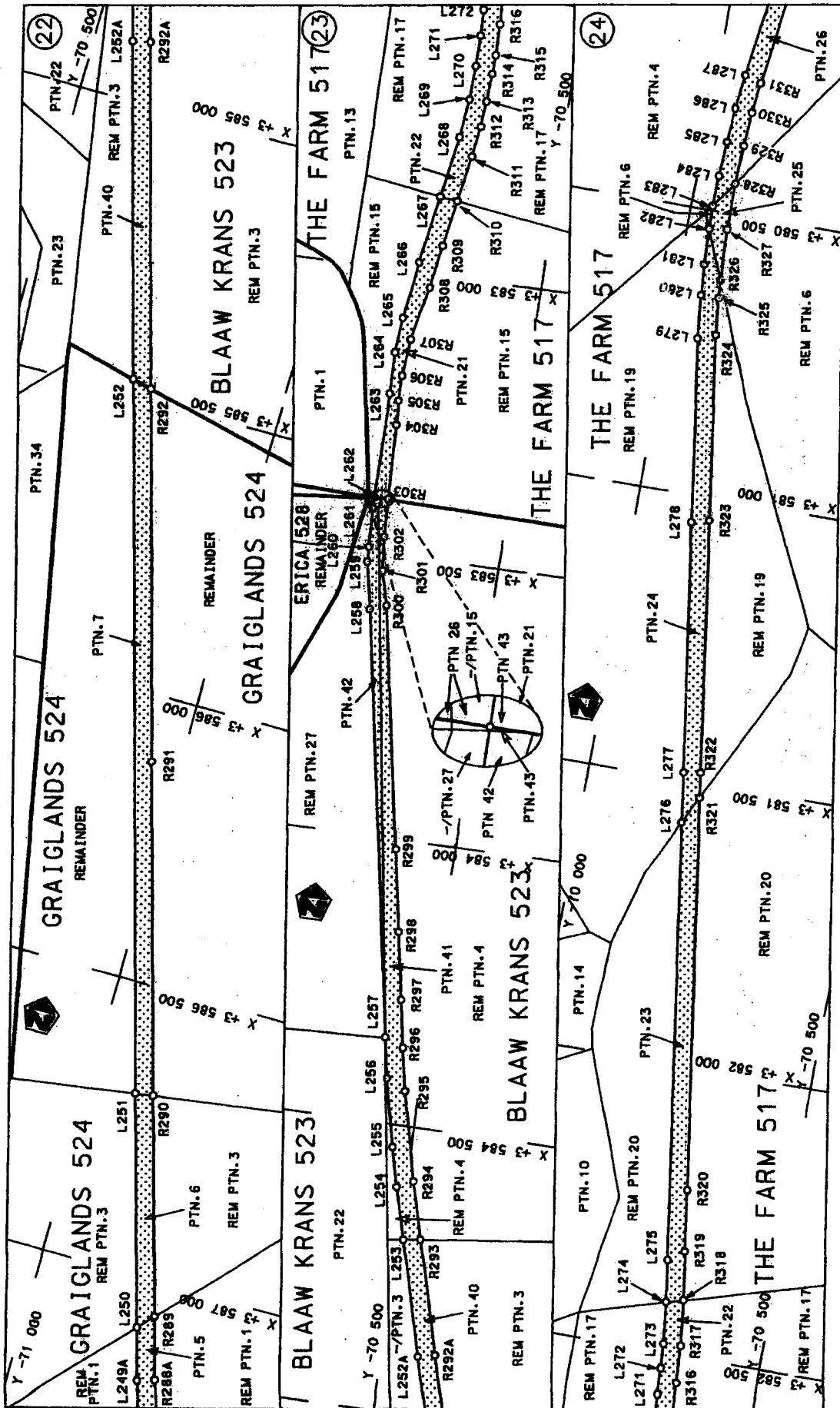


Die Suid Afrikaanse Nasionale Padagentskap Bepark
 The South African National Roads Agency Limited

Die figuur getoon
 The figure shown

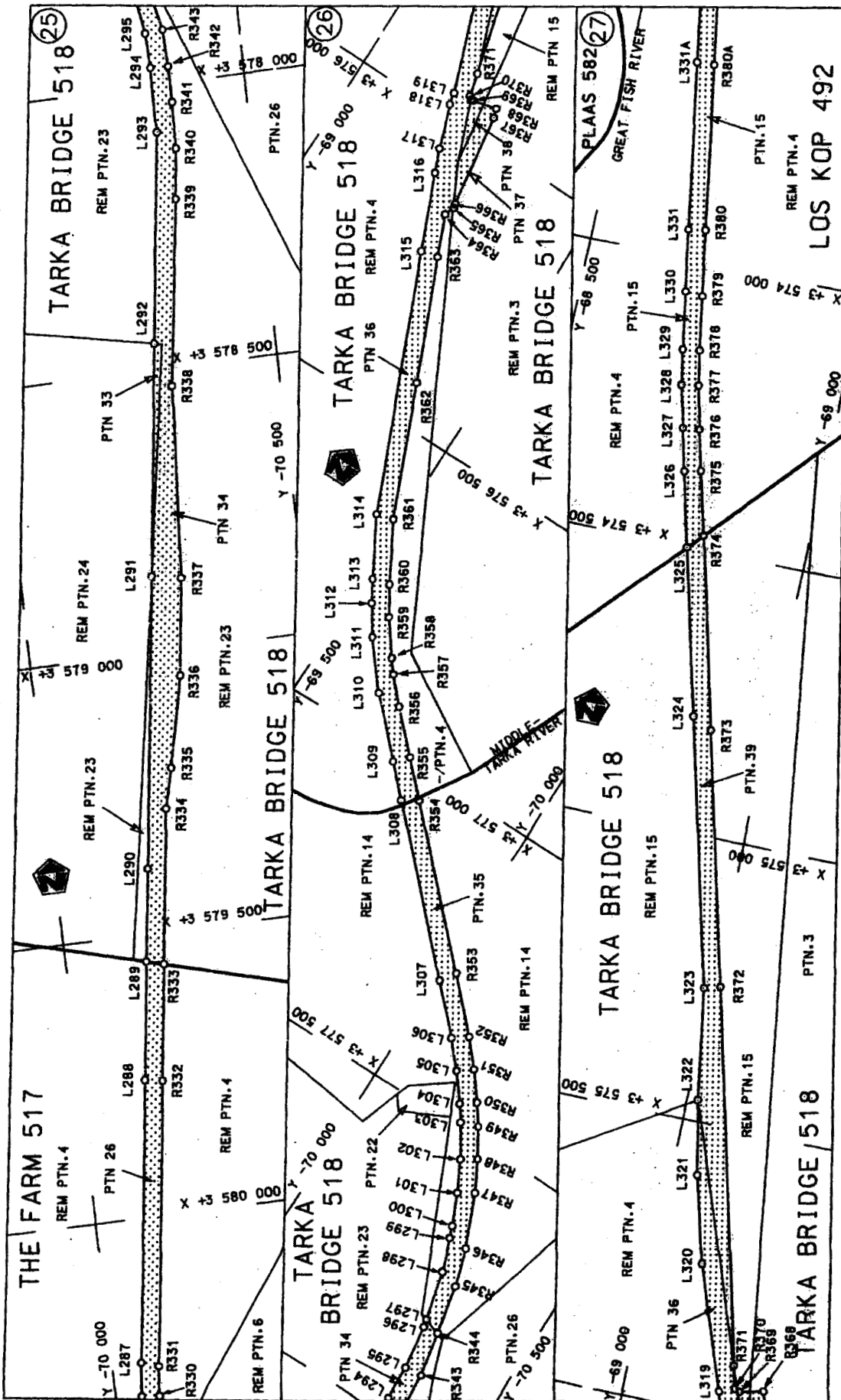
stel die padreserwe voor van 'n gedeeltes
 represents the road reserve of a part of
 van Nasionale Roete N10 Sektiele
 of National Route Section

Van
 Sheet 7 van 25
 van
 3
 van
 25



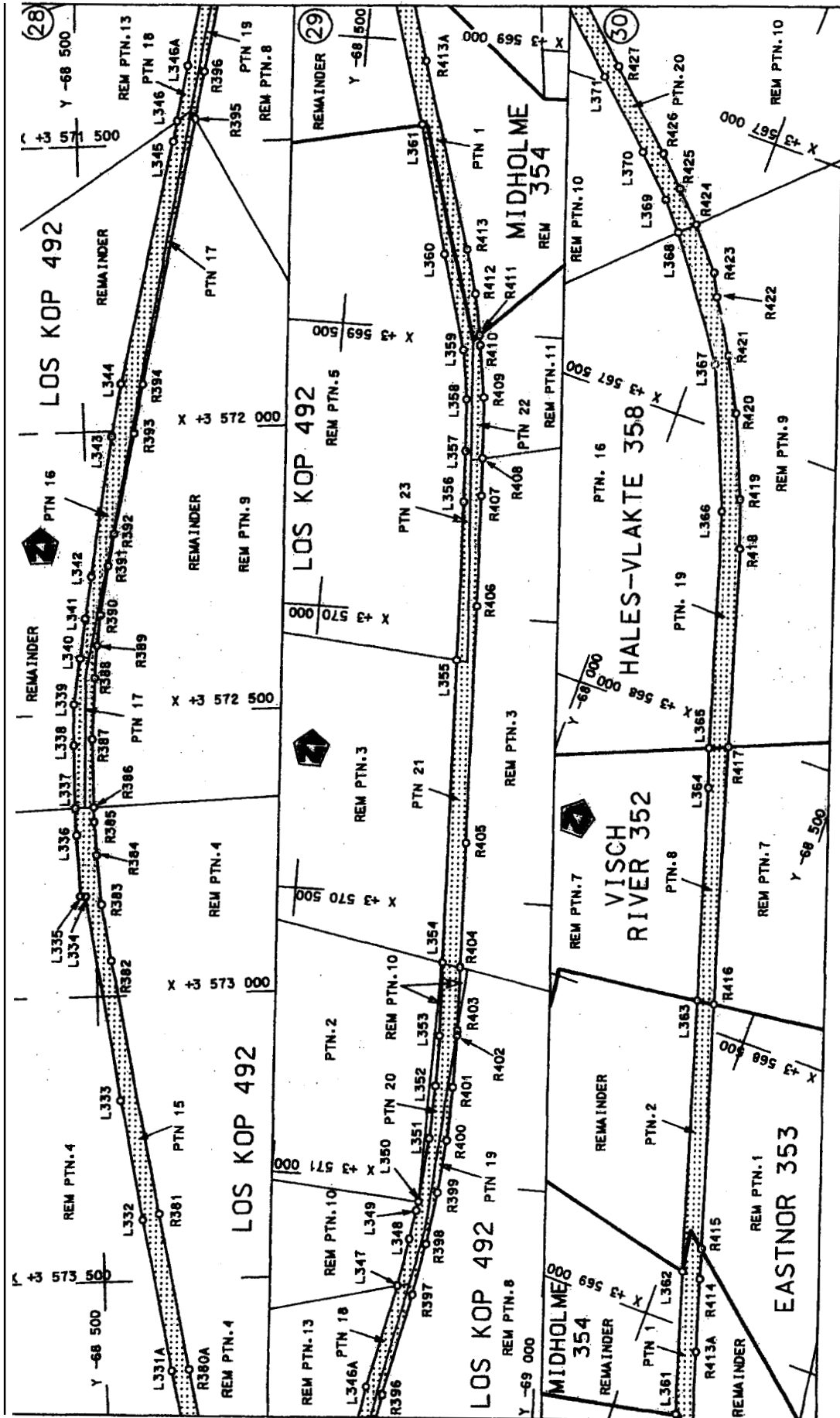
<p>Die Suid Afrikaanse Nasionale Padagantakap Beprek The South African National Roads Agency Limited</p>	<p>Die figuur getoon The figure shown</p>	<p>stelt die padreserwe voor van 'n gedeelte represents the road reserve of a portion van Nasionale Roete N10 of National Route N10</p> <p style="text-align: center;">3</p>	<p>Vel Sheet 8 of 25</p> <p>Plan P575/06</p>
--	---	--	--

D.O.9.A



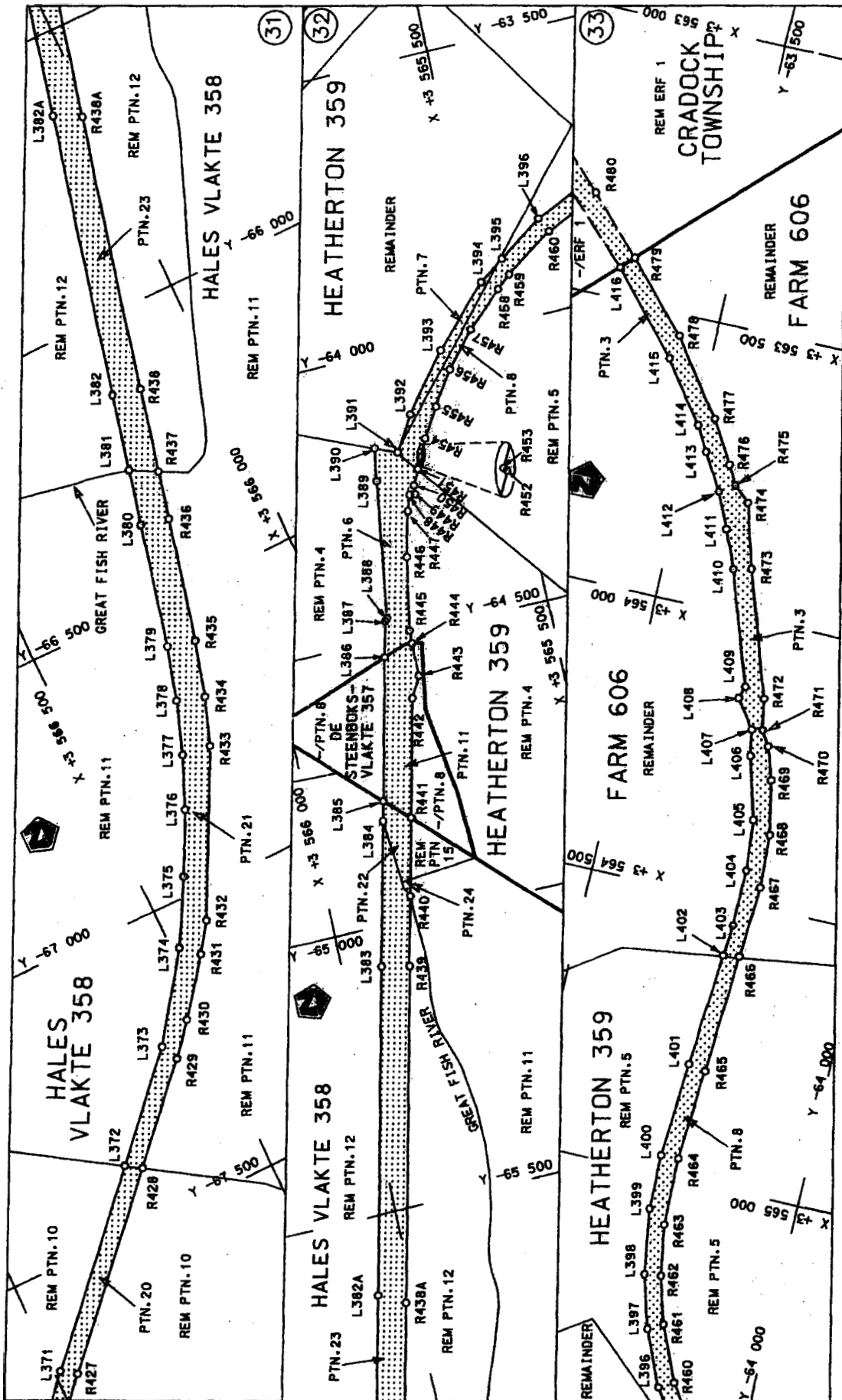
<p>Die Suid Afrikaanse Nasionale Padagentskap Beperk The South African National Roads Agency Limited</p>	<p>Die figuur getoon The figure shown</p>	<p>stel die padreerwe voor van 'n gedeelte represents the road reserve of a portion van Nasionale Roete N10 of National Route</p>	<p>3</p>	<p>Vel Sheet 9 of 25</p>	<p>Plan P575/06</p>
--	---	---	----------	------------------------------	---------------------

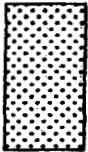
D.O.9.A



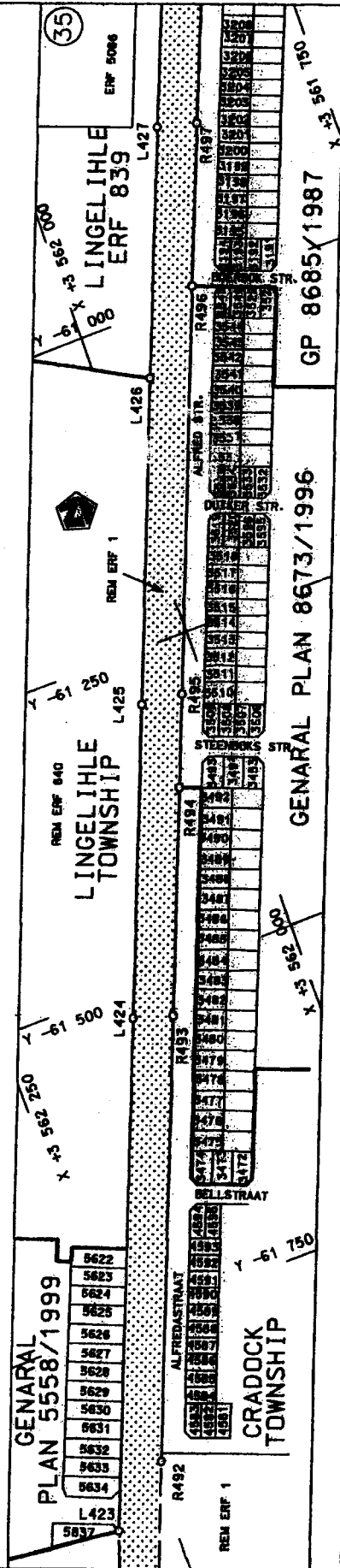
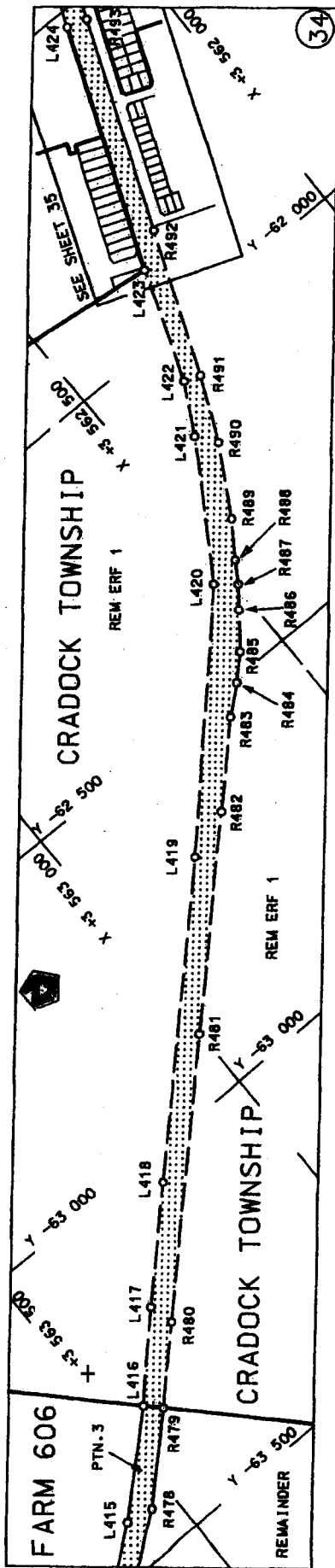
<p>Die Suid Afrikaanse Nasionale Padagentakop Beperk The South African National Roads Agency Limited</p>	<p>Die figuur getoon The figure shown</p>	<p>stelde padreserwe voor van 'n gedeelte represents the road reserve of a portion van Nasionale Route N10 of National Route</p>	<p>Vel Sheet 10 van 25</p> <p>Plan P575/06</p>
		<p>3 Seksie Section</p>	<p>3</p>

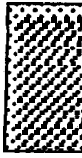
D.O.9.A

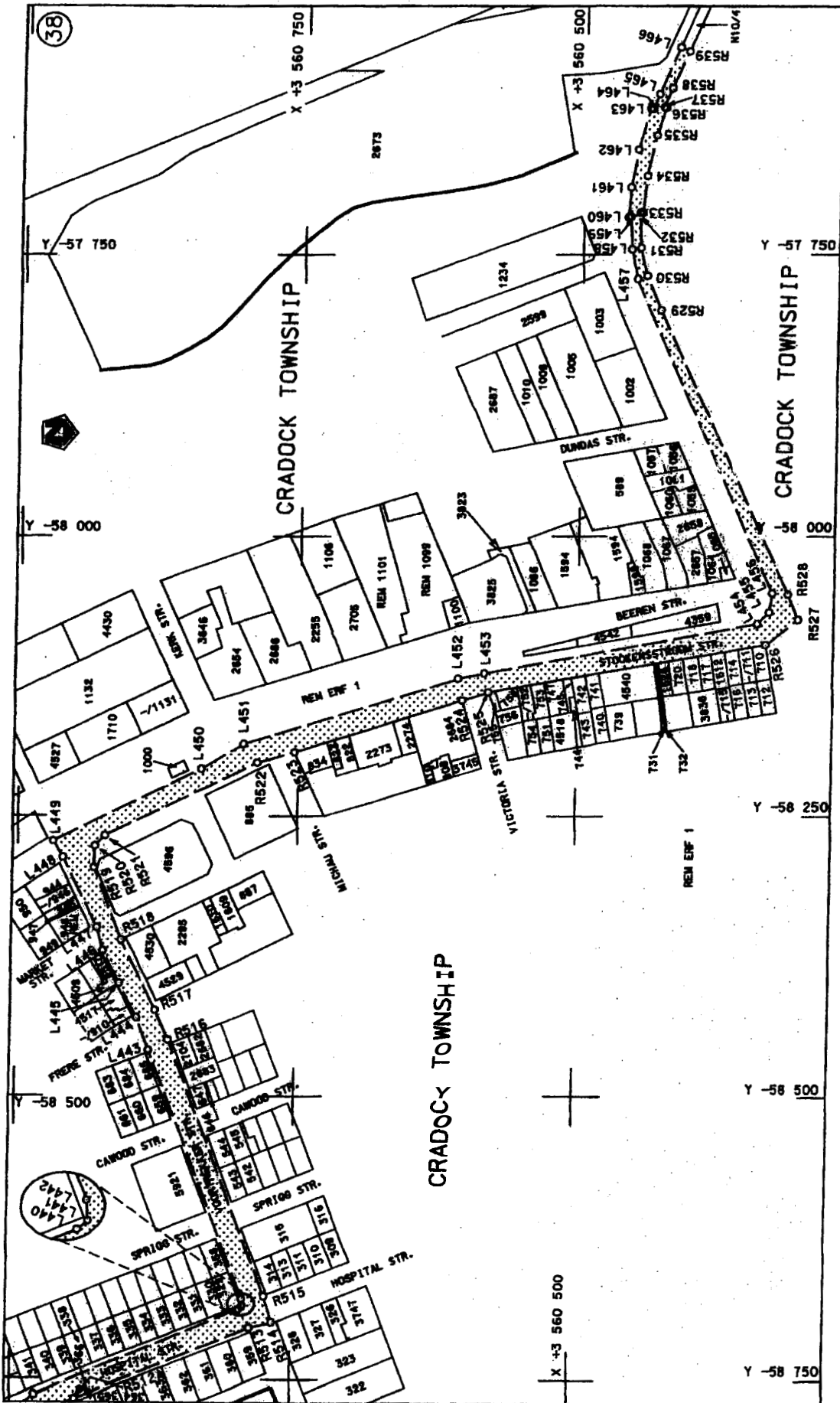


Die Suid Afrikaanse Nasionale Padagentakap Bepark The South African National Roads Agency Limited	Die figuur getoon The figure shown		stelde padreserwe voor van 'n gedeelte represents the road reserve of a portion van Nasionale Route N10 of National Route	Vel Sheet 11 of 25
				Plan P575/06

D.O.9.A



<p>Die Suid Afrikaanse Nasionale Padagentskap Bepark The South African National Roads Agency Limited</p>	 <p>Die figuur getoon The figure shown</p>	<p>steeldie padreserwe voor van 'n gedeelte represents the road reserve of a portion van Nasionale Reete N10 of National Route</p>	<p>Vel van Sheet 12 of 25</p> <p>Plan P575/06</p>
<p>Section 3</p>		<p>GP 8685/1987</p>	
<p>GENERAL PLAN 5558/1999</p>		<p>GENERAL PLAN 8673/1996</p>	



<p>Die Suid Afrikaanse Nasionale Padagentakap Bepark The South African National Roads Agency Limited</p>	<p>Die figuur getoon The figure shown</p>	<p>stel die padreserwe voor van 'n gedeelte represents the road reserve of a portion van Nasionale-Roete N10 Sektie of National Route N10 Section</p>	<p>Vel Sheet 14 of 25</p>
<p>Die figuur getoon The figure shown</p>		<p>3</p>	<p>Plan P575/06</p>

LINKERKANT/LEFT HAND SIDE			REGTERKANT/RIGHT HAND SIDE			
	Y	X	WG 25		Y	X
L52	- 83 081.840	3 616 689.690	R52	- 80 952.930	3 620 599.530	
L53	- 83 121.220	3 616 646.380	R53	- 80 968.380	3 620 500.98	
L54	- 83 153.940	3 616 597.500	R54	- 80 960.250	3 620 489.441	
L55	- 83 180.870	3 616 538.280	R55	- 80 996.190	3 620 251.381	
L56	- 83 196.540	3 616 483.490	R56	- 81 019.180	3 620 025.071	
L57	- 83 201.270	3 616 411.070	R57	- 81 017.920	3 620 015.451	
L58	- 83 201.150	3 616 301.590	R58	- 81 047.490	3 619 733.800	
L59	- 83 187.390	3 616 380.420	R59	- 81 049.880	3 619 726.720	
L60	- 83 196.190	3 616 324.440	R60	- 81 090.500	3 619 334.290	
L61	- 83 195.270	3 616 312.070	R61	- 81 093.200	3 619 308.280	
L62	- 83 167.430	3 615 935.080	R62	- 81 092.280	3 619 300.810	
L63	- 83 144.360	3 615 656.270	R63	- 81 109.190	3 619 137.360	
L64	- 83 078.080	3 614 855.530	R64	- 81 111.650	3 619 129.910	
L65	- 83 084.820	3 614 665.560	R65	- 81 202.240	3 618 253.740	
L66	- 83 117.610	3 614 490.260	R66	- 81 223.080	3 618 040.370	
L67	- 83 154.810	3 614 372.920	R67	- 81 214 170	3 617 982.350	
L68	- 83 176.890	3 614 318.020	R68	- 81 259.630	3 617 901.800	
L69	- 83 234.860	3 614 200.810	R69	- 81 285.050	3 617 851.520	
L70	- 83 262.930	3 614 152.760	R70	- 81 333.880	3 617 770.380	
L71	- 83 881.670	3 613 199.900	R71	- 81 783.930	3 617 248.051	
L72	- 83 913.460	3 613 148.080	R72	- 82 009.530	3 617 122.941	
L73	- 83 954.800	3 613 070.330	R73	- 82 246.540	3 617 073.570	
L74	- 83 990.650	3 612 990.230	R74	- 82 336.020	3 617 018.461	
L75	- 84 020.180	3 612 907.150	R75	- 82 357.500	3 616 992.850	
L76	- 84 045.780	3 612 812.250	R76	- 82 366.140	3 616 965.560	
L77	- 84 062.290	3 612 726.050	R77	- 82 419.920	3 616 960.490	
L78	- 84 072.260	3 612 638.600	R78	- 82 487.700	3 616 927.270	
L79	- 84 070.620	3 612 441.180	R79	- 82 587.220	3 616 934.970	
L80	- 84 067.130	3 612 407.610	R80	- 82 893.880	3 616 834.240	
L81	- 84 062.370	3 612 365.360	R81	- 82 892.460	3 616 820.400	
L82	- 84 048.520	3 612 290.210	R82	- 82 990.490	3 616 795.190	
L83	- 83 545.810	3 610 000.500	R83	- 83 118.530	3 616 708.760	
L84	- 83 520.740	3 609 890.320	R84	- 83 167.960	3 616 649.140	
L85	- 83 493.120	3 609 795.480	R85	- 83 207.850	3 616 574.680	
L86	- 83 456.210	3 609 691.820	R86	- 83 239.950	3 616 478.840	
L87	- 83 421.300	3 609 605.920	R87	- 83 242.660	3 616 371.870	
L88	- 83 391.530	3 609 614.360	R88	- 83 236.630	3 616 304.560	
L89	- 83 221.140	3 609 303.190	R89	- 83 233.590	3 616 270.570	
L90	- 83 247.770	3 609 288.770	R90	- 83 210.360	3 616 010.870	
L91	- 83 204.420	3 609 210.060	R91	- 83 210.920	3 615 990.140	
L92	- 83 162.370	3 609 132.480	R92	- 83 203.350	3 615 985.910	
L93	- 83 136.160	3 609 071.960	R93	- 83 173.720	3 615 628.510	
L94	- 83 128.580	3 609 052.310	R94	- 83 109.480	3 614 853.770	
L95	- 83 112.940	3 608 991.070	R95	- 83 108.880	3 614 777.860	
L96	- 83 095.170	3 608 819.120	R96	- 83 110.750	3 614 731.710	
L97	- 83 169.090	3 607 277.420	R97	- 83 115.130	3 614 676.510	
L98	- 83 187.700	3 606 905.150	R98	- 83 124.130	3 614 610.620	
L99	- 83 307.140	3 604 562.740	R99	- 83 134.510	3 614 556.130	
L100	- 83 341.090	3 603 892.780	R100	- 83 146.520	3 614 501.930	
L101	- 83 333.620	3 603 897.490	R101	- 83 165.380	3 614 437.890	
L102	- 83 334.230	3 603 886.000	R102	- 83 183.220	3 614 385.530	

Van 25 P575/06

Vel 16 of

Sheet

PADRESERWE KOÖRDINATE / ROAD RESERVE CO-ORDINATES

LINKERKANT/LEFT HAND SIDE			REGTERKANT/RIGHTHAND SIDE		
	Y	X	WG 25	Y	X
L103	- 83 342.500	3 603 863.490	R103	- 83 208.410	3 614 326.740
L104	- 83 380.100	3 603 116.190	R104	- 83 239.200	3 614 261.530
L105	- 83 380.040	3 603 057.310	R105	- 83 294.620	3 614 164.630
L106	- 83 373.340	3 602 991.960	R106	- 83 380.520	3 614 032.990
L107	- 83 361.770	3 602 938.550	R107	- 83 836.420	3 613 329.320
L108	- 83 348.520	3 602 895.710	R108	- 83 939.370	3 613 168.970
L109	- 83 342.290	3 602 876.190	R109	- 83 974.320	3 613 107.770
L110	- 83 320.510	3 602 826.940	R110	- 04 010.330	3 613 033.460
L111	- 83 294.240	3 602 779.720	R111	- 84 043.310	3 612 947.160
L112	- 83 258.950	3 602 727.680	R112	- 84 069.710	3 612 863.670
L113	- 83 220.740	3 602 681.660	R113	- 84 089.160	3 612 771.590
L114	- 83 177.840	3 602 641.060	R114	- 84 104.470	3 612 683.490
L115	- 83 132.220	3 602 604.610	R115	- 84 108.950	3 612 595.450
L116	- 83 082.310	3 602 572.710	R116	- 84 108.160	3 612 507.320
L117	- 83 029.630	3 602 545.890	R117	- 84 105.740	3 612 431.930
L118	- 82 974.680	3 602 524.440	R118	- 84 095.490	3 612 344.400
L119	- 82 689.680	3 602 437.880	R119	- 84 078.150	3 612 260.730
L120	- 82 609.350	3 602 413.570	R120	- 84 058.730	3 612 184.180
L121	- 82 387.110	3 602 346.310	R121	- 83 972.790	3 611 789.580
L122	- 82 315.500	3 602 321.630	R122	- 83 980.390	3 611 777.420
L123	- 82 246.100	3 602 291.520	R123	- 83 958.990	3 611 679.750
L124	- 82 199.330	3 602 268.740	R124	- 83 047.150	3 611 672.370
L125	- 82 179.980	3 602 258.760	R125	- 83 860.780	3 611 278.050
L126	- 81 690.760	3 601 995.300	R126	- 83 638.070	3 610 260.350
L127	- 81 456.030	3 601 868.360	R127	- 83 628.860	3 610 200.970
L128	- 81 388.640	3 601 833.710	R128	- 83 595.550	3 610 048.960
L129	- 81 338.830	3 601 809.490	R129	- 83 599.070	3 610 047.600
L130	- 81 279.240	3 601 781.830	R130	- 83 600.360	3 610 020.210
L131	- 81 224.880	3 601 758.500	R131	- 83 580.741	3 610 013.121
L132	- 81 196.110	3 601 746.060	R132	- 83 548.620	3 609 874.230
L133	- 81 135.340	3 601 721.810	R133	- 83 520.810	3 609 779.080
L134	- 81 074.190	3 601 699.160	R134	- 83 484.020	3 609 677.370
L135	- 81 022.610	3 601 681.180	R135	- 83 450.544	3 609 594.776
L136	- 80 970.600	3 601 664.360	R136	- 83 478.490	3 609 582.960
L137	- 80 909.290	3 601 645.420	R137	- 83 295.260	3 609 244.850
L138	- 80 844.660	3 601 627.600	R138	- 83 268.680	3 609 259.330
L139	- 80 791.770	3 601 614.100	R139	- 83 189.710	3 609 116.540
L140	- 80 727.900	3 601 598.940	R140	- 83 155.170	3 609 040.160
L141	- 80 674.210	3 601 587.710	R141	- 83 147.130	3 609 016.450
L142	- 80 577.630	3 601 569.710	R142	- 83 131.500	3 608 936.910
L143	- 80 490.660	3 601 556.510	R143	- 83 128.630	3 608 816.280
L144	- 80 435.980	3 601 549.610	R144	- 83 201.800	3 607 279.500
L145	- 80 369.330	3 601 542.640	R145	- 83 220.760	3 606 903.350
L146	- 80 280.820	3 601 535.720	R146	- 83 337.690	3 604 577.750
L147	- 80 226.150	3 601 532.910	R147	- 83 373.420	3 603 872.800
L148	- 80 167.940	3 601 531.250	R148	- 83 411.700	3 603 115.910
L149	- 80 105.650	3 601 527.220	R149	- 83 411.810	3 603 061.480
L150	- 79 955.790	3 601 534.040	R150	- 83 403.630	3 602 985.450
L151	- 79 901.180	3 601 537.220	R151	- 83 392.210	3 602 932.060
L152	- 79 846.350	3 601 541.790	R152	- 83 399.620	3 602 928.400
L153	- 79 776.550	3 601 550.530	R153	- 83 378.090	3 602 883.440

Sheet of

00000000

PADRESERWE KOÖRDINATE / ROAD RESERVE CO-ORDINATES					
LINKERKANT/LEFT HAND SIDE			REGTERKANT/RIGHT HAND SIDE		
	Y	X	WG 25	Y	X
L154	- 79 586.020	3 601 578.750	R154	- 83 349.420	3 602 815.630
L155	- 79 407.450	3 601 608.840	R155	- 83 317.890	3 602 758.950
L156	- 79 351.710	3 601 617.060	R156	- 83 281.550	3 602 705.420
L157	- 79 310.430	3 601 612.950	R157	- 83 239.670	3 602 656.450
L158	- 79 247.790	3 601 598.850	R158	- 83 199.090	3 602 618.260
L159	- 79 171.290	3 601 557.150	R159	- 83 146.620	3 602 577.120
L160	- 79 121.170	3 601 502.940	R160	- 83 091.840	3 602 542.250
L161	- 79 097.090	3 601 461.620	R161	- 83 033.110	3 602 513.050
L162	- 79 082.260	3 601 417.830	R162	- 82 982.820	3 602 494.450
L163	- 79 074.640	3 601 371.640	R163	- 82 859.670	3 602 457.150
L164	- 79 076.120	3 601 303.740	R164	- 82 782.070	3 602 435.420
L165	- 79 080.010	3 601 252.950	R165	- 82 732.290	3 602 400.730
L166	- 79 081.240	3 601 237.350	R166	- 82 718.010	3 602 415.820
L167	- 79 088.880	3 601 130.890	R167	- 82 676.270	3 602 401.020
L168	- 79 103.230	3 600 948.300	R168	- 82 518.370	3 602 354.230
L169	- 79 105.280	3 600 893.660	R169	- 82 482.010	3 602 343.450
L170	- 79 096.450	3 600 827.820	R170	- 82 357.950	3 602 304.510
L171	- 79 083.750	3 600 784.160	R171	- 82 268.370	3 602 267.540
L172	- 79 080.850	3 600 773.950	R172	- 82 214.440	3 602 241.280
L173	- 79 052.880	3 600 720.780	R173	- 81 710.210	3 601 970.090
L174	- 79 010.580	3 600 666.680	R174	- 81 526.280	3 601 871.780
L175	- 78 959.400	3 600 618.690	R175	- 81 464.790	3 601 837.690
L176	- 78 902.420	3 600 587.990	R176	- 81 402.070	3 601 805.460
L177	- 78 845.020	3 600 564.890	R177	- 81 351.610	3 601 780.710
L178	- 78 736.420	3 600 527.430	R178	- 81 291.980	3 601 753.130
L179	- 78 675.780	3 600 506.890	R179	- 81 242.510	3 601 731.620
L180	- 78 631.520	3 600 491.820	R180	- 81 182.030	3 601 706.530
L181	- 78 562.950	3 600 466.190	R181	- 81 130.310	3 601 686.290
L182	- 78 506.450	3 600 442.610	R182	- 81 067.600	3 601 663.670
L183	- 78 427.270	3 600 400.540	R183	- 81 015.580	3 601 645.800
L184	- 78 364.310	3 600 344.570	R184	- 80 952.830	3 601 625.740
L185	- 78 309.610	3 600 284.430	R185	- 80 889.890	3 601 607.300
L186	- 78 276.800	3 600 246.480	R186	- 80 837.170	3 601 593.260
L187	- 78 130.170	3 600 084.040	R187	- 80 773.890	3 601 577.370
L188	- 78 048.790	3 599 994.150	R188	- 80 720.590	3 601 562.100
L189	- 77 993.120	3 599 913.570	R189	- 80 656.080	3 601 552.110
L190	- 77 943.910	3 599 827.400	R190	- 80 602.170	3 601 542.200
L191	- 77 912.340	3 599 734.360	R191	- 80 534.970	3 601 531.530
L192	- 77 890.450	3 599 637.920	R192	- 80 469.980	3 601 522.360
L193	- 77 880.350	3 599 540.430	R193	- 80 417.140	3 601 516.030
L194	- 77 887.460	3 599 441.510	R194	- 80 320.550	3 601 507.310
L195	- 77 894.690	3 599 370.170	R195	- 80 220.580	3 601 501.610
L196	- 77 915.280	3 599 250.770	R196	- 80 158.220	3 601 500.060
L197	- 77 923.070	3 599 164.040	R197	- 80 102.490	3 601 499.370
L198	- 77 921.030	3 599 078.840	R198	- 80 051.310	3 601 499.620
L199	- 77 909.810	3 599 002.800	R199	- 79 985.780	3 601 501.470
L200	- 77 891.340	3 598 909.150	R200	- 79 920.340	3 601 504.800
L201	- 77 860.070	3 598 828.480	R201	- 79 865.050	3 601 508.540
L202	- 77 820.680	3 598 751.790	R202	- 79 712.360	3 601 523.160
L203	- 77 613.010	3 598 364.360	R203	- 79 579.690	3 601 539.180
L204	- 77 391.220	3 597 963.790	R204	- 79 421.180	3 601 567.970

Vel	18	Van	25	P575/06
Sheet		of		

LINKERKANT/LEFT HAND SIDE			REGTERKANT/RIGHT HAND SIDE		
	Y	X	WG 25	Y	X
L205	- 76 721.940	3 596 753.310	R205	- 79 332.830	3 601 558.500
L206	- 76 696.680	3 596 692.980	R206	- 79 263.160	3 601 546.210
L207	- 76 680.090	3 596 641.190	R207	- 79 202.200	3 601 507.140
L208	- 76 667.310	3 596 577.260	R208	- 79 153.090	3 601 479.400
L209	- 76 661.060	3 596 522.970	R209	- 79 127.840	3 601 446.120
L210	- 76 661.090	3 596 457.760	R210	- 79 114.880	3 601 404.930
L211	- 76 664.610	3 596 414.380	R211	- 79 112.320	3 601 365.390
L212	- 76 737.480	3 595 831.400	R212	- 79 114.610	3 601 302.420
L213	- 76 771.110	3 595 556.390	R213	- 79 128.350	3 601 133.220
L214	- 76 776.900	3 595 489.970	R214	- 79 143.060	3 600 949.430
L215	- 76 777.340	3 595 458.050	R215	- 79 143.970	3 600 890.030
L216	- 76 776.290	3 595 402.960	R216	- 79 135.140	3 600 812.330
L217	- 76 773.670	3 595 364.610	R217	- 79 113.450	3 600 746.770
L218	- 76 765.930	3 595 304.220	R218	- 79 076.810	3 600 685.700
L219	- 76 753.440	3 595 241.010	R219	- 79 032.660	3 600 630.990
L220	- 76 747.520	3 595 217.990	R220	- 78 977.700	3 600 585.800
L221	- 76 737.438	3 595 179.034	R221	- 78 916.580	3 600 551.840
L222	- 76 733.520	3 595 163.490	R222	- 78 787.490	3 600 507.020
L223	- 76 730.920	3 595 153.410	R223	- 78 578.410	3 600 434.380
L224	- 76 721.870	3 595 138.320	R224	- 78 517.910	3 600 408.430
L225	- 76 704.020	3 595 091.190	R225	- 78 462.090	3 600 375.040
L226	- 76 681.710	3 595 044.070	R226	- 78 415.260	3 600 333.950
L227	- 76 651.500	3 594 987.960	R227	- 78 288.430	3 600 203.280
L228	- 76 621.910	3 594 940.580	R228	- 78 259.240	3 600 166.320
L229	- 76 586.470	3 594 892.050	R229	- 78 215.740	3 600 121.770
L230	- 76 539.420	3 594 836.200	R230	- 78 130.640	3 600 025.670
L231	- 74 909.020	3 593 031.670	R231	- 78 071.660	3 599 956.450
L232	- 74 105.510	3 592 142.380	R232	- 78 018.610	3 599 881.590
L233	- 74 036.120	3 592 065.610	R233	- 77 977.650	3 599 799.460
L234	- 73 935.170	3 591 950.630	R234	- 77 948.330	3 599 712.320
L235	- 73 872.900	3 591 875.640	R235	- 77 930.900	3 599 622.250
L236	- 73 817.470	3 591 806.080	R236	- 77 925.360	3 599 531.150
L237	- 73 750.090	3 591 717.930	R237	- 77 926.720	3 599 440.420
L238	- 72 797.800	3 590 419.120	R238	- 77 953.610	3 599 261.680
L239	- 72 638.900	3 590 202.560	R239	- 77 961.930	3 599 171.870
L240	- 72 356.980	3 589 818.210	R240	- 77 961.260	3 599 080.930
L241	- 72 234.040	3 589 651.720	R241	- 77 950.220	3 598 991.240
L242	- 71 842.220	3 589 115.030	R242	- 77 929.490	3 598 903.240
L243	- 71 788.110	3 589 024.380	R243	- 77 898.970	3 598 817.800
L244	- 71 763.210	3 588 975.930	R244	- 77 854.490	3 598 739.480
L245	- 71 723.280	3 588 885.430	R245	- 77 556.330	3 598 196.840
L246	- 71 704.090	3 588 834.110	R246	- 77 519.160	3 598 130.180
L247	- 71 685.00	3 588 770.810	R247	- 76 775.640	3 596 786.700
L248	- 71 379.650	3 587 711.830	R248	- 76 736.700	3 596 709.860
L249	- 71 287.630	3 587 393.940	R249	- 76 717.910	3 596 657.590
L250	- 71 198.690	3 587 086.860	R250	- 76 703.990	3 596 604.530
L251	- 71 084.070	3 586 691.190	R251	- 76 694.540	3 596 539.590
L252	- 70 732.640	3 585 470.810	R252	- 76 691.630	3 596 485.450
L253	- 70 510.280	3 584 698.530	R253	- 76 694.420	3 596 430.660
L254	- 70 484.310	3 584 608.470	R254	- 76 767.140	3 595 844.370
L255	- 70 466.090	3 584 540.340	R255	- 76 800.960	3 595 567.610

Sheet of

00000000

LINKERKANT/LEFT HAND SIDE			REGTERKANT/RIGHT HAND SIDE			
	Y	X	WG 25	Y	X	
L256	• 70 438.190	3 584 421.870	R256	• 76 806.970	3 595 501.450	
L257	- 70 423.900	3 584 350.820	R257	• 76 808.330	3 595 456.680	
L258	- 70 281.630	3 583 601.970	R258	- 76 807.110	3 595 402.700	
L259	• 70 264.480	3 583 518.830	R259	• 76 804.530	3 595 362.190	
L260	- 70 263.550	3 583 491.720	R260	- 76 794.440	3 595 288.930	
L261	- 70 260.880	3 583 422.880	R261	- 76 781.690	3 595 226.290	
L262	• 70 260.800	3 583 403.540	R262	• 76 778.130	3 595 215.090	
L263	- 70 260.880	3 583 218.400	R263	- 76 765.210	3 595 172.090	
L264	- 70 259.270	3 583 144.900	R264	• 76 760.300	3 595 155.610	
L265	- 70 264.380	3 583 082.760	R265	- 76 758.020	3 595 148.160	
L266	- 70 279.380	3 582 982.150	R266	• 76 733.280	3 595 080.280	
L267	• 70 299.490	3 582 862.270	R267	- 76 710.420	3 595 031.330	
L268	- 70 317.050	3 582 754.900	R268	- 76 679.200	3 594 973.740	
L269	- 70 324.860	3 582 686.540	R269	- 76 644.570	3 594 918.120	
L270	• 70 326.700	3 582 626.800	R270	- 76 612.310	3 594 873.700	
L271	• 70 326.730	3 582 573.180	R271	- 74 907.860	3 592 983.270	
L272	- 70 325.090	3 582 527.980	R272	- 74 132.640	3 592 126.620	
L273	- 70 321.780	3 582 484.890	R273	- 73 995.960	3 591 973.460	
L274	- 70 312.860	3 582 411.780	R274	- 73 948.290	3 591 915.740	
L275	- 70 301.740	3 582 339.090	R275	- 73 876.760	3 591 830.980	
L276	- 70 184.990	3 581 575.090	R276	- 73 835.080	3 591 777.900	
L277	- 70 171.730	3 581 487.540	R277	• 73 803.030	3 591 736.410	
L278	- 70 103.390	3 581 047.660	R278	- 72 816.110	3 590 391.280	
L279	- 70 054.100	3 580 726.090	R279	- 72 660.070	3 590 186.490	
L280	• 70 045.800	3 580 650.310	R280	• 72 376.840	3 589 792.550	
L281	- 70 041.580	3 580 596.210	R281	- 72 270.260	3 589 646.850	
L282	• 70 038.710	3 580 532.490	R282	- 71 873.660	3 589 105.600	
L283	- 70 037.120	3 580 492.730	R283	- 71 817.200	3 589 012.620	
L284	- 70 038.010	3 580 438.180	R284	• 71 787.260	3 588 953.810	
L285	- 70 040.560	3 580 377.380	R285	- 71 752.00	3 588 873.140	
L286	- 70 044.870	3 580 316.750	R286	- 71 731.660	3 588 819.430	
L287	- 70 051.490	3 580 256.320	R287	- 71 536.370	3 588 138.960	
L288	- 70 115.250	3 579 757.430	R288	- 71 332.00	3 587 433.970	
L289	- 70 142.220	3 579 548.340	R289	- 71 223.810	3 587 060.310	
L290	• 70 163.490	3 579 383.390	R290	- 71 115.600	3 586 686.550	
L291	• 70 230.650	3 578 862.550	R291	- 70 951.020	3 586 116.780	
L292	- 70 283.550	3 578 452.260	R292	- 70 767.960	3 585 479.110	
L293	- 70 331.310	3 578 081.810	R293	- 70 541.980	3 584 694.430	
L294	- 70 333.600	3 577 968.540	R294	- 70 513.280	3 584 594.400	
L295	- 70 330.850	3 577 907.240	R295	- 70 474.220	3 584 440.040	
L296	- 70 318.030	3 577 829.110	R296	- 70 458.850	3 584 364.920	
L297	- 70 314.620	3 577 825.310	R297	- 70 442.700	3 584 281.440	
L298	- 70 292.280	3 577 729.810	R298	• 70 420.600	3 584 162.780	
L299	- 70 271.630	3 577 672.520	R299	- 70 392.730	3 584 018.220	
L300	- 70 263.270	3 577 651.820	R300	• 70 310.630	3 583 591.800	
L301	- 70 238.720	3 577 597.950	R301	- 70 293.980	3 583 531.650	
L302	- 70 210.960	3 577 545.900	R302	- 70 288.380	3 583 470.870	
L303	- 70 175.640	3 577 490.460	R303	- 70 285.640	3 583 403.970	
L304	• 70 156.800	3 577 463.370	R304	- 70 280.240	3 583 271.760	
L305	• 70 119.850	3 577 417.210	R305	• 70 278.720	3 583 228.110	
L306	- 70 080.170	3 577 373.130	R306	- 70 278.750	3 583 184.240	
			Vel	20	Van 25	P575/06

PADRESERWEKOÖRDINATE / ROAD RESERVE CO-ORDINATES

LINKERKANT/LEFT HAND SIDE			REGTERKANT/RIGHT HAND SIDE		
	Y	X	WG 25	Y	X
L307	-70006.110	3 577 298.540	R307	- 70 284.040	3 583 118.660
L308	- 69 772.939	3 577 064.399	R308	- 70 304.620	3 583 023.400
L309	- 69 722.618	3 577 013.869	R309	- 70 317.160	3 582 947.860
L310	- 69 633.440	3 576 924.320	R310	- 70 330.580	3 582 866.530
L311	- 69 569.160	3 576 846.780	R311	- 70 344.010	3 582 785.300
L312	- 69 534.780	3 576 797.000	R312	- 70 351.540	3 582 731.230
L313	- 69 512.380	3 576 759.430	R313	- 70 355.250	3 582 685.950
L314	- 69 456.090	3 576 658.120	R314	- 70 357.960	3 582 636.520
L315	- 69 269.860	3 576 223.870	R315	- 70 358.870	3 582 603.320
L316	- 69 214.620	3 576 095.340	R316	- 70 357.880	3 582 548.640
L317	- 69 198.380	3 576 055.220	R317	- 70 353.380	3 582 483.010
L318	- 69 171.800	3 575 979.460	R318	- 70 343.140	3 582 403.180
L319	- 69 167.390	3 575 958.840	R319	- 70 330.370	3 582 319.000
L320	- 69 087.330	3 575 744.310	R320	- 70 314.660	3 582 212.050
L321	- 69 045.600	3 575 592.730	R321	- 70 208.480	3 581 527.320
L322	- 69 018.240	3 575 462.600	R322	- 70 201.610	3 581 482.710
L323	- 68 985.670	3 575 266.120	R323	- 70 133.870	3 581 039.270
L324	- 68 862.170	3 574 795.140	R324	- 70 084.590	3 580 714.980
L325	- 68 785.550	3 574 501.520	R325	- 70 077.410	3 580 650.160
L326	- 68 751.540	3 574 370.370	R326	- 70 074.750	3 580 618.190
L327	- 68 732.190	3 574 296.270	R327	- 70 070.00	3 580 528.870
L328	- 68 714.220	3 574 222.280	R328	- 70 069.520	3 580 446.980
L329	- 68 702.300	3 574 160.250	R329	- 70 071.940	3 580 379.500
L330	- 68 685.180	3 574 058.940	R330	- 70 076.340	3 580 319.070
L331	- 68 666.710	3 573 950.300	R331	- 70 081.700	3 580 266.120
L332	- 68 571.760	3 573 393.120	R332	- 70 146.120	3 579 762.630
L333	- 68 537.310	3 573 183.880	R333	- 70 172.710	3 579 556.770
L334	- 68 483.310	3 572 822.370	R334	- 70 208.420	3 579 280.360
L335	- 68 474.400	3 572 821.530	R335	- 70 225.650	3 579 208.460
L336	- 68 470.080	3 572 712.660	R336	- 70 260.980	3 579 046.450
L337	- 68 469.250	3 572 665.070	R337	- 70 282.410	3 578 873.040
L338	- 68 469.000	3 572 553.900	R338	- 70 306.580	3 578 531.900
L339	- 68 470.710	3 572 481.650	R339	- 70 351.510	3 578 202.860
L340	- 68 484.500	3 572 400.080	R340	- 70 361.750	3 578 114.750
L341	- 68 494.240	3 572 330.070	R341	- 70 365.200	3 578 032.620
L342	- 68 506.400	3 572 256.150	R342	- 70 365.120	3 577 970.090
L343	- 68 548.880	3 572 009.430	R343	- 70 362.330	3 577 904.430
L344	- 68 568.170	3 571 917.320	R344	- 70 344.870	3 577 824.940
L345	- 68 670.730	3 571 496.400	R345	- 70 326.020	3 577 739.140
L346	- 68 678.590	3 571 461.130	R346	- 70 305.930	3 577 673.170
L347	- 68 740.380	3 571 183.710	R347	- 70 265.520	3 577 581.480
L348	- 68 755.060	3 571 100.520	R348	- 70 237.040	3 577 529.370
L349	- 68 763.320	3 571 050.120	R349	- 70 206.330	3 577 480.190
L350	- 68 765.910	3 571 034.120	R350	- 70 181.910	3 577 445.330
L351	- 68 775.300	3 570 923.450	R351	- 70 144.830	3 577 398.930
L352	- 68 779.520	3 570 831.250	R352	- 70 105.620	3 577 354.990
L353	- 68 778.920	3 570 743.700	R353	- 70 024.270	3 577 272.110
L354	- 68 773.050	3 570 614.460	R354	- 69 800.420	3 577 048.120
L355	- 68 751.870	3 570 078.470	R355	- 69 743.843	3 576 991.821
L356	- 68 740.500	3 569 799.040	R356	- 69 678.170	3 576 926.470
L357	- 68 735.560	3 569 710.050	R357	- 69 638.240	3 576 882.780

0000000000

Sheet of

LINKERKANT/LEFT HAND SIDE			REGTERKANT/RIGHT HAND SIDE		
	Y			Y	X
L358	- 68 730.550	3 569 619.070	R358	- 69 619.630	3 576 860.230
L359	- 68 717.670	3 569 533.040	R359	- 69 575.330	3 576 801.260
L360	- 68 670.290	3 569 368.000	R360	- 69 543.830	3 576 751.880
L361	- 68 610.600	3 569 145.720	R361	- 69 486.650	3 576 649.620
L362	- 68 536.520	3 568 910.370	R362	- 69 390.310	3 576 424.770
L363	- 68 395.920			- 69 300.360	3 576 216.570
L364	- 68 284.290			- 69 270.280	3 576 146.230
L365	- 68 260.370			- 69 277.150	3 576 128.680
L366	- 68 135.900			- 69 275.270	3 576 121.640
L367	- 68 035.010			- 69 251.510	3 575 958.210
L368	- 67 891.640			- 69 246.660	3 575 942.480
L369	- 67 850.290			- 69 203.660	3 575 952.490
L370	- 67 782.380			- 69 194.220	3 575 948.860
L371	- 67 671.090			- 69 183.870	3 575 909.140
L372	- 67 388.850			- 69 014.090	3 575 257.850
L373	- 67 225.270			- 68 897.770	3 574 813.210
L374	- 67 079.030			- 68 809.960	3 574 474.980
L375	- 66 966.260			- 68 780.180	3 574 363.870
L376	- 66 859.360			- 68 761.680	3 574 292.960
L377	- 66 768.270			- 68 744.230	3 574 217.220
L378	- 66 675.090			- 68 732.130	3 574 155.930
L379	- 66 580.190			- 68 715.830	3 574 060.990
L380	- 66 363.572			- 68 696.640	3 573 945.190
L381	- 66 266.452			- 68 601.280	3 573 384.100
L382	- 66 132.457			- 68 526.430	3 572 937.410
L383	- 65 071.492			- 68 511.400	3 572 837.340
L384	- 64 818.592			- 68 504.270	3 572 749.060
L385	- 64 783.250			- 68 502.120	3 572 690.120
L386	- 64 531.970			- 68 502.020	3 572 664.220
L387	- 64 469.700			- 68 501.550	3 572 544.460
L388	- 64 466.060			- 68 509.140	3 572 435.670
L389	- 64 221.720			- 68 514.830	3 572 378.290
L390	- 64 163.990			- 68 521.700	3 572 324.620
L391	- 64 180.750			- 68 536.730	3 572 237.670
L392	- 64 120.00			- 68 549.790	3 572 180.780
L393	- 64 021.070			- 68 588.830	3 572 005.440
L394	- 63 920.510			- 68 607.450	3 571 919.170
L395	- 63 888.520			- 68 711.990	3 571 458.560
L396	- 63 834.00			- 68 729.790	3 571 374.980
L397	- 63 788.970			- 68 768.490	3 571 197.390
L398	- 63 761.170			- 68 785.850	3 571 107.500
L399	- 63 743.100			- 68 798.530	3 571 016.150
L400	- 63 742.610			- 68 806.940	3 570 924.900
L401	- 63 754.160			- 68 810.190	3 570 831.510
L402	- 63 768.900			- 68 809.730	3 570 741.200
L403	- 63 772.930			- 68 809.350	3 570 731.760
L404	- 63 773.320			- 68 804.930	3 570 620.520
L405	- 63 764.680			- 68 796.140	3 570 399.270
L406	- 63 732.460			- 68 779.740	3 569 981.860
L407	- 63 724.420			- 68 771.310	3 569 786.220
L408	- 63 688.210			- 68 767.410	3 569 720.560

Van	22	Van	25	P575/06
Sheet		of		

PADRESERWE KOÖRDINATE / ROAD RESERVE CO-ORDINATES

LINKERKANT/LEFT HAND SIDE			REGTERKANT/RIGHT HAND SIDE		
	Y	X	WG 25	Y	X
L409	- 63 694.410	3 564 121.160	R409	- 68 761.070	3 569 613.790
L410	- 63 625.340	3 563 921.910	R410	- 68 747.330	3 569 522.770
L411	- 63 597.670	3 563 855.370	R411	- 68 744.210	3 569 505.020
L412	- 63 568.240	3 563 793.620	R412	- 68 730.470	3 569 432.870
L413	- 63 530.580	3 563 729.490	R413	- 68 709.590	3 569 356.820
L414	- 63 505.020	3 563 685.760	R414	- 68 570.900	3 568 912.050
L415	- 63 426.960	3 563 581.980	R415	- 68 555.370	3 568 861.430
L416	- 63 299.820	3 563 445.380	R416	- 68 426.760	3 568 454.580
L417	- 63 186.810	3 563 337.350	R417	- 68 292.640	3 568 019.640
L418	- 63 045.760	3 563 196.180	R418	- 68 189.250	3 567 684.110
L419	-62678.110	3 562 827.380	R419	- 68 159.430	3 567 603.050
L420	- 62 359.140	3 562 527.880	R420	- 68 099.960	3 567 464.270
L421	- 62 157.060	3 562 400.380	R421	- 68 052.340	3 567 373.270
L422	- 62 078.040	3 562 357.320	R422	- 67 996.040	3 567 282.890
L423	- 61 901.370	3 562 294.310	R423	- 67 976.560	3 567 245.470
L424	- 61 524.480	3 562 145.330	R424	- 67 917.040	3 567 176.180
L425	- 61 291.980	3 562 053.950	R425	- 67 867.220	3 567 127.850
L426	- 61 049.610	3 561 958.600	R426	- 67 818.100	3 567 080.980
L427	- 60 865.660	3561 885.750	R427	- 67 688.880	3 566 964.160
L428	- 60 426.880	3 561 713.850	R428	- 67 405.900	3 566 709.060
L429	- 59 965.850	3 561 532.870	R429	- 67 255.920	3 566 573.860
L430	- 59 732.00	3 561 441.230	R430	- 67 200.600	3 566 528.120
L431	- 59 505.420	3 561 338.730	R431	- 67 105.700	3 566 456.730
L432	- 59 229.590	3 561 230.390	R432	- 67 055.160	3 566 423.140
L433	- 58 901.370	3561 101.050	R433	- 66 774.490	3 566 285.710
L434	- 58 879.650	3561 091.590	R434	- 66 689.830	3 566 256.740
L435	- 58 857.180	3 561 079.500	R435	- 66 592.020	3 566 229.670
L436	- 58 836.940	3 561 066.150	R436	- 66 374.776	3 566 179.577
L437	- 58 815.280	3 561 047.400	R437	- 66 290.492	3 566 160.142
L438	- 58 795.560	3 561 025.360	R438	- 66 143.657	3 566 126.284
L439	- 58 763.720	3 560 978.880	R439	- 65 082.675	3 565 881.636
L440	- 58 688.110	3 560 796.970	R440	- 64 960.244	3 565 853.405
L441	- 58 685.480	3 560 793.760	R441	- 64 824.610	3 565 822.130
L442	- 58 679.370	3 560 794.260	R442	- 64 615.540	3 565 773.940
L443	- 58 459.130	3 560 881.430	R443	- 64 578.440	3 565 753.690
L444	- 58 429.970	3 560 892.760	R444	- 64 519.240	3 565 753.330
L445	- 58 399.600	3 560 908.300	R445	- 64 496.170	3 565 753.190
L446	- 58 370.710	3 560 922.820	R446	- 64 366.510	3 565 729.300
L447	- 58 349.770	3 560 928.350	R447	- 64 287.680	3 565 709.560
L448	- 58 287.260	3 560 960.070	R448	- 64 259.660	3 565 700.250
L449	- 58 272.640	3 560 969.260	R449	- 64 260.970	3 565 690.750
L450	- 58 208.170	3 560 837.240	R450	- 64 245.240	3 565 688.960
L451	- 58 185.670	3 560 799.410	R451	- 64 218.590	3 565 675.220
L452	- 58 127.100	3 560 608.280	R452	- 64 199.240	3 565 665.220
L453	- 58 122.240	3 560 584.510	R453	- 64 198.140	3 565 666.200
L454	- 58 077.750	3 560 338.120	R454	- 64 168.270	3 565 651.150
L455	- 58 067.490	3 560 327.820	R455	- 64 116.790	3 565 619.950
L456	- 58 050.450	3 560 325.450	R456	- 64 057.790	3 565 581.860
L457	- 57 771.650	3 560 450.790	R457	- 63 997.710	3 565 529.890
L458	- 57 745.270	3 560 455.980	R458	- 63 939.610	3 565 466.250
L459	- 57 716.350	3 560 457.610	R459	- 63 918.330	3 565 441.280

Vel 23 Van 25 P575/06

U4JUUUUU

PADRESERWEKOÖRDINATE / ROAD RESERVE CO-ORDINATES						
LINKERKANT/LEFT HAND SIDE			REGTERKANT/RIGHT HAND SIDE			
	Y	X	WG 25	Y	X	
L460	- 57 716.740	3 560 459.660		R 460	- 63 860.430 3 565 354.040	
L461	- 57 690.604	3 560 457.671		R 461	- 63 816.470 3 565 256.620	
L462	- 57 657.490	3 560 451.890		R 462	- 63 791.780 3 565 174.240	
L463	- 57 621.210	3 560 441.280		R 463	- 63 776.350 3 565 084.850	
L464	- 57 621.730	3 560 439.130		R 464	- 63 774.390 3 564 965.890	
L465	- 57 608.130	3 560 433.730		R 465	- 63 785.420 3 564 805.080	
L466	- 57 567.179	3 560 415.748		R 466	- 63 797.170 3 564 593.210	
				R 467	- 63 804.280 3 564 464.870	
				R 468	- 63 798.290 3 564 370.330	
				R 469	- 63 778.140 3 564 274.830	
				R 470	- 63 758.970 3 564 217.090	
				R 471	- 63 742.920 3 564 190.500	
				R 472	- 63 732.020 3 564 135.120	
				R 473	- 63 656.720 3 563 914.450	
				R 474	- 63 623.850 3 563 802.100	
				R 475	- 63 594.790 3 563 776.090	
				R 476	- 63 576.470 3 563 742.640	
				R 477	- 63 531.710 3 563 668.660	
				R 478	- 63 435.170 3 563 538.850	
				R 479	- 63 322.730 3 563 423.250	
				R 480	- 63 225.980 3 563 326.310	
				R 481	- 62 901.030 3 563 001.690	
				R 482	- 62 649.280 3 562 749.480	
				R 483	- 62 541.510 3 562 641.460	
				R 484	- 62 505.780 3 562 599.800	
				R 485	- 62 471.120 3 562 564.070	
				R 486	- 62 417.530 3 562 522.120	
				R 487	- 62 385.080 3 562 496.770	
				R 488	- 62 351.610 3 562 476.170	
				R 489	- 62 297.410 3 562 438.960	
				R 490	- 62 189.310 3 562 377.310	
				R 491	- 62 087.780 3 562 332.120	
				R 492	- 61 861.910 3 562 243.220	
				R 493	- 61 534.250 3 562 114.040	
				R 494	- 61 365.100 3 562 047.720	
				R 495	- 61 295.680 3 562 020.480	
				R 496	- 60 993.430 3 561 901.930	
				R 497	- 60 874.020 3 561 854.980	
				R 498	- 60 660.400 3 561 771.260	
				R 499	- 60 440.340 3 561 684.480	
				R 500	- 59 975.190 3 561 502.040	
				R 501	- 59 799.400 3 561 433.520	
				R 502	- 59 745.430 3 561 412.570	
				R 503	- 59 741.780 3 561 424.230	
				R 504	- 59 507.820 3 561 332.080	
				R 505	- 59 232.040 3 561 224.010	
				R 506	- 58 904.660 3 561 095.160	
				R 507	- 58 883.530 3 561 085.600	
				R 508	- 58 861.490 3 561 073.950	
				R 509	- 58 841.250 3 561 060.330	
				R 510	- 58 821.850 3 561 043.600	
				Vel 24	Van 25	P575/06
				Sheet	of	

LINKERKANT/LEFT HAND SIDE			REGTERKANT/RIGHT HAND SIDE		
Y	X	WG 25	Y	X	
		R511	- 58 804.060	3 561 020.460	
		R512	- 58 787.060	3 560 993.780	
		R513	- 58 704.670	3 560 786.970	
		R514	- 58 699.740	3 560 767.000	
		R515	- 58 676.870	3 560 774.190	
		R516	- 58 449.760	3 560 864.240	
		R517	- 58 423.370	3 560 876.150	
		R518	- 58 360.980	3 560 906.850	
		R519	- 58 296.170	3 560 931.990	
		R520	- 58 276.890	3 560 931.470	
		R521	- 58 267.640	3 560 922.610	
		R522	- 58 202.530	3 560 786.750	
		R523	- 58 193.030	3 560 753.400	
		R524	- 58 146.820	3 560 604.680	
		R525	- 58 139.370	3 560 580.720	
		R526	- 58 096.350	3 560 330.330	
		R527	- 58 073.950	3 560 301.260	
		R528	- 58 051.370	3 560 311.040	
		R529	- 57 799.070	3 560 429.160	
		3530	- 57 768.860	3 560 442.060	
		3531	- 57 743.900	3 560 447.850	
		R532	- 57 712.680	3 560 448.980	
		1533	- 57 712.880	3 560 446.600	
		1534	- 57 680.670	3 560 443.400	
		1535	- 57 645.040	3 560 435.560	
		1536	- 57 621.080	3 560 427.670	
		3537	- 57 619.900	3 560 429.280	
		1538	- 57 603.260	3 560 422.200	
		3539	- 57 570.733	3 560 407.749	
			Vel 25	Van 25	P575/06
			Sheet	of	