
GOVERNMENT NOTICE
GOEWERMENTSKENNISGEWING

DEPARTMENT OF TRANSPORT
DEPARTEMENT VAN VERVOER

No. 439

12 May 2006

THE SOUTH AFRICAN NATIONAL ROADS
AGENCY LIMITED

DECLARATION OF ROUTE N17 SECTION 1

By virtue of powers vested in me by section 40(1)(a) of the South African National Roads Agency Limited and National Roads Act, 1998 (Act No 7 of 1998), I hereby declare the route, as indicated on the subjoined plan P553/05, sheets 1 to 5, to be a National Road.

(National Road N17 SECTION 1 : Soweto - Nasrec Road)


MINISTER OF TRANSPORT

No. 439

12 Mei 2006

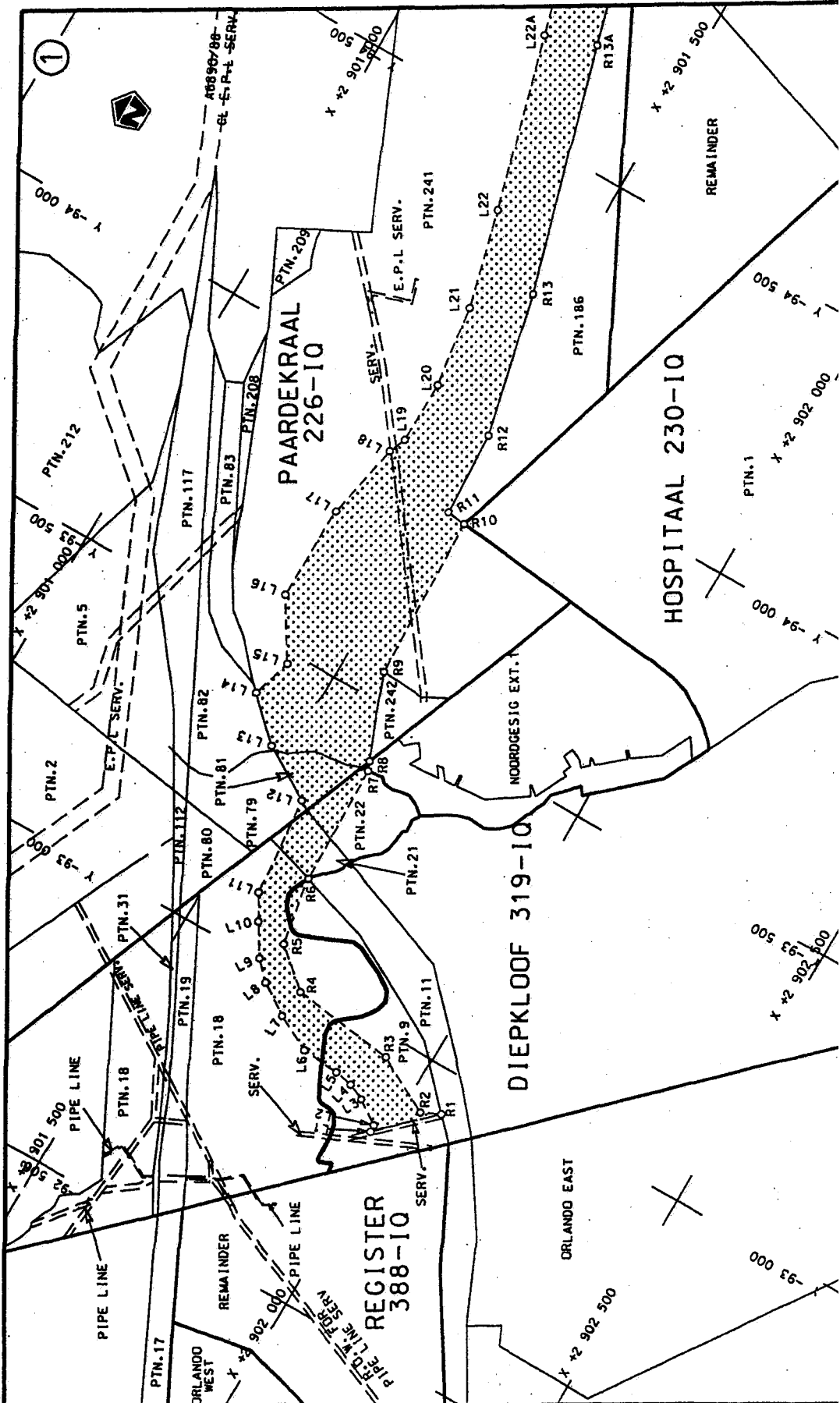
DIE SUID-AFRIKAANSE NASIONALE
PADAGENTS KAP BEPERK

VERKLARING VAN ROETE N17 SEKSIE 1

Kragtens die bevoegdheid aan my verleen in terme van artikel 40 (1)(a) van die Suid Afrikaanse Nasionale Padagentskap Bepark en Nasionale Paaie Wet (Wet No. 7 van 1998), verklaar ek hiermee die roete soos aangedui op die hierby aangehegte plan P553/05, velle 1 tot 5 as Nasionale Pad.

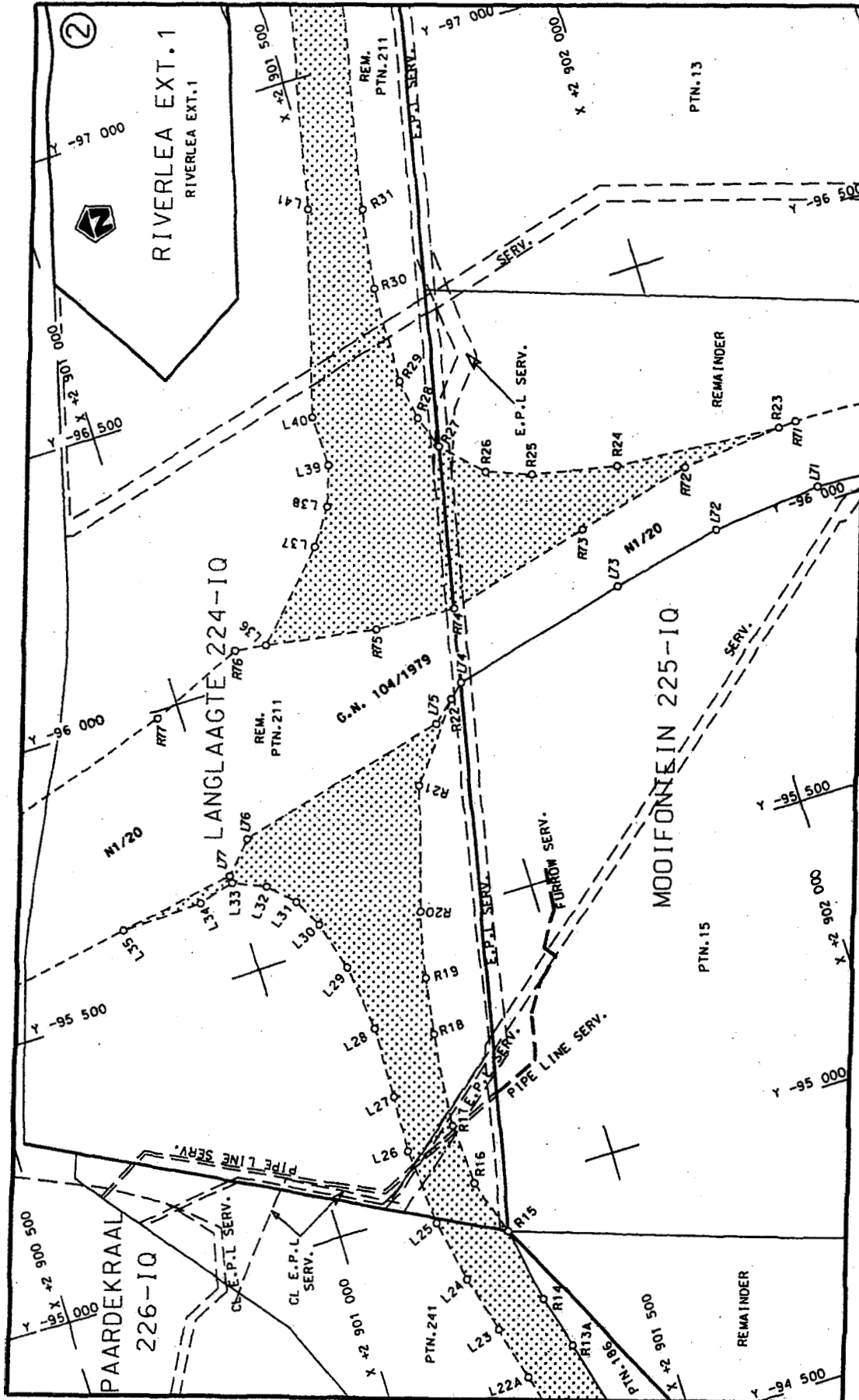
(Nasionale Pad N17 Seksie 1: Soweto - Nasrec pad)


MINISTER VAN VERVOER

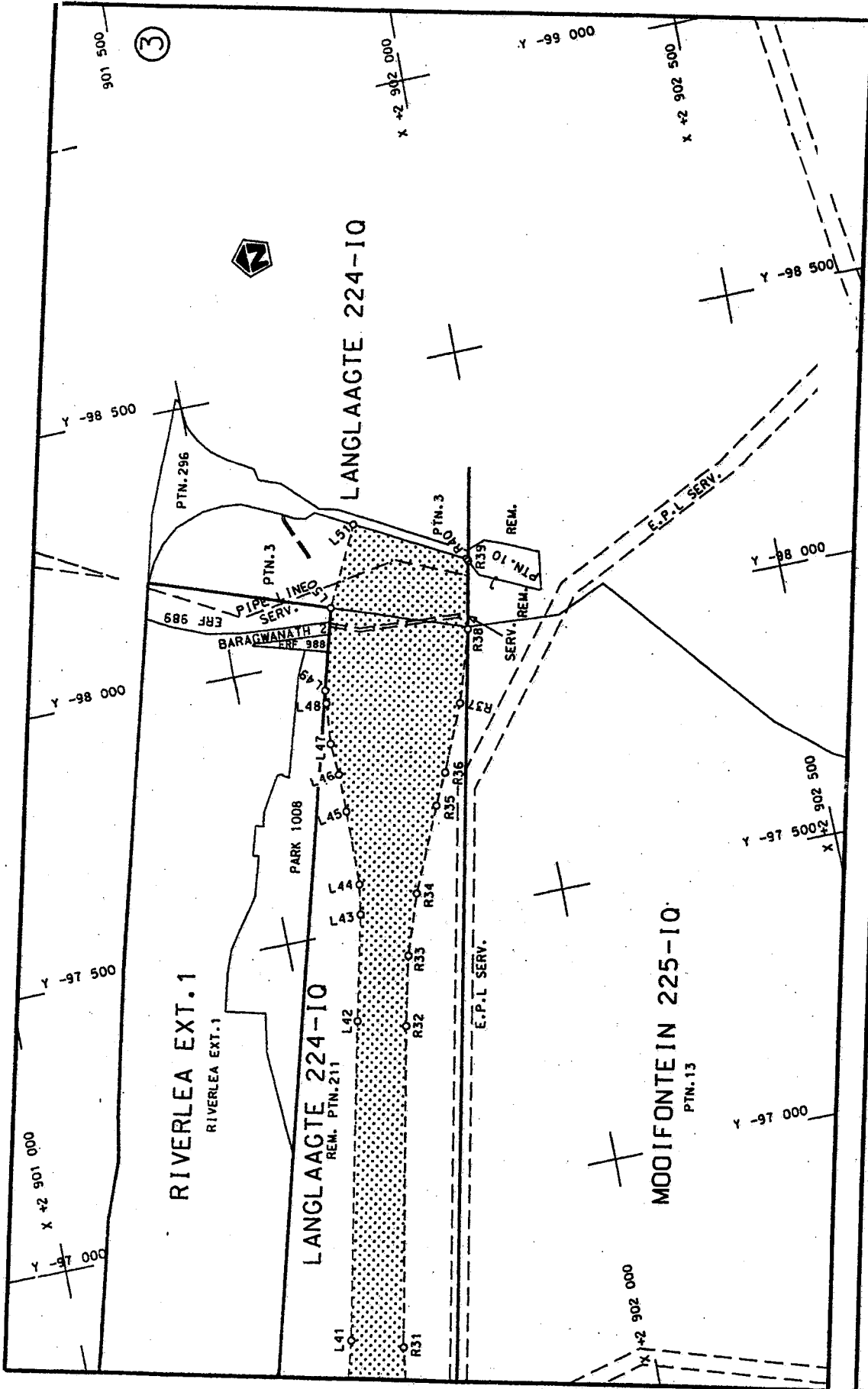


<p>Die Suid Afrikaanse Nasionale Pedagogieskap Beperk The South African National Roads Agency Limited</p>	<p>Die figuur getoon The figure shown</p>	<p>steldi padreserwe voor van 'n gedeelte represents the road reserve of a portion van Nasionale Roete N17 Sektie of National Route Section</p>	<p>van Sheet 1 of 5 Plan P 533/05</p>
---	---	---	---

D.O.9.A



<p>Die Suid-Afrikaanse Nasionale Padagentskap Bepoort The South African National Roads Agency Limited</p>	<p>Die figuur getoon The figure shown</p>	<p>steil die padreserwe voor van 'n gedeelte represents the road reserve of a portion van Nasionale Roete N17 Sektie of National Route N17 Section</p>	<p>Vol Sheet 2 of 5 Plan P 533/05</p>
<p>1</p>			<p>D.O.9.A</p>



<p>Die Suid Afrikaanse Nasionale Padagentskap Beperk The South African National Roads Agency Limited</p>	<p>Die figuur getoon The figure shown</p>	<p>represente die pad reserve van Nasionale Roete N17 van die gedeelte van die Nasionale Roete N17</p>	<p>Vel Sheet 3 of 5 Plan P 533/05</p>
--	---	--	---

D.O.9.A

PADRESERWE KOÖRDINATE / ROAD RESERVE CO-ORDINATES								
LINKERKANT/LEFT HAND SIDE				REGTERKANT/RIGHT HAND SIDE				
	Y	X	WG	27		Y	X	
L1	-92 835.44	2 901 973.46			R1	-92 925.84	2 902 064.36	
L2	-92 848.48	2 901 972.39			R2	-92 910.09	2 902 031.03	
L3	-92 877.42	2 901 929.56			R3	-92 962.69	2 901 927.03	
L4	-92 890.78	2 901 900.19			R4	-92 986.69	2 901 738.53	
L5	-92 897.05	2 901 867.13			R5	-93 045.69	2 901 670.53	
L6	-92 901.28	2 901 797.22			R6	-93 167.32	2 901 646.62	
L7	-92 934.44	2 901 732.51			R7	-93 386.18	2 901 639.42	
L8	-92 971.91	2 901 678.31			R8	-93 402.89	2 901 632.53	
L9	-93 003.62	2 901 647.07			R9	-93 551.69	2 901 571.54	
L10	-93 059.34	2 901 612.25			R10	-93 850.48	2 901 560.86	
L11	-93 104.69	2 901 586.03			R11	-93 854.44	2 901 525.39	
L12	-93 281.77	2 901 565.08			R12	-94 005.76	2 901 517.87	
L13	-93 341.77	2 901 470.09			R13	-94 260.56	2 901 459.01	
L14	-93 409.04	2 901 398.27			R14	-94 789.00	2 901 309.49	
L15	-93 480.18	2 901 417.54			R15	-94 921.18	2 901 286.72	
L16	-93 585.18	2 901 352.04			R16	-95 021.66	2 901 251.57	
L17	-93 757.07	2 901 352.04			R17	-95 130.16	2 901 245.57	
L18	-93 895.59	2 901 380.29			R18	-95 297.66	2 901 260.58	
L19	-93 926.17	2 901 393.55			R19	-95 397.16	2 901 275.58	
L20	-94 039.67	2 901 394.55			R20	-95 512.96	2 901 301.58	
L21	-94 183.67	2 901 374.05			R21	-95 730.16	2 901 366.08	
L22	-94 357.16	2 901 330.56			R22	-95 863.53	2 901 463.21	
L23	-94 760.16	2 901 218.57			R23	-96 149.57	2 902 155.80	
L24	-94 862.16	2 901 191.57			R24	-96 172.52	2 901 863.35	
L25	-94 973.66	2 901 169.57			R25	-96 204.16	2 901 715.09	
L26	-95 110.66	2 901 156.57			R26	-96 233.80	2 901 638.52	
L27	-95 211.16	2 901 163.07			R27	-96 301.87	2 903. 574.05	
L28	-95 338.16	2 901 165.08			R28	-96 361.18	2 901 553.21	
L29	-95 456.16	2 901 150.58			R29	-96 434.26	2 901 542.09	
L30	-95 545.16	2 901 126.58			R30	-96 604.95	2 901 548.16	
L31	-95 597.16	2 901 097.58			R31	-96 744.52	2 901 567.23	
L32	-95 638.16	2 901 055.08			R32	-97 311.99	2 901 681.27	
L33	-95 664.16	2 901 000.08			R33	-97 435.89	2 901 709.22	
L34	-95 645.16	2 900 935.08			R34	-97 544.80	2 901 745.31.	
L35	-95 639.42	2 900 794.53			R35	-97 695.02	2 901 811.17	
L36	-96 052.94	2 901 182.04			R36	-97 752.85	2 901 838.28	
L37	-96 197.10	2 901 314.65			R37	-97 871.67	2 901 888.63	
L38	-96 258.77	2 901 356.60			R38	-98 000.80	2 901 927.62	
L39	-96 328.66	2 901 380.09			R39	-98 123.98	2 901 952.72	
L40	-96 419.66	2 901 378.09			R40	-98 128.14	2 901 950.65	
L41	-96 775.16	2 901 476.10			R72	-96 133.24	2 901 977.25	
L42	-97 337.90	2 901 596.56			R73	-96 083.51	2 901 771.40	
L43	-97 527.33	2 901 638.46			R74	-96 017.34	2 901 515.46	
L44	-97 581.78	2 901 646.80			R75	-96 022.36	2 901 375.05	
L45	-97 717.53	2 901 649.05						
L46	-97 788.19	2 901 648.97						
L47	-97 845.80	2 901 645.29						
L48	-97 920.19	2 901 651.68						
L49	-97 943.68	2 901 653.70						
L50	-98 089.52	2 901 692.25						
L51	-98 230.85	2 901 760.82						
					Vel 4	Van 5	P553/05	
					Sheet	of		

LINKERKANT/LEFT HAND SIDE				REGTERKANT/RIGHT HAND SIDE				
L77	-95 677.37	2 900 999.44						
L76	-95 731.11	2 901 047.52						
L75	-95 828.73	2 901 425.10						
				Vel	5	Van	5	P553/03
				Sheet		of		