

---

GOVERNMENT NOTICE  
GOEWERMENSKENNISGEWING

---

DEPARTMENT OF TRANSPORT  
DEPARTEMENT VAN VERVOER

No. 438

12 May 2006

THE SOUTH AFRICAN NATIONAL ROADS AGENCY LIMITED

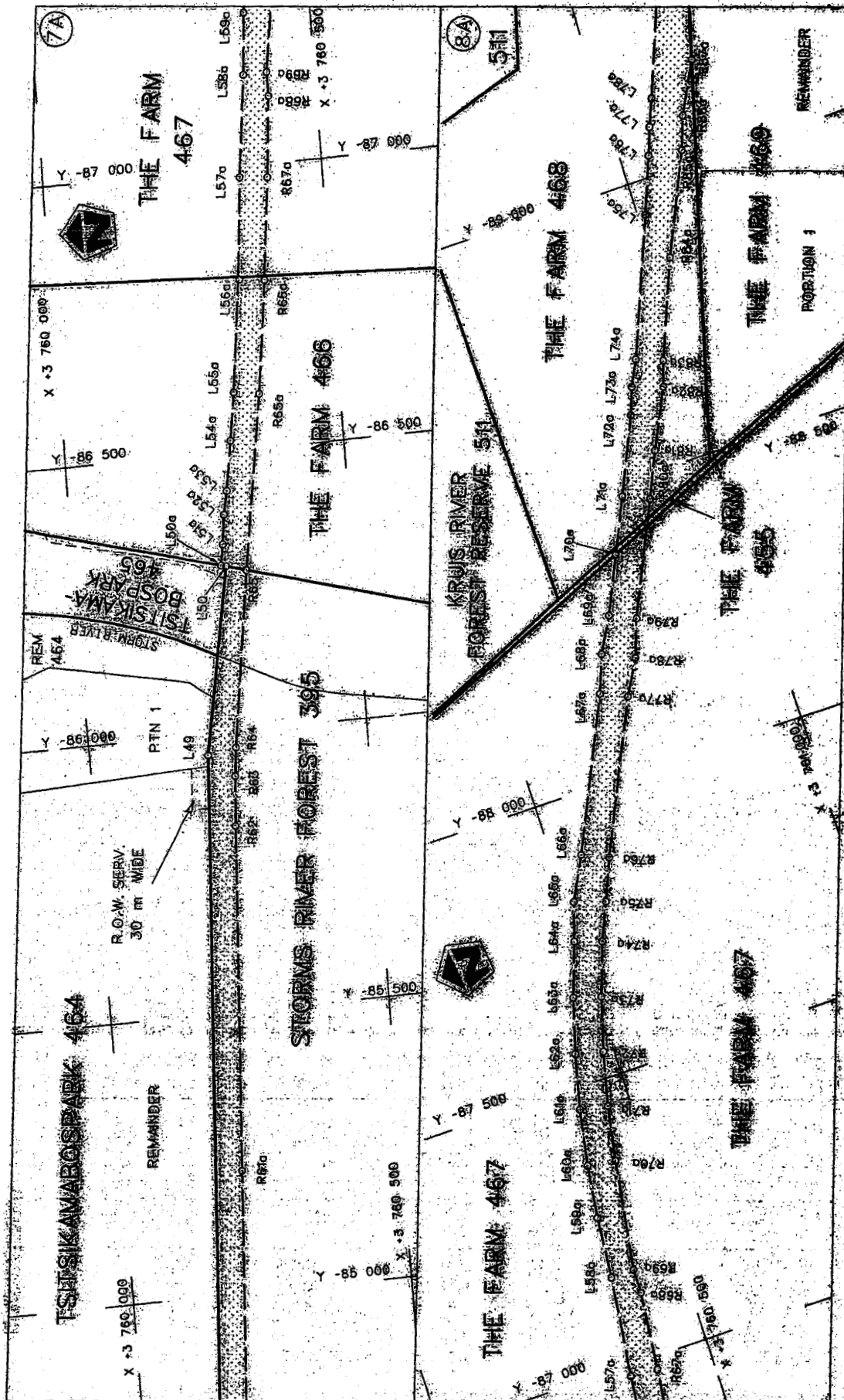
DECLARATION AMENDMENT OF N2 SECTION 9 BETWEEN TSITSIKAMA AND ELANDS RIVER

AMENDMENT OF DECLARATION NO. 467 OF 2004, A PORTION OF NATIONAL ROUTE 2, SECTION 9, EASTERN CAPE PROVINCE

By virtue of powers vested in me by section 40 (1) (b) of the South African National Roads Agency Limited and National Roads Act, 1998 (Act 7 of 1998), I hereby amend declaration No. 467 of 2004 by substituting the subjoined sheets 4B, 5B and 66 for sheets 4A, 5A and 6A of plan P370/88 and sheets 8B, 9B and 10B for sheets 8A, 9A and 10A respectively.

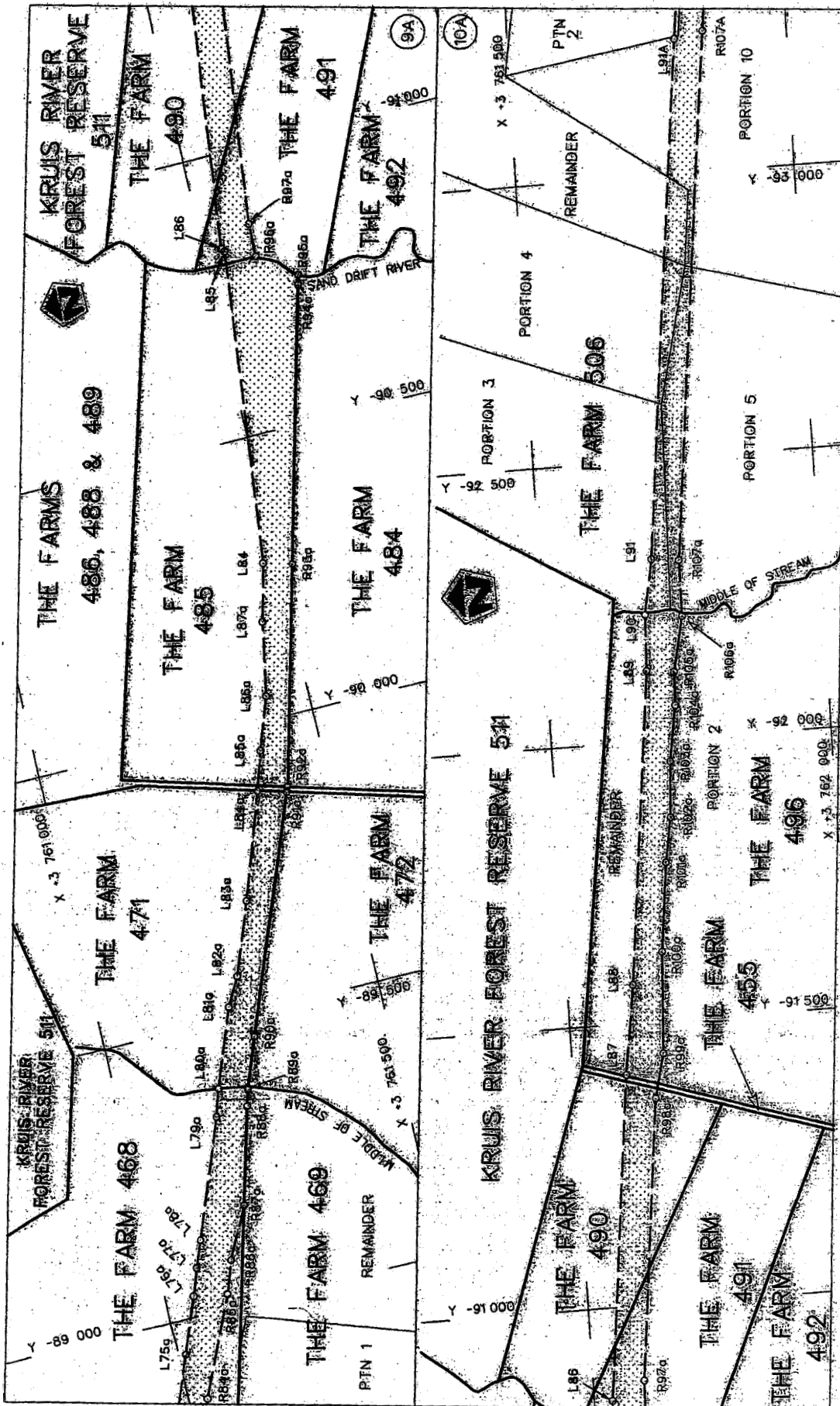
(National Route N2 Section 9: Elandsbos River – Elands River)

  
\_\_\_\_\_  
MR JT RADEBE, MP  
MINISTER OF TRANSPORT



<p>Die Suid-Afrikaanse Onroerende Sakekantoor se werke The South African National Roads Agency Limited</p>	<p>Die figuur getuig The figure shown</p>	<p>Staatse eienskapsreëls wat van toepassing is op die eiendom N2 Sekste Afdeling</p>	<p>Vol 45 van 10 Plan P 370/88</p>
--	---	---	--

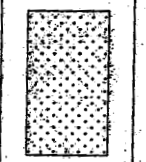
D.O.9.A



Die Suid Afrikaanse Nasionale Padgedigstelsel Bepaak  
 The South African National Roads Agency Limited

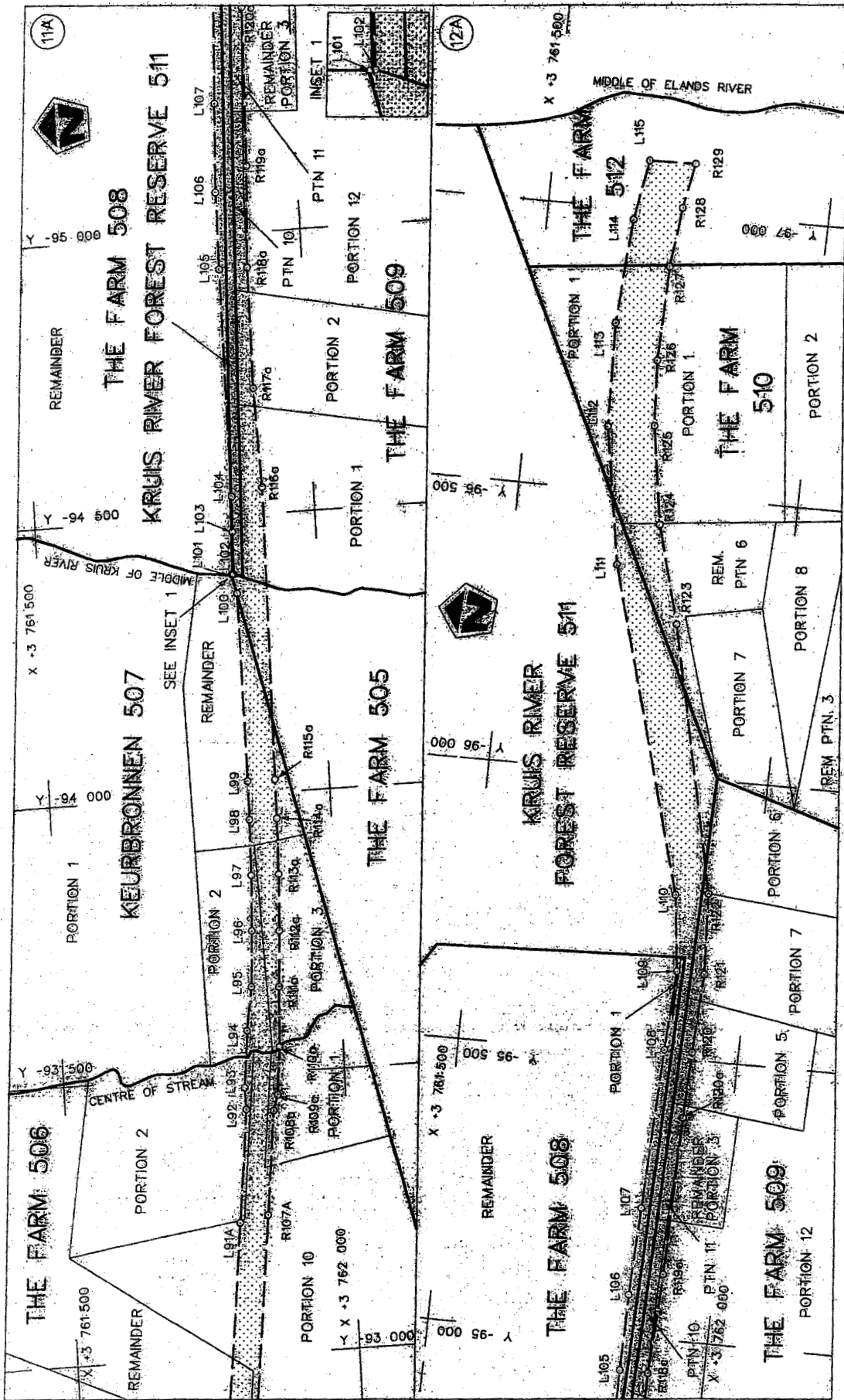
Die figuur getoon  
 The figure shown

stelsel, padgedigstelsel voor van 'n gedeelte  
 represents the road reserve of a portion  
 van Nasionale Route N2  
 of National Route Section



Val van 5B of 10  
 Plan P370/88

D.O.9.A



<p>Die Suid-Afrikaanse-Nasionale Padagentskap, Bedryk The South African National Roads Agency Limited</p>	<p>Die figuur getoon The figure shown</p>	<p>stelsel-adressering voor van 'n gedeelte represents the road reserve of a portion van Nasionale Route of National Route</p>	<p>N2 Seksie Section</p>	<p>9</p>
<p>Vel van Sheet 6B of 10</p>		<p>Plan P370/88</p>		

D.O.9.A

PADRESERWE KOORDINATE			ROAD RESERVE CO-ORDINATES		
LINKERKANT/LEFT HAND SIDE			REGTERKANT/RIGHT HAND SIDE		
Y	X	Lo 23°	Y	X	
L28	-79 964.94	3 759 916.11	R28	-76 601.56	3 760 634.84
L29	-80 030.39	3 759 878.51	R29	-76 701.44	3 760 627.84
L30	-80 100.03	3 759 844.24	R30	-76 780.26	3 760 613.30
L31	-80 203.47	3 759 810.09	R30A	-77 227.03	3 760 559.46
L32	-80 285.61	3 759 796.43	R31	-77 356.10	3 760 543.91
L33	-80 352.88	3 759 793.45	R32	-77 436.12	3 760 323.33
L34	-80 430.39	3 759 798.18	R33	-77 495.29	3 760 527.15
L35	-80 505.24	3 759 807.58	R34	-79 186.33	3 760 323.33
L36	-81 090.09	3 759 886.78	R35	-79 263.06	3 760 313.38
L37	-81 332.75	3 759 915.03	R36	-79 337.12	3 760 299.86
L38	-81 800.70	3 759 946.74	R37	-79 423.23	3 760 274.93
L39	-81 901.44	3 759 938.00	R38	-79 484.93	3 760 249.93
L40	-82 000.31	3 759 959.19	R39	-79 553.82	3 760 214.80
L41	-82 199.92	3 759 971.65	R40	-79 618.77	3 760 177.39
L42	-82 300.66	3 759 962.90	R40A	-79 696.38	3 760 131.81
L43	-82 399.84	3 759 979.11	R41	-79 990.26	3 759 959.22
L44	-82 691.28	3 759 997.30	R42	-80 054.19	3 759 922.54
L45	-82 701.22	3 759 966.36	R43	-80 119.69	3 759 890.20
L46	-82 722.42	3 759 947.84	R44	-80 214.54	3 759 858.85
L47	-82 788.59	3 759 951.97	R45	-80 290.10	3 759 846.22
L48	-82 768.95	3 760 008.99	R46	-80 352.09	3 759 843.44
L48A	-84 545.44	3 760 120.65	R47	-80 425.02	3 759 847.95
L49	-84 962.81	3 760 209.75	R48	-80 498.53	3 759 857.13
L50	-86 296.34	3 760 269.47	R49	-80 999.29	3 759 924.94
L50a	-86 298.82	3 760 260.72	R50	-81 082.71	3 759 941.28
L51a	-86 336.35	3 760 266.75	R51	-81 197.58	3 759 955.71
L52a	-86 389.45	3 760 273.37	R52	-81 397.59	3 759 975.52
L53a	-86 431.28	3 760 281.71	R53	-81 457.71	3 759 980.16
L54a	-86 519.13	3 760 295.65	R54	-81 516.32	3 759 984.10
L55a	-86 604.15	3 760 308.66	R55	-81 817.23	3 760 002.88
L56a	-86 802.36	3 760 335.37	R56	-81 896.14	3 760 022.83
L57a	-86 981.77	3 760 350.17	R57	-81 996.80	3 760 014.09
L58a	-87 160.57	3 760 371.20	R58	-82 097.00	3 760 015.32
L59a	-87 268.87	3 760 380.45	R59	-82 196.84	3 760 021.55
L60a	-87 363.32	3 760 392.78	R60	-82 275.41	3 760 046.50
L61a	-87 461.75	3 760 410.61	R61	-82 396.42	3 760 034.01
L62a	-87 559.17	3 760 433.29	R61A	-85 218.93	3 760 210.11
L63a	-87 655.36	3 760 460.74	R62	-85 831.78	3 760 248.35
L64a	-87 750.08	3 760 492.91	R63	-85 920.72	3 760 254.79
L65a	-87 817.04	3 760 514.13	R64	-85 972.11	3 760 260.46
L66a	-87 892.64	3 760 552.22	R65	-86 286.30	3 760 304.80
L67a	-88 157.01	3 760 672.93	R65a	-86 597.46	3 760 354.04
L68a	-88 222.76	3 760 697.46	R66a	-86 796.91	3 760 380.04
L69a	-88 284.36	3 760 731.09	R6Ta	-86 976.84	3 760 399.93
L70a	-88 383.26	3 760 776.25	R68a	-87 118.22	3 760 413.37
L71a	-88 479.36	3 760 820.13	R69a	-87 161.14	3 760 413.15
L72a	-88 611.47	3 760 879.01	R70a	-a7 355.62	3 760 442.20
L73a	-88 658.56	3 760 896.05	R71a	-87 451.62	3 760 459.60
L74a	-88 703.42	3 760 918.32	R72a	-87 546.64	3 760 481.71
L75a	-88 940.02	3 761 013.29	R73a	-87 640.45	3 760 508.48
L76a	-89 037.47	3 761 050.61	R74a	-87 734.00	3 760 540.26
L77a	-89 084.53	3 761 067.56			
L78a	-89 130.86	3 761 086.37			
L79a	-89 336.23	3 761 165.01			

Vel	van	P
Sheet	8B of 10	370/88

LINKERKANT/LEFT HAND SIDE				REGTERKANT/RIGHT HAND SIDE			
	Y	X	Lo 23°		Y	X	
L80a	-89 384.07	3 761	179.89	R75a	-87 798.95	3 760	568.14
L81a	-89 520.48	3 761	231.36	R76a	-87 871.87	3 760	597.70
L82a	-89 570.35	3 761	259.20	R77a	-88 136.24	3 760	718.42
L83a	-89 696.72	3 761	306.60	R78a	-88 197.24	3 760	752.97
L84a	-89 882.27	3 761	371.26	R79a	-88 263.59	3 760	776.57
L85a	-89 951.07	3 761	393.17	R80a	-88 458.80	3 760	865.72
L86a	-90 043.08	3 761	426.10	R81a	-88 537.60	3 760	900.84
L87a	-90 174.22	3 761	450.69	R82a	-88 640.05	3 760	950.33
L84	-90 276.68	3 761	476.55	R83a	-88 684.79	3 760	964.73
L85	-90 830.70	3 761	537.00	R84a	-88 853.44	3 761	032.42
L86	-90 836.50	3 761	532.50	R85a	-89 026.64	3 761	110.79
L87	-91 410.59	3 761	594.39	R86a	-89 083.37	3 761	130.97
L88	-91 569.12	3 761	616.60	R87a	-89 172.41	3 761	176.75
L89	-92 125.86	3 761	676.93	R88a	-89 341.48	3 761	223.01
L90	-92 226.03	3 761	680.74	R89a	-89 370.83	3 761	231.14
L91	-92 324.69	3 761	698.47	R90a	-89 458.12	3 761	264.39
L92	-93 438.16	3 761	819.13	R91a	-89 868.20	3 761	421.00
L93	-93 477.05	3 761	818.32	R92a	-89 877.09	3 761	424.42
L94	-93 578.00	3 761	828.00	R93a	-90 262.50	3 761	526.00
L95	-93 656.00	3 761	840.00	R94a	-90 741.50	3 761	651.00
L96	-93 756.00	3 761	846.00	R95a	-90 758.18	3 761	655.36
L97	-93 855.00	3 761	850.00	R96a	-90 808.50	3 761	589.50
L98	-93 954.49	3 761	851.90	R97a	-90 867.80	3 761	590.90
L99	-94 023.73	3 761	852.23	R98a	-91 364.89	3 761	644.76
L100	-94 360.97	3 761	851.01	R99a	-91 443.35	3 761	663.32
L101	-94 396.00	3 761	844.00	R100a	-91 623.38	3 761	672.77
L102	-94 396.00	3 761	847.00	R101a	-91 782.45	3 761	690.01
L103	-94 472.00	3 761	849.00	R102a	-91 861.45	3 761	703.60
L104	-94 535.00	3 761	851.00	R103a	-91 961.40	3 761	709.40
L105	-94 939.00	3 761	850.00	R104a	-92 060.28	3 761	725.15
L106	-95 075.00	3 761	851.00	R105a	-92 120.47	3 761	726.64
L107	-95 230.00	3 761	857.00	R106a	-92 218.81	3 761	747.35
L108	-95 514.00	3 761	868.00	R107a	-92 319.31	3 761	748.18
L109	-95 655.00	3 761	875.00	R108a	-93 432.77	3 761	868.85
L110	-95 791.00	3 761	858.00	R109a	-93 460.59	3 761	877.78
L111	-96 369.83	3 761	691.22	R110a	-93 545.84	3 761	885.53
L112	-96 612.66	3 761	649.06	R111a	-93 653.00	3 761	890.00
L113	-96 797.32	3 761	643.44	R112a	-93 753.00	3 761	896.00
L114	-96 981.45	3 761	656.04	R113a	-93 854.00	3 761	900.00
L115	-97 086.90	3 761	674.15	R114a	-93 953.91	3 761	901.90
				R115a	-94 023.83	3 761	902.23
				R116a	-94 547.69	3 761	906.36
				R117a	-94 724.00	3 761	900.00
				R118a	-94 938.42	3 761	900.17
				R119a	-95 116.47	3 761	908.34
				R120a	-95 396.00	3 761	913.67
				R120	-95 513.00	3 761	918.00
				R121	-95 654.00	3 761	925.00
				R122	-95 798.07	3 761	917.13
				R123	-96 273.69	3 761	808.62
				R124	-96 447.96	3 761	760.14

Vel	van	P
Sheet	9B of 10	370/88

PADRESERWE KOÖRDINATE

ROAD RESERVE CO-ORDINATES

LINKERKANT/LEFT HAND SIDE

REGTERKANT/RIGHT HAND SIDE

Y

X

Lo 23°

Y

X

R125	-96	621.13	3 761	732.72
R126	-96	737.86	3 761	725.31
R127	-96	904.78	3 761	729.98
R128	-97	010.00	3 761	742.13
R129	-97	088.61	3 761	756.97

Vel	van	P
Sheet 10B	of 10	370/88