
GOVERNMENT NOTICE
GOEWERMENTSKENNISGEWING

DEPARTMENT OF TRANSPORT
DEPARTEMENT VAN VERVOER

No. 354

13 April 2006

THE SOUTH AFRICAN NATIONAL ROAD AGENCY LIMITED

DECLARATION OF NATIONAL ROAD N17 SECTION 2 SPRINGS TO
GAUTENG/MPUMALANGA PROVINCIAL BORDER PROVINCE OF GAUTENG.

By virtue of section 40(1)(a) of the South African National Road Agency Limited and National Roads Act, 1998 (Act No. 7 of 1998), I hereby declare the Section of road as depicted on the attached Plan P559/05 sheets 1 to 11, as a National Road.

(N17 Section 2 Springs – Gauteng/Mpumalanga Provincial Border)


MINISTER OF TRANSPORT

No. 354

13 April 2006.

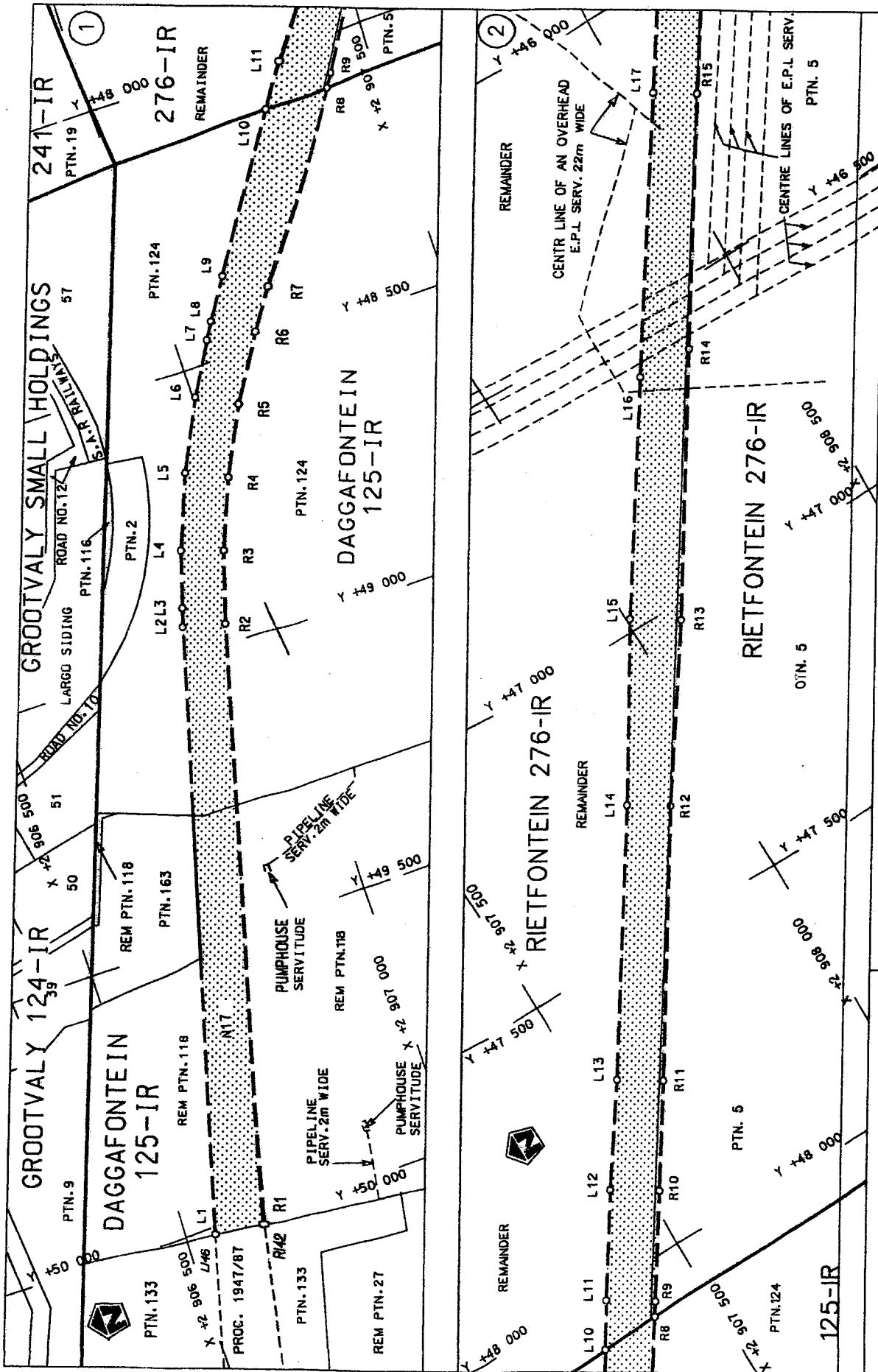
DIE SUID AFRIKAANSE NASIONALE PADAGENTSAP BEPERK

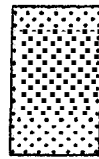
VERKLARING VAN NASIONALE PAD N17 SEKSIE 2 : SPRINGS TOT
GAUTENG/MPUMALANGA PROVINSIALE GRENS: PROVINSIE VAN GAUTENG.

Kragtens Artikel 40(1)(a) van die Suid-Afrikaanse Nasionale Padagentskap Beperk en Nasionale Paaie Wet, 1998 (Wet No. 7 van 1998), verklaar ek hiermee die Gedeelte pad soos aangedui op die aangehegte Plan P559/05 velle 1 tot 11, as 'n Nasionale Pad.

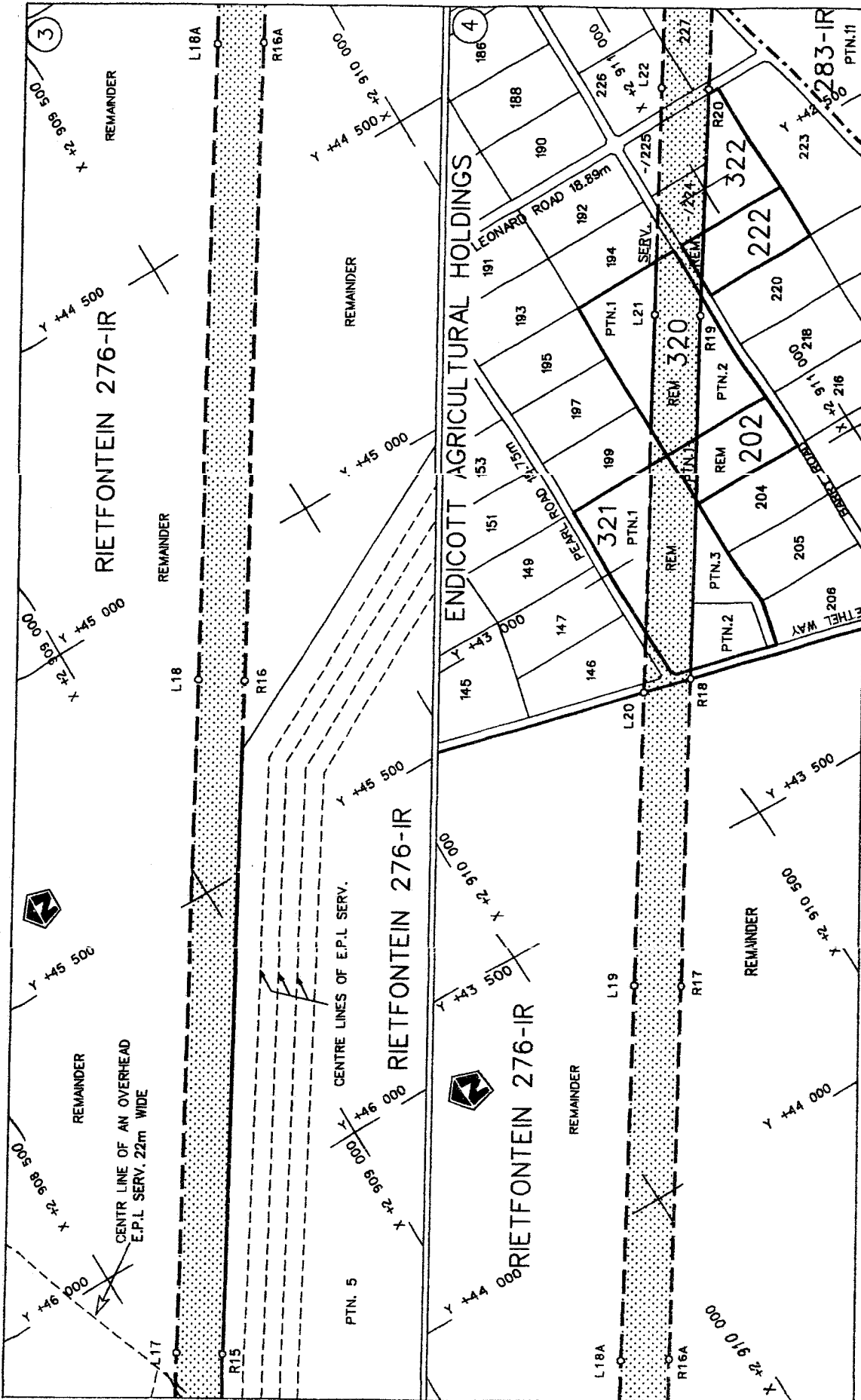
(N17 Seksie 2: Springs – Gauteng/Mpumalanga Provinsiale Grens)

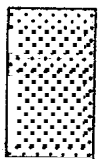

MINISTER VAN VERVOER



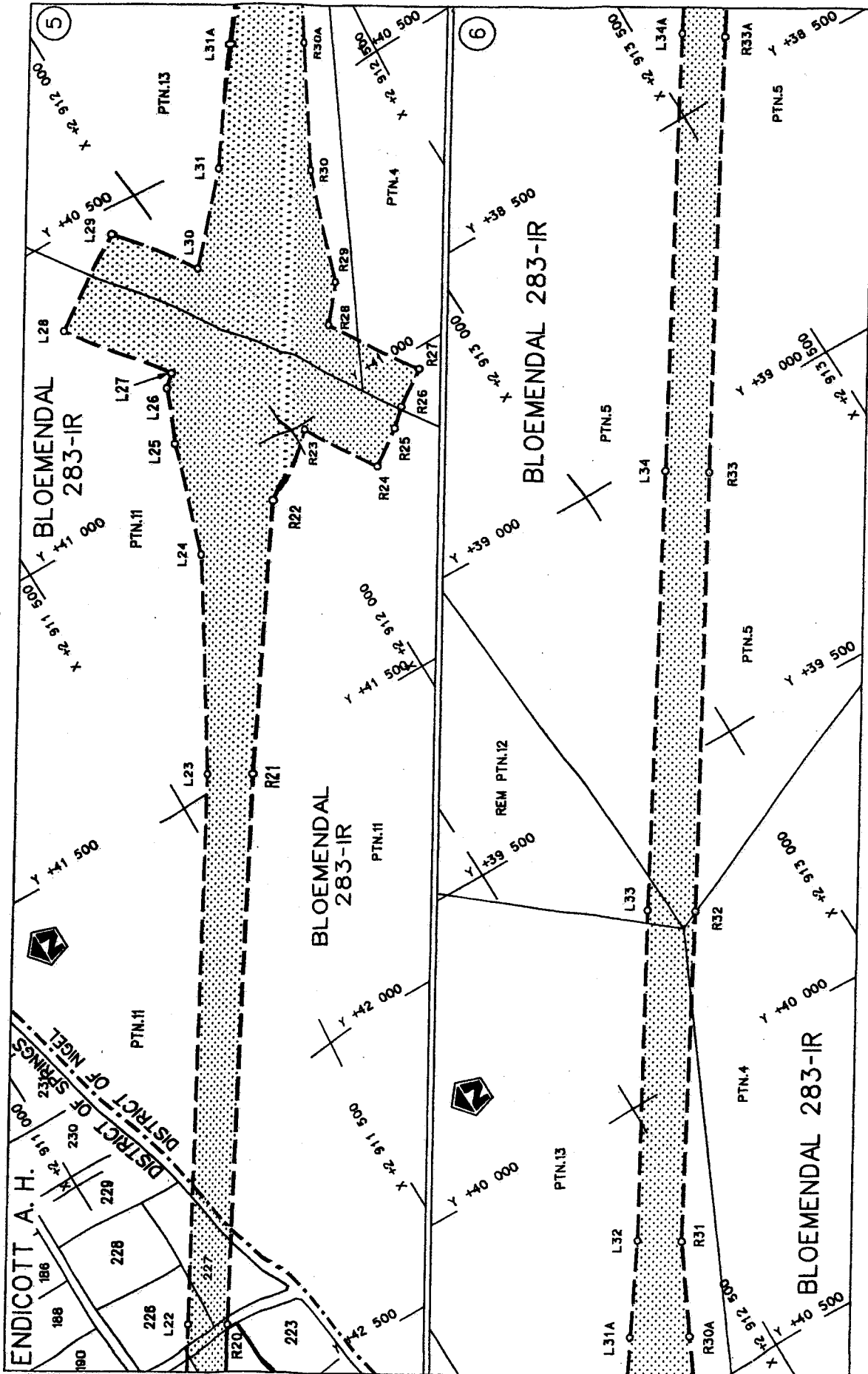
Die Suid Afrikaanse Nasionale Padagentskap Beprek The South African National Roads Agency Limited	Die figuur getoon The figure shown		stel die padreserve voor van 'n gedeelte represents the road reserve of a portion van Nasionale Roete N17 of National Route	2	van Sheet 1 of 11
			Section	Plan P559/05	

D.O.9.A



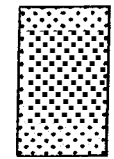
<p>Die Suid Afrikaanse Nasionale Padagentskap Beperk The South African National Roads Agency Limited</p>	<p>Die figuur getoon The figure shown</p>  <p>stel die padreserwe voor van 'n gedeelte represents the road reserve of a portion van Nasionale Roete N17 of National Route N17</p>	<p>Vel Sheet 2 van 11</p> <p>Plan P559/05</p>
<p>2</p>		<p>Section</p>

D.O.9.A



Vel Sheet 3 of 11	Plan P559/05
----------------------	--------------

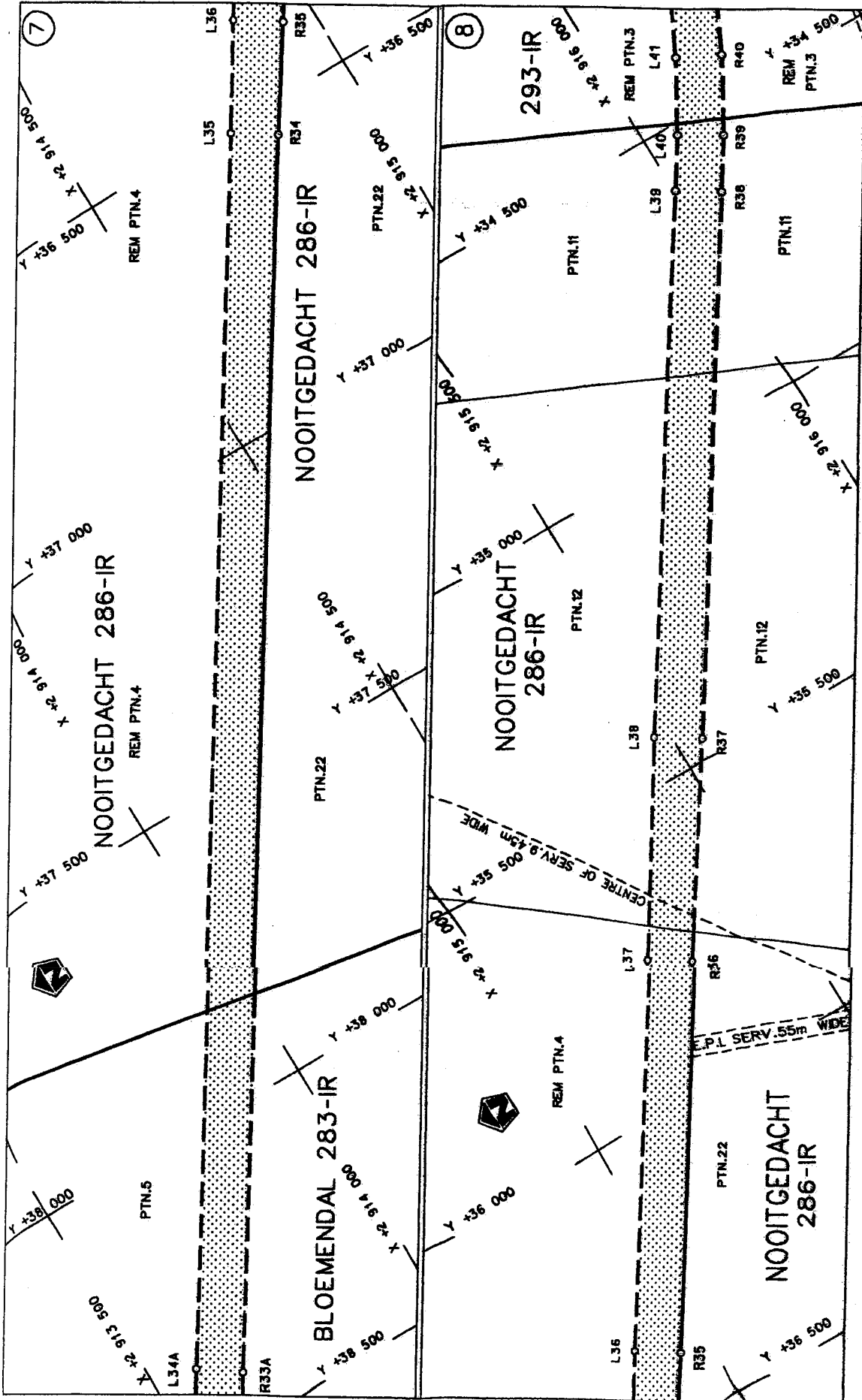
stel die padreserwe of van 'n gedeelte
represents the road reserve of a portion
van Nasionale Roete N17 Seksie 2
of National Route



Die figuur getoon
The figure shown

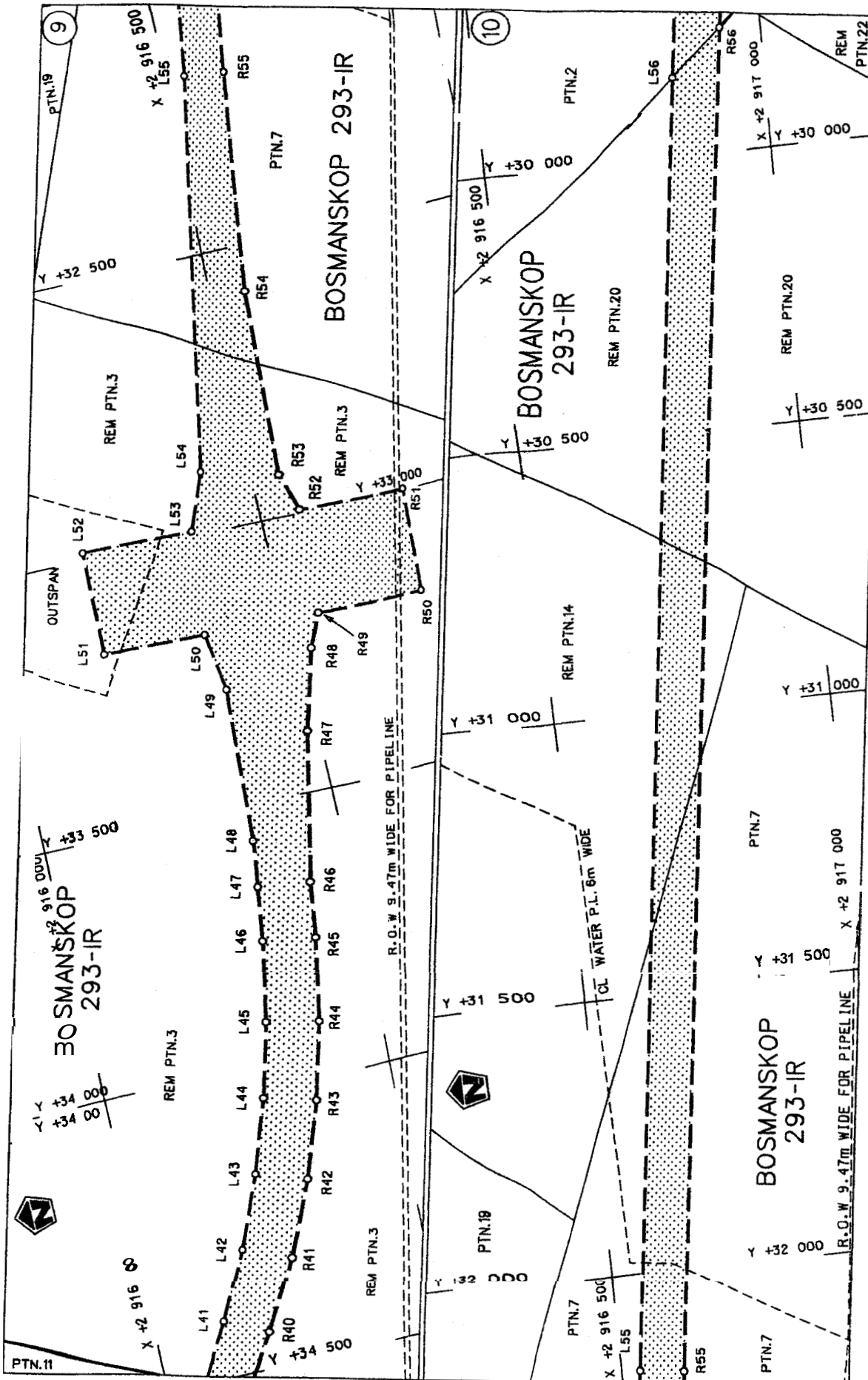
Die Suid Afrikaanse Nasionale Padagentskap Bepark
The South African National Roads Agency Limited

D.O.9.A



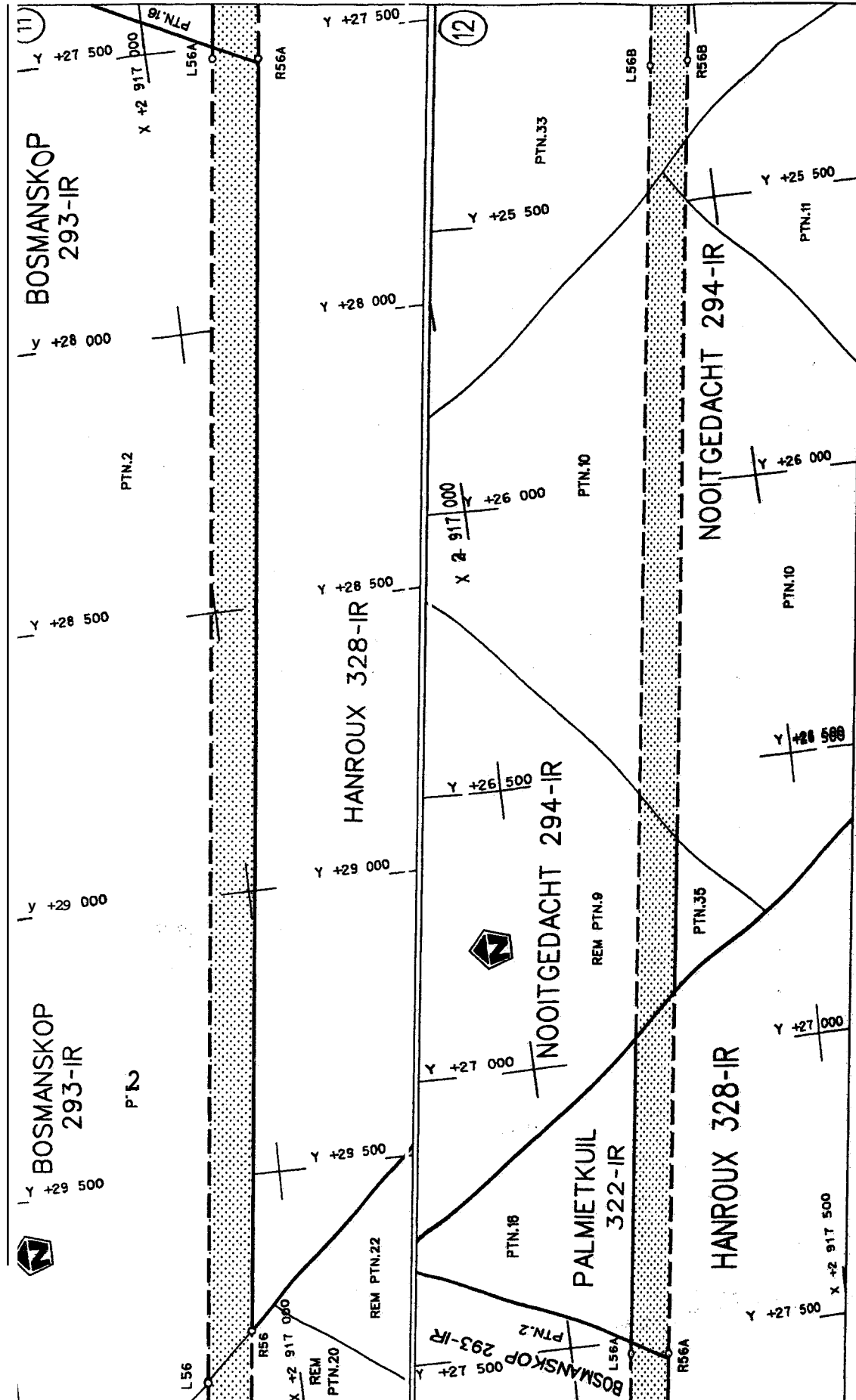
E-Fluid Afrikaanse Nasionale Paaientse-rop Bepark South African National Roads Agency Limited	Die figuur getoon The figure shown		steldie padreserwe of van 'n gedeelte represents the road reserve of a portion van Nasionale Roete N17 of National Route Section	Vel Sheet 4 of 11 Plan P559/05
			2	

D.O.9-5



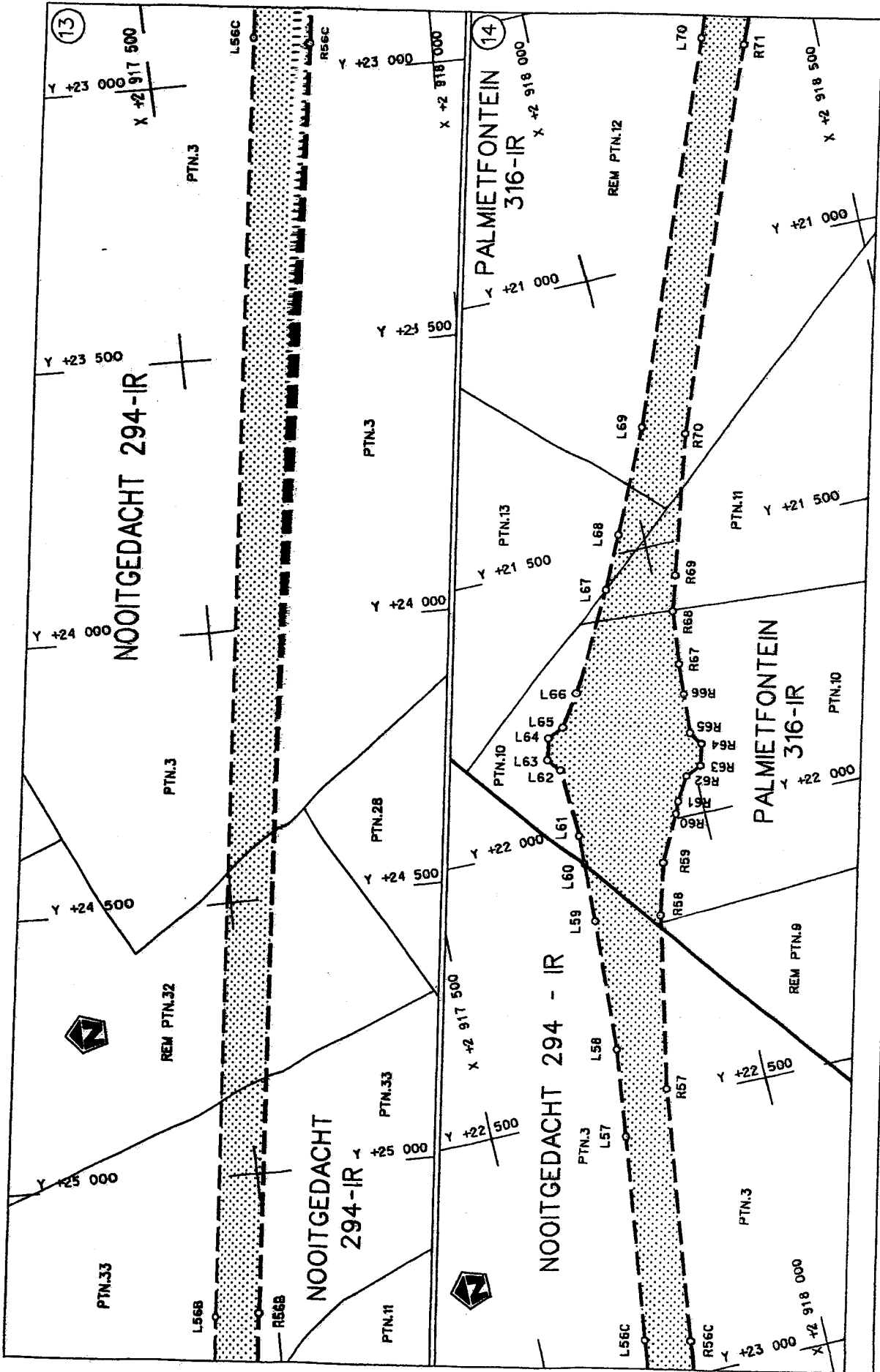
<p>Die Suid Afrikaanse Nasionale Padagentskap Beperk The South African National Roads Agency Limited</p>	<p>Die figuur getoon The figure shown</p>	<p>stelde padreserwe voor van 'n gedeelte represents the road reserve of a portion van Nasionale Roete N17 Sektie c</p>	<p>Vel Sheet 5 of 11 Plan P.559/05</p>
--	---	---	--

0000



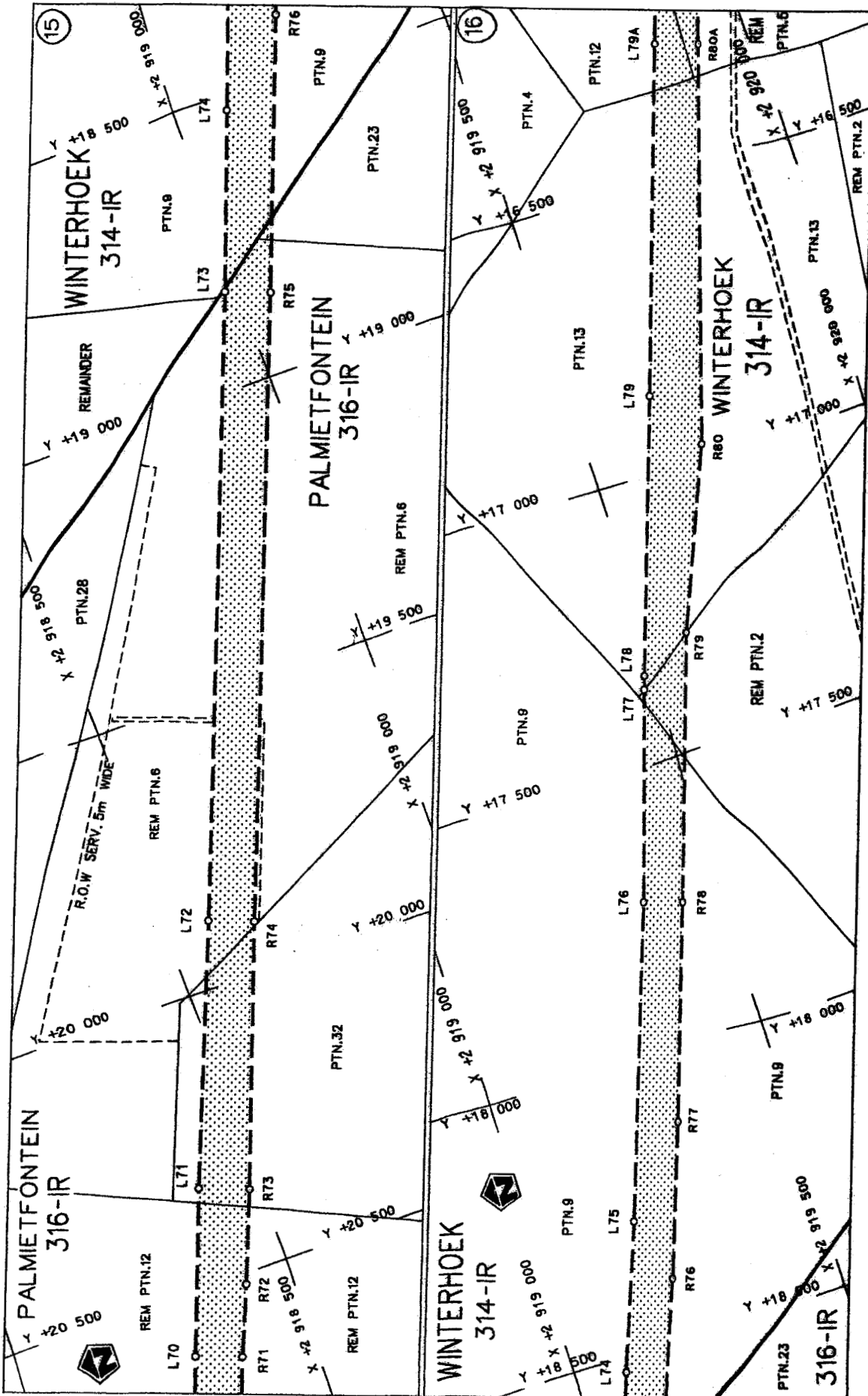
<p>Die Suid Afrikaanse Nasionale Padagentekap Beperk The South African National Roads Agency Limited</p>	<p>Die figuur getoon The figure shown</p>	<p>stel die padreserwe voor van 'n gedeelte represents the road reserve of a portion van Nasionale Roete N17 of National Route N17</p>	<p>Vel Sheet 6 of 11 Plan P559/05</p>
		<p>Seksie 2 Section</p>	

D.O.9.A

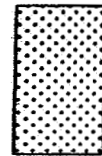


<p>Die Suid Afrikaanse Nasionale Padagentskap Beperk The South African National Roads Agency Limited</p>	<p>Die figuur getoon The figure shown</p>	<p>stel die padreserve voor van 'n gedeelte represents the road reserve of a portion van Nasionale Roete N17 of National Route</p>	<p>Vel Sheet 7 van 11</p>
<p>Plan P559/05</p>		<p>2</p>	<p>Section</p>

D.O.9.A



Die figuur getoon
The figure shown

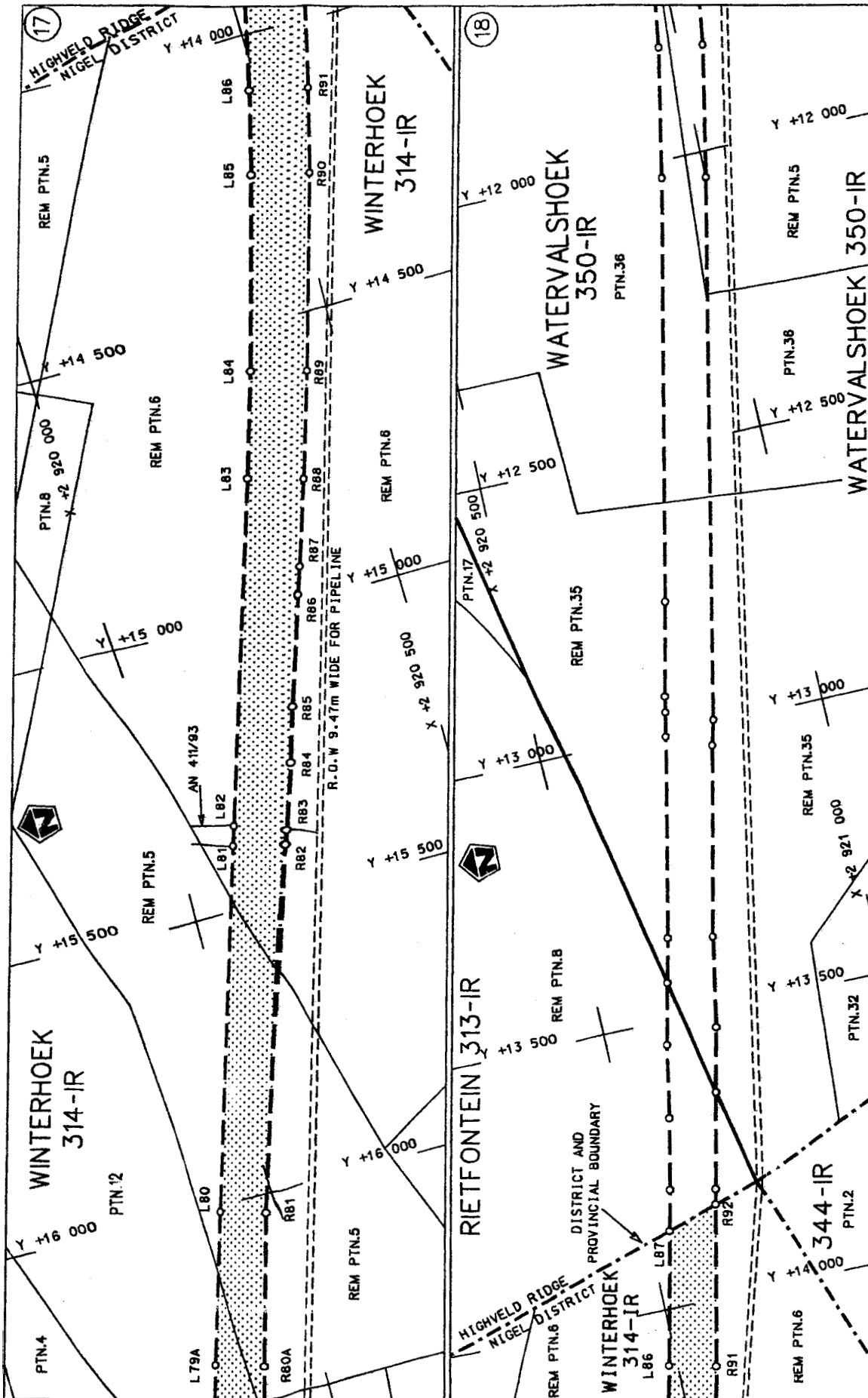


staldie padreserwe voor van 'n gedeelte
represents the road reserve of a portion
van Nasionale Roete N17
of National Route N17

Plan 2

Vel 8 van 11
Sheet 8 of 11
Plan DEERIVE

D.O.9.A



<p>Die Suid Afrikaanse Nasionale Padagentakap Beperk The South African National Roads Agency Limited</p>	<p>Die figuur getoon The figure shown</p>	<p>stel die padreserwe voor van 'n gedeelte represents the road reserve of a portion van Nasionale Roete N17 of National Route</p>	<p>Vel Sheet 9 of 11</p>
<p>Seksie 2 & 3 Section</p>		<p>Plan P559/05</p>	

D.O.9.A

PADRESERWE KOÖRDINATE				/ ROAD RESERVE CO-ORDINATES			
LINKERKANT/LEFT HAND SIDE				REGTERKANT/RIGHT HAND SIDE			
	Y	X	WG 29°		Y	X	
L14 6	50 013.40	2 906 554.98		R142	50 021.52	2 906 635.69	
L2	48 943.81	2 906 847.28		R2	48 964.90	2 906 924.45	
L3	48 910.47	2 906 857.78		R3	48 836.27	2 906 964.96	
L4	48 809.33	2 906 889.63		R4	48 711.11	2 907 015.20	
L5	48 676.49	2 906 942.15		R5	48 590.17	2 907 074.87	
L6	48 552.05	2 907 004.54		R6	48 474.16	2 907 143.64	
L7	48 460.87	2 907 058.58		R7	48 402.48	2 907 189.92	
L8	48 430.76	2 907 076.43		R8	48 092.41	2 907 395.64	
L9	48 359.08	2 907 122.71		R9	48 069.13	2 907 411.08	
L10	48 095.80	2 907 288.07		R10	47 901.11	2 907 519.56	
L11	48 020.32	2 907 335.47		R11	47 733.08	2 907 628.04	
L12	47 852.29	2 907 443.95		R12	47 310.31	2 907 895.04	
L13	47 686.98	2 907 556.63		R13	47 028.47	2 908 085.33	
L14	47 267.05	2 907 827.89		R14	46 610.00	2 908 351.20	
L15	46 977.48	2 908 006.36		R15	46 218.1'5	2 908 600.15	
L16	46 607.07	2 908 249.35		R16	45 210.00	2 909 251.03	
L17	46 174.76	2 908 532.94		R17	43 697.78	2 910 227.34	
L18	45 166.61	2 909 183.82		R18	43 235.96	2 910 525.50	
L19	43 654.39	2 910 160.13		R19	42 689.63	2 910 878.21	
L20	43 214.69	2 910 444.01		R20	42 354.13	2 911 096.01	
L21	42 646.24	2 910 811.00		R21	41 513.46	2 911 637.57	
L22	42 309.65	2 911 027.12		R22	41 099.91	2 911 918.85	
L23	41 470.07	2 911 570.36		R23	41 010.85	2 912 022.23	
L24	41 119.38	2 911 764.63		R24	41 147.27	2 912 117.89	
L25	40 919.89	2 911 824.39		R25	41 104.38	2 912 180.63	
L26	40 826.66	2 911 864.34		R26	41 077.68	2 912 210.84	
L27	40 806.86	2 911 885.24		R27	41 034.80	2 912 273.58	
L28	40 651.90	2 911 779.34		R28	40 874.18	2 912 163.81	
L29	40 543.57	2 911 937.86		129	40 815.39	2 912 215.62	
L30	40 670.19	2 912 024.40		R30	40 613.73	2 912 272.01	
L31	40 536.17	2 912 151.87		R31	40 253.28	2 912 451.16	
L32	40 209.89	2 912 383.95		R32	39 750.83	2 912 779.12	
L33	39 704.18	2 912 706.87		133	39 077.11	2 913 210.52	
L34	39 033.71	2 913 143.31		134	36 556.74	2 914 837.70	
L35	36 513.34	2 914 770.49		135	36 389.80	2 914 947.86	
L36	36 344.24	2 914 877.29		136	35 800.63	2 915 325.66	
L37	35 757.23	2 915 258.65		137	35 466.20	2 915 545.34	
L38	35 419.56	2 915 473.09		R38	34 647.58	2 916 070.28	
L39	34 604.19	2 916 003.07		139	34 562.34	2 916 124.36	
L40	34 520.56	2 916 056.13		140	34 437.79	2 916 195.01	
L41	34 400.67	2 916 124.15		R41	34 308.80	2 916 257.16	
L42	34 276.50	2 916 183.99		R42	34 175.94	2 916 310.58	
L43	34 148.60	2 916 235.39		R43	34 039.80	2 916 354.97	
L44	34 017.56	2 916 278.13		144	33 901.00	2 916 390.17	
L45	33 883.95	2 916 312.01		145	33 760.15	2 916 416.00	
L46	33 748.36	2 916 336.87		146	33 660.08	2 916 429.29	
L47	33 650.18	2 916 349.91		R47	33 390.52	2 916 484.09	
L48	33 566.55	2 916 360.34		R48	33 244.15	2 916 522.50	
L49	33 286.23	2 916 375.16		R49	33 184.05	2 916 546.80	
L50	33 180.12	2 916 356.85		R50	33 188.19	2 916 746.39	
L51	33 176.48	2 916 181.51		R51	32 998.23	2 916 750.33	
				vel 10 Van 11 P559/055 Sheet of			

PADRESERWE KOÖRDINATE			ROAD RESERVE CO-ORDINATES		
LINKERKANT/LEFT HAND SIDE			REGTERKANT/RIGHT HAND SIDE		
	Y		Y	X	
L52	32 986.52	2 916 185.45	R52	32 993.29	2 916 560.30
L53	32 990.40	2 916 372.72	R53	32 924.50	2 916 545.25
L54	32 887.82	2 916 412.77	R54	32 584.27	2 916 564.52
L55	32 177.32	2 916 533.66	R55	32 187.22	2 916 613.05
L56	29 855.49	2 916 823.33	R56	29 775.54	2 916 913.93
L57	22 551.94	2 917 734.51	R57	22 482.45	2 917 823.88
L58	22 392.92	2 917 752.34	R58	22 169.03	2 917 882.41
L59	22 154.33	2 917 764.62	R59	22 075.78	2 917 907.26
L60	22 046.50	2 917 766.94	R60	21 991.64	2 917 947.37
L61	21 992.45	2 917 768.10	R61	21 970.40	2 917 956.67
L62	21 866.12	2 917 765.90	R62	21 928.26	2 917 981.71
L63	21 842.61	2 917 748.88	R63	21 914.66	2 918 011.16
L64	21 804.04	2 917 759.47	R64	21 876.09	2 918 021.76
L65	21 790.77	2 917 786.70	R65	21 852.59	2 918 005.13
L66	21 734.08	2 917 820.80	R66	21 779.69	2 918 008.93
L67	21 561.43	2 917 912.10	R67	21 723.53	2 918 011.85
L68	21 466.48	2 917 955.60	R68	21 626.36	2 918 022.09
L69	21 284.29	2 918 039.12	R69	21 562.58	2 918 040.88
L70	20 611.70	2 918 295.06	R70	21 312.84	2 918 113.85
L71	20 330.02	2 918 399.38	R71	20 640.25	2 918 370.79
L72	19 883.06	2 918 574.42	R72	20 519.88	2 918 419.99
L73	18 830.43	2 918 976.54	R73	20 361.43	2 918 481.59
L74	18 527.19	2 919 086.39	R74	19 911.61	2 918 649.15
L75	18 273.71	2 919 177.69	R75	18 858.98	2 919 051.28
L76	17 732.02	2 919 359.87	R76	18 395.89	2 919 223.60
L77	17 366.66	2 919 471.61	R77	18 130.43	2 919 314.64
L78	17 342.50	2 919 478.99	R78	17 756.17	2 919 436.14
L79	16 867.03	2 919 633.73	R79	17 294.51	2 919 582.30
L80	16 009.01	2 919 905.38	R80	16 981.18	2 919 710.00
L81	15 389.33	2 920 101.58	R81	16 033.16	2 919 981.65
L82	15 355.00	2 920 112.44	R82	15 408.71	2 920 179.35
L83	14 762.98	2 920 299.88	R83	15 384.07	2 920 187.68
L84	14 579.15	2 920 356.13	R84	15 271.01	2 920 224.84
L85	14 243.18	2 920 449.05	R85	15 175.13	2 920 253.31
L86	14 098.24	2 920 485.26	R86	14 984.46	2 920 313.67
L87	13 864.63	2 920 537.90	R87	14 937.09	2 920 329.72
			R88	14 787.43	2 920 377.10
			R89	14 602.10	2 920 433.81
			R90	14 263.90	2 920 529.42
			R91	14 117.51	2 920 564.96
			R92	13 836.85	2 920 626.34

Vel	11	Van	11	P559/055
Sheet		of		