



Government Gazette

REPUBLIC OF SOUTH AFRICA

Vol. 481 Pretoria 18 July 2005 No. 27806



AIDS HELPLINE: 0800-0123-22 Prevention is the cure

GENERAL NOTICE

NOTICE 1178 OF 2005



MUNICIPAL DEMARCATION BOARD

MUNICIPAL DEMARCATION BOARD

NOTICE IN TERMS OF SECTION 21 OF THE LOCAL GOVERNMENT: MUNICIPAL DEMARCATION ACT, 1998 AND SECTION 6 AND SCHEDULE 1 OF THE LOCAL GOVERNMENT: MUNICIPAL STRUCTURES ACT, 1998.
(Government Gazette)

Notice is hereby given under section 21 of the Local Government: Municipal Demarcation Act, 1998 (Act No. 27 of 1998), and section 6 and Schedule 1 of the Local Government: Municipal Structures Act, 1998 (Act No. 117 of 1998) of the Municipal Demarcation Board's decision:

- to withdraw the declaration of the district management areas mentioned in column 1 of the Schedule;
- to recommend to the MEC responsible for local government to include the district management areas, or parts thereof, in the municipal areas of the municipalities referred to in column 2 of the Schedule;
- to determine or re-determine the boundaries of the municipalities mentioned in column 3 of the Schedule; and
- to include the DMAs, or parts thereof, in wards by the re-delimitation of the boundaries of the wards referred to in Column 4 of the Schedule.

Members of the public are invited to submit written objections to:

The Municipal Demarcation Board
Private Bag X 28
HATFIELD
0028
Fax: **012-3422480**
E-mail: robert@demarcation.org.za

Objections must reach the above office within 21 days of the date of publication of this notice.

As soon as all objections have been considered, the Board's final decision will be gazetted.

A report on district management areas is available on the Board's web site –
www.demarcation.org.za

Maps of the areas can be obtained from Mr. Nic Scheepers: E-mail: nic@demarcation.org.za. Tel: 012-3422481. Fax: 012-3422480.

VUYO MLOKOTI

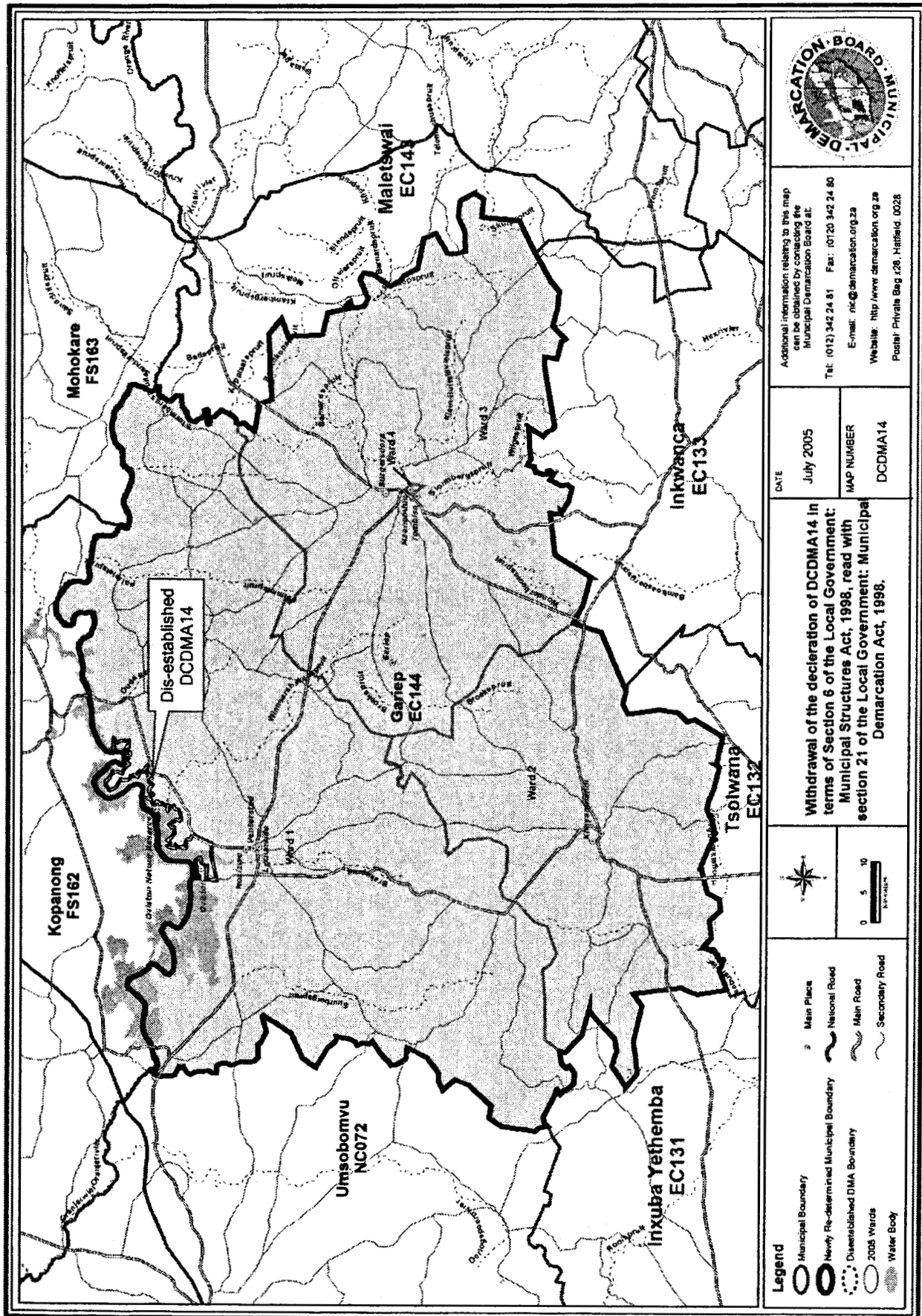
CHAIRPERSON: MUNICIPAL DEMARCATION BOARD

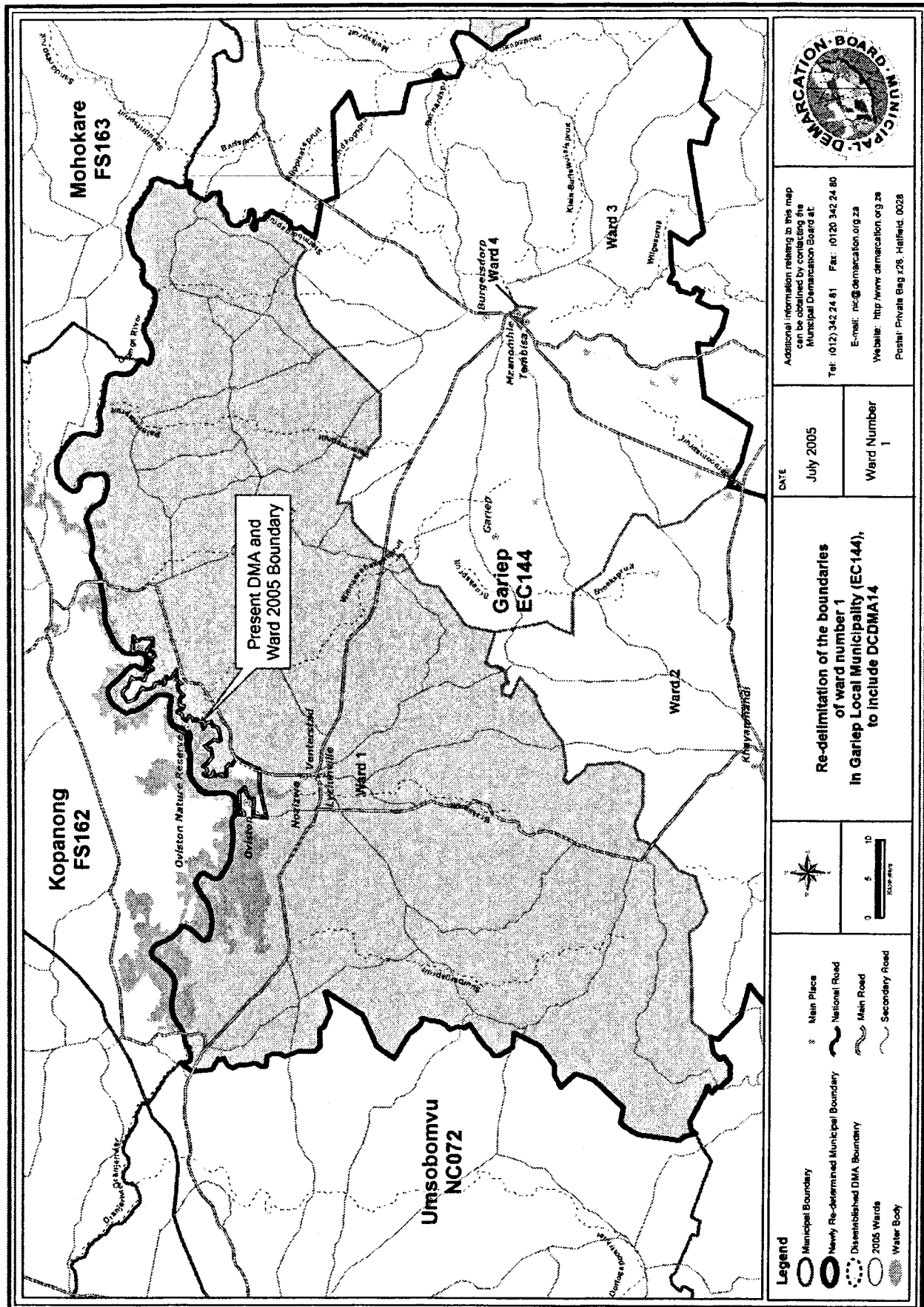
Reference: DMAs

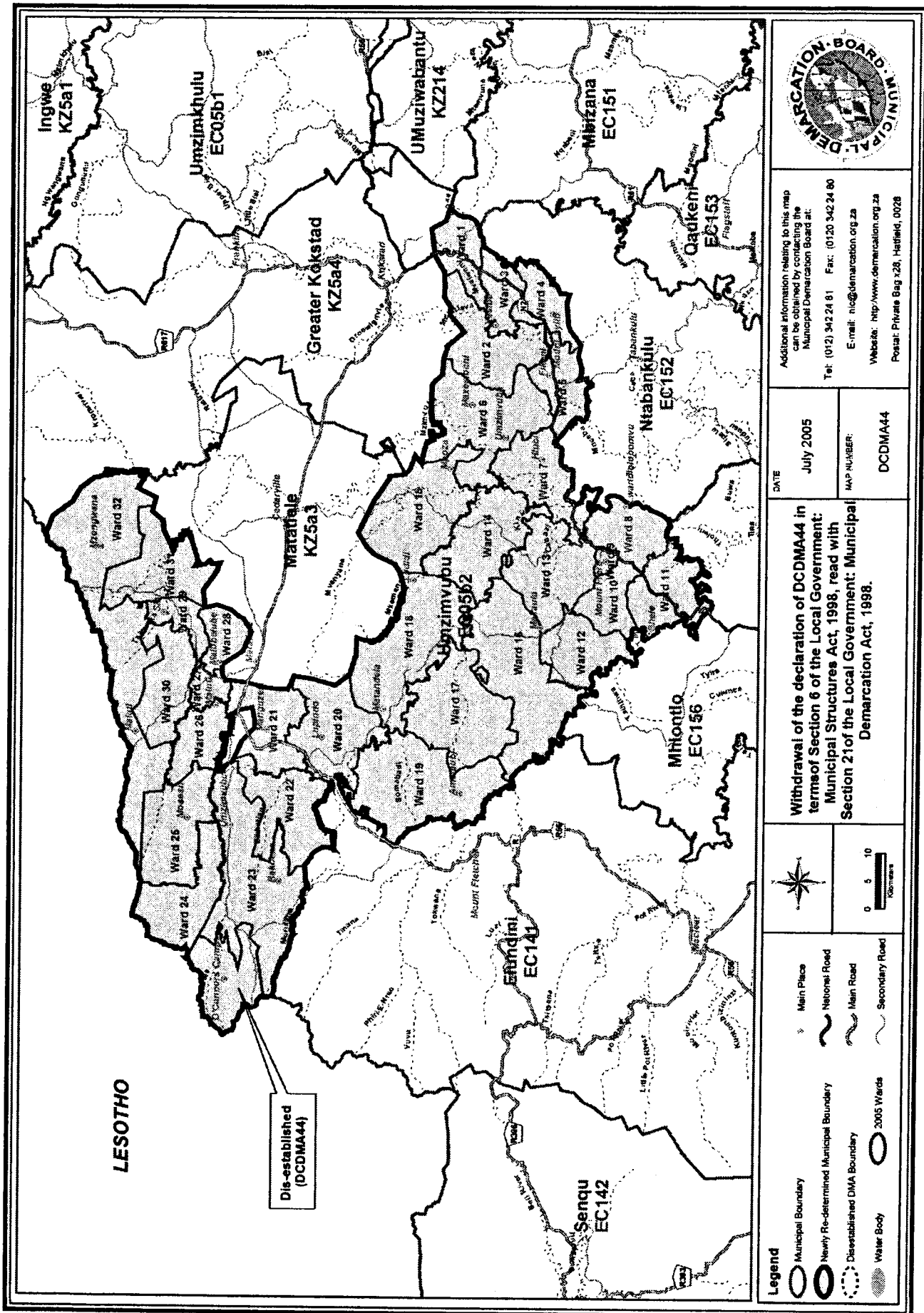
SCHEDULE

District Management Area	Municipality in which the DMA is included	Municipal boundaries re-determined	Wards re-delimited
DCDMA14 Oviston Nature Reserve	Gariep Local Municipality (EC144)	Gariep Local Municipality (EC144)	EC144: Ward 1
DCDMA44 O' Conners Camp	Umzimvubu Local Municipality (EC05b2)	Umzimvubu Local Municipality (EC05b2)	EC05b2 : Ward 23
DCDMA31 Mdala Nature Reserve	Dr. J S Moroka Local Municipality (MP316)	Dr. JS Moroko Local Municipality (MP316)	MP316 : Ward 15
DCDMA32 DMA Lowveld	The portion of the DMA situated in the municipal area of Nkomazi Local Municipality (MP324) into Nkomazi Local Municipality.	Mbombela Local Municipality (MP322)	MP324: Ward 17
	The portion of the DMA situated in the municipal area of Mbombela Local Municipality (MP322) into Mbombela.		MP322: Ward 24
	The portions of the DMA situated in the municipal area of Thaba Chew Local municipality		MP321: Wards 5 and 10

	(MP321) into Thaba Chew. The portion of the DMA situated in the municipal area of Umjindi Local municipality (MP323) into Umjundi.		MP323: Ward 6
DCDMA37 Pilansberg National Park	Moses Kotane Local Municipality(NW375)	Moses Kotane Local Municipality(NW375)	NW375: Ward 14
CBDCDMA3 Schuinsdraai Nature Reserve	Greater Marble Hall Local Municipality (CBLC3)	Greater Marble Hall Local municipality (CBLC3)	CBLB3 : Ward 13







Ward 23

