



home affairs

Department:
Home Affairs
REPUBLIC OF SOUTH AFRICA

Analysis specific arrivals patterns into South Africa

24 June 2015



home affairs

Department:
Home Affairs
REPUBLIC OF SOUTH AFRICA

We Care!



home affairs

Department:
Home Affairs
REPUBLIC OF SOUTH AFRICA

Update

- Latest statistics as provided by IS on the following:
- 1) Arrivals and Departures (All travellers)
- 2) Arrivals all travellers
- 3) Arrivals and Departures minors
- 4) Arrivals minors

for the period 1–22 June 2013, 2014,
2015 (slides 3–10)



home affairs

Department:
Home Affairs
REPUBLIC OF SOUTH AFRICA

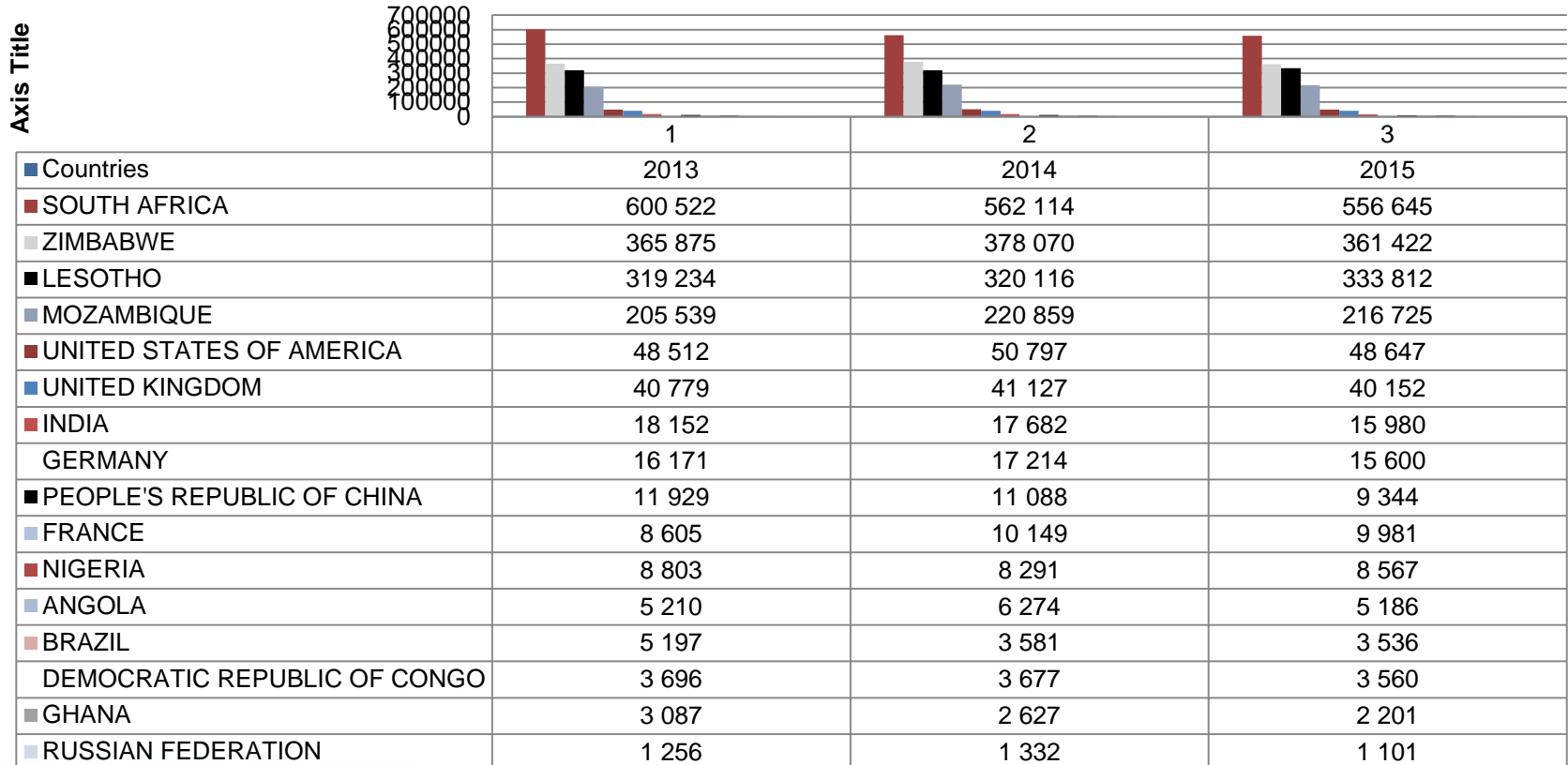
We Care!



home affairs

Department:
Home Affairs
REPUBLIC OF SOUTH AFRICA

Total arrivals and departures for period 01 June to 22 June 2013, 2014, 2015



home affairs

Department:
Home Affairs
REPUBLIC OF SOUTH AFRICA

We Care!

Total arrivals for period 01 June to 22 June 2013, 2014, 2015

Total arrivals for period 01 June to 22 June 2013, 2014, 2015				
Countries	2013	2014	2015	Total
SOUTH AFRICA	275 227	275 198	267 617	818 042
ZIMBABWE	188 795	200 645	193 899	583 339
LESOTHO	174 680	175 029	180 889	530 598
MOZAMBIQUE	106 973	118 618	113 295	338 886
UNITED STATES OF AMERICA	24 469	25 079	24 056	73 604
UNITED KINGDOM	19 393	19 845	19 215	58 453
INDIA	8 882	8 713	7 713	25 308
GERMANY	10 725	7 691	6 703	25 119
PEOPLE'S REPUBLIC OF CHINA	5 732	5 604	4 552	15 888
FRANCE	4 197	4 848	4 859	13 904
NIGERIA	4 611	4 347	4 298	13 256
ANGOLA	2 412	2 632	2 452	7 496
BRAZIL	2 409	1 739	1 679	5 827
DEMOCRATIC REPUBLIC OF CONGO	1 798	1 803	1 720	5 321
GHANA	1 645	1 345	1 065	4 055
RUSSIAN FEDERATION	610	623	526	1 759
				2 517
Volume	828 806	853 759	834 538	103

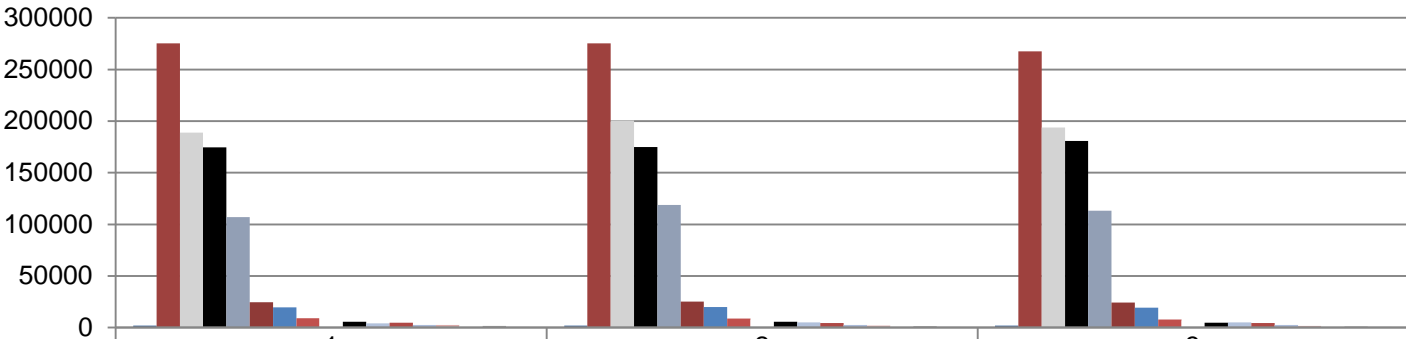


home affairs

Department:
Home Affairs
REPUBLIC OF SOUTH AFRICA

We Care!

Arrivals: All travellers (1-22 June 2013, 2014, 2015)



Countries	1	2	3
	2013	2014	2015
■ SOUTH AFRICA	275 227	275 198	267 617
■ ZIMBABWE	188 795	200 645	193 899
■ LESOTHO	174 680	175 029	180 889
■ MOZAMBIQUE	106 973	118 618	113 295
■ UNITED STATES OF AMERICA	24 469	25 079	24 056
■ UNITED KINGDOM	19 393	19 845	19 215
■ INDIA	8 882	8 713	7 713
■ GERMANY	10 725	7 691	6 703
■ PEOPLE'S REPUBLIC OF CHINA	5 732	5 604	4 552
■ FRANCE	4 197	4 848	4 859
■ NIGERIA	4 611	4 347	4 298
■ ANGOLA	2 412	2 632	2 452
■ BRAZIL	2 409	1 739	1 679
■ DEMOCRATIC REPUBLIC OF CONGO	1 798	1 803	1 720
■ GHANA	1 645	1 345	1 065
■ RUSSIAN FEDERATION	610	623	526



Arrivals And Departures - Travelers Younger than 18 Years of Age - (01-22June2013) - (01-22June2014) - (01-22June2015)

Countries	2013	2014	2015	Totals
SOUTH AFRICA	47 813	33 353	24 453	105 619
LESOTHO	13 630	17 024	9 109	39 763
ZIMBABWE	8 543	8 215	8 103	24 861
MOZAMBIQUE	6 873	7 132	4 649	18 654
UNITED STATES OF AMERICA	4 944	4 881	4 678	14 503
INDIA	2 339	2 144	1 707	6 190
UNITED KINGDOM	2 277	1 871	1 749	5 897
GERMANY	950	951	808	2 709
FRANCE	500	640	485	1 625
ANGOLA	432	714	393	1 539
NIGERIA	387	409	440	1 236
PEOPLE'S REPUBLIC OF CHINA	315	309	310	934
BRAZIL	266	253	198	717
DEMOCRATIC REPUBLIC OF CONGO	202	190	189	581
RUSSIAN FEDERATION	71	91	75	237
GHANA	72	47	36	155
Volume	89 614	78 224	57 382	225 220

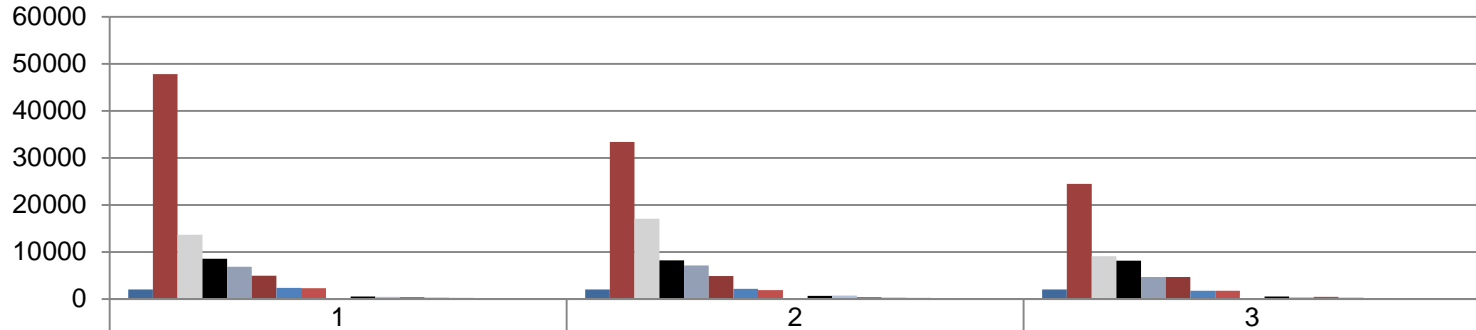


home affairs

Department:
Home Affairs
REPUBLIC OF SOUTH AFRICA

We Care!

Arrivals And Departures - Travelers Younger than 18 Years of Age - (01-22June2013) - (01-22June2014) - (01-22June2015)



Countries	2013	2014	2015
SOUTH AFRICA	47 813	33 353	24 453
LESOTHO	13 630	17 024	9 109
ZIMBABWE	8 543	8 215	8 103
MOZAMBIQUE	6 873	7 132	4 649
UNITED STATES OF AMERICA	4 944	4 881	4 678
INDIA	2 339	2 144	1 707
UNITED KINGDOM	2 277	1 871	1 749
GERMANY	950	951	808
FRANCE	500	640	485
ANGOLA	432	714	393
NIGERIA	387	409	440
PEOPLE'S REPUBLIC OF CHINA	315	309	310
BRAZIL	266	253	198
DEMOCRATIC REPUBLIC OF CONGO	202	190	189
RUSSIAN FEDERATION	71	91	75
GHANA	72	47	36



home affairs

Department:
Home Affairs
REPUBLIC OF SOUTH AFRICA

We Care!

Arrivals - Travelers Younger than 18 Years of Age - (01-22June2013) - (01-22June2014) - (01-22June2015)

Countries	2013	2014	2015 Total	
SOUTH AFRICA	16 016	16 072	11 214	43 302
LESOTHO	7 377	10 092	5 069	22 538
ZIMBABWE	4 944	5 044	4 982	14 970
MOZAMBIQUE	3 760	3 716	2 313	9 789
UNITED STATES OF AMERICA	2 719	2 605	2 526	7 850
UNITED KINGDOM	876	864	798	2 538
INDIA	990	817	653	2 460
GERMANY	220	329	173	722
FRANCE	206	287	219	712
ANGOLA	175	218	169	562
NIGERIA	158	199	179	536
PEOPLE'S REPUBLIC OF CHINA	126	159	118	403
BRAZIL	131	132	86	349
DEMOCRATIC REPUBLIC OF CONGO	102	102	96	300
RUSSIAN FEDERATION	34	37	29	100
GHANA	46	25	12	83
Volume	37 880	40 698	28 636	107 214

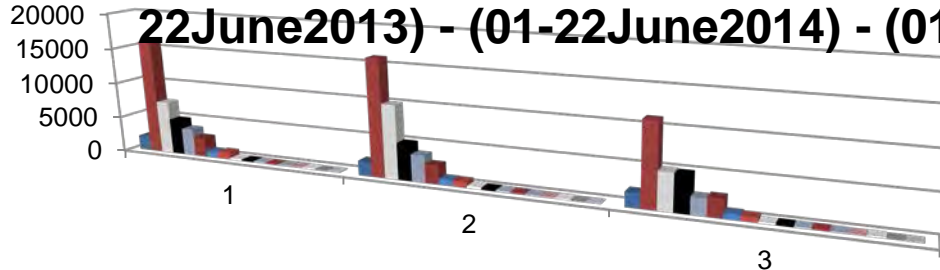


home affairs

Department:
Home Affairs
REPUBLIC OF SOUTH AFRICA

We Care!

Arrivals - Travelers Younger than 18 Years of Age - (01-22 June 2013) - (01-22 June 2014) - (01-22 June 2015)



Countries	1 2013	2 2014	3 2015
■ SOUTH AFRICA	16 016	16 072	11 214
■ LESOTHO	7 377	10 092	5 069
■ ZIMBABWE	4 944	5 044	4 982
■ MOZAMBIQUE	3 760	3 716	2 313
■ UNITED STATES OF AMERICA	2 719	2 605	2 526
■ UNITED KINGDOM	876	864	798
■ INDIA	990	817	653
■ GERMANY	220	329	173
■ FRANCE	206	287	219
■ ANGOLA	175	218	169
■ NIGERIA	158	199	179
■ PEOPLE'S REPUBLIC OF CHINA	126	159	118
■ BRAZIL	131	132	86
■ DEMOCRATIC REPUBLIC OF CONGO	102	102	96
■ RUSSIAN FEDERATION	34	37	29
■ GHANA	46	25	12



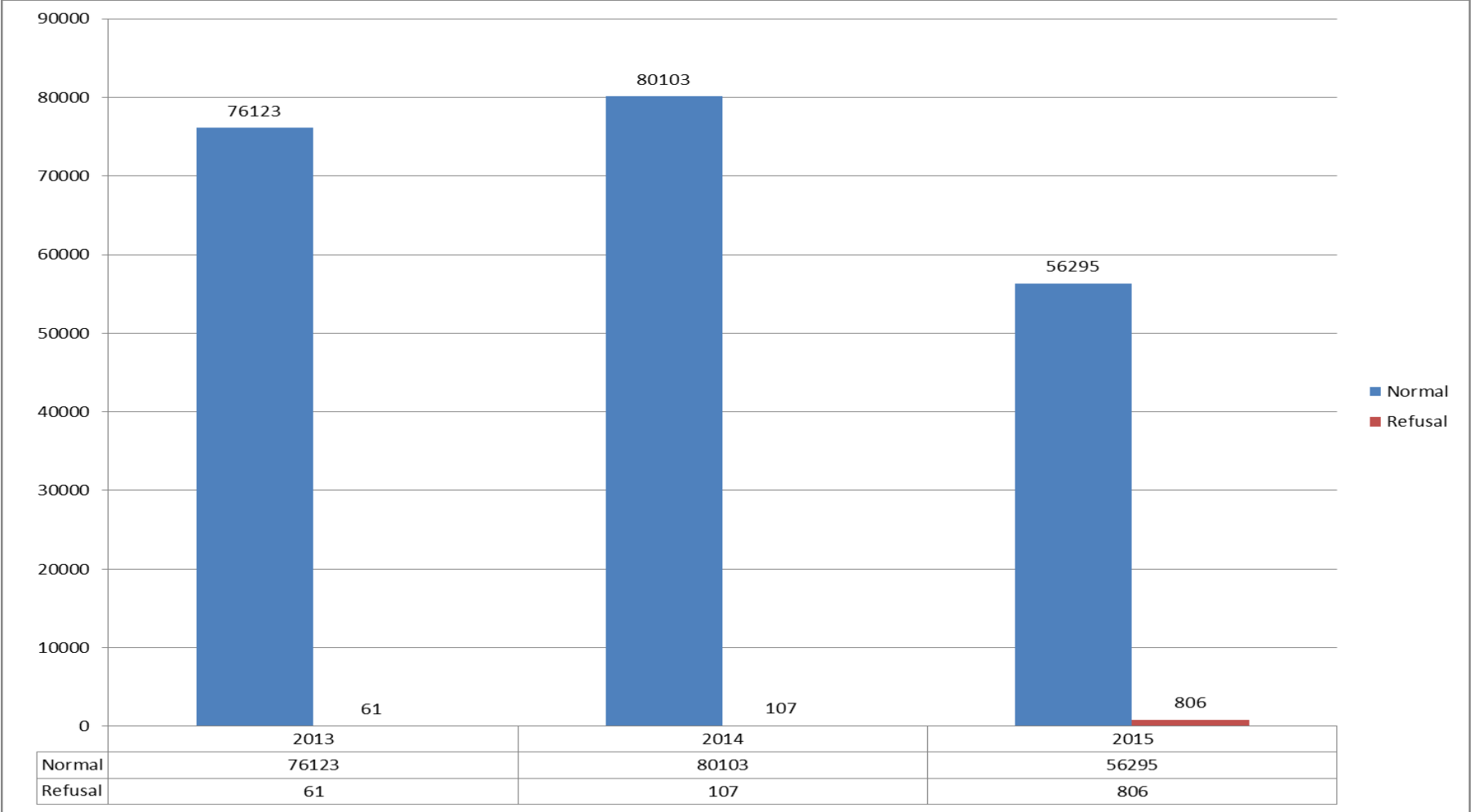
home affairs

Department:
Home Affairs
REPUBLIC OF SOUTH AFRICA

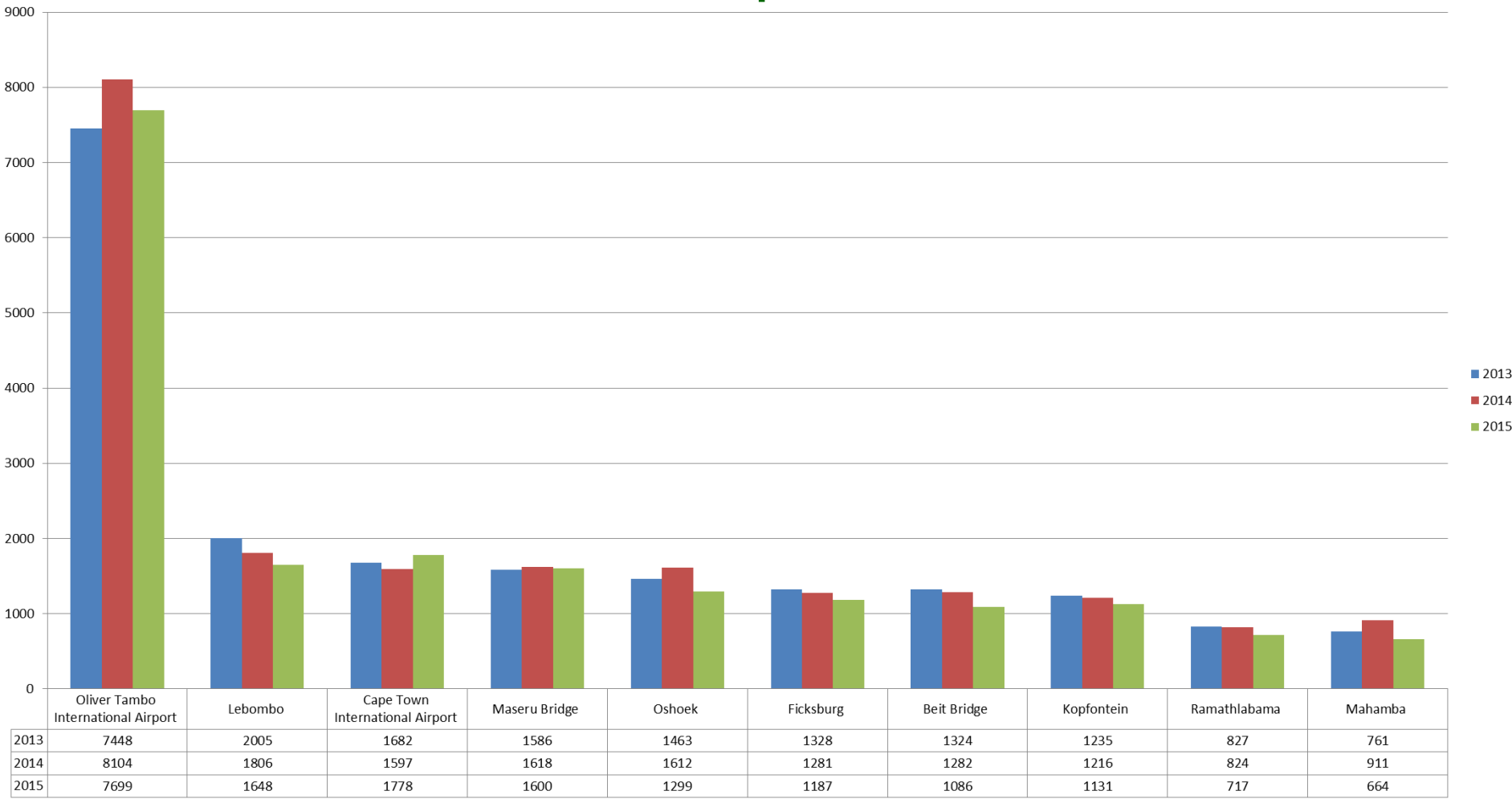
We Care!

Arrivals and Departures

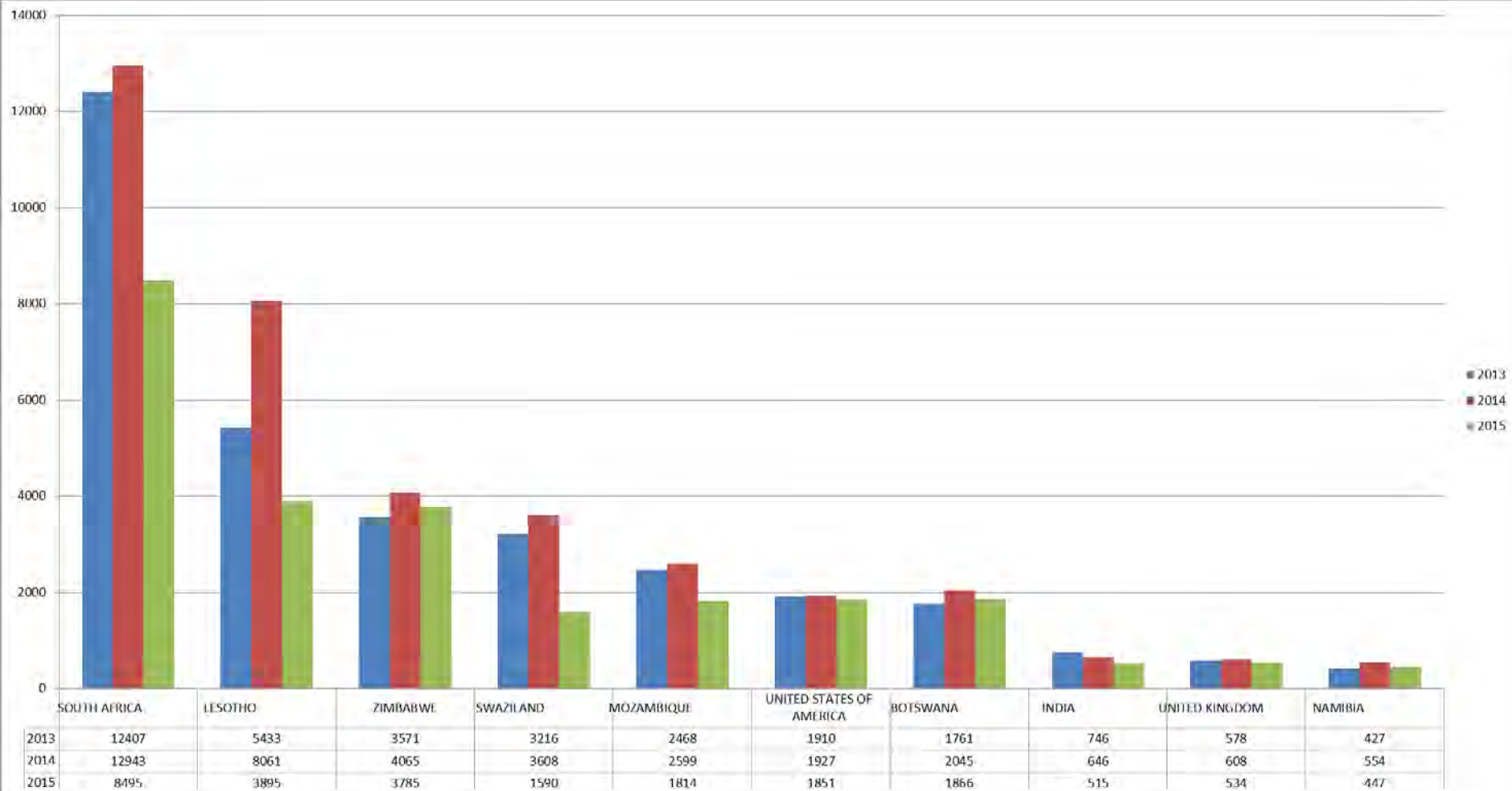
1 June to 17 June, 2013, 2014, 2015



Top 10 Ports – 1 June to 17 June, 2013, 2014, 2015 – Arrivals and Departures



Top 10 Countries – 1 June to 17 June, 2013, 2014, 2015 – Arrivals only



home affairs

Department:
Home Affairs
REPUBLIC OF SOUTH AFRICA

We Care!