

---

**GOVERNMENT NOTICES • GOEWERMENTSKENNISGEWINGS**

---

**DEPARTMENT OF TRANSPORT**

NO. 4425

23 February 2024

**THE SOUTH AFRICAN NATIONAL ROADS  
AGENCY SOC LIMITED**Registration No: 1998/009584/30

---

**DECLARATION AMENDMENT OF NATIONAL ROAD R385 SECTION 3**

AMENDMENT OF DECLARATION No. 2670 OF 2022.

By virtue of section 40(1)(b) of the South African National Roads Agency Limited and the National Roads Act 1998 (Act No. 7 of 1998), I hereby amend Declaration No. 2670 of 2022 by substituting paragraph K of the Schedule, being the descriptive declaration of the route from Daniëlskuil Turnoff up to Postmasburg, with the accompanying sheets 1 to 13 of Plan No. P1236/23.

**(National Road R385 Section 3: Daniëlskuil Turnoff – Postmasburg)**  

---

**MINISTER OF TRANSPORT**

DEPARTEMENT VAN VERVOER

NO. 4425

23 Februarie 2024

**DIE SUID-AFRIKAANSE NASIONALE  
PADAGENTSKAP MSB BEPERK**

Registrasie No: 1998/009584/30

---

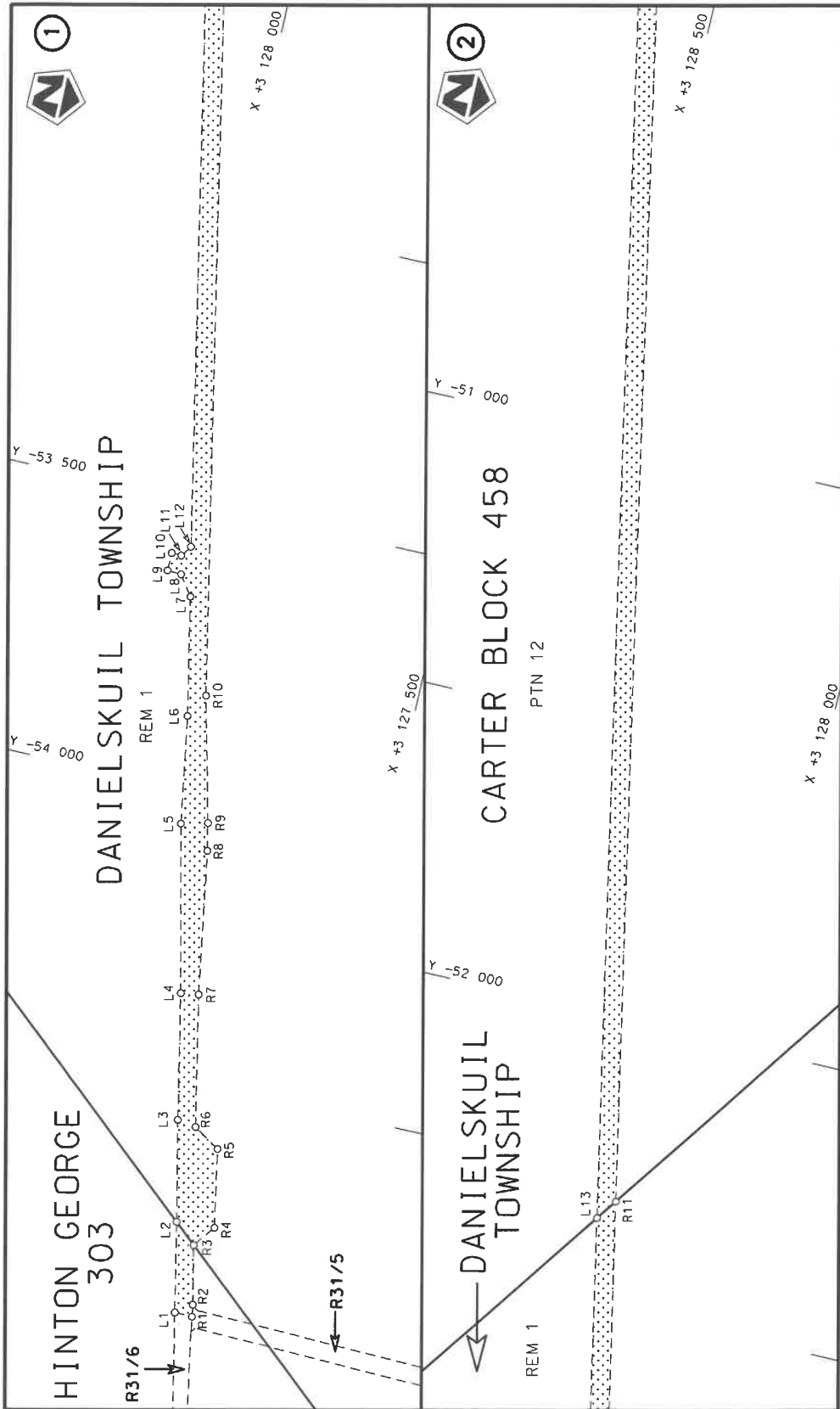
**VERKLARING WYSIGING VAN NASIONALE PAD R385 SEKSIE 3**

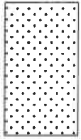
WYSIGING VAN VERKLARING No. 2670 VAN 2022.

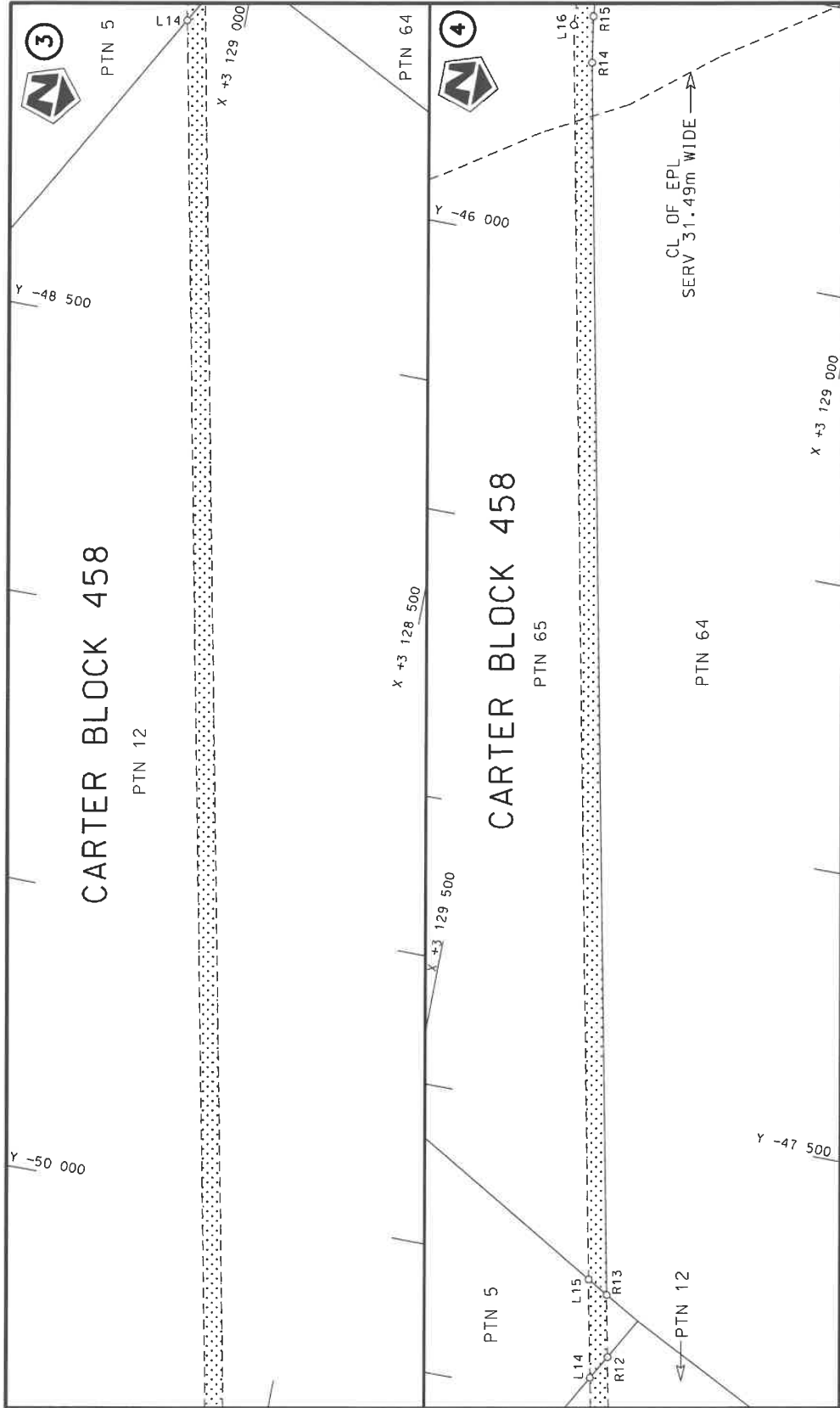
Kragtens Artikel 40(1)(b) van die Suid-Afrikaanse Nasionale Padagentskap Beperk en Nasionale Paaie Wet 1998 (Wet No. 7 van 1998), wysig ek hiermee Verklaring No. 2670 van 2022 deur paragraaf K van die Skedule te vervang, synde die gedeelte van die beskrywende verklaring van die pad vanaf Daniëlskuil Afdraai tot by Postmasburg, met bygaande velle 1 tot 13 van Plan No. P1236/23.

**(Nasionale Pad R385 Seksie 3: Daniëlskuil Afdraai – Postmasburg)**

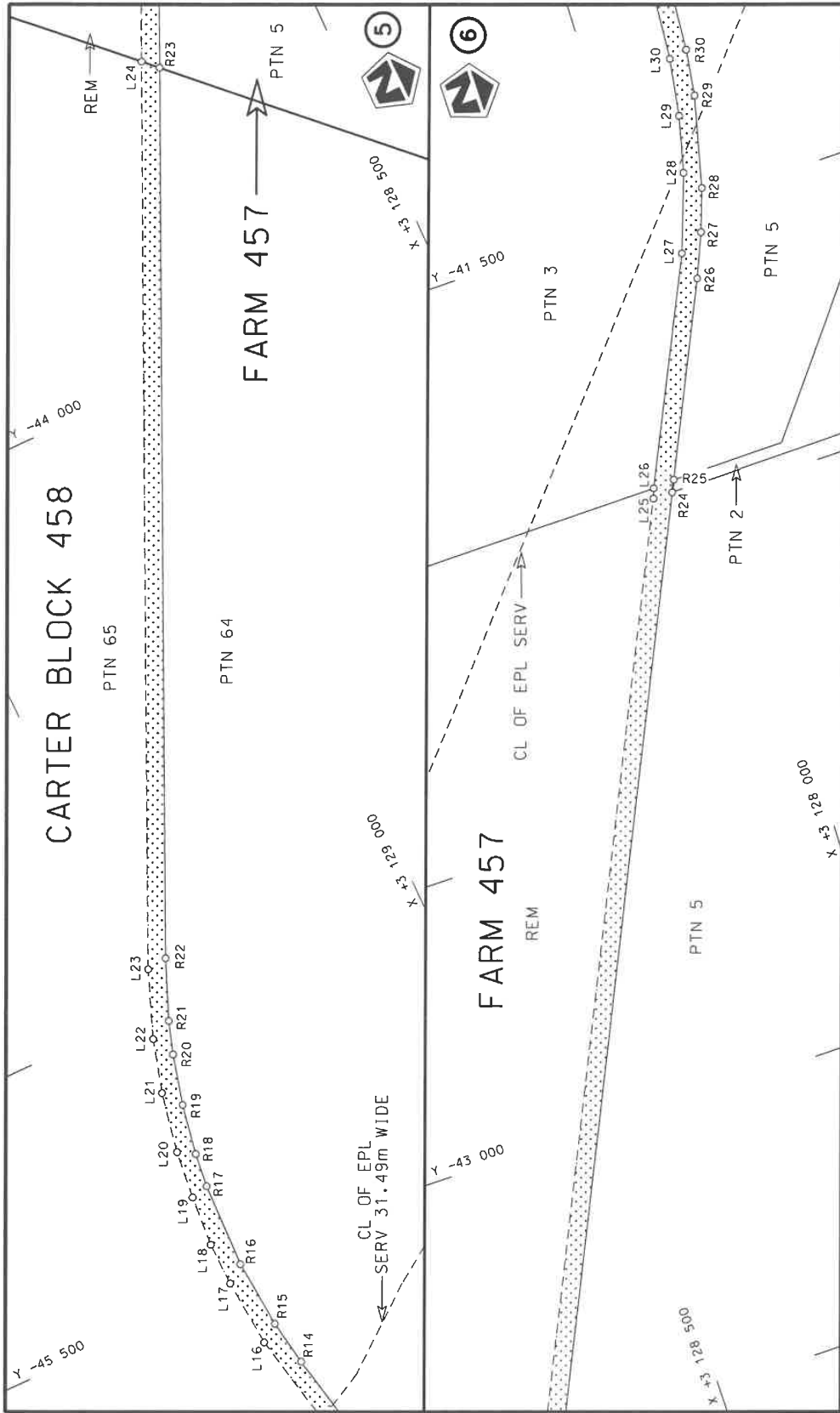
  
**MINISTER VAN VERVOER**



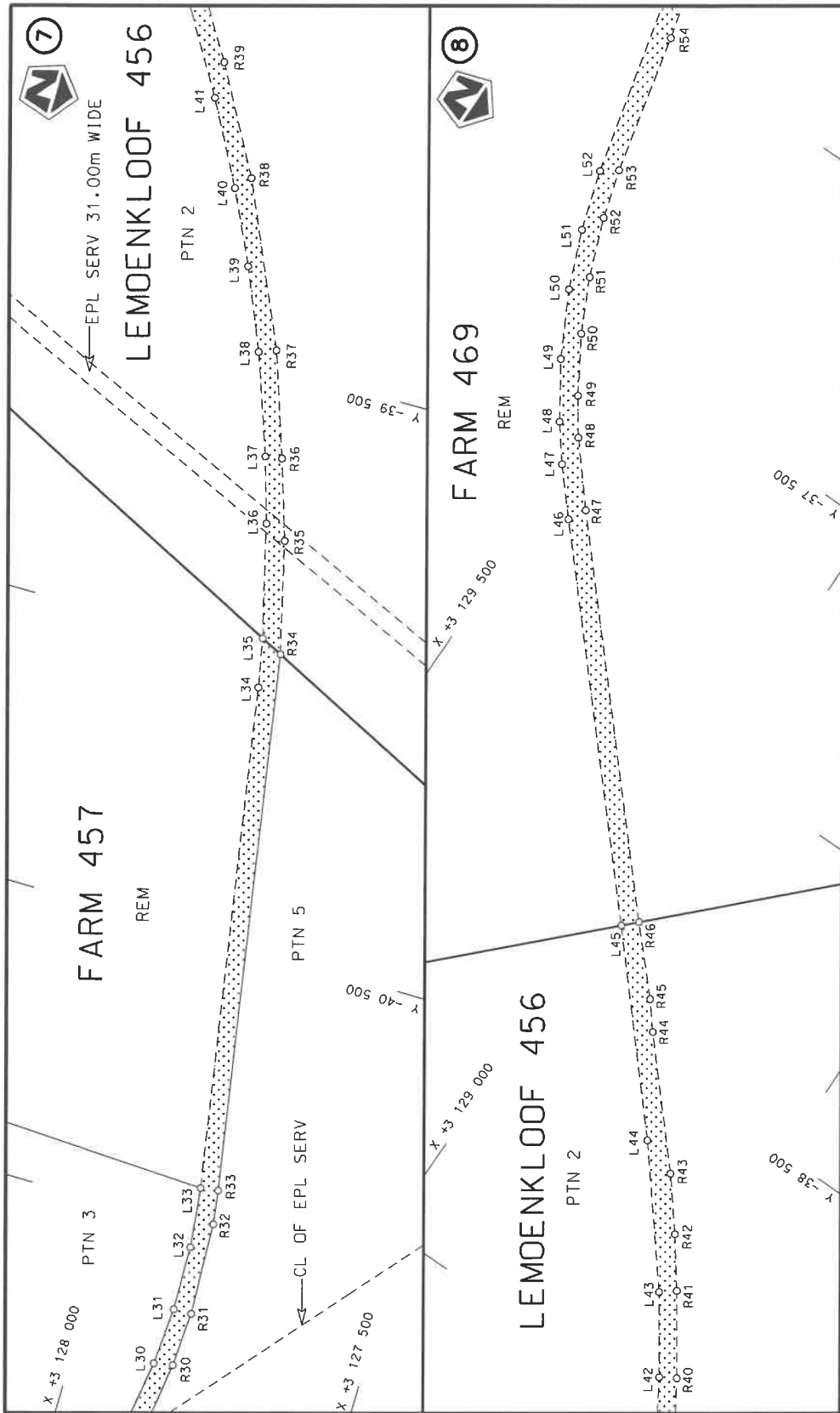
<p>Die Suid Afrikaanse Nasionale Padagentskap MSB Bpk The South African National Roads Agency SOC Ltd</p>	<p>Die figuur getoon The figure shown</p>  <p>stel die podreserwe voor van 'n gedeelte represents the road reserve of a portion van Nasionale Roete R385 of National Route Seksie Section</p> <p>3</p>	<p>Vel Sheet 1 of 13</p> <p>Plan P1236/23</p>
---	---	---



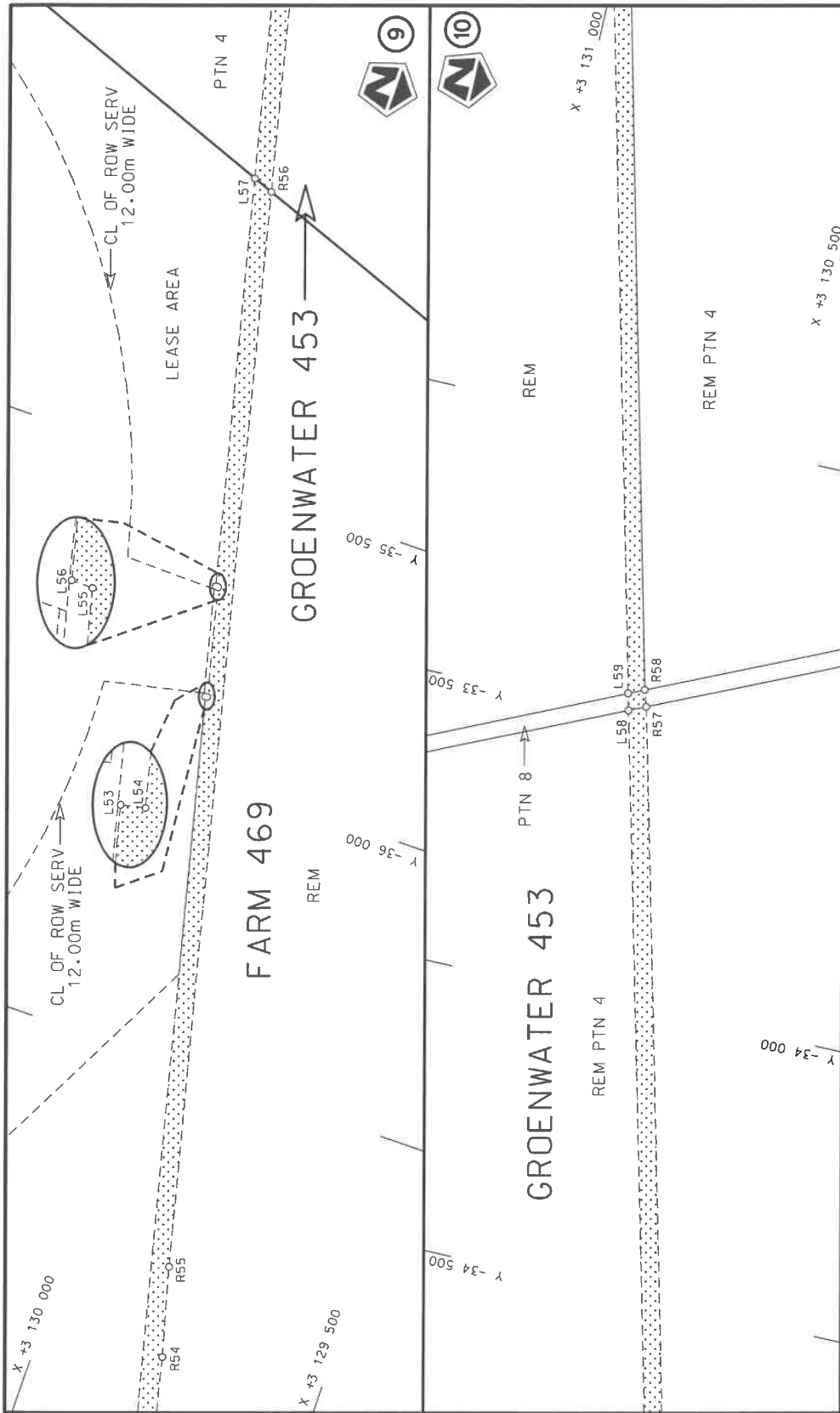
<p>Die Suid-Afrikaanse Nasionale Padagentskap MSB Bpk The South African National Roads Agency SOC Ltd</p>	<p>Die figuur getoon The figure shown</p>	<p>steidie padreserwe voor van 'n gedeelte represents the road reserve of a portion van Nasionale Roete R385 of National Route</p>	<p>Vel Sheet 2 of 13 Plan P1236/23</p>
---	---	--	--



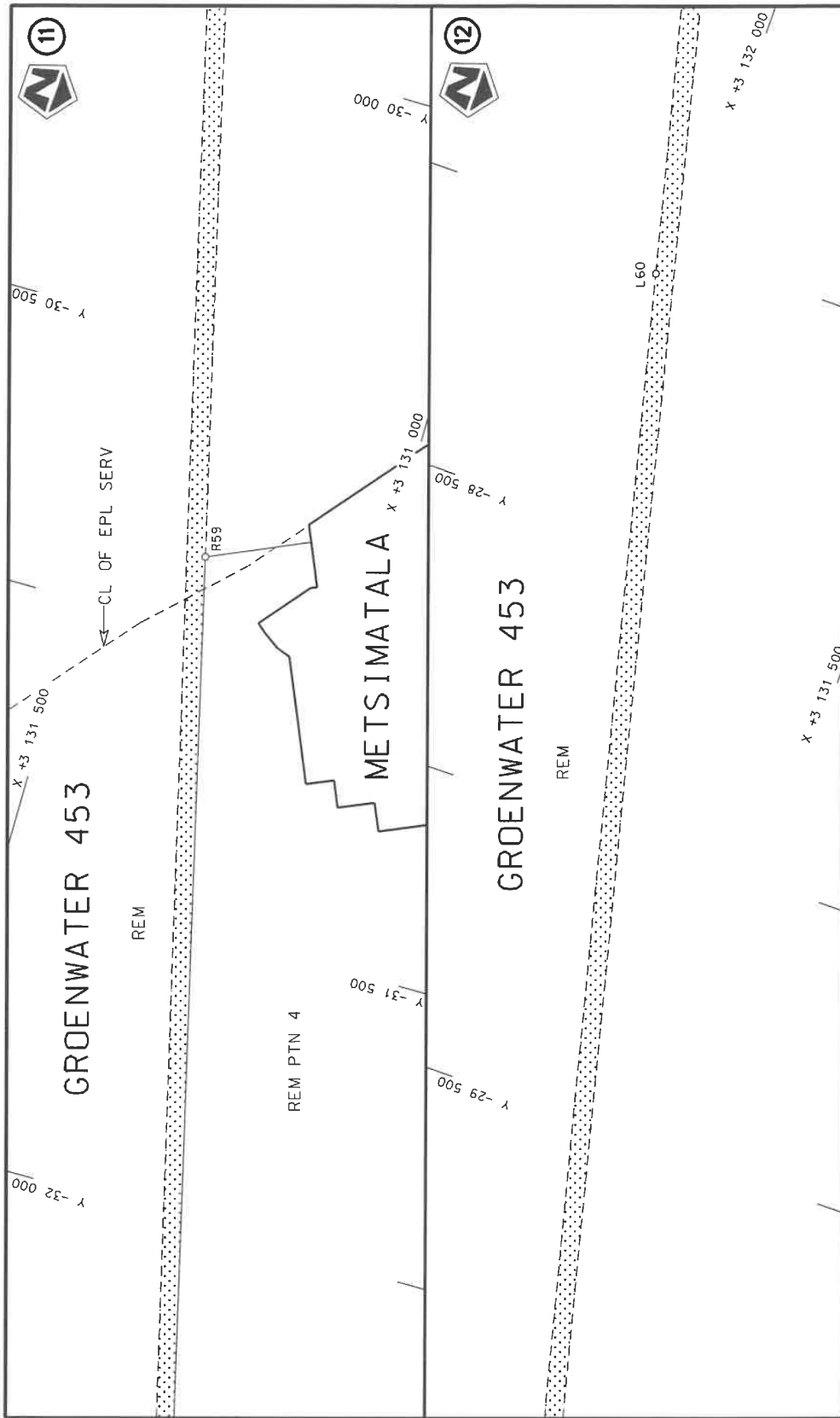
<p>Die Suid-Afrikaanse Nasionale Padagentskap MSB Bpk The South African National Roads Agency SOC Ltd</p>	<p>Die figuur getoon The figure shown</p>	<p>stelt die padreserwe voor van 'n gedeelte represents the road reserve of a portion van Nasionale Roete R385 of National Route R385</p> <p>Seksie Section</p>	<p>Vel Sheet 3 of 13</p> <p>Plan P1236/23</p>
---	---	---	---



<p>Die Suid Afrikaanse Nasionale Padagentskap MSB Bpk The South African National Roads Agency SOC Ltd</p>	<p>Die figuur getoon The figure shown</p>	<p>steil die padreserwe voor van 'n gedeelte represents the road reserve of a portion van Nasionale Roete R385 Sektie of National Route Section</p>	<p>Vel Sheet 4 of 13</p>
<p>Die figuur getoon The figure shown</p>		<p>steil die padreserwe voor van 'n gedeelte represents the road reserve of a portion van Nasionale Roete R385 Sektie of National Route Section</p>	<p>Plan P1236/23</p>

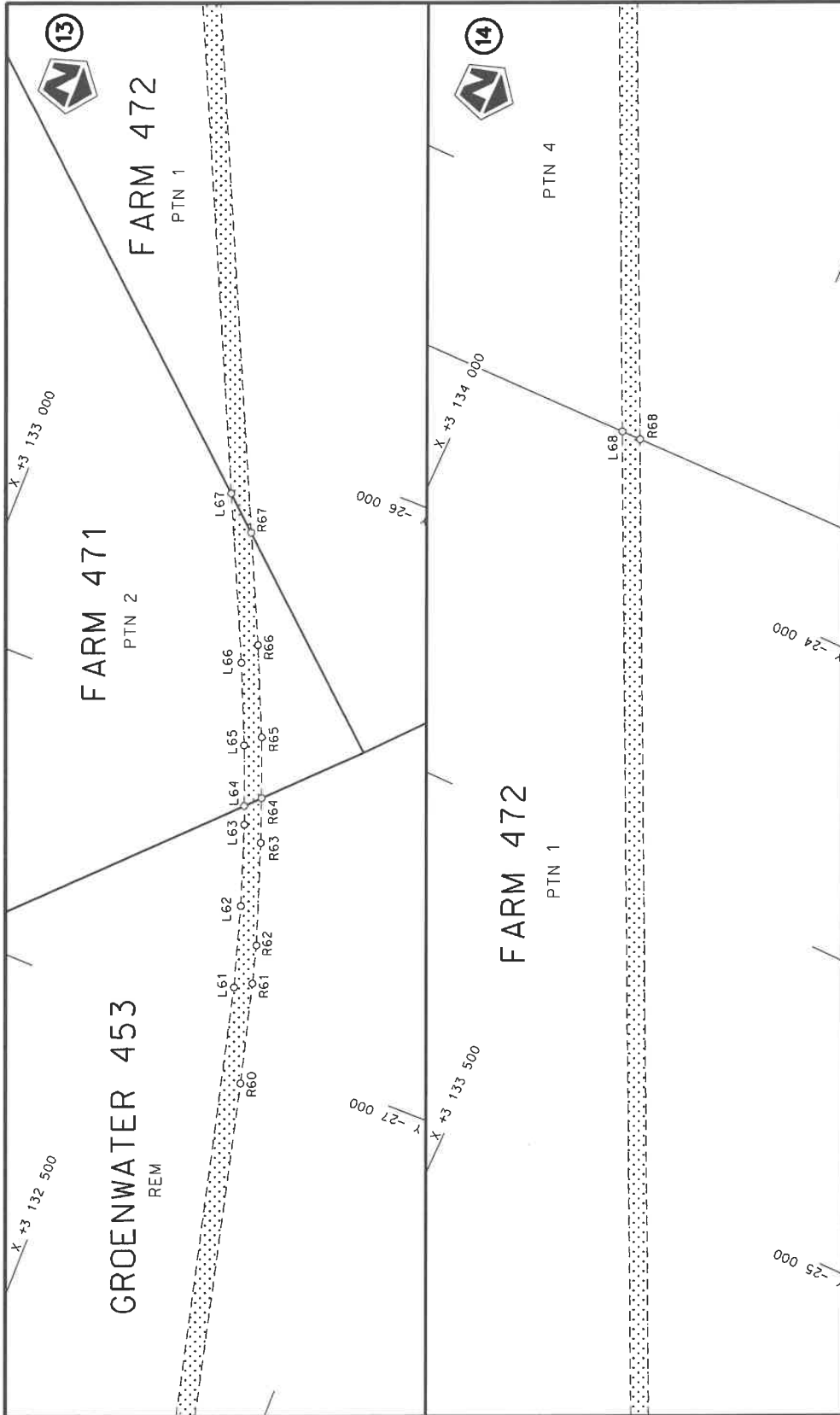


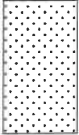
Die Suid-Afrikaanse Nasionale Padagentenskap MSB Bpk The South African National Roads Agency SOC Ltd	Die figuur getoon The figure shown	steldie padreserwe voor van 'n gedeelte represents the road reserve of a portion van Nasionale Roete R385 Sektie of National Route Section	Vel Sheet 5 of 13 Plan P1236/23
---	---------------------------------------	---	---------------------------------------

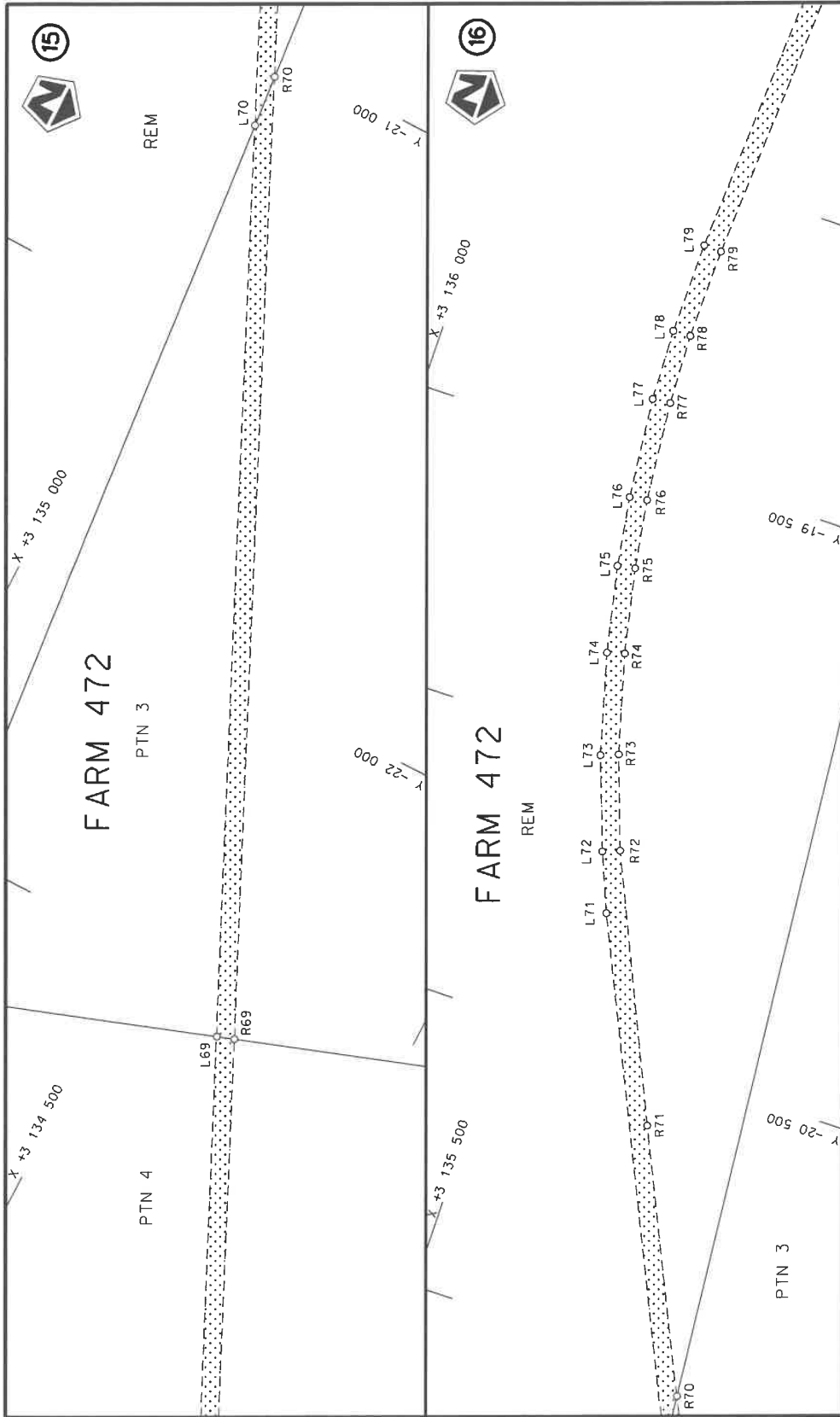


Vel Sheet 6 of 13 Plan P1236/23	steeldie padreserwe voor van 'n gedeelte represents the road reserve of a portion van Nasionale Roete R385 Sektie of National Route Section 3	Die figuur getoon The figure shown	Die Suid Afrikaanse Nasionale Padagentskap MSB Bpk The South African National Roads Agency SOC Ltd
------------------------------------	--	---------------------------------------	---

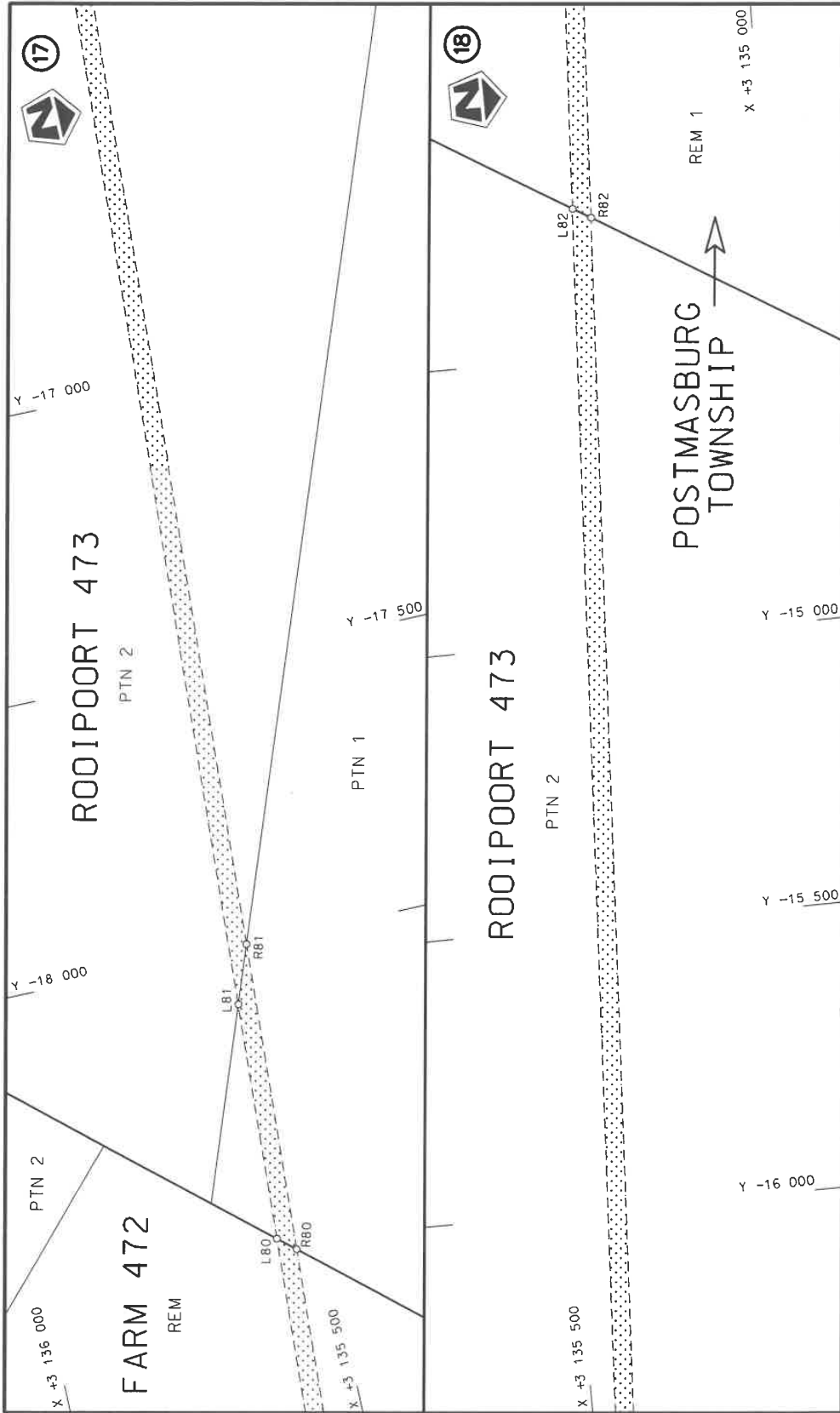




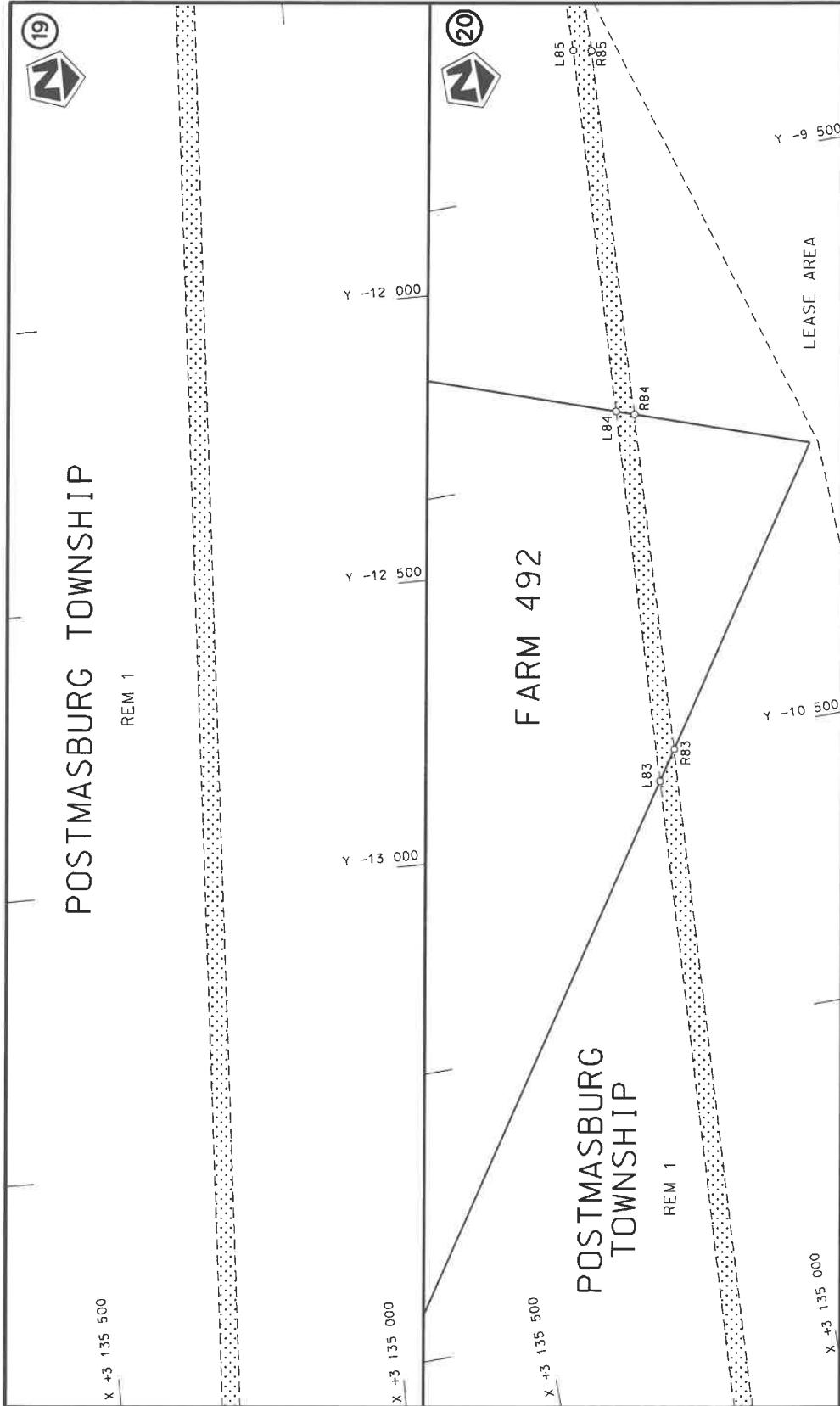
<p>Die Suid-Afrikaanse Nasionale Padagentskap MSB Bpk The South African National Roads Agency SOC Ltd</p>	<p>Die figuur getoon The figure shown</p> 	<p>steidie padreserwe voor van 'n gedeelte represents the road reserve of a portion van Nasionale Roete R385 of National Route R385 Seksie Section 3</p>	<p>Vel Sheet 7 van of 13 Plan P1236/23</p>
---	---	--	--



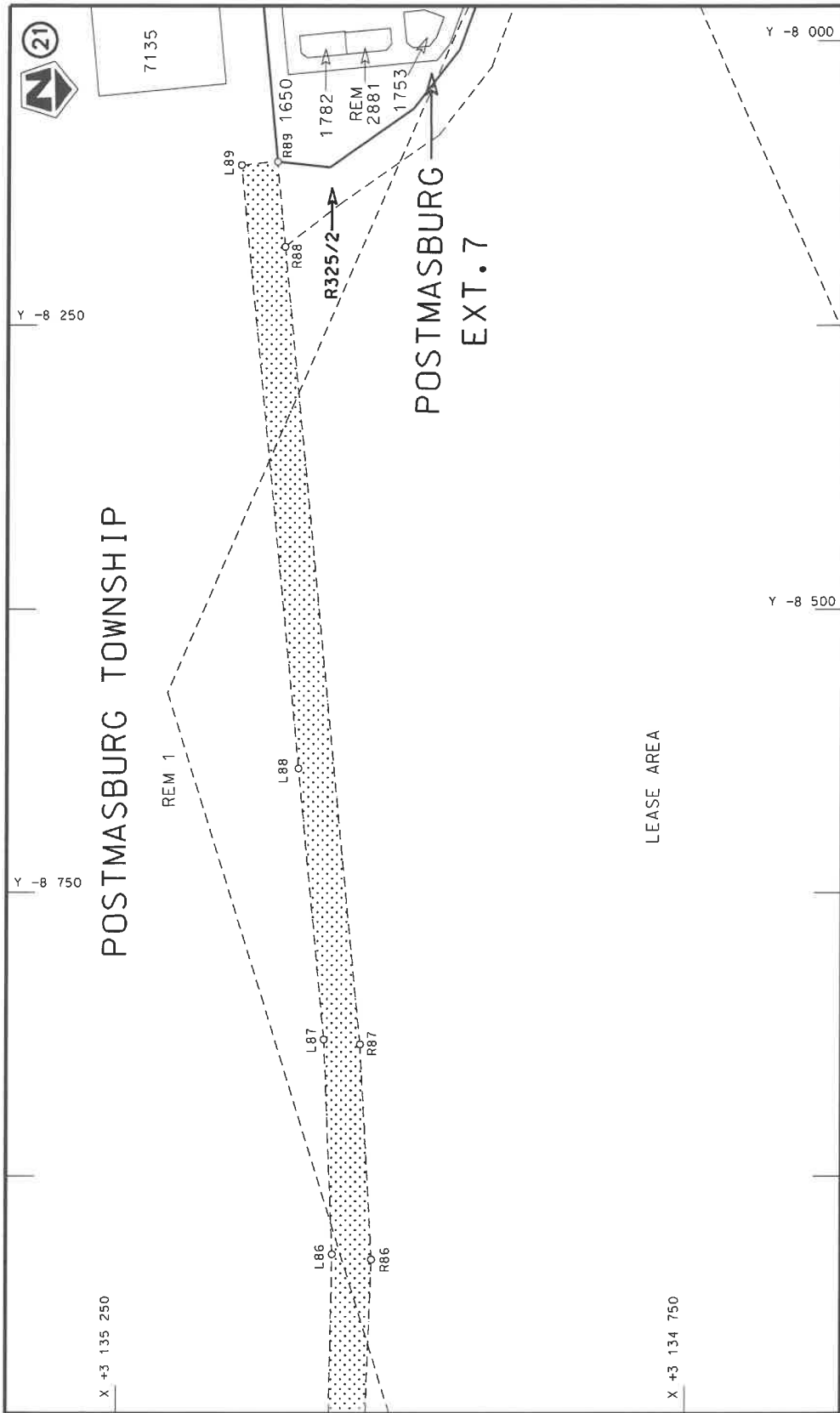
Die Suid-Afrikaanse Nasionale Padogenetskop MSB Bpk The South African National Roads Agency SOC Ltd	Die figuur getoon The figure shown	steldie padreserwe voor van 'n gedeelte represents the road reserve of a portion van Nasionale Roete R385 of National Route R385 Section	Vel Sheet 8 of 13 Plan P1236/23
--	---------------------------------------	---	------------------------------------

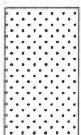


<p>Die Suid-Afrikaanse Nasionale Padagentskap MSB Epk The South African National Roads Agency SOC Ltd</p>	<p>Die figuur getoon The figure shown</p>	<p>stel die padreserwe voor van 'n gedeelte represents the road reserve of a portion van Nasionale Roete R385 Sektie of National Route Section</p>	<p>Vel Sheet 9 of 13 Plan P1236/23</p>
---	---	--	--



<p>Die Suid Afrikaanse Nasionale Padagentskap MSB Bpk The South African National Roads Agency SOC Ltd</p>	<p>Die figuur getoon The figure shown</p>	<p>stel die padreserwe voor van 'n gedeelte represents the road reserve of a portion van Nasionale Roete R385 Sektie of National Route Section</p>	<p>Vel Sheet 10 of 13 Plan P1236/23</p>
---	---	--	---



Die Suid Afrikaanse Nasionale Padagentskap MSB Bpk The South African National Roads Agency SOC Ltd	Die figuur getoon The figure shown		steeldie padreserwe voor van 'n gedeelte represents the road reserve of a portion van Nasionale Roete R.385 of National Route Seksie Section R.385	Vel Sheet 11 of 13 Plan P1236/23
---	---------------------------------------	---	---	-------------------------------------

PADRESERWE KOÖRDINATE / ROAD RESERVE CO-ORDINATES						
LINKERKANT/LEFT HAND SIDE			REGTERKANT/RIGHT HAND SIDE			
	Y	X	WG23 <sup>o</sup>		Y	X
L1	-54 903.74	3 127 675.47	R1	-54 904.32	3 127 644.08	
L2	-54 747.49	3 127 708.01	R2	-54 883.43	3 127 647.31	
L3	-54 571.18	3 127 746.18	R3	-54 780.92	3 127 669.22	
L4	-54 351.80	3 127 791.05	R4	-54 742.67	3 127 640.86	
L5	-54 059.93	3 127 858.02	R5	-54 605.90	3 127 666.38	
L6	-53 871.66	3 127 889.25	R6	-54 576.45	3 127 712.92	
L7	-53 664.96	3 127 931.56	R7	-54 347.37	3 127 759.76	
L8	-53 629.90	3 127 956.43	R8	-54 096.33	3 127 801.74	
L9	-53 628.67	3 127 981.02	R9	-54 048.41	3 127 811.55	
L10	-53 597.01	3 127 980.86	R10	-53 829.51	3 127 865.47	
L11	-53 597.75	3 127 963.53	R11	-52 316.55	3 128 175.01	
L12	-53 578.93	3 127 950.36	R12	-47 914.37	3 129 076.78	
L13	-52 352.17	3 128 200.30	R13	-47 806.98	3 129 098.78	
L14	-47 956.01	3 129 100.25	R14	-45 675.56	3 129 535.21	
L15	-47 785.91	3 129 135.07	R15	-45 595.26	3 129 548.55	
L16	-45 616.18	3 129 579.24	R16	-45 474.47	3 129 558.96	
L17	-45 496.64	3 129 589.61	R17	-45 324.41	3 129 554.76	
L18	-45 420.28	3 129 591.66	R18	-45 264.71	3 129 547.80	
L19	-45 331.03	3 129 584.94	R19	-45 176.64	3 129 531.85	
L20	-45 247.04	3 129 575.92	R20	-45 089.04	3 129 509.20	
L21	-45 141.60	3 129 555.46	R21	-45 032.23	3 129 490.65	
L22	-45 048.82	3 129 529.15	R22	-44 929.96	3 129 448.96	
L23	-44 933.75	3 129 484.73	R23	-43 504.75	3 128 792.50	
L24	-43 481.32	3 128 816.65	R24	-41 974.04	3 128 088.57	
L25	-41 974.28	3 128 123.39	R25	-41 953.89	3 128 079.09	
L26	-41 957.13	3 128 117.56	R26	-41 630.00	3 127 930.45	
L27	-41 579.49	3 127 942.46	R27	-41 554.78	3 127 898.91	
L28	-41 445.92	3 127 896.01	R28	-41 481.28	3 127 873.49	
L29	-41 348.21	3 127 872.68	R29	-41 322.67	3 127 835.84	
L30	-41 247.68	3 127 857.47	R30	-41 241.53	3 127 824.88	
L31	-41 146.61	3 127 850.63	R31	-41 146.08	3 127 818.87	
L32	-41 033.61	3 127 853.01	R32	-40 983.69	3 127 825.90	
L33	-40 928.66	3 127 864.74	R33	-40 924.20	3 127 833.93	
L34	-40 051.97	3 128 012.80	R34	-39 985.57	3 127 991.91	
L35	-39 966.89	3 128 029.82	R35	-39 790.74	3 128 040.38	
L36	-39 770.11	3 128 079.90	R36	-39 652.61	3 128 085.51	
L37	-39 657.26	3 128 114.59	R37	-39 472.40	3 128 148.20	
L38	-39 483.62	3 128 177.50	R38	-39 194.03	3 128 275.10	
L39	-39 344.27	3 128 237.37	R39	-39 011.69	3 128 378.39	
L40	-39 218.44	3 128 298.29	R40	-38 929.24	3 128 430.23	
L41	-39 076.17	3 128 376.43	R41	-38 802.37	3 128 517.75	
L42	-38 945.46	3 128 456.65	R42	-38 722.22	3 128 577.14	
L43	-38 821.79	3 128 542.24	R43	-38 638.82	3 128 644.32	
L44	-38 613.65	3 128 711.40	R44	-38 451.04	3 128 811.69	
L45	-38 328.04	3 128 964.54	R45	-38 405.87	3 128 848.60	
L46	-37 790.24	3 129 448.70	R46	-38 305.50	3 128 942.01	
L47	-37 716.98	3 129 513.15	R47	-37 760.33	3 129 432.76	
L48	-37 657.72	3 129 559.42	R48	-37 662.15	3 129 516.37	
L49	-37 565.80	3 129 620.67	R49	-37 601.88	3 129 558.81	
L50	-37 456.83	3 129 678.46	R50	-37 508.92	3 129 616.17	
L51	-37 357.99	3 129 719.30	R51	-37 418.80	3 129 660.68	

Vel 12 Van 13  
Sheet of

P1236/23

PADRESERWE KOÖRDINATE / ROAD RESERVE CO-ORDINATES						
LINKERKANT/LEFT HAND SIDE			REGTERKANT/RIGHT HAND SIDE			
	Y	X	WG23 <sup>o</sup>		Y	X
L52	-37 255.23	3 129	752.00	R52	-37 319.26	3 129 699.68
L53	-35 869.34	3 130	096.75	R53	-37 235.25	3 129 724.93
L54	-35 868.61	3 130	093.33	R54	-36 992.46	3 129 782.04
L55	-35 678.97	3 130	139.82	R55	-36 838.40	3 129 823.45
L56	-35 678.88	3 130	144.13	R56	-34 993.13	3 130 282.55
L57	-34 980.01	3 130	317.98	R57	-33 480.21	3 130 658.96
L58	-33 493.15	3 130	687.85	R58	-33 451.49	3 130 668.11
L59	-33 463.75	3 130	695.16	R59	-30 866.99	3 131 307.85
L60	-28 052.21	3 132	041.33	R60	-27 058.20	3 132 256.05
L61	-26 905.67	3 132	329.04	R61	-26 887.60	3 132 301.33
L62	-26 768.57	3 132	370.63	R62	-26 822.79	3 132 319.58
L63	-26 633.54	3 132	418.08	R63	-26 652.77	3 132 379.29
L64	-26 603.68	3 132	429.81	R64	-26 579.77	3 132 406.48
L65	-26 504.34	3 132	469.91	R65	-26 479.70	3 132 446.54
L66	-26 371.26	3 132	528.34	R66	-26 331.72	3 132 512.70
L67	-26 102.42	3 132	654.69	R67	-26 153.42	3 132 596.50
L68	-23 814.25	3 133	730.10	R68	-23 813.91	3 133 696.02
L69	-22 575.70	3 134	312.19	R69	-22 565.44	3 134 282.77
L70	-21 126.91	3 134	993.11	R70	-21 035.72	3 135 001.71
L71	-20 273.19	3 135	394.34	R71	-20 602.64	3 135 205.25
L72	-20 172.77	3 135	436.29	R72	-20 161.57	3 135 407.30
L73	-20 013.76	3 135	494.47	R73	-20 002.25	3 135 464.56
L74	-19 839.57	3 135	542.51	R74	-19 831.11	3 135 512.27
L75	-19 689.66	3 135	574.77	R75	-19 683.74	3 135 543.89
L76	-19 568.71	3 135	593.82	R76	-19 563.91	3 135 562.95
L77	-19 393.06	3 135	611.55	R77	-19 390.04	3 135 580.10
L78	-19 268.73	3 135	616.33	R78	-19 267.45	3 135 585.17
L79	-19 109.60	3 135	613.96	R79	-19 110.58	3 135 582.76
L80	-18 517.12	3 135	580.85	R80	-18 542.93	3 135 551.01
L81	-18 099.45	3 135	557.50	R81	-17 999.14	3 135 520.58
L82	-14 238.80	3 135	341.72	R82	-14 257.42	3 135 311.27
L83	-10 563.65	3 135	136.31	R83	-10 512.07	3 135 101.75
L84	-9 905.62	3 135	099.53	R84	-9 916.52	3 135 068.43
L85	-9 266.11	3 135	063.79	R85	-9 272.47	3 135 032.40
L86	-9 068.61	3 135	059.83	R86	-9 073.35	3 135 025.35
L87	-8 879.39	3 135	067.89	R87	-8 883.82	3 135 035.73
L88	-8 640.44	3 135	090.63	R88	-8 180.97	3 135 104.13
L89	-8 109.23	3 135	142.57	R89	-8 106.18	3 135 111.41

Vel Sheet	13	Van of	13	P1236/23
-----------	----	--------	----	----------