

---

**GOVERNMENT NOTICE  
GOEWERMENTSKENNISGEWING**

---

**DEPARTMENT OF TRANSPORT  
DEPARTEMENT VAN VERVOER**

No. 409

11 April 2008

**THE SOUTH AFRICAN NATIONAL ROAD AGENCY LIMITED**

**DECLARATION OF NATIONAL ROAD R21 (ALSO KNOWN AS THE P157-1 AND P157/2)  
SECTIONS 1 AND 2: HANS STRYDOM DRIVE TO RIETFONTEIN INTERCHANGE (N12):  
PROVINCE OF GAUTENG.**

By virtue of section 40(1)(a) of the South African National Road Agency Limited and National Roads Act, 1998 (Act No. 7 of 1998), I hereby declare the Section of road as depicted on the attached Plan P653/08 sheets 1 to 26, as a National Road.

**[R21 Sections 1 and 2: Hans Strydom Drive – Rietfontein Interchange (N12)]**

  
\_\_\_\_\_  
MINISTER OF TRANSPORT

No. 409

11 April 2008

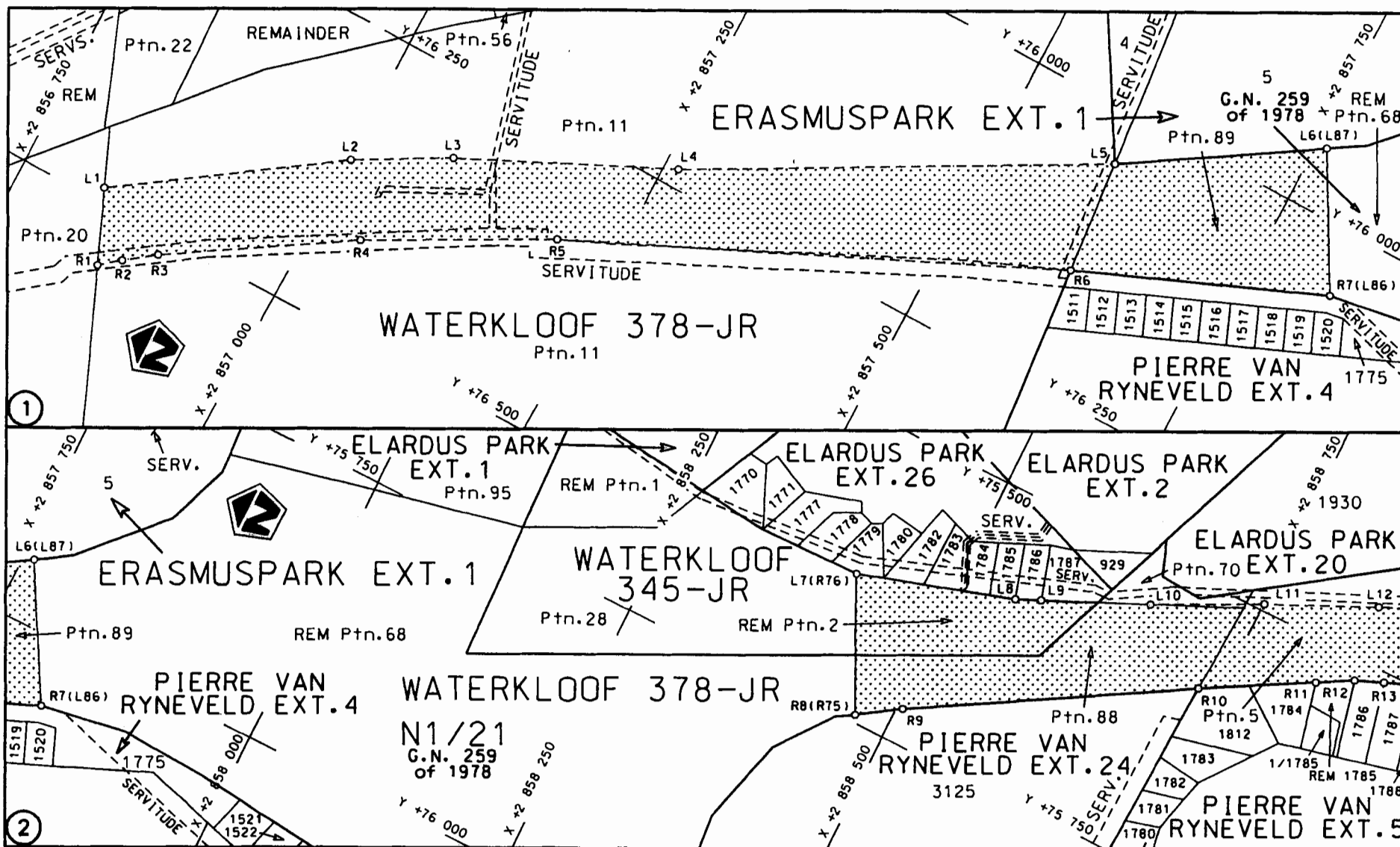
**DIE SUID-AFRIKAANSE NASIONALE PADAGENTSAP BEPERK**

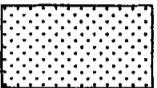
**VERKLARING VAN NASIONALE PAD R21 (OOK BEKEND AS DIE P157-1 EN P157/2)  
SEKSIES 1 EN 2: HANS STRYDOMWEG TOT RIETFONTEIN WISSELAAR (N12): PROVINSIE  
VAN GAUTENG.**

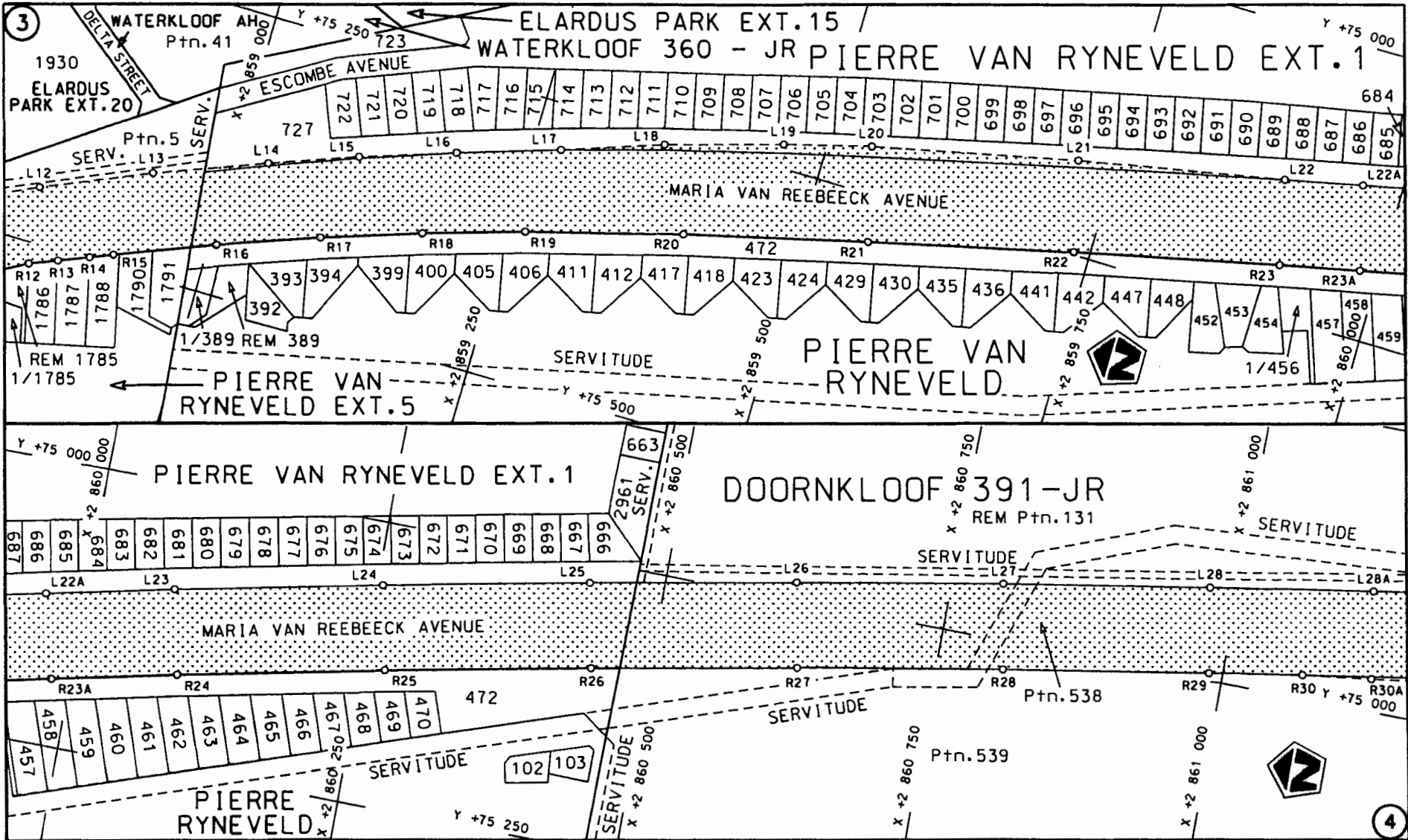
Kragtens Artikel 40(1)(a) van die Suid-Afrikaanse Nasionale Padagentskap Beperk en Nasionale Paaie Wet, 1998 (Wet No. 7 van 1998), verklaar ek hiermee die Gedeelte pad soos aangedui op die aangehegte Plan P653/08 velle 1 tot 26, as 'n Nasionale Pad.

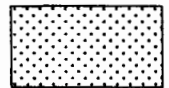
**[R21 Seksies 1 en 2: Hans Strydomweg – Rietfontein Wisselaar (N12)]**

  
\_\_\_\_\_  
MINISTER VAN VERVOER



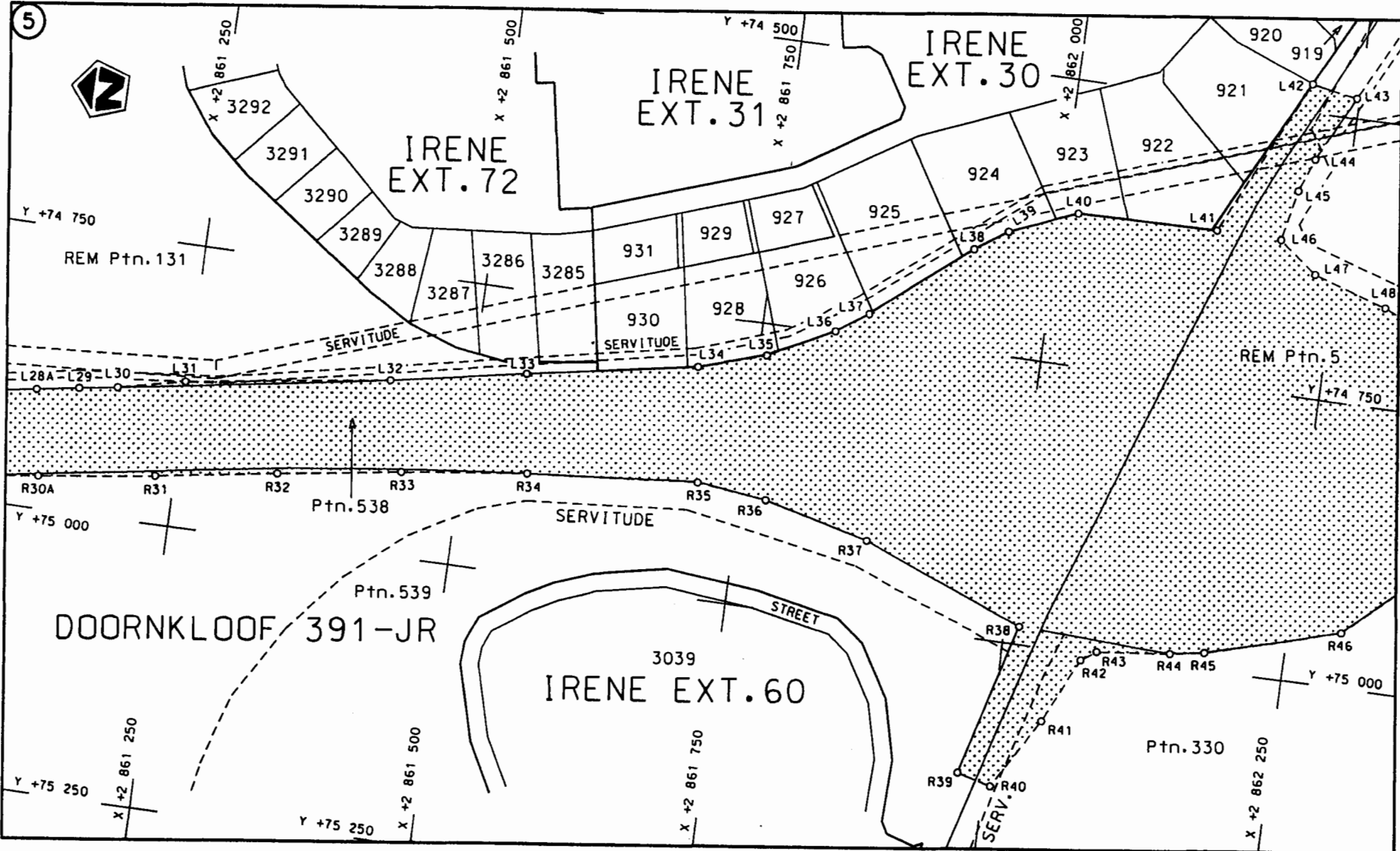
<p>Die Suid Afrikaanse Nasionale Padagentskap Beperk</p>	<p>Die figuur getoon</p>		<p>Vel Sheet 1 van 26</p>
<p>The South African National Roads Agency Limited</p>	<p>The figure shown</p>	<p>steldie padreserwe voor van 'n gedeelte represents the road reserve of a portion van Nasionale Roete of National Route R21 Seksie Section 1</p>	<p>Plan P653/08</p>

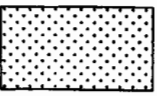


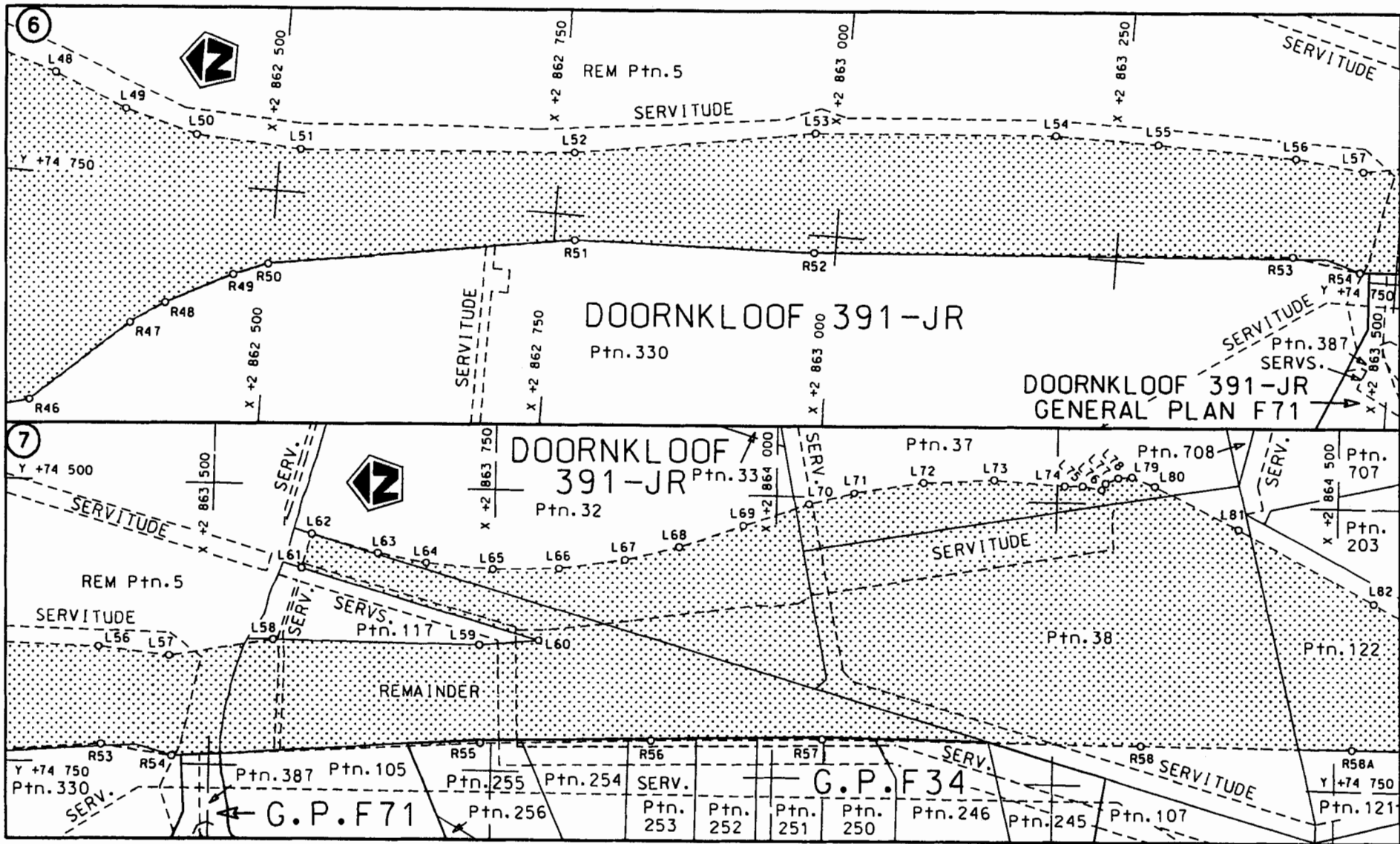
<p>Die Suid Afrikaanse Nasionale Padagentskop Beperk The South African National Roads Agency Limited</p>	<p>Die figuur getoon The figure shown</p> 	<p>steldie podreserve voor van 'n gedeelte represents the rood reserve of a portion von Nasionale Roete R21 Seksie of National Route R21 Section 1</p>	<p>Vel Sheet 2 van 26 Plan P653/08</p>
--	--	--	--

STAATSKOERANT, 11 APRIL 2008

No. 30961 5



Die Suid Afrikaanse Nasionale Padagentskap Beperk	Die figuur getoon		steldie padreserwe voor van 'n gedeelte represents the rood reserve of a portion von Nasionale Roete R21 Seksie Section of National Route 1	Vel Sheet 3 van of 26
The South African National Roads Agency Limited	The figure shown		Plan P653/08	



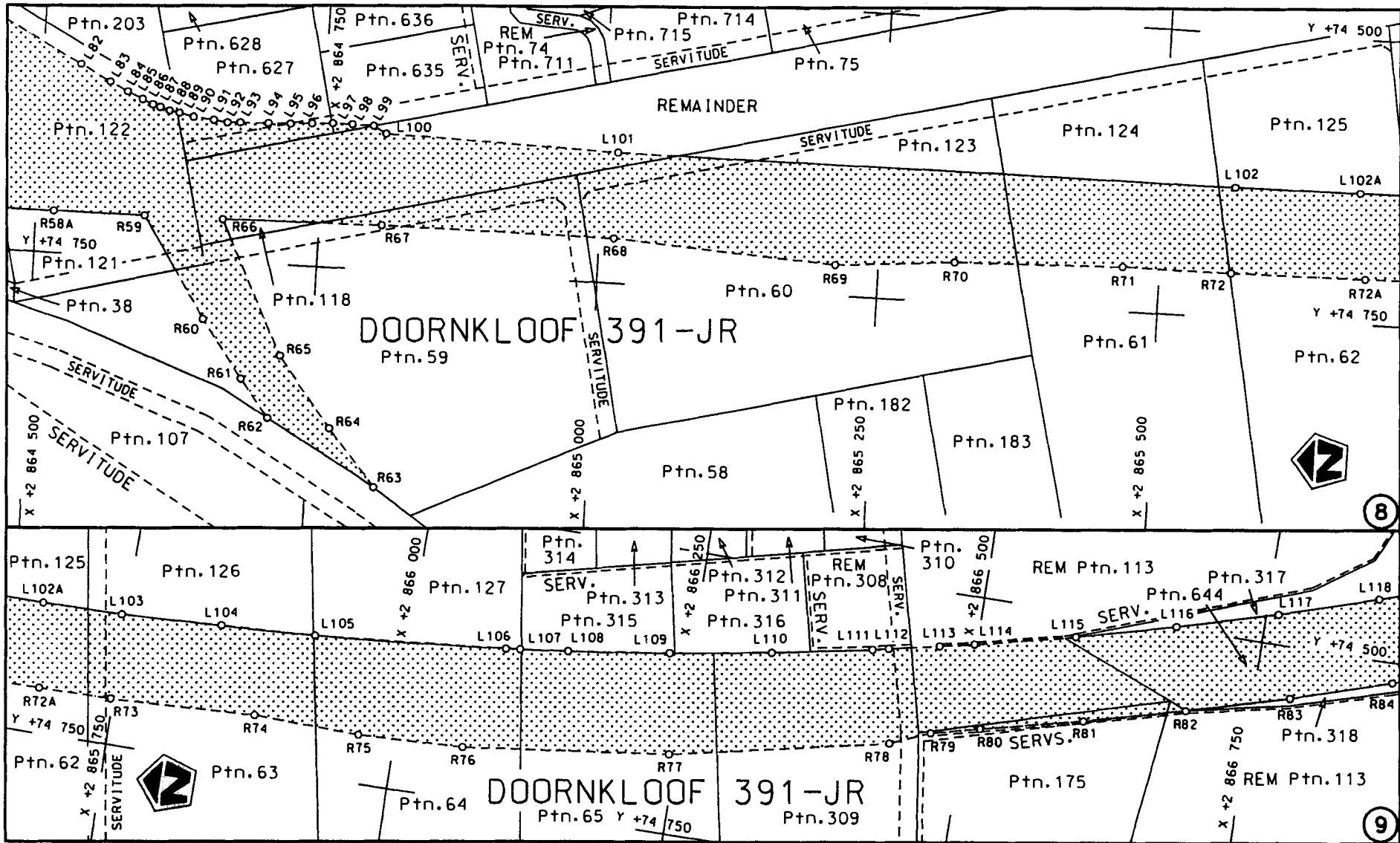
Die Suid Afrikaanse Nasionale Padagentskap Beperk  
The South African National Roads Agency Limited

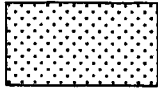
Die figuur getoon  
The figure shown

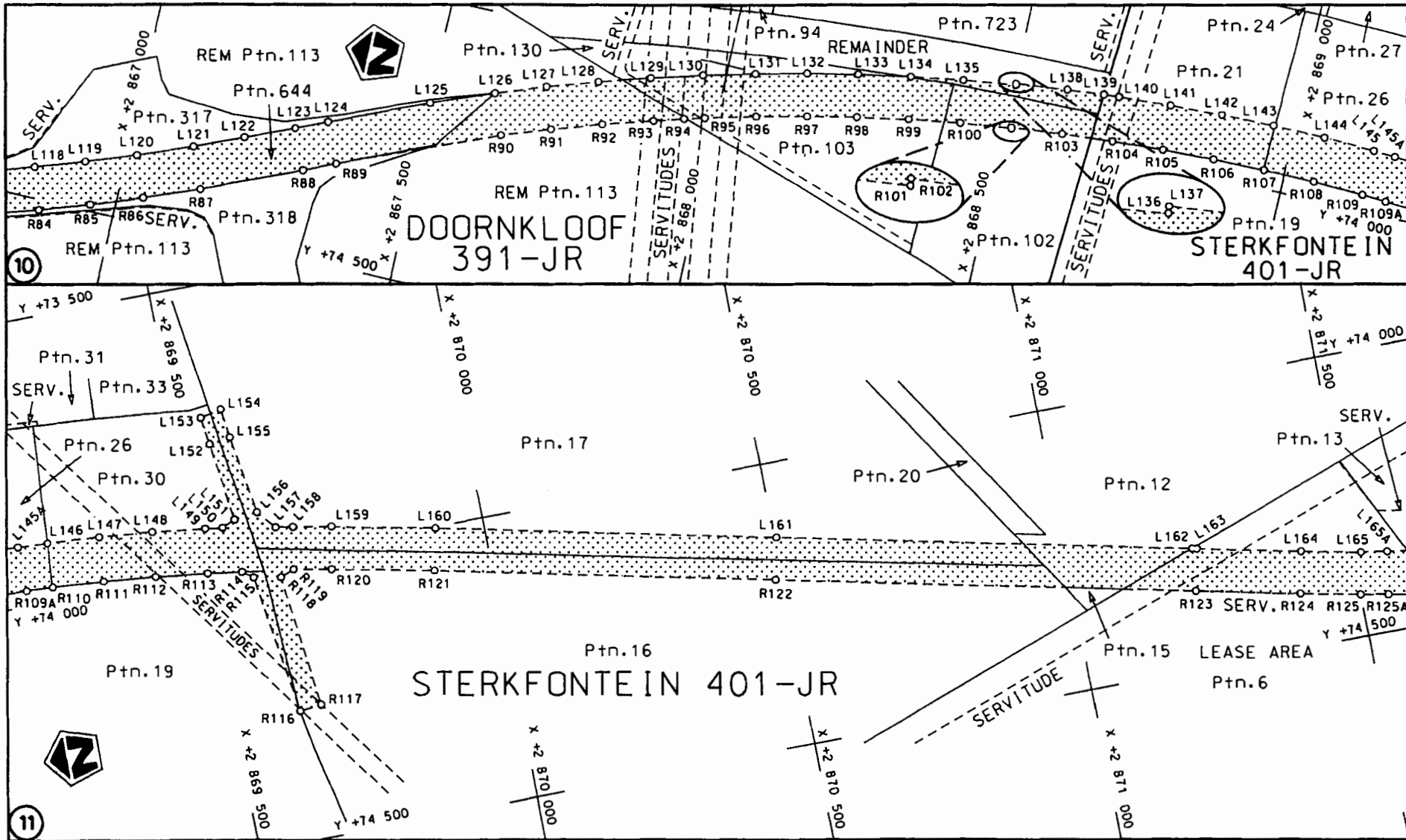


steldie padreserwe voor van 'n gedeelte  
represents the road reserve of a portion  
van Nasionale Roete R21 Seksie  
of National Route Section 1

Vel Sheet 4 van of 26  
Plan P653/08

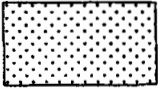


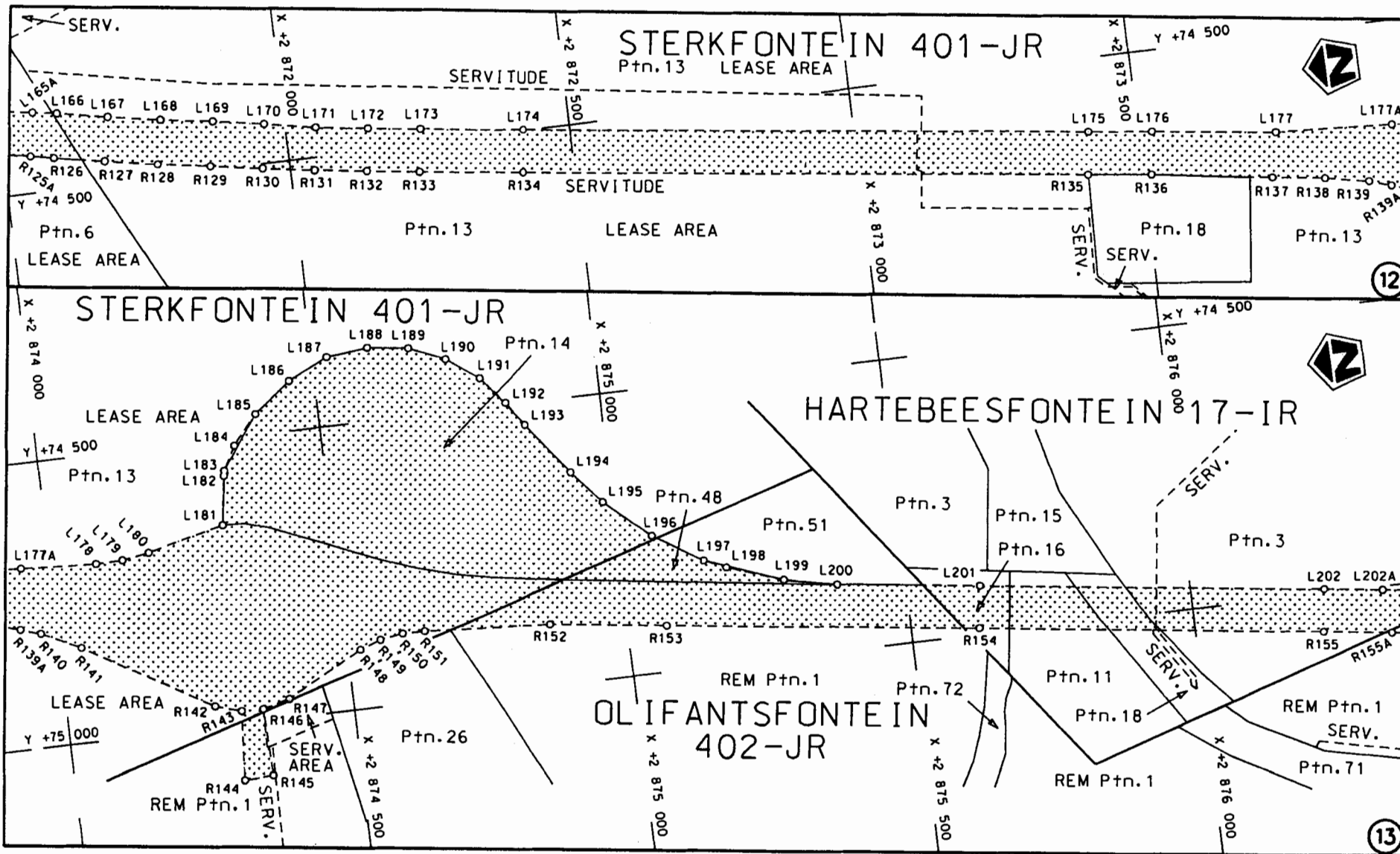
<p>Die Suid Afrikaanse Nasionale Padagentskap Beperk The South African National Roads Agency Limited</p>	<p>Die figuur getoon The figure shown</p> 	<p>steldie podreserwe voor van 'n gedeelte represents the road reserve of a portion van Nasionale Roete R21 of National Route R21</p> <p>Seksie Section 1</p>	<p>Vel Sheet 5 van of 26 Plon P653/08</p>
--	--	---	---

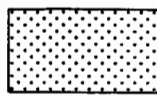


STAATSKOERANT, 11 APRIL 2008

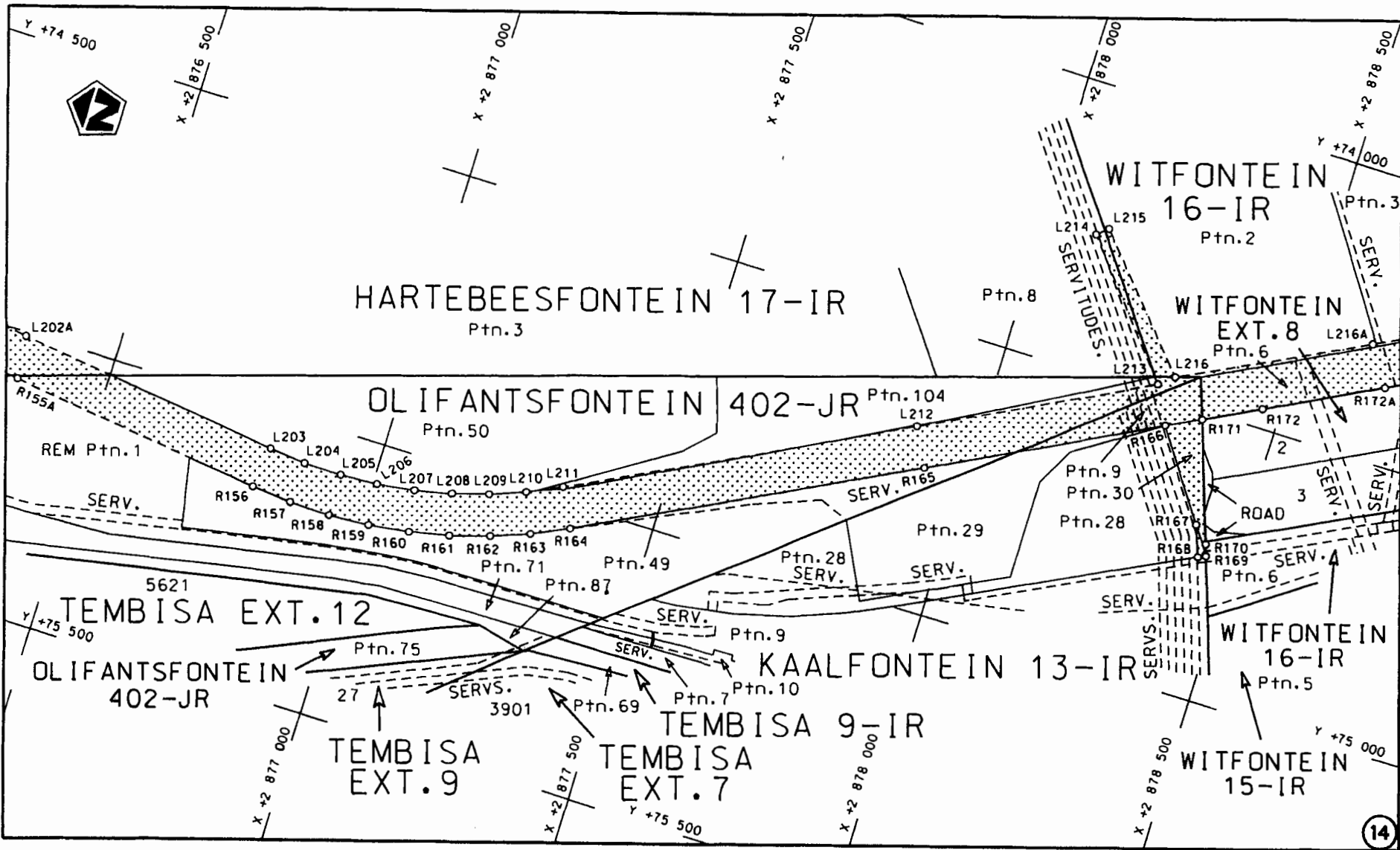
No. 30961 9


<p>Die Suid Afrikaanse Nasionale Padagentskap Beperk The South African National Roads Agency Limited</p>	<p>Die figuur getoon The figure shown</p> 	<p>steldie padreserwe voor van 'n gedeelte represents the road reserve of a portion van Nasionale Roete R21 of Nasionale of National Route R21 Seksie Section 1</p>	<p>Vel Sheet 6 van of 26 Plan P653/08</p>
--	--	---	---

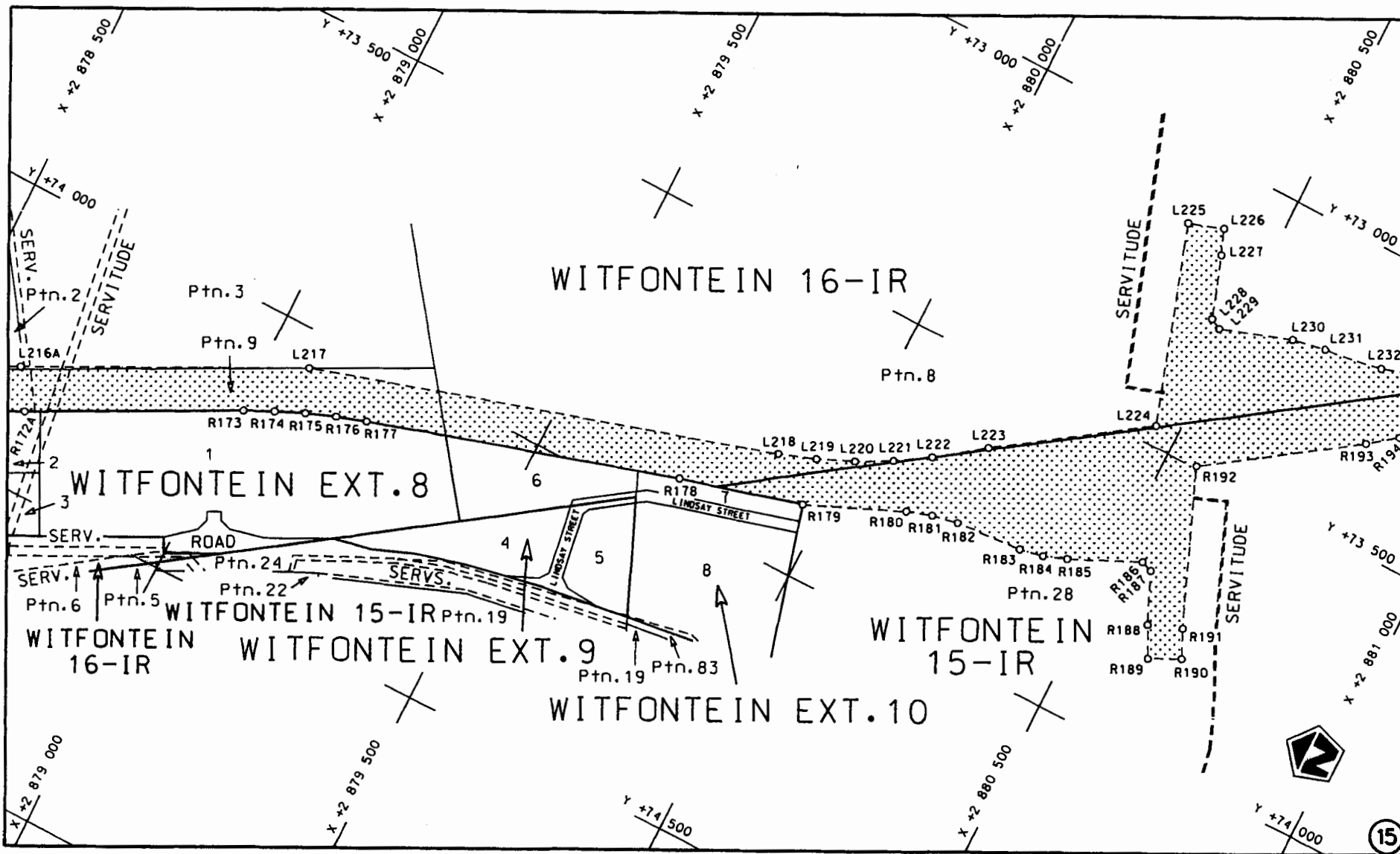


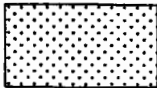
<p>Die Suid Afrikaanse Nasionale Podagentskap Beperk The South African National Roads Agency Limited</p>	<p>Die figuur getoon The figure shown</p>		<p>steldie padreserwe voor van 'n gedeelte represents the road reserve of a portion van Nasionale Roete R21 Sektie 1 + 2 of National Route Section 1 + 2</p>	<p>Vel Sheet 7 van of 26 Plan P653/08</p>
--	---	--	--	---

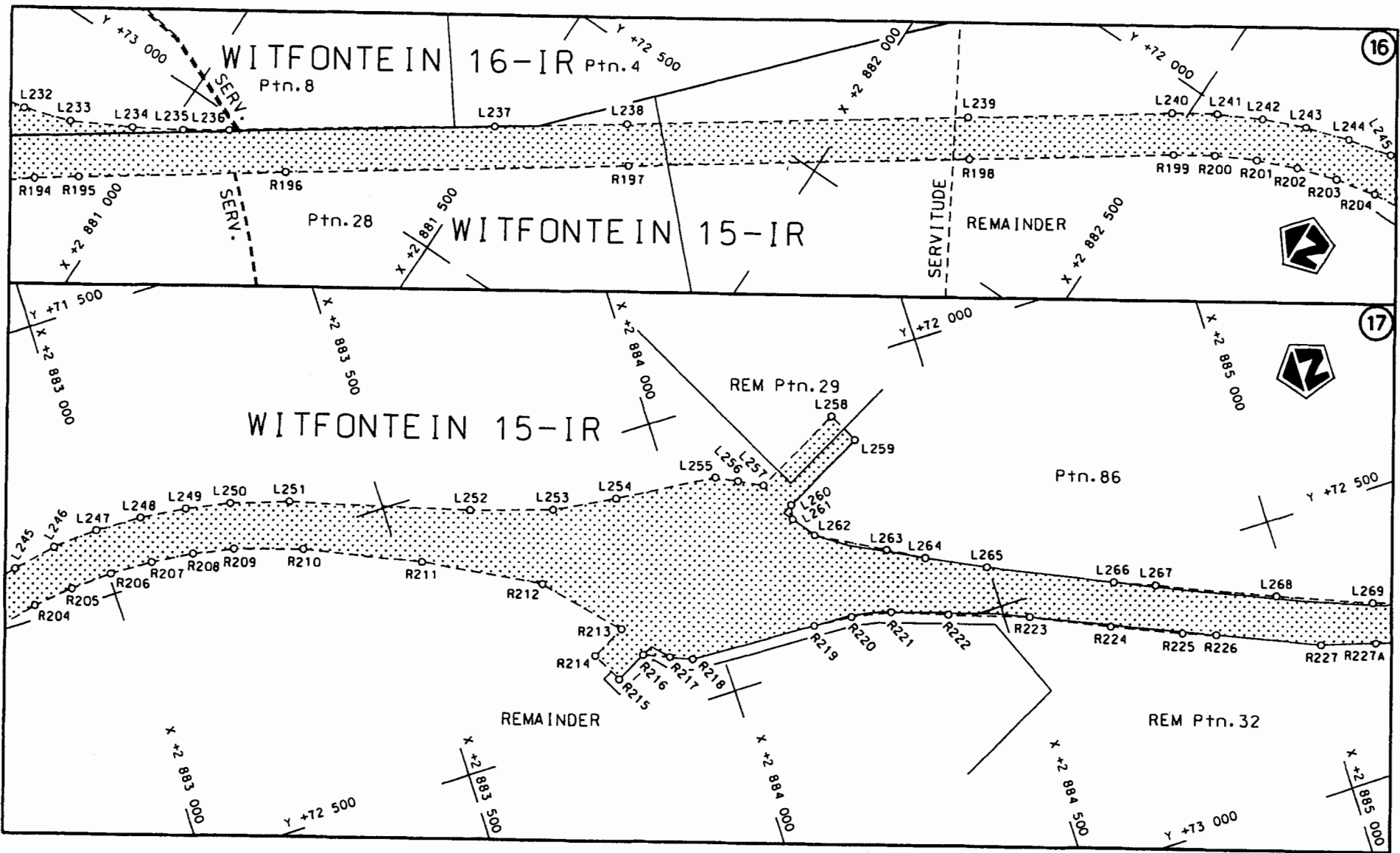


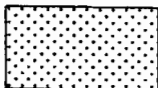


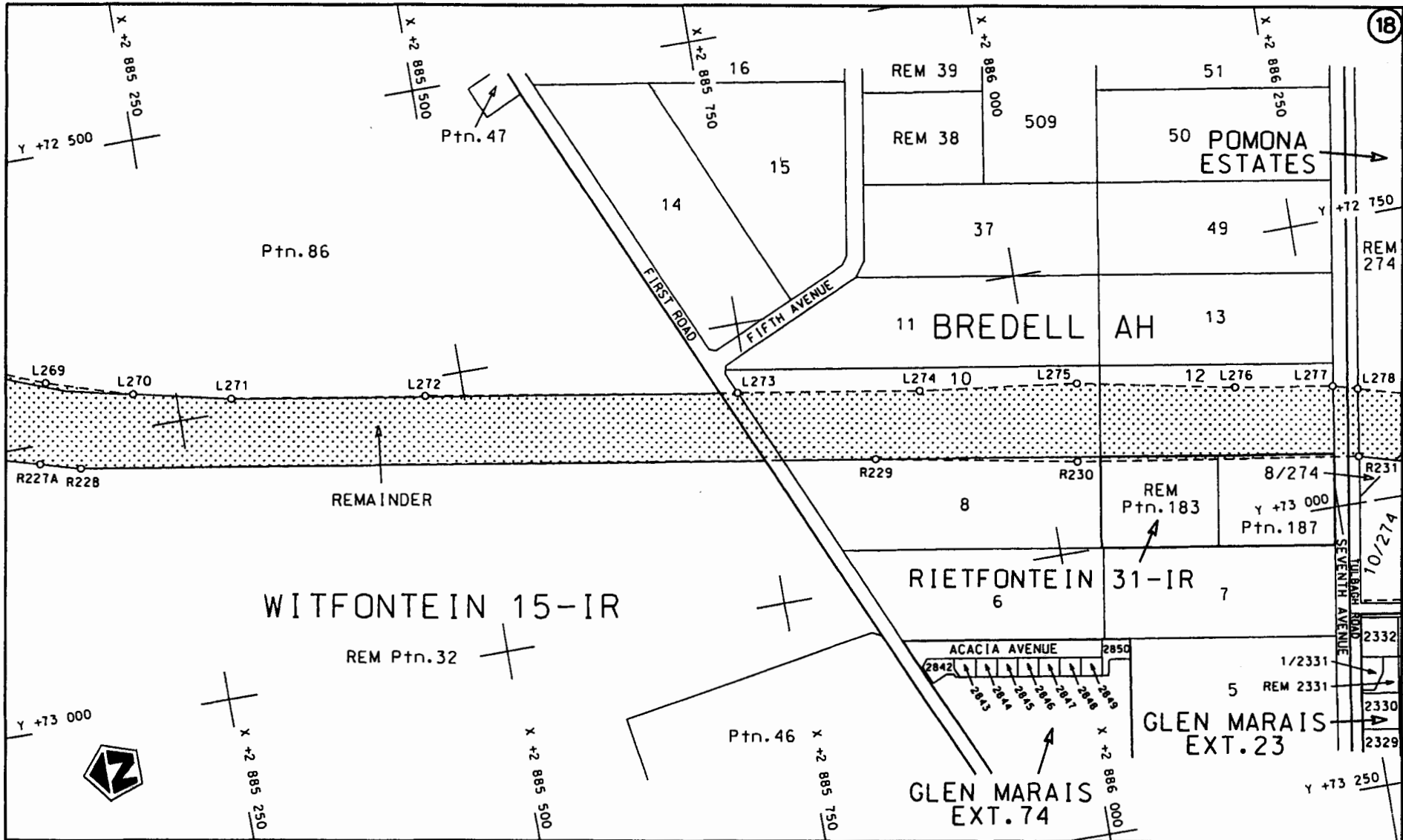
<p>Die Suid Afrikaanse Nasionale Padagentskap Beperk The South African National Roads Agency Limited</p>	<p>Die figuur getoon The figure shown</p> 	<p>steldie padreserwe voor van 'n gedeelte represents the road reserve of a portion van Nasionale Roete R21 Seksie of National Route R21 Section 2</p>	<p>Vel Sheet 8 van 26 Plan P653/08</p>
--	--	--	--

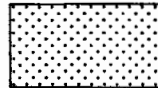


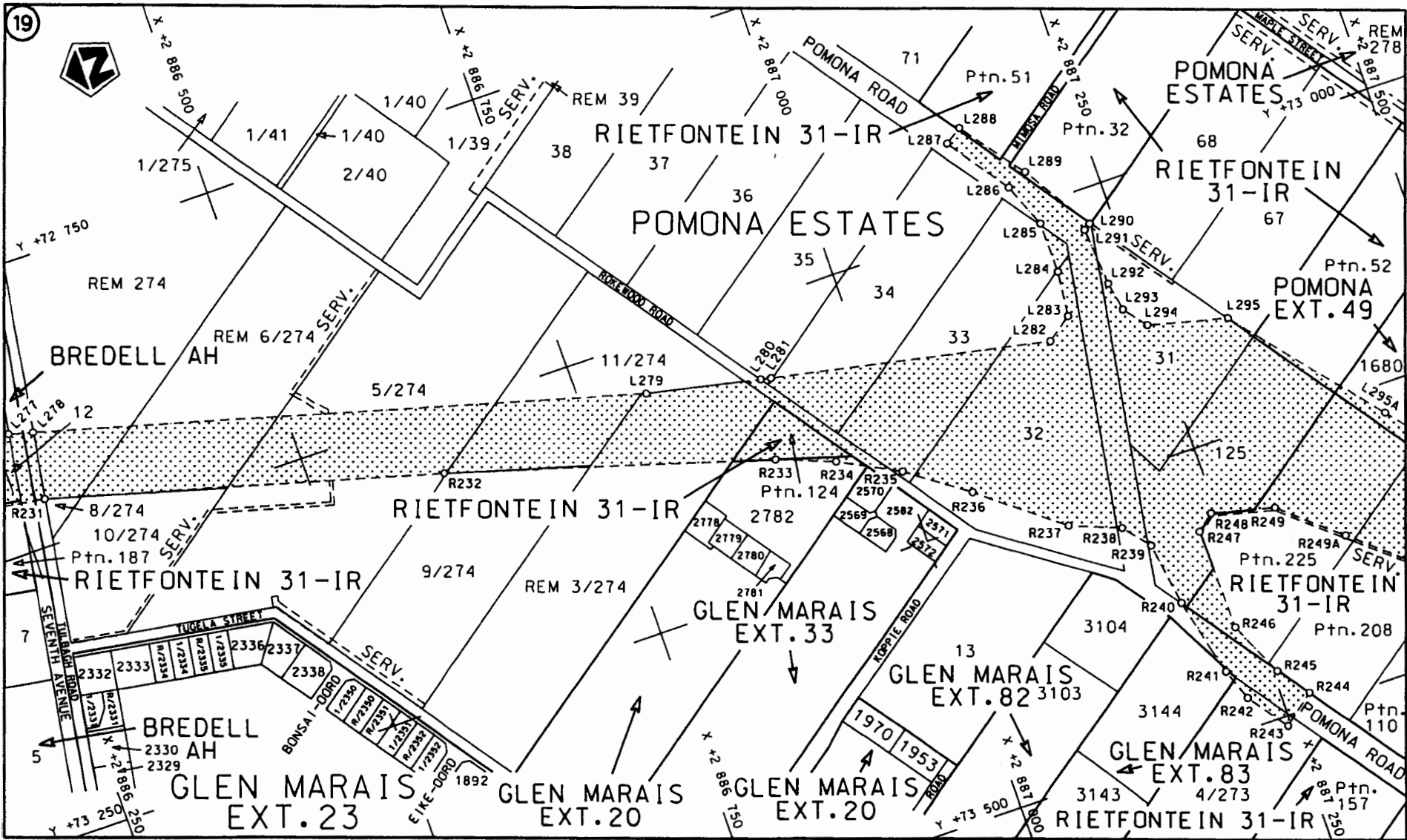
<p>Die Suid Afrikaanse Nasionale Padagentskap Beperk The South African National Roads Agency Limited</p>	<p>Die figuur getoon The figure shown</p>		<p>steldie padreserwe voor van 'n gedeelte represents the road reserve of a portion van Nasionale Roete R21 of National Route R21</p> <p>Seksie Section 2</p>	<p>Vel 9 van 26 Sheet 9 of 26</p>
				<p>Plan P653/08</p>

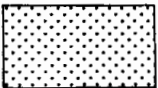


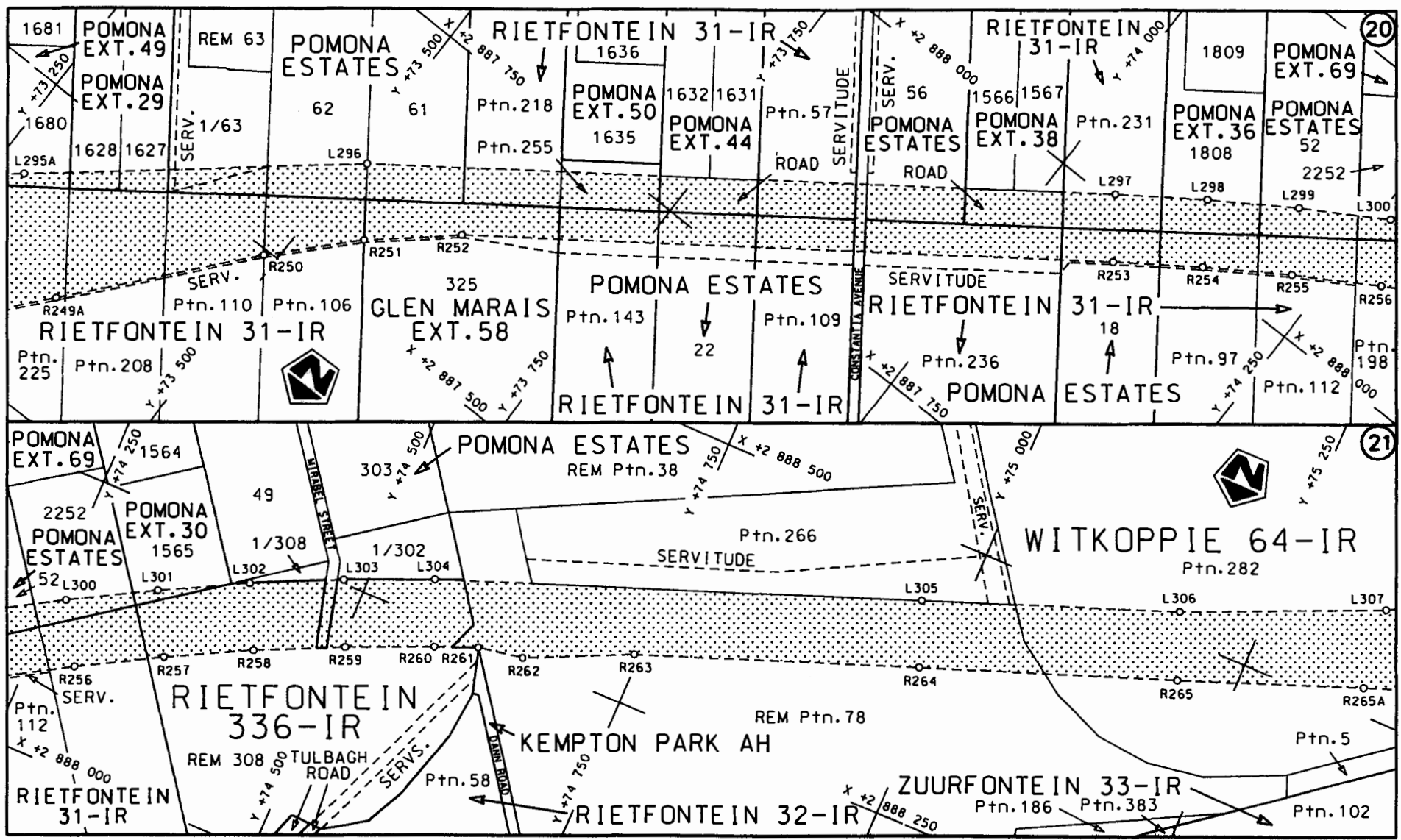
Die Suid Afrikaanse Nasionale Padagentskap Beperk The South African National Roads Agency Limited	Die figuur getoon The figure shown	 steldie podreserve voor van 'n gedeelte represents the road reserve of a portion van Nasionale Roete R21 of National Route R21	Vel Sheet 10 van 26 of of Plan P653/08
REMAINDER REM Ptn. 29 REM Ptn. 86 REM Ptn. 32			2

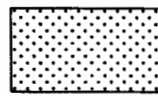


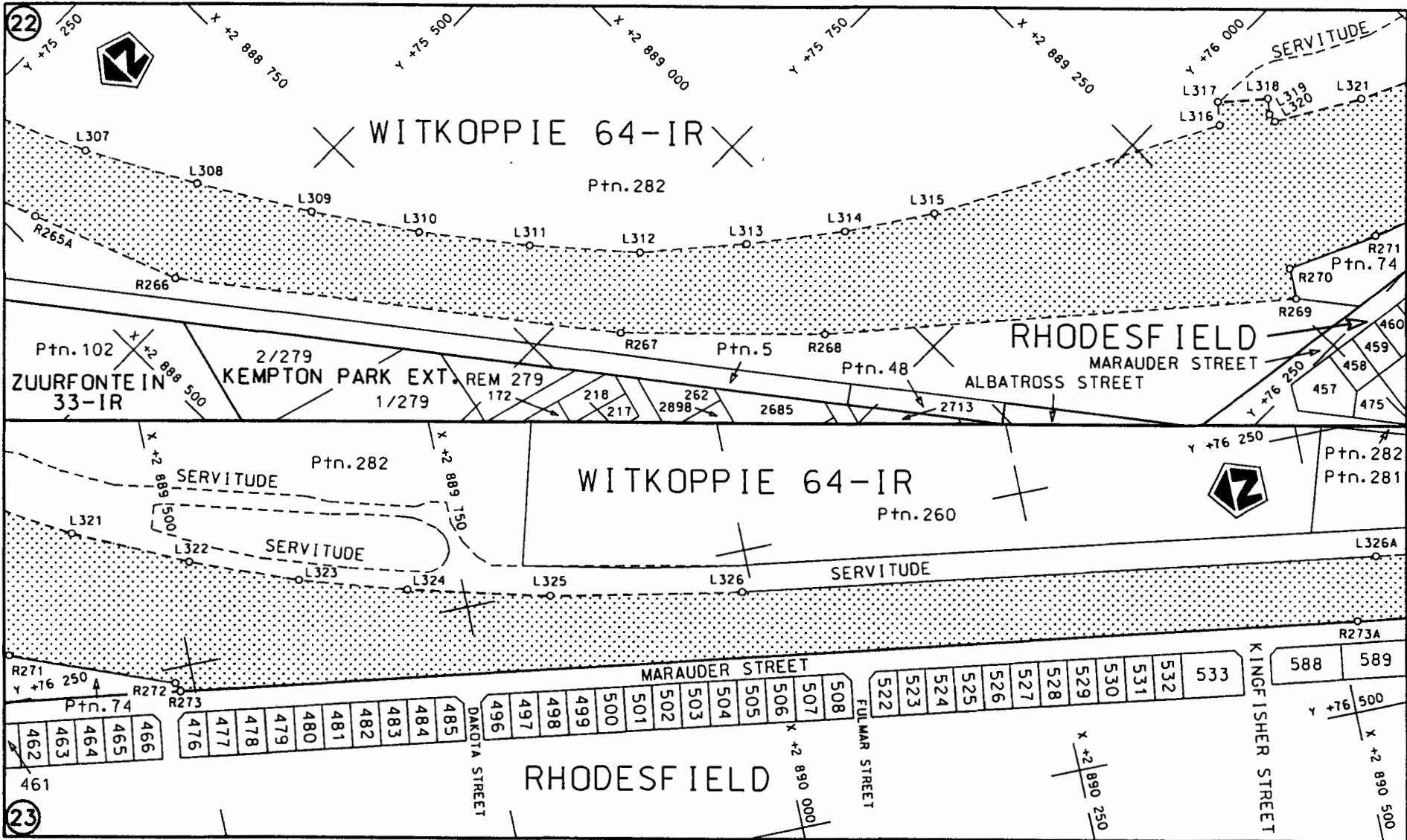
<p>Die Suid Afrikaanse Nasionale Padagentskap Beperk The South African National Roads Agency Limited</p>	<p>Die figuur getoon The figure shown</p> 	<p>stel die padreserwe voor van 'n gedeelte represents the road reserve of a portion van Nasionale Raete of National Route</p> <p>R21 Seksie Section</p> <p>2</p>	<p>Vel Sheet 11 van 26 of of</p> <p>Plan P653/08</p>
--	--	---	--




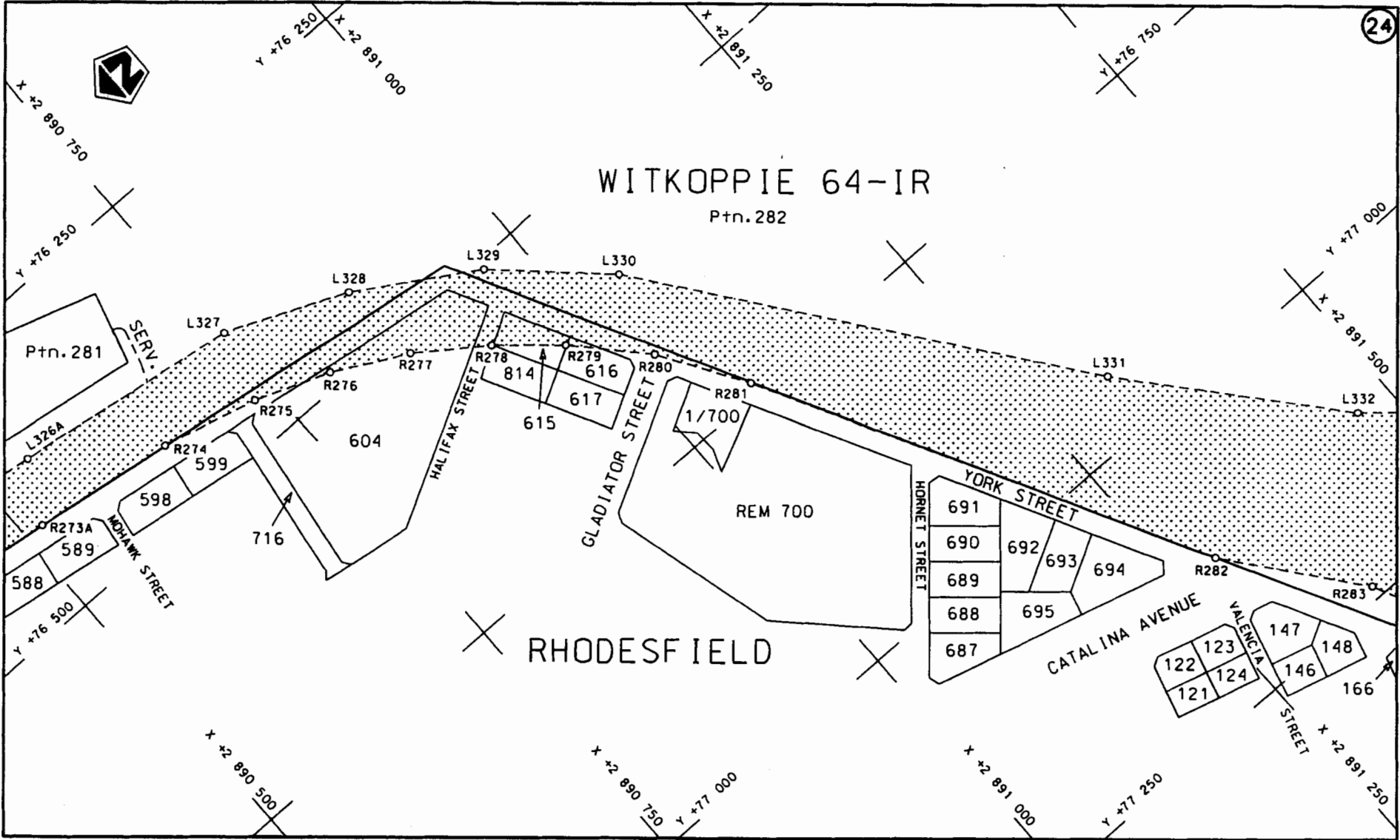
Die Suid Afrikaanse Nasionale Padagentskap Beperk The South African National Roads Agency Limited	Die figuur getoon The figure shown		steldie padreserwe vaar van 'n gedeelte represents the road reserve of a portion van Nasionale Roete of National Route R21 Seksie Section 2	Vel Sheet 12 van 26 of 26 Plan P653/08
--	---------------------------------------	--	--	--

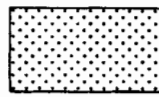


<p>Die Suid Afrikaanse Nasionale Padagentskap Beperk The South African National Roads Agency Limited</p>	<p>Die figuur getoon The figure shown</p> <div style="text-align: center;">  </div>	<p>steldie padreserwe voor van 'n gedeelte represents the road reserve of a portion van Nasionale Roete R21 Seksie of National Route R21 Section</p> <p style="text-align: right;">2</p>	<p>Vel Sheet 13 van 26 of of</p> <p>Plan P653/08</p>
--	---	--	--

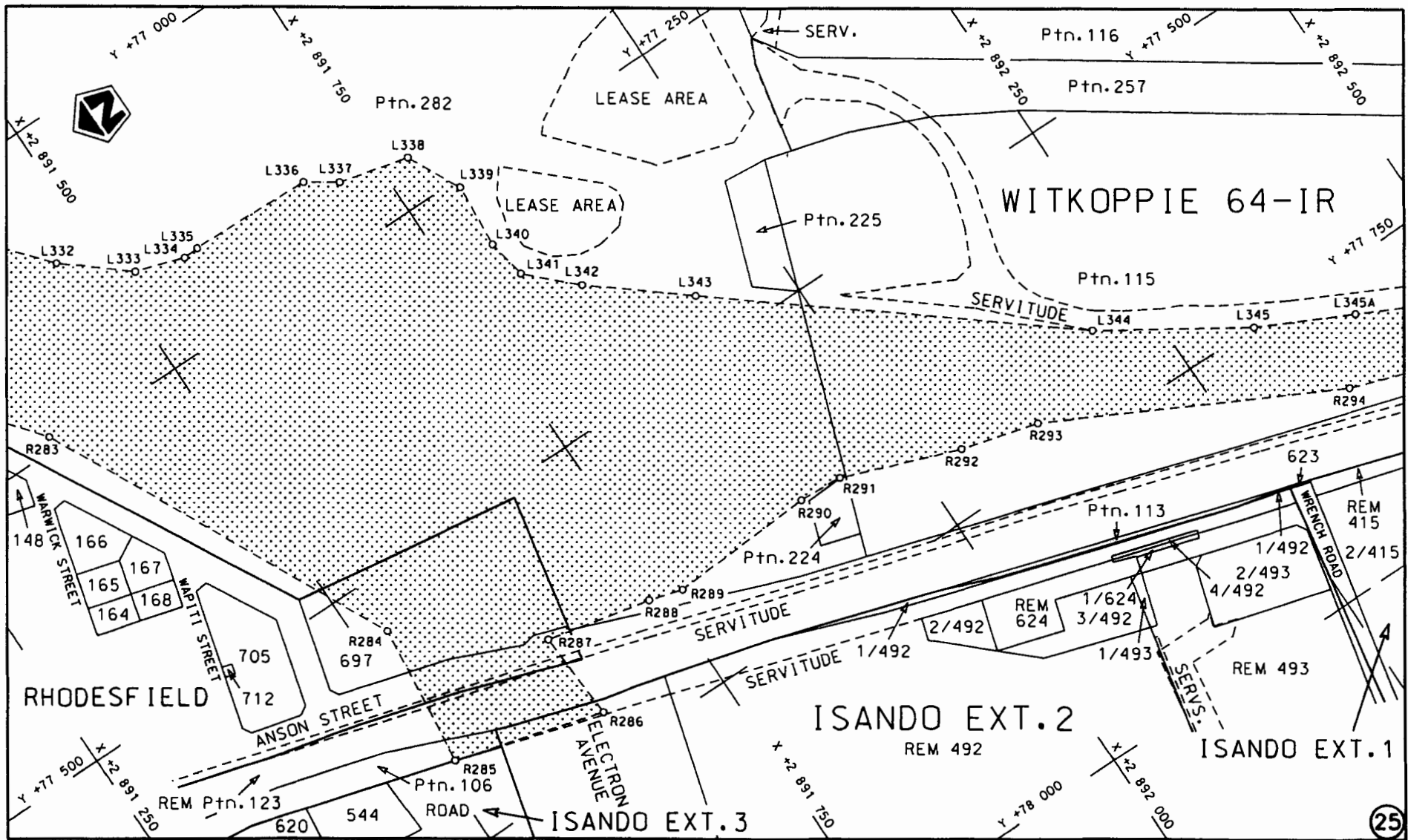


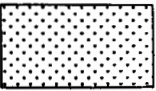
Die Suid Afrikaanse Nasionale Padagentskap Beperk The South African National Roads Agency Limited	Die figuur getoon The figure shown	 steldie padreserve voor van 'n gedeelte represents the road reserve of a portion von Nasionale Roete of National Route	Vel Sheet 14 van of 26
R21      Seksie      2 of National Route      Section			Plan P653/08



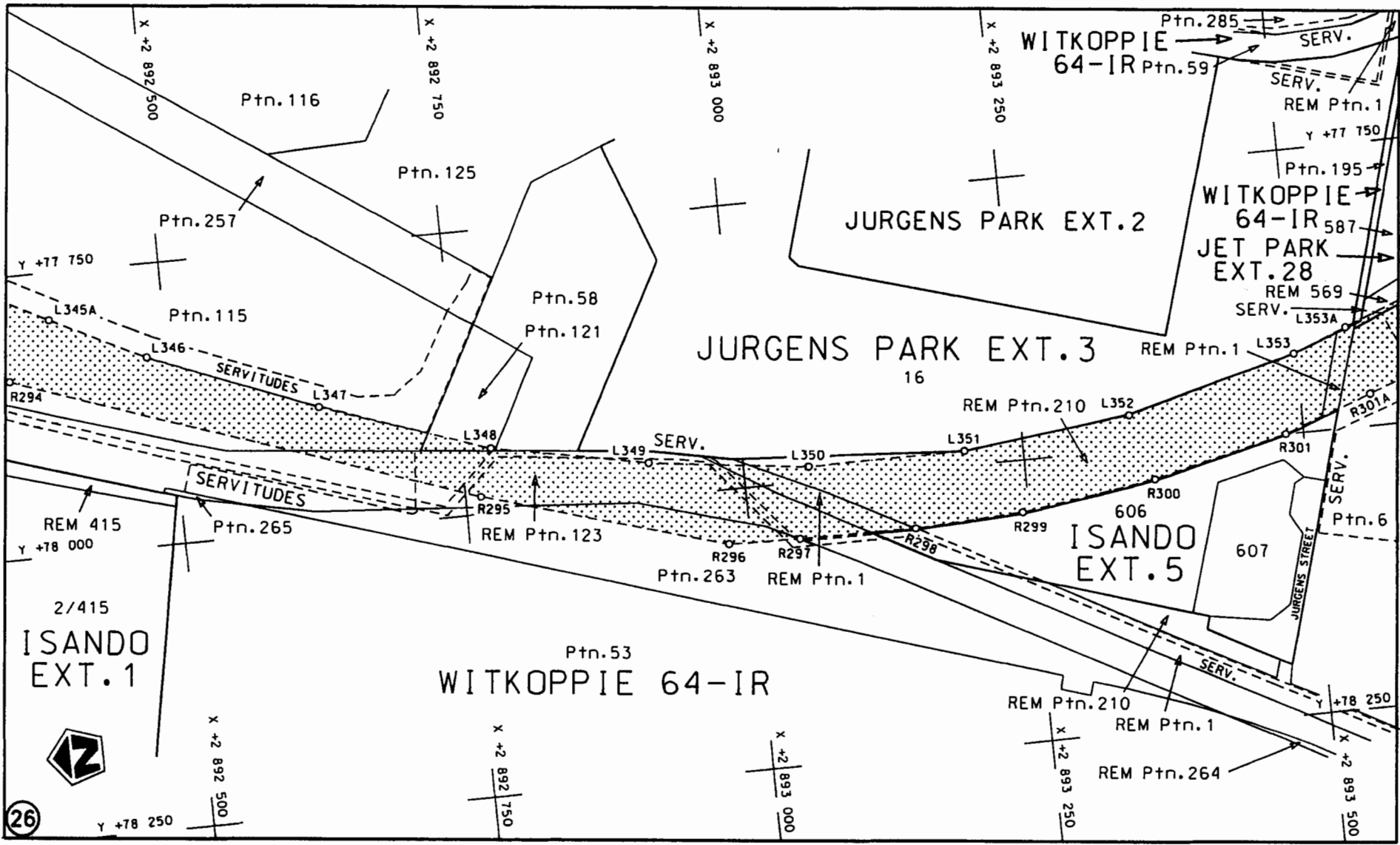
<p>Die Suid Afrikaanse Nasionale Padogenskop Beperk The South African National Roads Agency Limited</p>	<p>Die figuur getoon The figure shown</p>		<p>Vel Sheet 15 van 26</p>
<p>st die padreserwe voor van 'n gedeelte represents the road reserve of a portion von Nasionale Roete of National Route R21 Seksie Section 2</p>			<p>Plan P653/08</p>




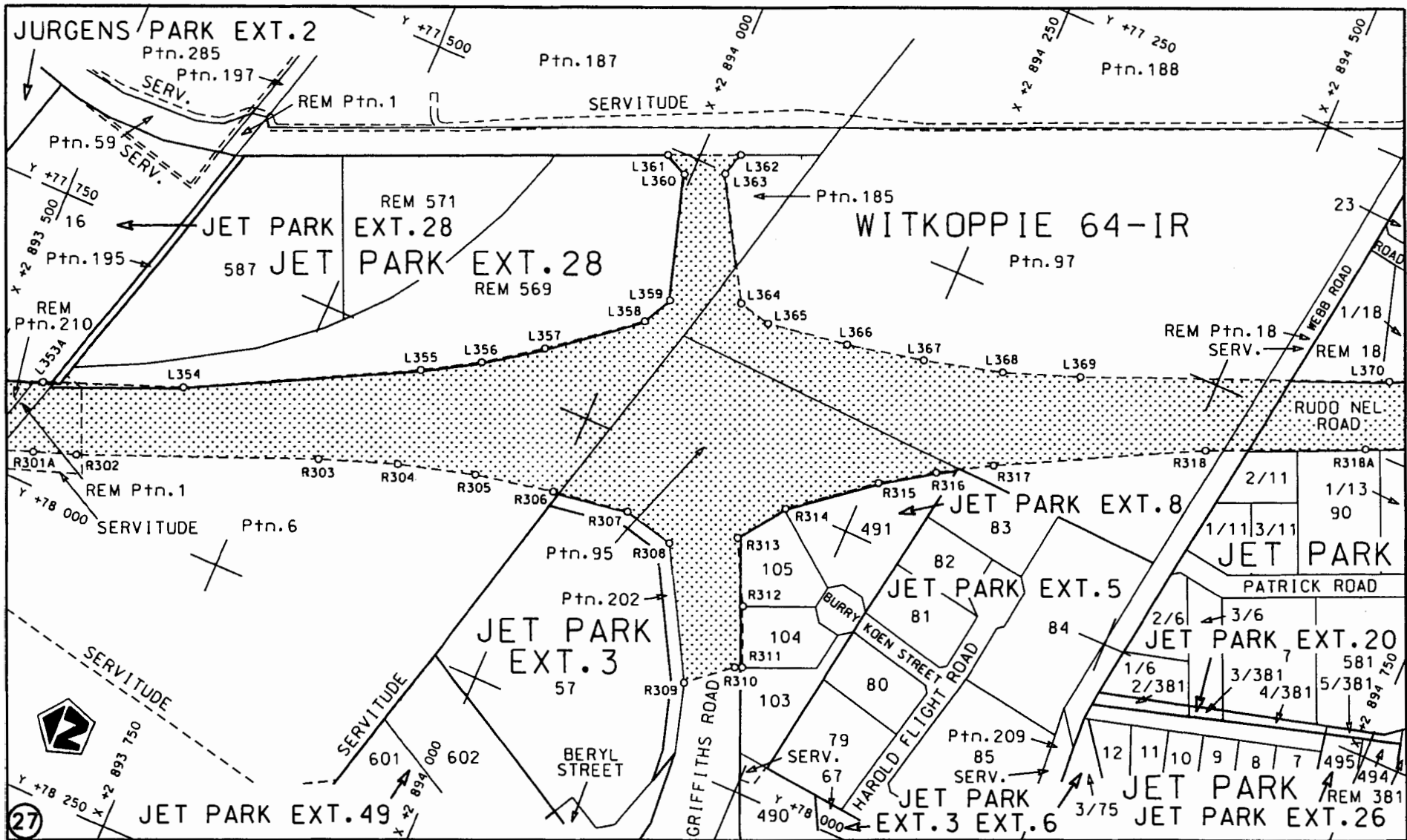



Die Suid Afrikaanse Nasionale Padagentskap Beperk The South African National Roads Agency Limited	Die figuur getoon The figure shown		steldie padreserwe voor van 'n gedeelte represents the road reserve of a portion van Nasionale Roete R21 Seksie Section of National Route R21 Section 2	Vel Sheet 16 van of 26
				Plan P653/08

(25)



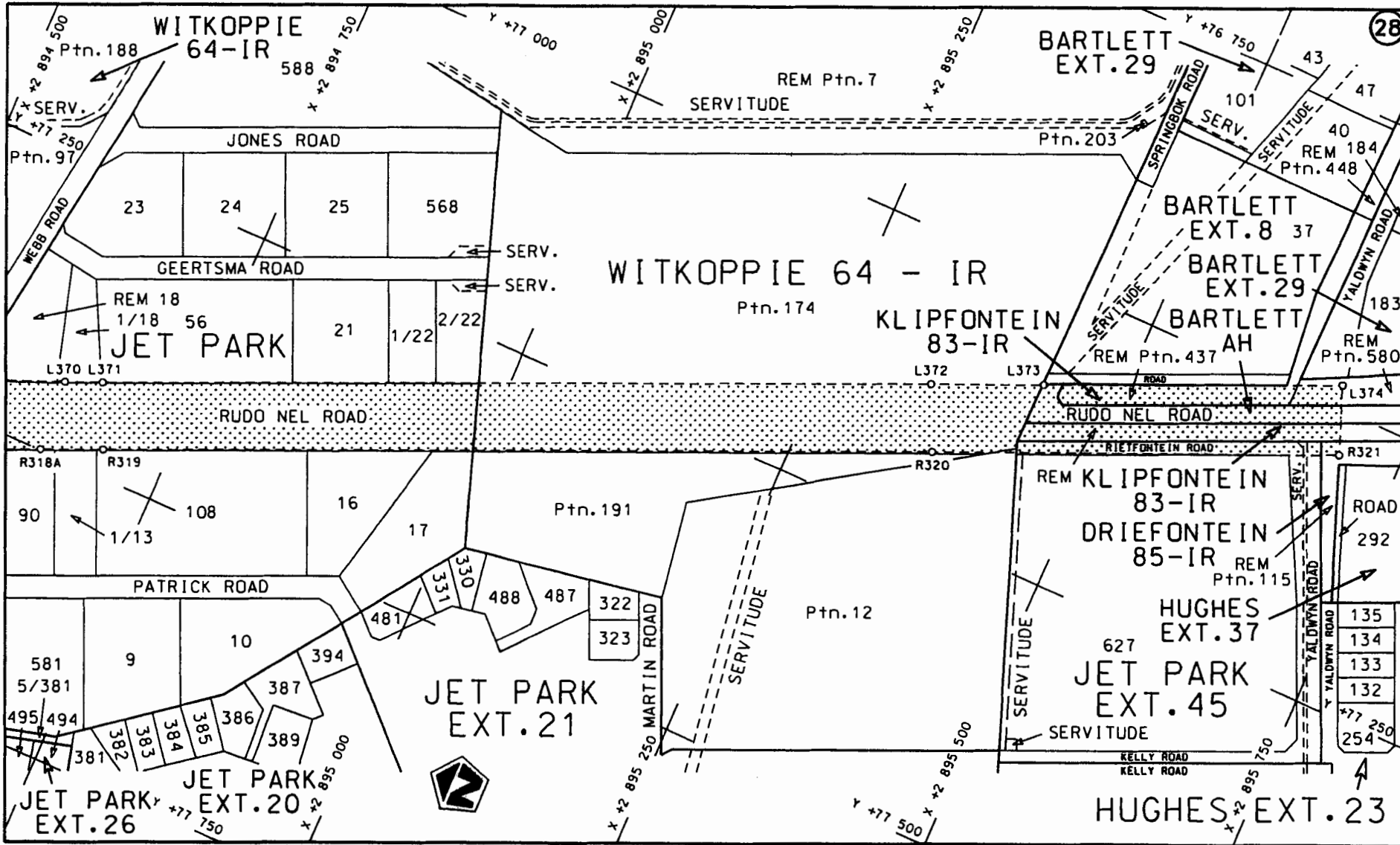
<p>Die Suid Afrikaanse Nasionale Padagentskap Beperk The South African National Roads Agency Limited</p>	<p>Die figuur getoon The figure shown</p> 	<p>steldie padreserwe voor van 'n gedeelte represents the road reserve of a portion van Nasionale Roete R21 Sektie Section 2 of National Route</p>	<p>Vel Sheet 17 van of 26 Plan P653/08</p>
--	--	--	--

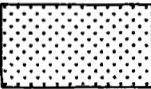


Die Suid Afrikaanse Nasionale Padogenskap Beperk The South African National Roads Agency Limited	Die figuur getoon The figure shown	 steldie padreserwe voor van 'n gedeelte represents the road reserve of a portion van Nasionale Roete R21 of National Route R21 Seksie Section 2	Vel Sheet 18 van of 26 Plan P653/08
---	---------------------------------------	--	--

STAATSKOERANT, 11 APRIL 2008

No. 30961 21



<p>Die Suid Afrikaanse Nasionale Padagentskap Beperk</p>	<p>Die figuur getoon</p>		<p>Vel Sheet 19 van 26 of 26</p>
<p>The South African National Roads Agency Limited</p>	<p>The figure shown</p>	<p>steldie padreserwe voor van 'n gedeelte represents the road reserve of a portion van Nasionale Roete of National Route R21 Seksie Section 2</p>	<p>Plan P653/08</p>

PADRESERWE KOÖRDINATE				/	ROAD RESERVE CO-ORDINATES			
LINKERKANT/LEFT HAND SIDE					REGTERKANT/RIGHT HAND SIDE			
	Y	X	WG	29°	Y	X		
L1	76 487.382	2 856 823.511			R1	76 549.647	2 856 850.138	
L2	76 364.106	2 857 001.996			R2	76 535.783	2 856 867.503	
L3	76 319.423	2 857 082.053			R3	76 516.246	2 856 892.944	
L4	76 233.473	2 857 262.514			R4	76 421.818	2 857 042.673	
L5	76 046.035	2 857 600.600			R5	76 338.140	2 857 196.909	
L6	75 945.128	2 857 759.523			R6	76 146.057	2 857 610.427	
L7	75 631.662	2 858 415.634			R7	76 057.137	2 857 822.614	
L8	75 588.805	2 858 551.908			R8	75 743.422	2 858 470.023	
L9	75 579.275	2 858 572.839			R9	75 719.847	2 858 505.336	
L10	75 539.343	2 858 660.565			R10	75 586.580	2 858 731.765	
L11	75 494.009	2 858 750.832			R11	75 535.408	2 858 822.052	
L12	75 451.315	2 858 842.377			R12	75 518.602	2 858 851.985	
L13	75 411.254	2 858 935.104			R13	75 508.771	2 858 876.063	
L14	75 374.326	2 859 029.116			R14	75 497.954	2 858 902.559	
L15	75 346.353	2 859 104.918			R15	75 489.982	2 858 922.085	
L16	75 318.467	2 859 187.280			R16	75 456.082	2 859 006.536	
L17	75 289.969	2 859 274.666			R17	75 424.383	2 859 091.787	
L18	75 259.398	2 859 361.533			R18	75 394.941	2 859 177.832	
L19	75 229.255	2 859 462.726			R19	75 367.753	2 859 264.638	
L20	75 208.894	2 859 538.285			R20	75 330.355	2 859 399.663	
L21	75 168.754	2 859 717.170			R21	75 290.519	2 859 558.431	
L22	75 133.276	2 859 897.061			R22	75 247.605	2 859 735.854	
L23	75 093.471	2 860 075.885			R23	75 206.336	2 859 913.672	
L24	75 055.341	2 860 255.105			R24	75 166.713	2 860 091.856	
L25	75 018.828	2 860 434.661			R25	75 128.706	2 860 270.376	
L26	74 983.968	2 860 614.528			R26	75 092.345	2 860 449.261	
L27	74 950.778	2 860 794.723			R27	75 057.607	2 860 628.456	
L28	74 919.232	2 860 975.193			R28	75 024.537	2 860 807.982	
L29	74 889.332	2 861 155.968			R29	74 993.083	2 860 987.781	
L30	74 884.064	2 861 189.672			R30	74 979.621	2 861 069.194	
L31	74 871.203	2 861 248.397			R31	74 957.482	2 861 233.288	
L32	74 845.719	2 861 427.259			R32	74 941.066	2 861 339.445	
L33	74 823.534	2 861 547.502			R33	74 924.884	2 861 448.013	
L34	74 796.229	2 861 697.950			R34	74 911.072	2 861 559.782	
L35	74 778.309	2 861 757.172			R35	74 897.757	2 861 711.387	
L36	74 748.777	2 861 815.145			R36	74 904.678	2 861 773.597	
L37	74 729.241	2 861 843.553			R37	74 927.968	2 861 868.356	
L38	74 659.659	2 861 927.740			R38	74 984.330	2 862 012.705	
L39	74 640.275	2 861 956.361			R39	75 119.841	2 861 975.607	
L40	74 616.167	2 862 015.492			R40	75 128.315	2 862 005.934	
L41	74 613.734	2 862 140.398			R41	75 064.949	2 862 043.359	
L42	74 475.633	2 862 206.969			R42	75 006.440	2 862 070.787	
L43	74 482.745	2 862 247.684			R43	74 997.171	2 862 083.895	
L44	74 540.457	2 862 218.250			R44	74 989.912	2 862 149.802	
L45	74 569.914	2 862 207.068			R45	74 984.793	2 862 179.611	
L46	74 614.224	2 862 197.611			R46	74 951.117	2 862 297.508	
L47	74 640.625	2 862 231.768			R47	74 876.202	2 862 381.207	
L48	74 661.500	2 862 298.432			R48	74 856.269	2 862 409.737	
L49	74 688.447	2 862 362.713			R49	74 826.523	2 862 467.892	
L50	74 706.188	2 862 425.896			R50	74 815.216	2 862 497.367	
L51	74 711.951	2 862 518.493			R51	74 772.158	2 862 768.332	

Ve1	20	Van	26	P653/08
Sheet		of		

PADRESERWE KOÖRDINATE				/	ROAD RESERVE CO-ORDINATES			
LINKERKANT/LEFT HAND SIDE					REGTERKANT/RIGHT HAND SIDE			
	Y	X	WG	29°	Y	X		
L52	74 694.983	2 862	762.268	R52	74 765.459	2 862	981.323	
L53	74 659.939	2 862	974.194	R53	74 733.862	2 863	405.949	
L54	74 644.463	2 863	188.009	R54	74 743.009	2 863	467.245	
L55	74 644.923	2 863	279.813	R55	74 725.736	2 863	740.473	
L56	74 647.427	2 863	402.005	R56	74 719.706	2 863	892.449	
L57	74 654.097	2 863	463.408	R57	74 715.139	2 864	044.486	
L58	74 638.159	2 863	554.484	R58	74 714.022	2 864	328.747	
L59	74 638.593	2 863	737.916	R59	74 713.116	2 864	597.127	
L60	74 633.534	2 863	791.013	R60	74 801.086	2 864	652.630	
L61	74 573.877	2 863	578.871	R61	74 851.714	2 864	688.960	
L62	74 543.579	2 863	587.376	R62	74 884.909	2 864	713.983	
L63	74 558.760	2 863	646.263	R63	74 941.059	2 864	810.584	
L64	74 566.474	2 863	689.911	R64	74 891.316	2 864	768.796	
L65	74 570.926	2 863	748.891	R65	74 829.770	2 864	721.971	
L66	74 568.703	2 863	807.993	R66	74 712.967	2 864	665.708	
L67	74 559.805	2 863	866.455	R67	74 710.960	2 864	805.919	
L68	74 547.249	2 863	914.462	R68	74 710.967	2 865	013.186	
L69	74 527.164	2 863	971.064	R69	74 723.126	2 865	211.311	
L70	74 506.501	2 864	029.344	R70	74 715.202	2 865	317.384	
L71	74 495.620	2 864	069.366	R71	74 710.905	2 865	467.347	
L72	74 484.924	2 864	131.180	R72	74 710.905	2 865	563.970	
L73	74 481.299	2 864	193.787	R73	74 709.474	2 865	747.707	
L74	74 484.775	2 864	256.394	R74	74 704.415	2 865	874.719	
L75	74 484.746	2 864	272.518	R75	74 707.280	2 865	967.562	
L76	74 487.582	2 864	289.616	R76	74 703.715	2 866	060.222	
L77	74 481.936	2 864	293.120	R77	74 680.581	2 866	244.050	
L78	74 476.873	2 864	304.413	R78	74 640.713	2 866	436.778	
L79	74 475.705	2 864	316.680	R79	74 625.839	2 866	471.495	
L80	74 483.299	2 864	337.124	R80	74 615.324	2 866	514.076	
L81	74 520.195	2 864	411.891	R81	74 594.018	2 866	603.902	
L82	74 583.475	2 864	533.680	R82	74 570.640	2 866	693.210	
L83	74 597.543	2 864	560.598	R83	74 545.193	2 866	781.937	
L84	74 605.526	2 864	576.370	R84	74 517.611	2 866	870.053	
L85	74 611.561	2 864	589.999	R85	74 487.956	2 866	957.467	
L86	74 615.650	2 864	599.150	R86	74 456.260	2 867	044.181	
L87	74 617.500	2 864	605.673	R87	74 419.246	2 867	138.008	
L88	74 620.226	2 864	613.948	R88	74 347.042	2 867	306.989	
L89	74 621.978	2 864	622.515	R89	74 323.086	2 867	361.883	
L90	74 624.704	2 864	635.171	R90	74 210.225	2 867	634.832	
L91	74 626.456	2 864	653.084	R91	74 179.442	2 867	719.994	
L92	74 628.014	2 864	665.204	R92	74 150.701	2 867	805.856	
L93	74 627.527	2 864	676.643	R93	74 123.998	2 867	892.442	
L94	74 626.846	2 864	701.566	R94	74 109.215	2 867	944.623	
L95	74 626.164	2 864	720.647	R95	74 099.309	2 867	979.553	
L96	74 625.288	2 864	739.534	R96	74 076.694	2 868	067.243	
L97	74 624.023	2 864	757.641	R97	74 056.056	2 868	155.483	
L98	74 623.925	2 864	775.067	R98	74 037.585	2 868	244.118	
L99	74 624.364	2 864	794.186	R99	74 021.283	2 868	333.147	
L100	74 630.827	2 864	805.921	R100	74 007.019	2 868	422.575	
L101	74 636.046	2 865	013.188	R101	73 996.925	2 868	512.614	
L102	74 635.984	2 865	563.971	R102	73 994.858	2 868	512.307	

Vel	21	Van	26	P653/08
Sheet		of		

PADRESERWE KOÖRDINATE				/	ROAD RESERVE CO-ORDINATES			
LINKERKANT/LEFT HAND SIDE					REGTERKANT/RIGHT HAND SIDE			
	Y	X	WG	29°	Y	X		
L103	74 634.552	2 865 745.939		R103	73 986.934	2 868 602.527		
L104	74 630.480	2 865 833.690		R104	73 979.039	2 868 692.686		
L105	74 626.820	2 865 916.260		R105	73 973.249	2 868 782.997		
L106	74 611.710	2 866 085.160		R106	73 969.592	2 868 873.430		
L107	74 610.030	2 866 098.060		R107	73 968.068	2 868 963.924		
L108	74 604.806	2 866 140.996		R108	73 968.648	2 869 054.419		
L109	74 592.309	2 866 230.700		R109	73 971.391	2 869 144.883		
L110	74 577.710	2 866 320.069		R110	73 976.268	2 869 235.254		
L111	74 561.007	2 866 409.072		R111	73 983.209	2 869 325.538		
L112	74 557.989	2 866 423.245		R112	73 992.393	2 869 415.542		
L113	74 548.662	2 866 467.289		R113	74 003.640	2 869 505.335		
L114	74 542.201	2 866 497.648		R114	74 012.296	2 869 565.044		
L115	74 521.322	2 866 585.767		R115	74 025.585	2 869 582.813		
L116	74 498.371	2 866 673.367		R116	74 271.609	2 869 618.391		
L117	74 473.414	2 866 760.390		R117	74 267.206	2 869 656.991		
L118	74 446.381	2 866 846.829		R118	74 034.547	2 869 630.453		
L119	74 417.274	2 866 932.567		R119	74 024.946	2 869 654.715		
L120	74 386.187	2 867 017.635		R120	74 037.351	2 869 721.252		
L121	74 349.873	2 867 109.632		R121	74 075.086	2 869 899.283		
L122	74 314.122	2 867 193.331		R122	74 204.565	2 870 487.419		
L123	74 278.370	2 867 276.998		R123	74 364.861	2 871 215.363		
L124	74 254.414	2 867 331.893		R124	74 403.753	2 871 394.340		
L125	74 182.211	2 867 500.569		R125	74 425.760	2 871 500.500		
L126	74 140.059	2 867 608.560		R126	74 443.591	2 871 590.476		
L127	74 108.667	2 867 695.367		R127	74 460.721	2 871 680.605		
L128	74 079.376	2 867 782.959		R128	74 477.120	2 871 770.855		
L129	74 052.127	2 867 871.167		R129	74 492.847	2 871 861.227		
L130	74 026.981	2 867 959.985		R130	74 507.843	2 871 951.721		
L131	74 003.909	2 868 049.382		R131	74 522.400	2 872 042.340		
L132	73 982.939	2 868 139.297		R132	74 535.691	2 872 133.077		
L133	73 964.103	2 868 229.670		R133	74 548.766	2 872 225.492		
L134	73 947.431	2 868 320.468		R134	74 572.755	2 872 407.089		
L135	73 932.862	2 868 411.633		R135	74 701.829	2 873 402.992		
L136	73 920.457	2 868 503.133		R136	74 716.002	2 873 514.914		
L137	73 918.324	2 868 502.859		R137	74 747.732	2 873 725.830		
L138	73 908.083	2 868 594.664		R138	74 760.534	2 873 817.879		
L139	73 902.352	2 868 659.982		R139	74 775.774	2 873 895.602		
L140	73 900.005	2 868 686.682		R140	74 799.852	2 873 970.277		
L141	73 894.093	2 868 778.853		R141	74 832.770	2 874 040.074		
L142	73 890.375	2 868 871.144		R142	74 964.136	2 874 258.306		
L143	73 888.820	2 868 963.528		R143	74 977.547	2 874 303.720		
L144	73 889.431	2 869 055.882		R144	75 098.507	2 874 294.440		
L145	73 892.235	2 869 148.205		R145	75 096.300	2 874 345.427		
L146	73 897.203	2 869 240.467		R146	74 978.766	2 874 341.484		
L147	73 904.367	2 869 332.545		R147	74 966.270	2 874 389.368		
L148	73 913.663	2 869 424.442		R148	74 895.253	2 874 523.478		
L149	73 925.124	2 869 516.125		R149	74 882.452	2 874 561.273		
L150	73 929.422	2 869 546.604		R150	74 876.051	2 874 601.505		
L151	73 919.699	2 869 569.799		R151	74 876.356	2 874 640.824		
L152	73 780.559	2 869 552.609		R152	74 890.885	2 874 863.603		
L153	73 731.538	2 869 546.029		R153	74 917.526	2 875 068.852		
					Vel 22 Van 26		P653/08	
					Sheet of			

PADRESERWE KOÖRDINATE				/	ROAD RESERVE CO-ORDINATES			
LINKERKANT/LEFT HAND SIDE					REGTERKANT/RIGHT HAND SIDE			
	Y	X	WG	29°	Y	X		
L154	73 723.532	2 869 583.454		R154	74 988.973	2 875 619.494		
L155	73 775.500	2 869 590.038		R155	75 067.400	2 876 224.025		
L156	73 914.243	2 869 610.276		R156	75 141.774	2 876 798.436		
L157	73 945.912	2 869 637.494		R157	75 148.358	2 876 870.551		
L158	73 951.154	2 869 667.821		R158	75 149.424	2 876 942.940		
L159	73 963.804	2 869 735.639		R159	75 145.005	2 877 015.208		
L160	74 001.904	2 869 915.408		R160	75 135.099	2 877 086.926		
L161	74 131.384	2 870 503.543		R161	75 119.768	2 877 157.700		
L162	74 289.850	2 871 223.228		R162	75 099.102	2 877 227.103		
L163	74 291.679	2 871 231.458		R163	75 073.195	2 877 294.737		
L164	74 330.450	2 871 409.854		R164	75 042.227	2 877 360.208		
L165	74 352.304	2 871 515.345		R165	74 747.096	2 877 927.568		
L166	74 367.026	2 871 605.320		R166	74 545.887	2 878 314.219		
L167	74 384.035	2 871 694.839		R167	74 698.328	2 878 419.023		
L168	74 400.263	2 871 784.551		R168	74 751.872	2 878 438.900		
L169	74 415.167	2 871 874.992		R169	74 745.971	2 878 451.655		
L170	74 430.851	2 871 964.187		R170	74 726.696	2 878 445.049		
L171	74 448.030	2 872 053.709		R171	74 515.560	2 878 372.688		
L172	74 461.533	2 872 143.868		R172	74 465.768	2 878 468.363		
L173	74 474.519	2 872 235.703		R173	74 184.409	2 879 009.126		
L174	74 498.446	2 872 416.721		R174	74 160.574	2 879 057.618		
L175	74 627.370	2 873 412.604		R175	74 138.995	2 879 107.148		
L176	74 641.574	2 873 524.555		R176	74 119.701	2 879 157.591		
L177	74 669.719	2 873 741.380		R177	74 102.724	2 879 208.887		
L178	74 690.020	2 874 083.057		R178	73 937.310	2 879 749.791		
L179	74 689.107	2 874 129.386		R179	73 877.815	2 879 964.671		
L180	74 681.487	2 874 175.106		R180	73 803.871	2 880 133.570		
L181	74 649.237	2 874 309.930		R181	73 789.011	2 880 177.846		
L182	74 564.232	2 874 322.059		R182	73 780.453	2 880 223.759		
L183	74 555.616	2 874 323.782		R183	73 770.206	2 880 342.594		
L184	74 513.818	2 874 346.474		R184	73 761.873	2 880 384.780		
L185	74 462.970	2 874 390.516		R185	73 746.786	2 880 425.019		
L186	74 411.529	2 874 455.766		R186	73 690.023	2 880 547.045		
L187	74 378.102	2 874 526.006		R187	73 697.376	2 880 566.801		
L188	74 370.409	2 874 598.891		R188	73 784.084	2 880 605.813		
L189	74 380.466	2 874 671.434		R189	73 837.592	2 880 633.119		
L190	74 407.476	2 874 733.983		R190	73 809.897	2 880 687.389		
L191	74 447.438	2 874 789.922		R191	73 761.385	2 880 664.488		
L192	74 496.648	2 874 830.212		R192	73 496.127	2 880 554.899		
L193	74 539.389	2 874 860.857		R193	73 322.910	2 880 802.451		
L194	74 631.778	2 874 932.245		R194	73 286.053	2 880 849.891		
L195	74 690.089	2 874 982.802		R195	73 239.930	2 880 915.668		
L196	74 758.676	2 875 061.320		R196	73 030.230	2 881 215.344		
L197	74 811.823	2 875 147.912		R197	72 677.801	2 881 719.131		
L198	74 828.896	2 875 186.323		R198	72 328.295	2 882 218.571		
L199	74 862.458	2 875 284.224		R199	72 118.567	2 882 518.279		
L200	74 881.960	2 875 378.065		R200	72 078.701	2 882 580.701		
L201	74 914.664	2 875 629.126		R201	72 044.259	2 882 646.293		
L202	74 993.091	2 876 233.656		R202	72 015.487	2 882 714.537		
L203	75 067.585	2 876 807.951		R203	71 992.567	2 882 785.006		
L204	75 073.652	2 876 874.397		R204	71 975.682	2 882 857.121		

Vel	23	Van	26	P653/08
Sheet		of		



PADRESERWE KOÖRDINATE				/	ROAD RESERVE CO-ORDINATES			
LINKERKANT/LEFT HAND SIDE					REGTERKANT/RIGHT HAND SIDE			
	Y	X	WG	29°	Y	X		
L205	75 074.658	2 876	941.086	R205	71 967.910	2 882	930.733	
L206	75 070.573	2 877	007.684	R206	71 963.415	2 883	004.394	
L207	75 061.429	2 877	073.763	R207	71 965.117	2 883	078.206	
L208	75 047.318	2 877	138.959	R208	71 973.045	2 883	151.593	
L209	75 028.269	2 877	202.906	R209	71 987.139	2 883	224.067	
L210	75 004.310	2 877	265.324	R210	72 024.703	2 883	341.713	
L211	74 975.781	2 877	325.644	R211	72 111.260	2 883	537.179	
L212	74 680.651	2 877	893.004	R212	72 214.587	2 883	731.638	
L213	74 479.630	2 878	279.440	R213	72 334.129	2 883	840.998	
L214	74 260.200	2 878	094.310	R214	72 365.156	2 883	781.929	
L215	74 243.520	2 878	113.390	R215	72 418.130	2 883	809.756	
L216	74 457.665	2 878	305.118	R216	72 389.529	2 883	864.208	
L217	74 064.808	2 879	076.820	R217	72 407.524	2 883	908.114	
L218	73 817.678	2 879	884.844	R218	72 422.764	2 883	945.299	
L219	73 795.001	2 879	949.766	R219	72 432.079	2 884	171.619	
L220	73 767.299	2 880	012.712	R220	72 437.907	2 884	241.010	
L221	73 734.747	2 880	073.304	R221	72 450.978	2 884	311.161	
L222	73 697.562	2 880	131.155	R222	72 486.161	2 884	406.548	
L223	73 637.616	2 880	211.585	R223	72 533.852	2 884	543.846	
L224	73 465.481	2 880	457.562	R224	72 593.949	2 884	676.950	
L225	73 121.697	2 880	345.177	R225	72 644.603	2 884	795.578	
L226	73 101.043	2 880	405.579	R226	72 665.406	2 884	851.935	
L227	73 144.477	2 880	422.174	R227	72 739.521	2 885	025.505	
L228	73 251.889	2 880	458.907	R228	72 776.429	2 885	155.960	
L229	73 261.809	2 880	478.139	R229	72 888.540	2 885	851.668	
L230	73 220.025	2 880	603.044	R230	72 921.517	2 886	028.680	
L231	73 208.780	2 880	661.653	R231	72 959.341	2 886	275.171	
L232	73 192.855	2 880	765.951	R232	73 054.012	2 886	616.542	
L233	73 165.128	2 880	848.300	R233	73 138.232	2 886	897.232	
L234	73 113.890	2 880	945.405	R234	73 157.564	2 886	947.616	
L235	73 069.020	2 881	021.801	R235	73 185.000	2 887	000.000	
L236	73 023.512	2 881	090.285	R236	73 222.434	2 887	052.345	
L237	72 753.293	2 881	480.577	R237	73 278.039	2 887	123.113	
L238	72 616.415	2 881	676.186	R238	73 295.548	2 887	166.730	
L239	<del>72 266.909</del>	<del>2 882</del>	<del>175.626</del>	R239	<del>73 318.427</del>	<del>2 887</del>	<del>185.839</del>	
L240	72 057.211	2 882	475.302	R240	73 375.268	2 887	194.221	
L241	72 013.901	2 882	543.059	R241	73 445.600	2 887	211.172	
L242	71 976.473	2 882	614.229	R242	73 473.919	2 887	221.500	
L243	71 945.201	2 882	688.325	R243	73 508.806	2 887	246.837	
L244	71 920.482	2 882	764.768	R244	73 487.422	2 887	275.071	
L245	71 902.134	2 882	843.039	R245	73 459.801	2 887	254.151	
L246	71 887.467	2 882	922.439	R246	73 410.929	2 887	231.925	
L247	71 882.552	2 883	002.848	R247	73 320.985	2 887	230.096	
L248	71 884.418	2 883	083.507	R248	73 309.067	2 887	245.062	
L249	71 893.102	2 883	163.707	R249	73 322.783	2 887	300.016	
L250	71 908.513	2 883	242.867	R250	73 488.684	2 887	495.238	
L251	71 937.079	2 883	343.418	R251	73 549.857	2 887	560.373	
L252	72 050.151	2 883	646.692	R252	73 616.516	2 887	617.918	
L253	72 095.106	2 883	790.594	R253	74 088.647	2 887	958.282	
L254	72 110.043	2 883	903.813	R254	74 154.453	2 888	004.063	
L255	72 126.199	2 884	083.373	R255	74 221.722	2 888	047.649	

Vel	24	Van	26	P653/08
Sheet		of		

PADRESERWE KOÖRDINATE				ROAD RESERVE CO-ORDINATES			
LINKERKANT/LEFT HAND SIDE				REGTERKANT/RIGHT HAND SIDE			
	Y	X	WG 29°		Y	X	
L256	72 144.792	2 884 119.949		R256	74 290.422	2 888 088.978	
L257	72 165.875	2 884 161.422		R257	74 360.434	2 888 127.992	
L258	72 084.747	2 884 315.932		R258	74 431.726	2 888 164.598	
L259	72 137.721	2 884 343.760		R259	74 504.207	2 888 198.857	
L260	72 214.374	2 884 197.791		R260	74 577.785	2 888 230.677	
L261	72 239.364	2 884 192.360		R261	74 614.763	2 888 245.396	
L262	72 278.293	2 884 221.749		R262	74 655.935	2 888 252.989	
L263	72 342.956	2 884 337.177		R263	74 745.332	2 888 294.867	
L264	72 376.838	2 884 398.826		R264	74 984.000	2 888 384.000	
L265	72 425.816	2 884 497.589		R265	75 200.000	2 888 464.000	
L266	72 520.106	2 884 706.325		R266	75 482.000	2 888 571.000	
L267	72 548.214	2 884 775.836		R267	75 795.000	2 888 813.000	
L268	72 631.883	2 884 974.955		R268	75 924.000	2 888 940.000	
L269	72 696.550	2 885 137.955		R269	76 198.000	2 889 256.000	
L270	72 719.644	2 885 212.521		R270	76 175.000	2 889 271.000	
L271	72 738.634	2 885 297.386		R271	76 209.000	2 889 345.000	
L272	72 765.287	2 885 465.692		R272	76 263.000	2 889 484.000	
L273	72 810.049	2 885 740.437		R273	76 271.000	2 889 487.000	
L274	72 835.883	2 885 900.664		R274	76 440.000	2 890 646.000	
L275	72 853.386	2 886 039.598		R275	76 462.000	2 890 732.000	
L276	72 880.444	2 886 177.048		R276	76 487.000	2 890 798.000	
L277	72 894.358	2 886 263.345		R277	76 521.000	2 890 863.000	
L278	72 900.271	2 886 284.350		R278	76 563.000	2 890 922.000	
L279	73 045.477	2 886 808.260		R279	76 607.000	2 890 973.000	
L280	73 066.470	2 886 908.774		R280	76 665.000	2 891 027.000	
L281	73 068.330	2 886 917.644		R281	76 740.000	2 891 075.000	
L282	73 118.461	2 887 162.136		R282	77 128.000	2 891 286.000	
L283	73 102.637	2 887 184.061		R283	77 239.000	2 891 375.000	
L284	73 062.621	2 887 188.767		R284	77 547.000	2 891 527.000	
L285	73 017.215	2 887 188.182		R285	77 676.000	2 891 513.000	
L286	72 977.866	2 887 172.302		R286	77 713.343	2 891 646.802	
L287	72 923.764	2 887 133.197		R287	77 633.155	2 891 642.290	
L288	72 914.416	2 887 147.629		R288	77 653.071	2 891 735.763	
L289	72 969.744	2 887 190.432		R289	77 661.577	2 891 765.520	
L290	73 031.344	2 887 228.788		R290	77 655.404	2 891 897.598	
L291	73 035.164	2 887 222.961		R291	77 658.000	2 891 937.000	
L292	73 086.922	2 887 226.646		R292	77 696.000	2 892 041.000	
L293	73 112.923	2 887 231.435		R293	77 715.000	2 892 111.000	
L294	73 133.088	2 887 247.530		R294	77 843.000	2 892 358.000	
L295	73 150.594	2 887 316.563		R295	77 985.000	2 892 764.000	
L296	73 510.355	2 887 615.145		R296	78 048.000	2 892 981.000	
L297	74 053.656	2 888 006.806		R297	78 050.000	2 893 044.000	
L298	74 121.108	2 888 053.745		R298	78 051.000	2 893 148.000	
L299	74 190.053	2 888 098.397		R299	78 046.000	2 893 244.000	
L300	74 260.461	2 888 140.733		R300	78 029.000	2 893 365.000	
L301	74 332.241	2 888 180.692		R301	78 000.000	2 893 484.000	
L302	74 405.300	2 888 218.243		R302	77 959.000	2 893 599.000	
L303	74 479.549	2 888 253.354		R303	77 878.000	2 893 796.000	
L304	74 554.955	2 888 285.968		R304	77 854.000	2 893 862.000	
L305	74 963.000	2 888 440.000		R305	77 835.000	2 893 929.000	
L306	75 178.000	2 888 521.000		R306	77 821.000	2 893 999.000	

Vel	25	Van	26	P653/08
Sheet		of		

PADRESERWE KOÖRDINATE				ROAD RESERVE CO-ORDINATES			
LINKERKANT/LEFT HAND SIDE				REGTERKANT/RIGHT HAND SIDE			
	Y	X	WG 29°		Y	X	
L307	75 347.000	2 888 595.000		R307	77 811.000	2 894 066.000	
L308	75 437.000	2 888 644.000		R308	77 821.721	2 894 110.759	
L309	75 525.000	2 888 696.000		R309	77 930.051	2 894 171.112	
L310	75 606.000	2 888 751.000		R310	77 899.490	2 894 206.826	
L311	75 684.000	2 888 812.000		R311	77 896.874	2 894 212.914	
L312	75 757.000	2 888 876.000		R312	77 847.240	2 894 192.342	
L313	75 819.000	2 888 948.000		R313	77 793.369	2 894 163.925	
L314	75 873.000	2 889 017.000		R314	77 753.000	2 894 193.000	
L315	75 918.000	2 889 084.000		R315	77 699.000	2 894 260.000	
L316	76 043.000	2 889 317.000		R316	77 670.000	2 894 303.000	
L317	76 027.000	2 889 331.000		R317	77 644.000	2 894 347.000	
L318	76 056.000	2 889 364.000		R318	77 557.000	2 894 514.000	
L319	76 067.000	2 889 355.000		R319	77 477.000	2 894 695.000	
L320	76 075.000	2 889 354.000		R320	77 181.000	2 895 367.000	
L321	76 115.000	2 889 422.000		R321	77 037.515	2 895 697.869	
L322	76 161.000	2 889 518.000					
L323	76 196.000	2 889 608.000					
L324	76 224.000	2 889 701.000					
L325	76 255.000	2 889 824.000					
L326	76 286.000	2 889 991.000					
L327	76 399.000	2 890 751.000					
L328	76 444.000	2 890 857.000					
L329	76 508.000	2 890 961.000					
L330	76 591.000	2 891 050.000					
L331	76 944.845	2 891 319.144					
L332	77 115.000	2 891 466.000					
L333	77 159.869	2 891 518.614					
L334	77 173.487	2 891 561.747					
L335	77 172.766	2 891 575.929					
L336	77 176.269	2 891 686.765					
L337	77 194.112	2 891 713.420					
L338	77 209.632	2 891 775.746					
L339	77 257.503	2 891 799.937					
L340	77 315.309	2 891 795.518					
L341	77 350.974	2 891 802.486		L358	77 650.000	2 894 013.000	
L342	77 389.468	2 891 842.311		L359	77 624.000	2 894 026.000	
L343	77 452.966	2 891 920.100		L360	77 516.540	2 893 993.829	
L344	77 674.000	2 892 197.000		L361	77 506.786	2 893 974.017	
L345	77 751.000	2 892 317.000		L362	77 481.184	2 894 033.148	
L346	77 833.000	2 892 482.000		L363	77 501.910	2 894 027.052	
L347	77 892.000	2 892 628.000		L364	77 601.000	2 894 085.000	
L348	77 943.000	2 892 777.000		L365	77 608.000	2 894 114.000	
L349	77 970.000	2 892 917.000		L366	77 597.000	2 894 186.000	
L350	77 987.000	2 893 058.000		L367	77 583.000	2 894 254.000	
L351	77 987.000	2 893 198.000		L368	77 565.000	2 894 322.000	
L352	77 970.000	2 893 347.000		L369	77 541.000	2 894 387.000	
L353	77 930.000	2 893 498.000		L370	77 436.000	2 894 640.000	
L354	77 867.000	2 893 661.000		L371	77 423.000	2 894 671.000	
L355	77 769.000	2 893 848.000		L372	77 127.000	2 895 342.000	
L356	77 741.000	2 893 895.000		L373	77 087.000	2 895 434.000	
L357	77 707.000	2 893 942.000		L374	76 980.035	2 895 675.949	

Vel	26	Van	26	P653/08
Sheet		of		