

---

**GOVERNMENT NOTICE**  
**GOEWERMENTSKENNISGEWING**

---

**DEPARTMENT OF TRANSPORT**  
**DEPARTEMENT VAN VERVOER**

No. 143

8 February 2008

**THE SOUTH AFRICAN NATIONAL ROADS**  
**AGENCY LIMITED**

Registration No: 98/09584/06

---

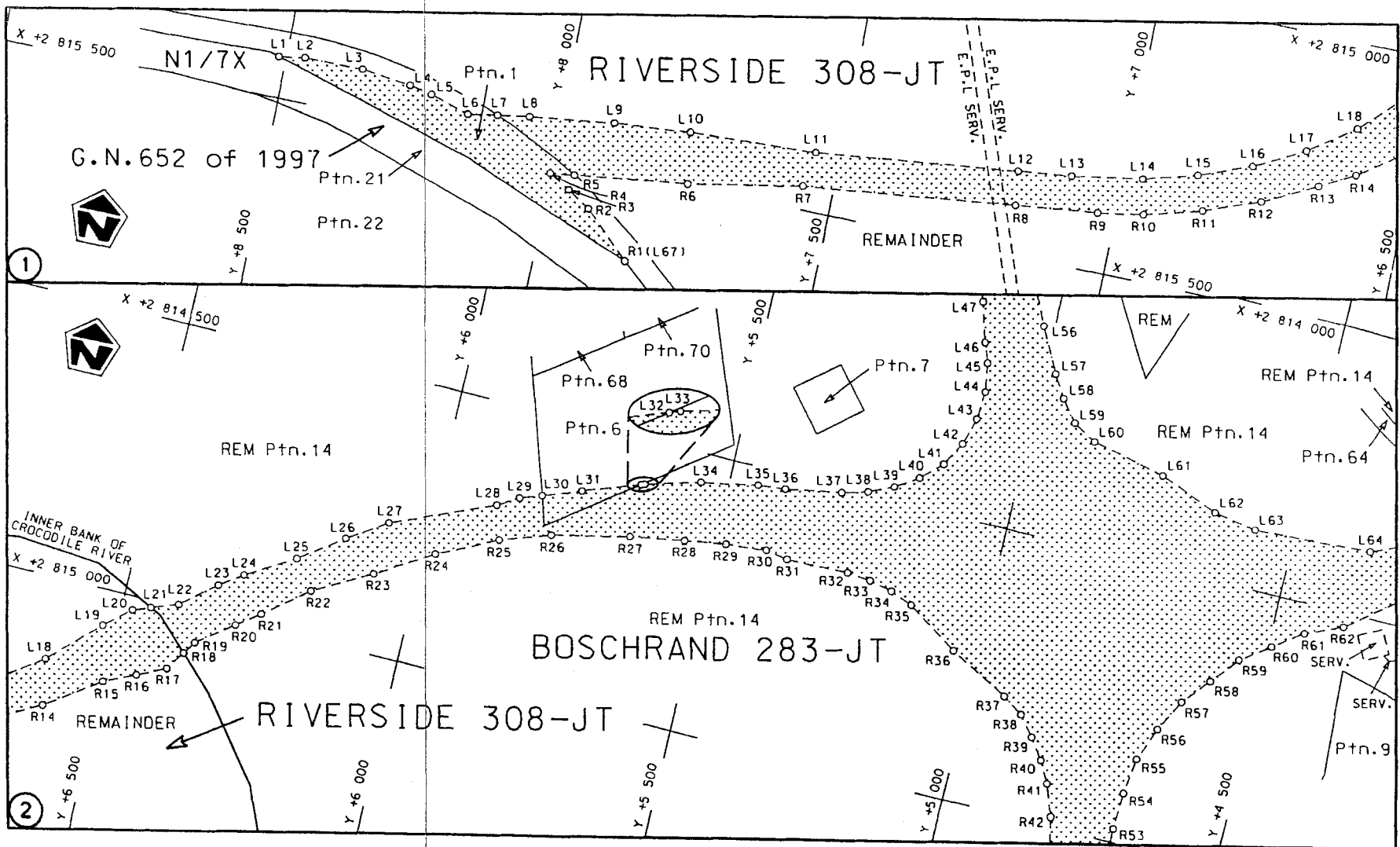
**DECLARATION OF NATIONAL ROAD N4 SECTION 7**

By virtue of section 40 (1)(a) of the South African National Roads Agency Limited and the National Roads Act, 1998 (Act No. 7 of 1998), I hereby declare that the route as indicated on subjoined sheets 1 to 14 of Plan no. P628/07 shall be a National Road.

**(National Road N4 Section 7: Nelspruit bypass)**

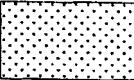
*J. Radebe*

**MINISTER OF TRANSPORT**



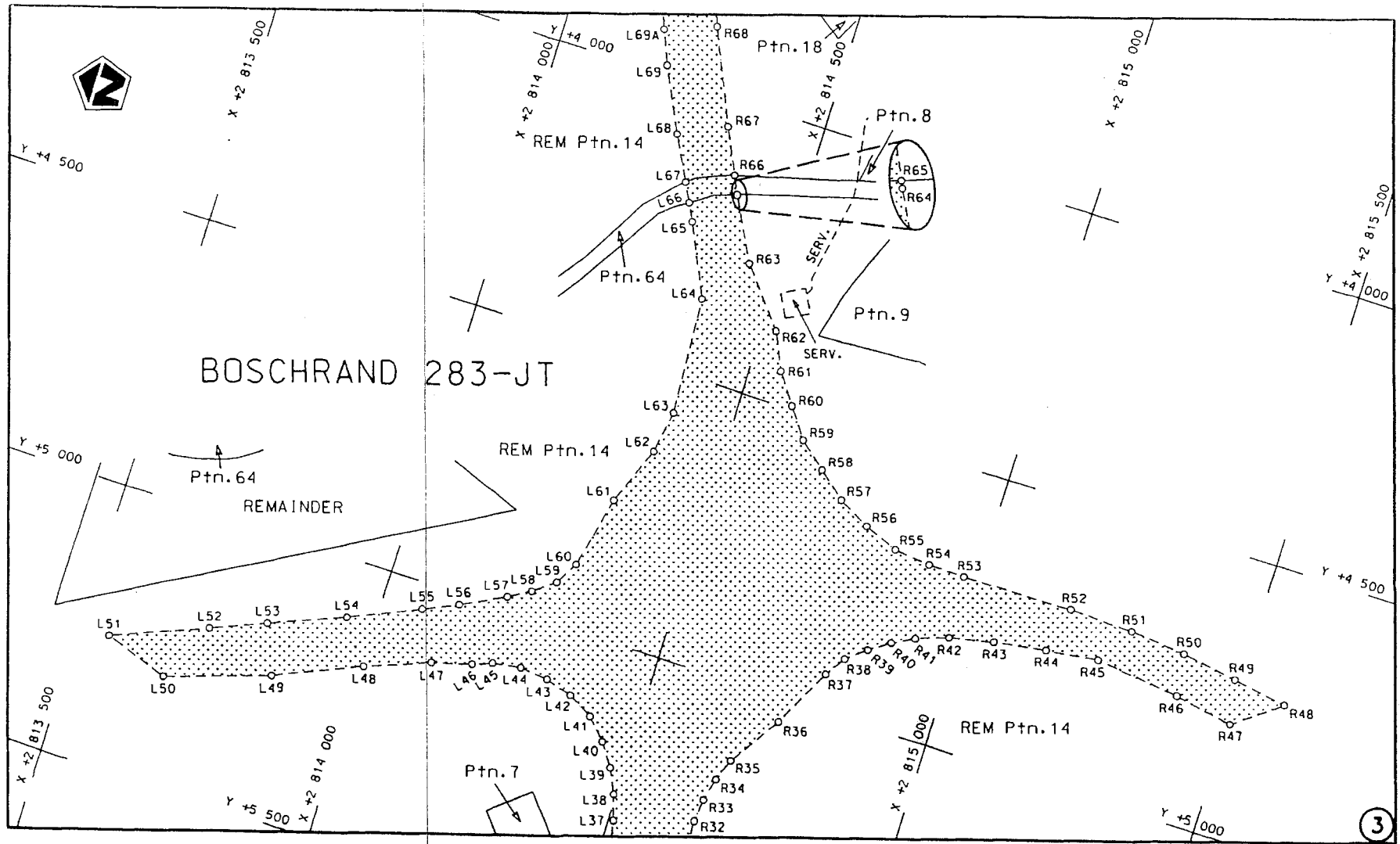
Die Suid Afrikaanse Nasionale Podogentskop Beperk  
 The South African National Roads Agency Limited

Die figuur getoon  
 The figure shown



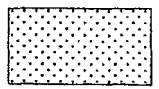
steldie podreserwe voor van 'n gedeelte  
 represents the road reserve of a portion  
 van Nasionale Roete N4 Sektie 7  
 of National Route N4 Sektie Section

Vel Sheet 1 von 14  
 of of  
 Plon P628/07



Die Suid Afrikaanse Nasionale Padogentskop Beperk  
The South African National Roads Agency Limited

Die figuur getoon  
The figure shown



steldie padreserwe voor van 'n gedeelte  
represents the road reserve of a portion  
van Nasionale Roete N4  
of National Route N4

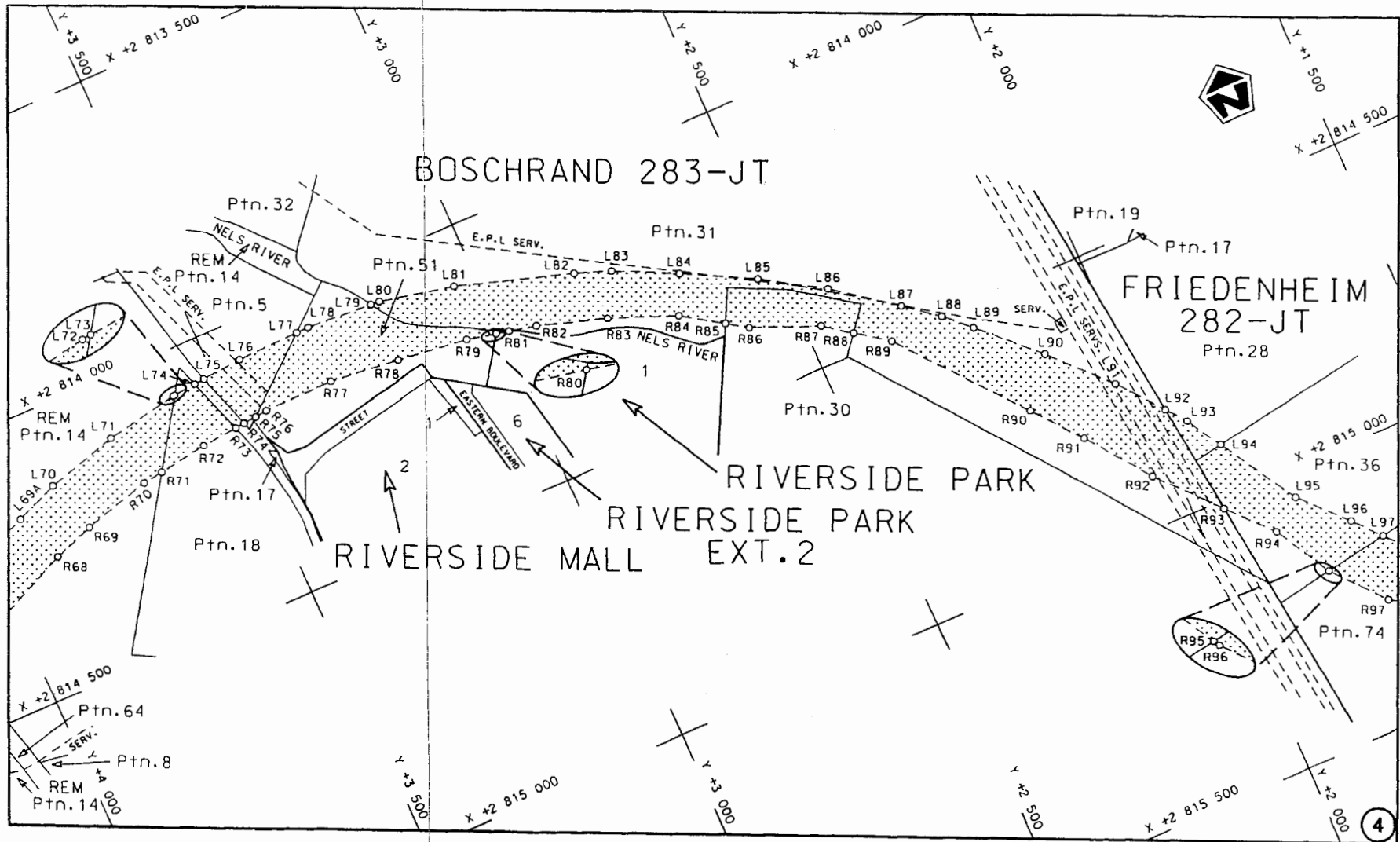
N4

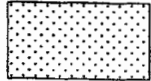
Seksie  
Section

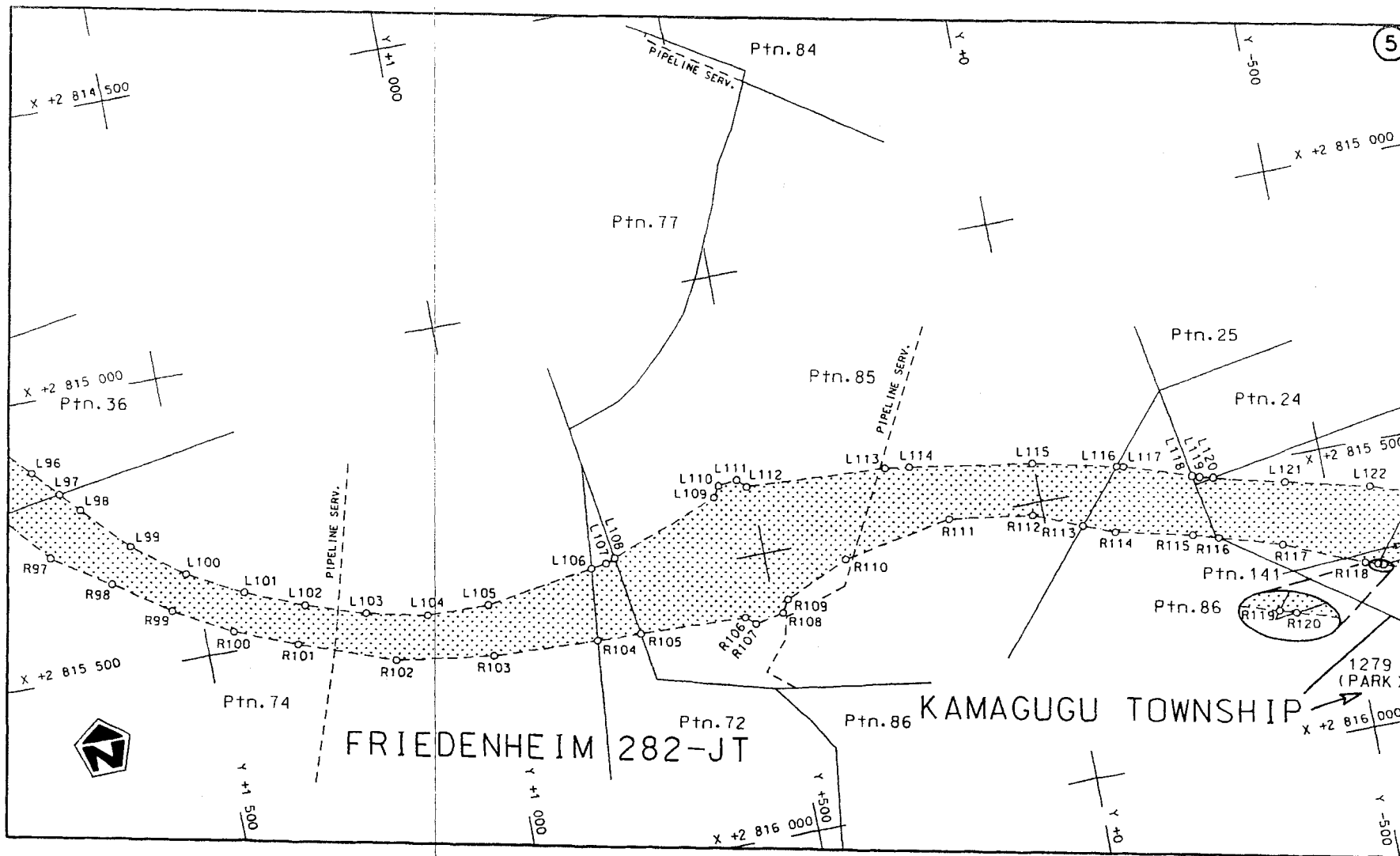
7

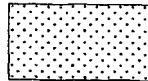
Vel van  
Sheet 2 of 14

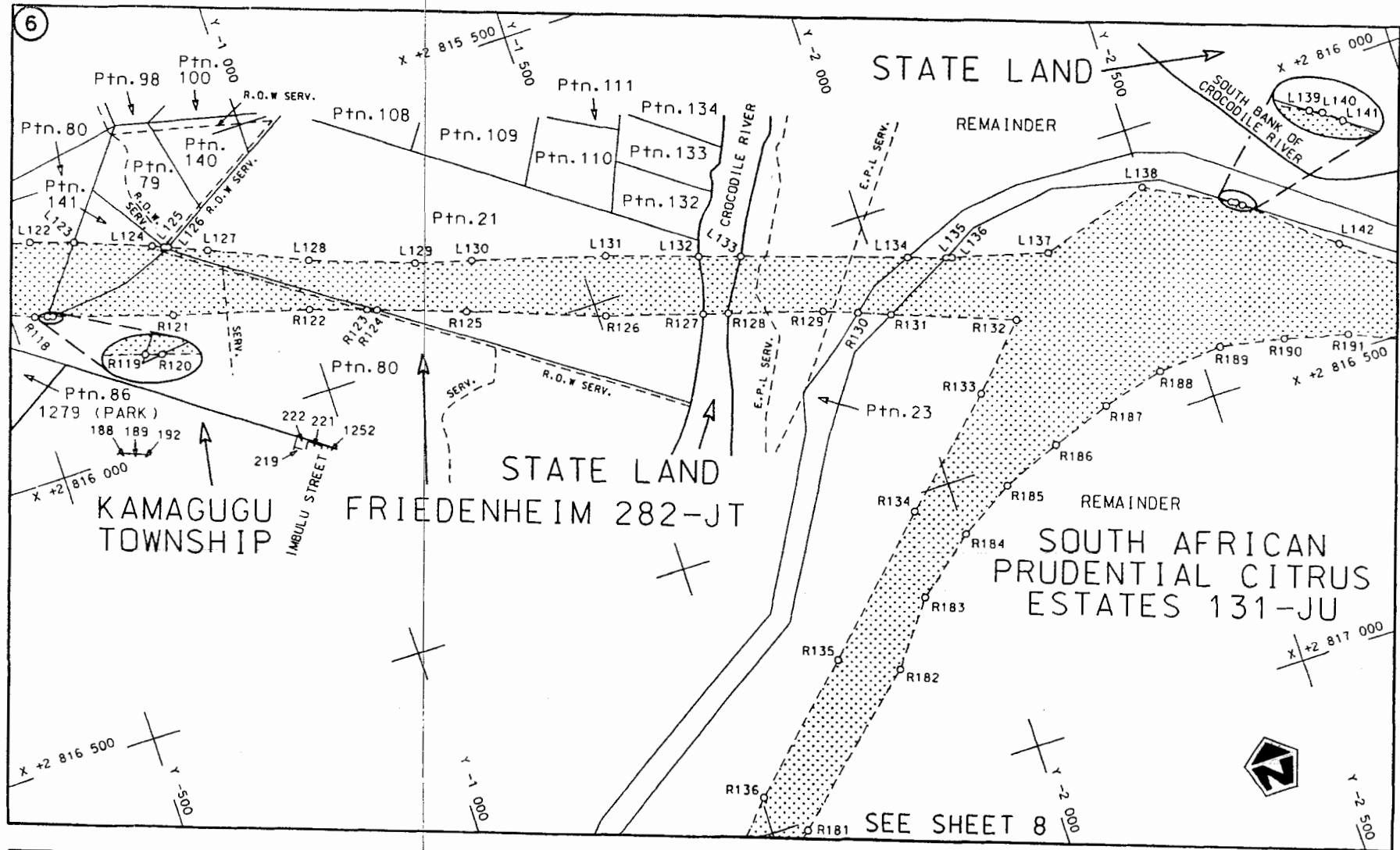
Plan P628/07



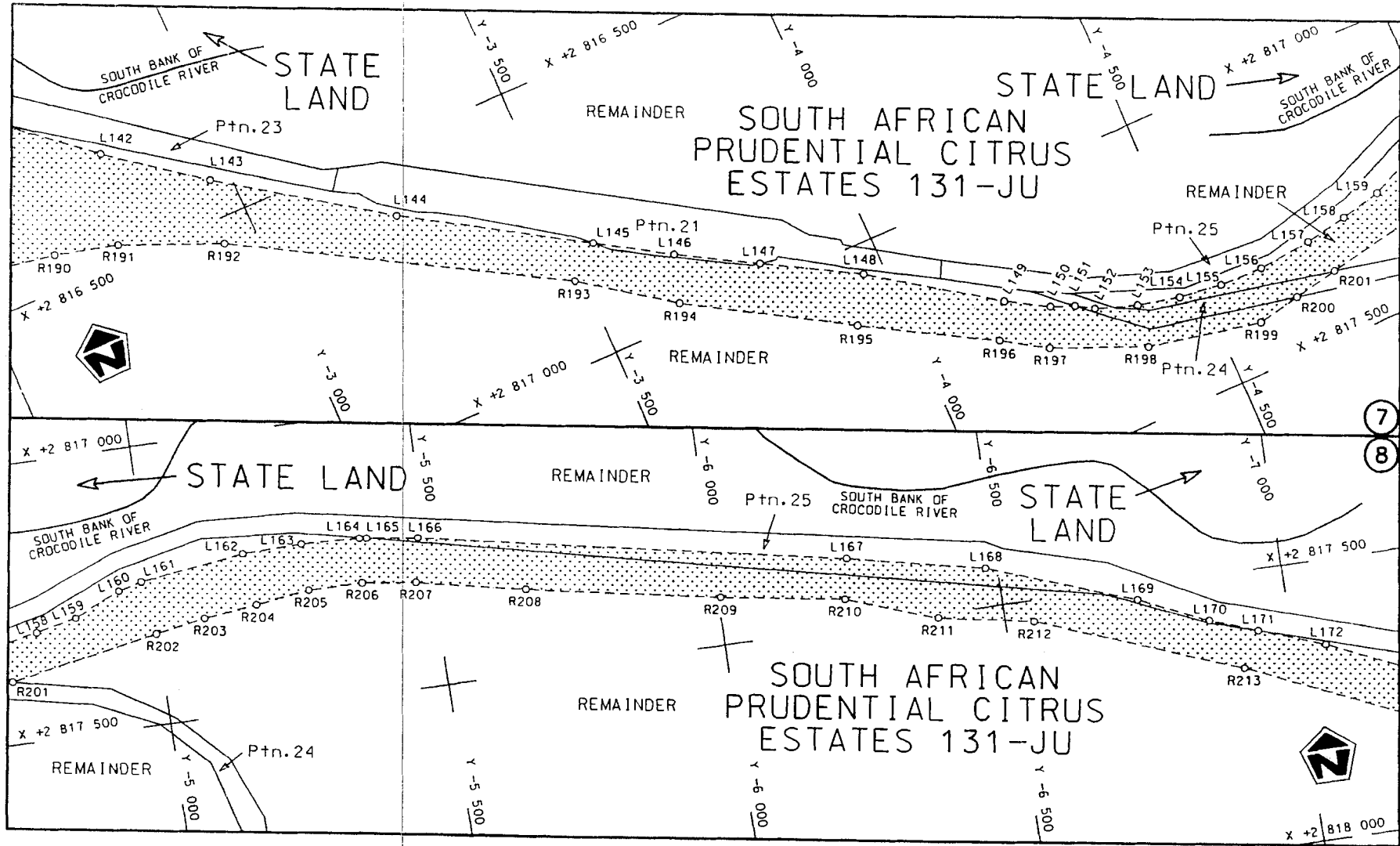
Die Suid Afrikaanse Nasionale Padagentskap Beperk The South African National Roads Agency Limited	Die figuur getoon The figure shown		steldie padreserwe voor van 'n gedeelte represents the road reserve of a portion van Nasionale Roete N4 Sektie of National Route Section	7	Vel Sheet 3 van 14 Plan P628/07
--	---------------------------------------	---	---	---	------------------------------------

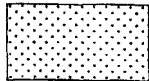


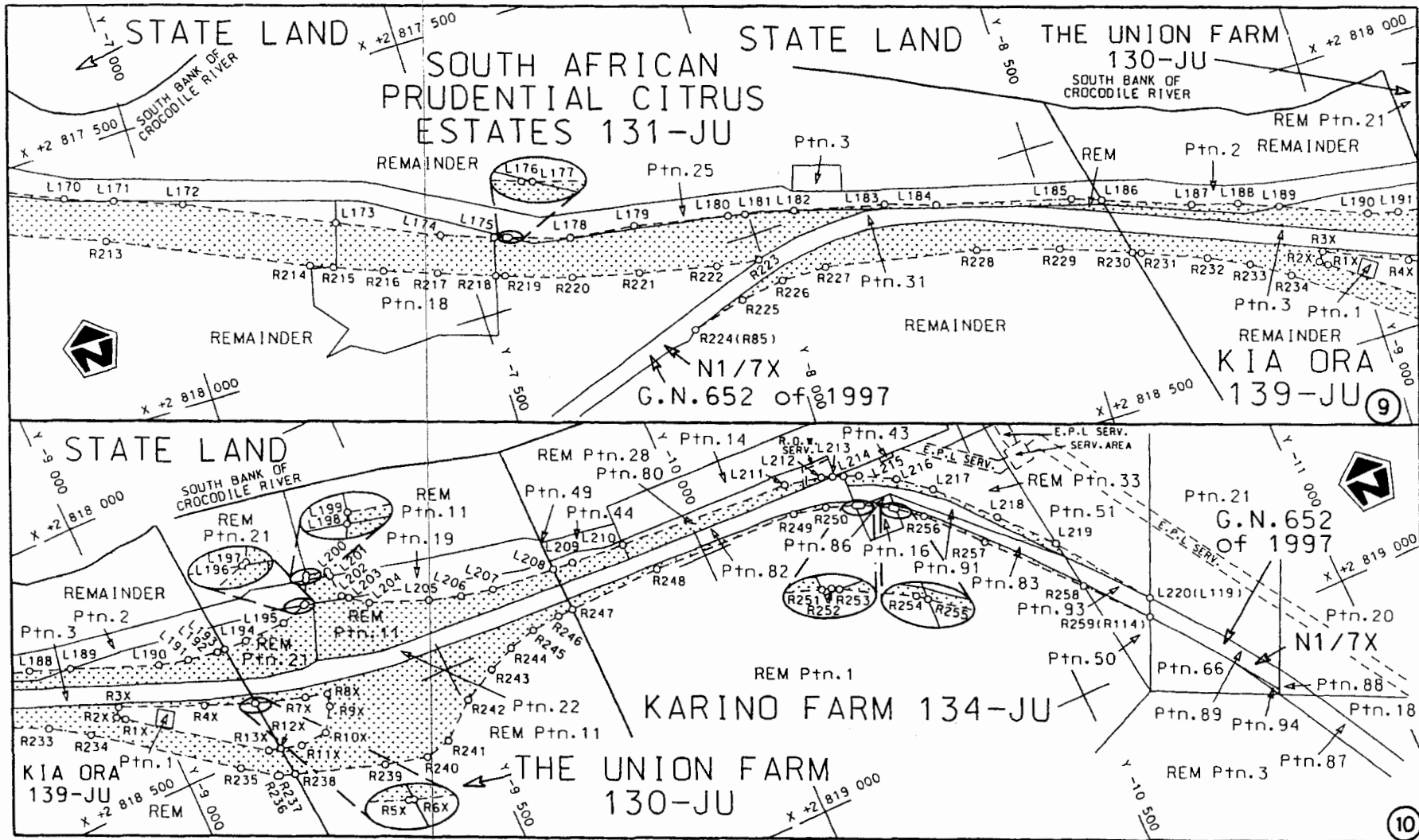
<p>Die Suid Afrikaanse Nasionale Padagentskap Beperk The South African National Roads Agency Limited</p>	<p>Die figuur getoon The figure shown</p> 	<p>steldie padreserwe voor van 'n gedeelte represents the road reserve of a portion van Nasionale Roete N4 of National Route N4</p> <p>Seksie Section 7</p>	<p>Vel van Sheet 4 of 14</p> <p>Plan P628/07</p>
--	---	---	--



Die Suid Afrikaanse Nasionale Padagentskap Beperk The South African National Roads Agency Limited	Die figuur getoon The figure shown		steldie padreserwe voor van 'n gedeelte represents the road reserve of a portion van Nasionale Roete N4 of National Route N4 Seksie Section 7	Vel Sheet 5 van 14 of 14 Plan P628/07
--	---------------------------------------	--	---	--



<p>Die Suid Afrikaanse Nasionale Padagentskap Beperk The South African National Roads Agency Limited</p>	<p>Die figuur getoon The figure shown</p> 	<p>steldie padreserwe voor van 'n gedeelte represents the road reserve of a portion van Nasionale Roete N4 of National Route N4</p> <p>Seksie Section</p> <p>7</p>	<p>Vel Sheet 6 van 14 of 14</p> <p>Plan P628/07</p>
--	---	--	---



Die Suid Afrikaanse Nasionale Padagentskap Beperk  
The South African National Roads Agency Limited

Die figuur getoon  
The figure shown

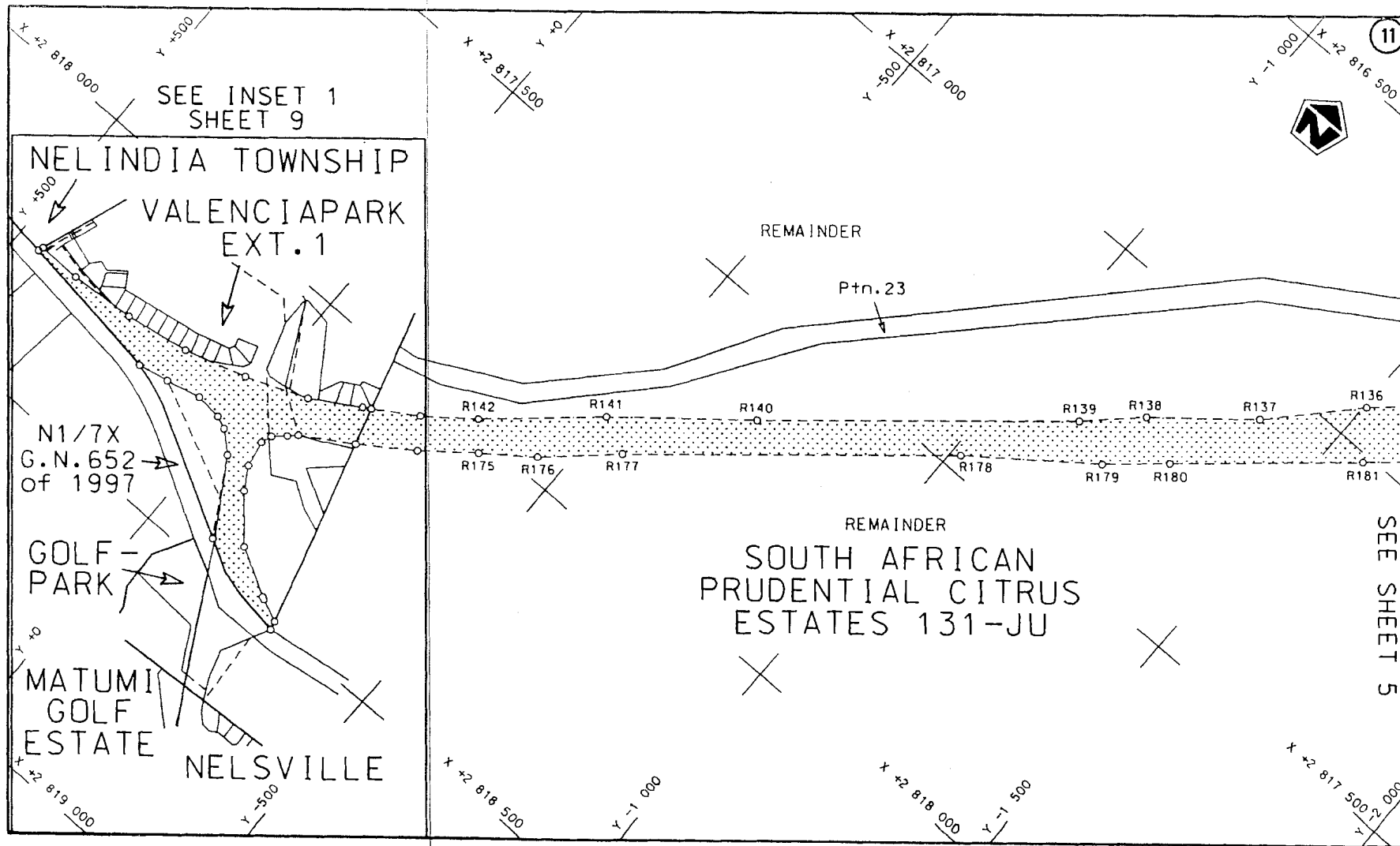


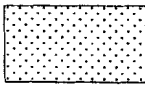
steldie padreserwe voor van 'n gedeelte  
represents the road reserve of a portion  
van Nasionale Roete N4  
of National Route N4

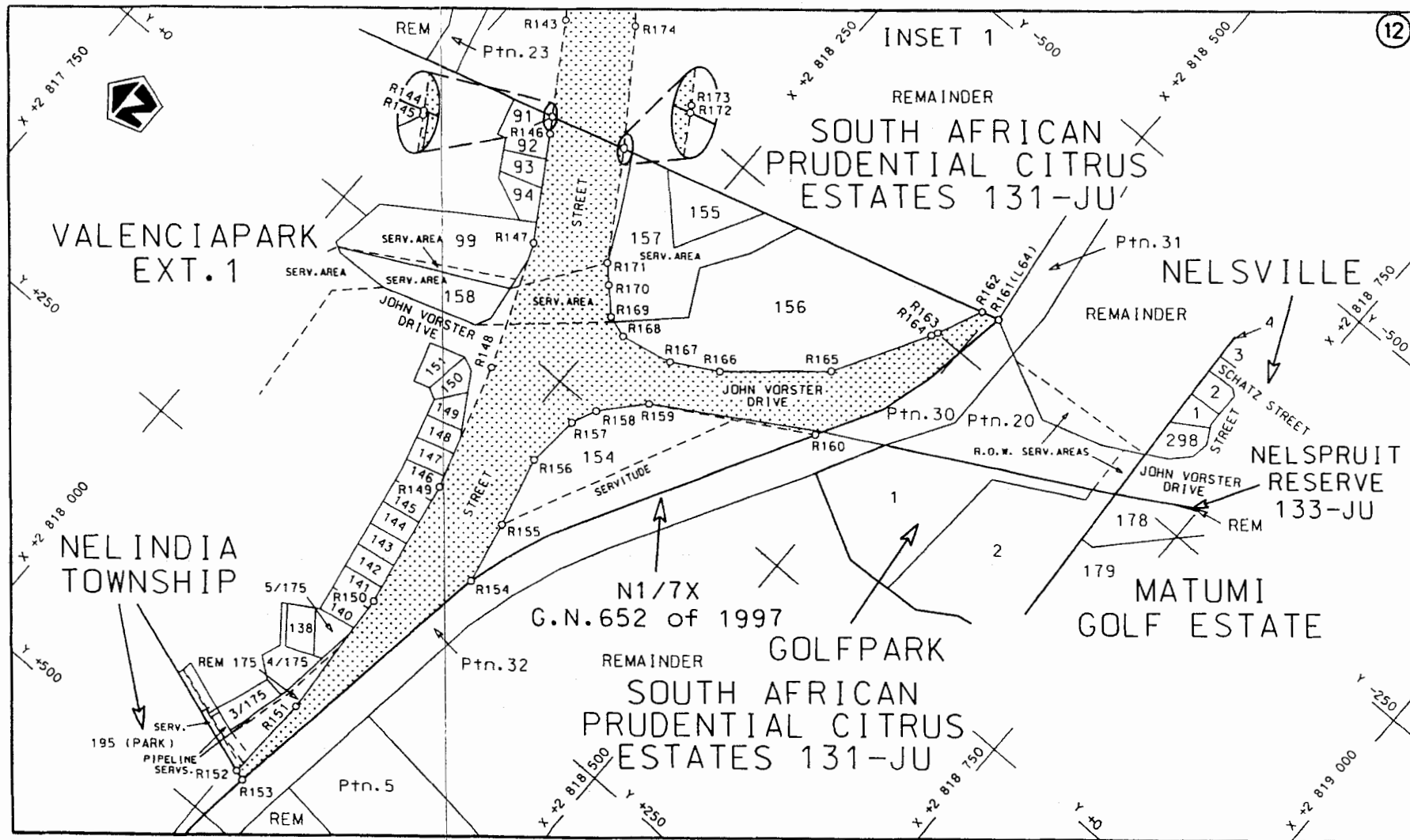
7


Vel Sheet 7 van 14  
of of  
Plan P628/07





<p>Die Suid Afrikaanse Nasionale Padagentskap Beperk The South African National Roads Agency Limited</p>	<p>Die figuur getoon The figure shown</p> 	<p>stel die padreserwe voor van 'n gedeelte represents the road reserve of a portion von Nasionale Roete N4 Seksie 7 of National Route N4 Section 7</p>	<p>Vel Sheet 8 van 14 Plan P628/07</p>
--	---	---	--



Die Suid Afrikaanse Nasionale Padagentskop Beperk The South African National Roads Agency Limited	Die figuur getoon The figure shown		steldie padreserwe voor van 'n gedeelte represents the road reserve of a portion van Nasionale Roete N4 of National Route Section 7	Vet Sheet 9 van of 14 Plan P628/07
--	---------------------------------------	---	--	---------------------------------------

PADRESERWE KOÖRDINATE				/	ROAD RESERVE CO-ORDINATES			
LINKERKANT/LEFT HAND SIDE					REGTERKANT/RIGHT HAND SIDE			
	Y	X	WG	31°	Y	X		
L1	8 513.005	2 815 426.725		R1	7 839.920	2 815 656.610		
L2	8 467.389	2 815 419.980		R2	7 921.381	2 815 577.696		
L3	8 364.012	2 815 418.250		R3	7 962.204	2 815 551.564		
L4	8 275.450	2 815 428.335		R4	7 999.852	2 815 528.818		
L5	8 234.951	2 815 436.462		R5	7 957.556	2 815 523.254		
L6	8 165.430	2 815 457.310		R6	7 756.776	2 815 496.842		
L7	8 112.896	2 815 447.996		R7	7 554.035	2 815 457.679		
L8	8 056.170	2 815 437.938		R8	7 176.860	2 815 411.436		
L9	7 906.462	2 815 418.173		R9	7 032.513	2 815 393.746		
L10	7 769.957	2 815 405.769		R10	6 952.331	2 815 379.735		
L11	7 543.714	2 815 393.949		R11	6 850.247	2 815 351.123		
L12	7 184.404	2 815 349.897		R12	6 751.355	2 815 312.727		
L13	7 090.111	2 815 338.336		R13	6 657.299	2 815 263.574		
L14	6 966.727	2 815 316.759		R14	6 596.453	2 815 230.216		
L15	6 871.121	2 815 289.672		R15	6 501.505	2 815 163.727		
L16	6 778.713	2 815 253.104		R16	6 446.456	2 815 137.278		
L17	6 691.186	2 815 206.124		R17	6 396.261	2 815 112.672		
L18	6 610.159	2 815 148.949		R18	6 372.988	2 815 078.290		
L19	6 524.591	2 815 065.063		R19	6 357.611	2 815 055.574		
L20	6 479.634	2 815 024.934		R20	6 294.246	2 815 006.710		
L21	6 448.778	2 815 013.226		R21	6 254.427	2 814 976.461		
L22	6 401.961	2 814 995.463		R22	6 178.160	2 814 913.978		
L23	6 341.029	2 814 943.300		R23	6 077.196	2 814 855.647		
L24	6 300.379	2 814 914.179		R24	5 978.652	2 814 793.935		
L25	6 216.454	2 814 862.076		R25	5 874.697	2 814 741.175		
L26	6 140.442	2 814 805.883		R26	5 786.033	2 814 709.246		
L27	6 072.138	2 814 758.886		R27	5 649.984	2 814 678.338		
L28	5 893.483	2 814 680.823		R28	5 553.232	2 814 661.045		
L29	5 856.386	2 814 659.034		R29	5 480.317	2 814 649.502		
L30	5 818.212	2 814 644.626		R30	5 406.654	2 814 642.735		
L31	5 751.389	2 814 619.404		R31	5 366.736	2 814 650.082		
L32	5 652.488	2 814 582.458		R32	5 256.894	2 814 646.754		
L33	5 646.093	2 814 580.069		R33	5 214.821	2 814 651.119		
L34	5 548.928	2 814 551.789		R34	5 173.612	2 814 661.011		
L35	5 448.477	2 814 532.349		R35	5 133.742	2 814 676.617		
L36	5 399.196	2 814 527.072		R36	5 041.609	2 814 738.372		
L37	5 300.513	2 814 508.956		R37	4 934.601	2 814 793.989		
L38	5 255.098	2 814 495.734		R38	4 897.914	2 814 818.223		
L39	5 212.074	2 814 475.880		R39	4 870.630	2 814 852.619		
L40	5 172.511	2 814 448.780		R40	4 845.422	2 814 887.886		
L41	5 136.528	2 814 414.649		R41	4 824.661	2 814 926.507		
L42	5 112.026	2 814 370.839		R42	4 804.751	2 814 983.110		
L43	5 097.794	2 814 322.215		R43	4 787.562	2 815 061.915		
L44	5 093.494	2 814 271.201		R44	4 772.172	2 815 155.117		
L45	5 101.862	2 814 220.375		R45	4 760.965	2 815 248.973		
L46	5 114.523	2 814 185.883		R46	4 778.490	2 815 400.809		
L47	5 134.608	2 814 116.611		R47	4 797.233	2 815 505.732		
L48	5 179.042	2 814 003.630		R48	4 735.385	2 815 588.272		
L49	5 244.907	2 813 851.950		R49	4 719.493	2 815 490.322		
L50	5 307.418	2 813 667.608		R50	4 703.310	2 815 390.572		
L51	5 267.637	2 813 553.953		R51	4 693.014	2 815 290.114		

Vel	10	Van	14	P628/07
Sheet		of		

PADRESERWE KOÖRDINATE				/	ROAD RESERVE CO-ORDINATES			
LINKERKANT/LEFT HAND SIDE					REGTERKANT/RIGHT HAND SIDE			
	Y	X	WG	31°	Y	X		
L52	5 198.963	2 813 721.418			R52	4 688.309	2 815 175.283	
L53	5 157.408	2 813 816.794			R53	4 692.037	2 814 975.420	
L54	5 103.547	2 813 949.018			R54	4 689.393	2 814 909.675	
L55	5 047.488	2 814 072.153			R55	4 681.053	2 814 844.633	
L56	5 019.034	2 814 131.832			R56	4 656.964	2 814 783.761	
L57	4 978.858	2 814 209.334			R57	4 626.180	2 814 726.973	
L58	4 955.372	2 814 248.889			R58	4 584.937	2 814 678.071	
L59	4 926.141	2 814 286.463			R59	4 544.496	2 814 629.456	
L60	4 884.613	2 814 309.750			R60	4 493.546	2 814 592.116	
L61	4 753.171	2 814 338.689			R61	4 442.402	2 814 555.047	
L62	4 647.398	2 814 380.129			R62	4 377.320	2 814 525.591	
L63	4 570.872	2 814 393.366			R63	4 275.892	2 814 443.723	
L64	4 363.343	2 814 381.611			R64	4 164.266	2 814 385.587	
L65	4 234.724	2 814 323.292			R65	4 162.927	2 814 384.949	
L66	4 203.520	2 814 307.036			R66	4 131.333	2 814 369.889	
L67	4 170.162	2 814 289.658			R67	4 051.380	2 814 331.778	
L68	4 092.162	2 814 249.023			R68	3 889.135	2 814 260.966	
L69	3 982.487	2 814 195.804			R69	3 816.079	2 814 234.860	
L70	3 844.945	2 814 141.312			R70	3 692.867	2 814 202.307	
L71	3 714.363	2 814 104.951			R71	3 656.008	2 814 196.839	
L72	3 580.961	2 814 080.373			R72	3 566.904	2 814 183.620	
L73	3 578.169	2 814 080.109			R73	3 502.519	2 814 177.529	
L74	3 536.743	2 814 076.190			R74	3 485.326	2 814 175.903	
L75	3 517.699	2 814 074.388			R75	3 461.665	2 814 173.665	
L76	3 445.886	2 814 067.595			R76	3 440.333	2 814 171.647	
L77	3 333.104	2 814 064.461			R77	3 313.178	2 814 169.081	
L78	3 310.159	2 814 063.824			R78	3 186.776	2 814 182.509	
L79	3 190.706	2 814 072.160			R79	3 060.606	2 814 197.648	
L80	3 174.639	2 814 073.281			R80	3 008.480	2 814 208.850	
L81	3 041.842	2 814 101.462			R81	2 985.269	2 814 213.838	
L82	2 836.138	2 814 164.736			R82	2 936.126	2 814 224.399	
L83	2 773.113	2 814 188.054			R83	2 815.014	2 814 263.951	
L84	2 664.124	2 814 242.039			R84	2 696.529	2 814 311.116	
L85	2 538.842	2 814 307.226			R85	2 625.535	2 814 357.385	
L86	2 431.508	2 814 374.273			R86	2 589.542	2 814 380.843	
L87	2 324.570	2 814 454.694			R87	2 470.164	2 814 430.460	
L88	2 266.607	2 814 501.228			R88	2 422.625	2 814 464.867	
L89	2 222.638	2 814 541.816			R89	2 366.214	2 814 505.695	
L90	2 126.284	2 814 635.590			R90	2 191.341	2 814 718.441	
L91	2 033.425	2 814 734.069			R91	2 124.367	2 814 801.831	
L92	1 970.600	2 814 812.930			R92	2 040.070	2 814 912.233	
L93	1 943.705	2 814 846.691			R93	1 946.797	2 815 015.015	
L94	1 906.058	2 814 909.035			R94	1 879.004	2 815 089.720	
L95	1 822.408	2 815 047.564			R95	1 821.670	2 815 191.123	
L96	1 748.679	2 815 126.156			R96	1 821.323	2 815 191.737	
L97	1 707.227	2 815 172.259			R97	1 744.372	2 815 279.854	
L98	1 676.758	2 815 206.146			R98	1 646.299	2 815 344.102	
L99	1 601.485	2 815 284.926			R99	1 550.449	2 815 409.089	
L100	1 513.957	2 815 350.100			R100	1 449.154	2 815 465.132	
L101	1 417.297	2 815 400.808			R101	1 341.622	2 815 507.655	
L102	1 316.420	2 815 441.842			R102	1 176.074	2 815 568.207	

Vel	11	Van	14	P628/07
Sheet		of		

PADRESERWE KOÖRDINATE				ROAD RESERVE CO-ORDINATES			
LINKERKANT/LEFT HAND SIDE				REGTERKANT/RIGHT HAND SIDE			
	Y	X	WG 31°		Y	X	
L103	1 213.112	2 815 475.711	R103	1 005.819	2 815 591.682		
L104	1 106.927	2 815 498.784	R104	819.617	2 815 597.029		
L105	998.228	2 815 500.711	R105	742.592	2 815 599.241		
L106	806.454	2 815 470.351	R106	553.981	2 815 604.657		
L107	779.378	2 815 466.065	R107	537.665	2 815 619.726		
L108	762.531	2 815 459.770	R108	486.793	2 815 608.946		
L109	568.287	2 815 387.185	R109	473.691	2 815 587.938		
L110	555.869	2 815 367.845	R110	359.218	2 815 537.387		
L111	522.047	2 815 363.568	R111	165.702	2 815 500.180		
L112	506.821	2 815 378.348	R112	18.927	2 815 520.710		
L113	259.521	2 815 391.841	R113	-64.635	2 815 555.082		
L114	217.239	2 815 397.210	R114	-118.056	2 815 577.056		
L115	1.709	2 815 430.896	R115	-251.524	2 815 606.970		
L116	-143.108	2 815 463.214	R116	-295.758	2 815 620.414		
L117	-154.787	2 815 465.820	R117	-404.654	2 815 653.510		
L118	-271.443	2 815 504.055	R118	-541.899	2 815 710.929		
L119	-284.135	2 815 508.215	R119	-563.413	2 815 717.689		
L120	-307.425	2 815 514.020	R120	-572.995	2 815 720.700		
L121	-430.089	2 815 544.593	R121	-779.332	2 815 785.530		
L122	-576.547	2 815 579.445	R122	-1 013.373	2 815 851.175		
L123	-652.501	2 815 604.350	R123	-1 111.717	2 815 884.853		
L124	-783.328	2 815 654.859	R124	-1 128.453	2 815 890.584		
L125	-803.088	2 815 662.796	R125	-1 278.287	2 815 941.894		
L126	-810.287	2 815 665.688	R126	-1 513.288	2 816 027.523		
L127	-876.306	2 815 692.207	R127	-1 680.418	2 816 078.101		
L128	-1 041.593	2 815 765.714	R128	-1 723.094	2 816 091.016		
L129	-1 220.347	2 815 830.328	R129	-1 886.687	2 816 140.524		
L130	-1 317.057	2 815 856.378	R130	-1 944.888	2 816 162.472		
L131	-1 547.754	2 815 923.151	R131	-2 000.157	2 816 183.314		
L132	-1 706.634	2 815 975.937	R132	-2 208.643	2 816 261.935		
L133	-1 778.272	2 815 999.738	R133	-2 106.921	2 816 367.994		
L134	-2 061.827	2 816 093.945	R134	-1 928.269	2 816 528.830		
L135	-2 126.144	2 816 115.314	R135	-1 711.486	2 816 743.541		
L136	-2 136.132	2 816 118.632	R136	-1 504.953	2 816 936.372		
L137	-2 302.031	2 816 163.175	R137	-1 376.288	2 817 075.530		
L138	-2 498.434	2 816 106.385	R138	-1 221.552	2 817 204.078		
L139	-2 641.321	2 816 178.434	R139	-1 136.282	2 817 287.203		
L140	-2 648.470	2 816 182.039	R140	-704.763	2 817 659.616		
L141	-2 658.377	2 816 190.344	R141	-498.394	2 817 830.596		
L142	-2 801.244	2 816 310.107	R142	-329.866	2 817 982.765		
L143	-2 963.280	2 816 430.234	R143	-248.699	2 818 046.411		
L144	-3 241.686	2 816 622.043	R144	-174.774	2 818 093.259		
L145	-3 541.613	2 816 807.213	R145	-174.641	2 818 093.344		
L146	-3 667.148	2 816 884.717	R146	-161.595	2 818 101.611		
L147	-3 801.370	2 816 961.446	R147	-77.932	2 818 153.188		
L148	-3 962.420	2 817 053.511	R148	30.507	2 818 195.817		
L149	-4 172.150	2 817 197.381	R149	141.870	2 818 230.210		
L150	-4 242.354	2 817 238.332	R150	256.617	2 818 251.297		
L151	-4 282.873	2 817 255.259	R151	373.003	2 818 259.750		
L152	-4 313.984	2 817 274.074	R152	451.218	2 818 257.479		
L153	-4 386.396	2 817 299.676	R153	454.318	2 818 266.459		

Vel	12	Van	14	P628/07
Sheet		of		

PADRESERWE KOÖRDINATE				/ ROAD RESERVE CO-ORDINATES			
LINKERKANT/LEFT HAND SIDE				REGTERKANT/RIGHT HAND SIDE			
	Y	X	WG 31°		Y	X	
L154	-4 461.098	2 817 317.529		R154	186.817	2 818 304.315	
L155	-4 537.262	2 817 327.434		R155	131.296	2 818 292.934	
L156	-4 614.045	2 817 329.282		R156	68.840	2 818 277.651	
L157	-4 709.611	2 817 320.168		R157	21.570	2 818 281.521	
L158	-4 786.548	2 817 305.237		R158	-0.500	2 818 290.952	
L159	-4 859.578	2 817 289.249		R159	-35.680	2 818 322.421	
L160	-4 942.570	2 817 252.364		R160	-110.470	2 818 451.431	
L161	-4 985.172	2 817 241.294		R161	-294.264	2 818 507.689	
L162	-5 172.488	2 817 216.437		R162	-289.890	2 818 492.321	
L163	-5 277.184	2 817 212.686		R163	-250.480	2 818 474.751	
L164	-5 381.671	2 817 216.942		R164	-245.370	2 818 471.889	
L165	-5 394.389	2 817 218.692		R165	-163.230	2 818 425.891	
L166	-5 485.267	2 817 231.197		R166	-98.610	2 818 350.891	
L167	-6 237.514	2 817 376.868		R167	-76.280	2 818 312.210	
L168	-6 479.445	2 817 429.537		R168	-66.780	2 818 265.739	
L169	-6 737.507	2 817 526.088		R169	-72.860	2 818 246.382	
L170	-6 859.337	2 817 581.117		R170	-93.120	2 818 227.111	
L171	-6 941.734	2 817 611.143		R171	-107.230	2 818 213.690	
L172	-7 056.853	2 817 653.094		R172	-193.952	2 818 159.755	
L173	-7 302.595	2 817 763.111		R173	-194.928	2 818 159.149	
L174	-7 472.189	2 817 839.037		R174	-284.316	2 818 096.545	
L175	-7 560.247	2 817 869.120		R175	-368.991	2 818 028.255	
L176	-7 579.981	2 817 875.862		R176	-452.453	2 817 964.240	
L177	-7 585.342	2 817 877.543		R177	-562.151	2 817 861.760	
L178	-7 688.544	2 817 909.906		R178	-1 016.616	2 817 470.018	
L179	-7 801.693	2 817 923.860		R179	-1 216.196	2 817 318.648	
L180	-7 965.920	2 817 956.045		R180	-1 306.036	2 817 239.078	
L181	-7 994.806	2 817 961.706		R181	-1 562.944	2 817 014.377	
L182	-8 079.172	2 817 981.738		R182	-1 811.992	2 816 794.026	
L183	-8 234.447	2 818 018.607		R183	-1 895.459	2 816 683.711	
L184	-8 321.357	2 818 045.690		R184	-2 001.478	2 816 596.731	
L185	-8 550.753	2 818 105.856		R185	-2 098.591	2 816 536.167	
L186	-8 600.429	2 818 123.737		R186	-2 204.855	2 816 494.872	
L187	-8 750.241	2 818 177.662		R187	-2 311.986	2 816 457.278	
L188	-8 827.775	2 818 200.004		R188	-2 423.373	2 816 428.939	
L189	-8 894.925	2 818 226.587		R189	-2 538.851	2 816 420.660	
L190	-9 040.106	2 818 284.061		R190	-2 652.656	2 816 441.836	
L191	-9 091.758	2 818 297.744		R191	-2 764.055	2 816 470.676	
L192	-9 145.179	2 818 305.685		R192	-2 940.253	2 816 545.076	
L193	-9 158.864	2 818 306.163		R193	-3 484.051	2 816 855.903	
L194	-9 199.138	2 818 307.568		R194	-3 640.519	2 816 967.191	
L195	-9 272.350	2 818 306.018		R195	-3 915.529	2 817 130.827	
L196	-9 317.476	2 818 291.131		R196	-4 135.745	2 817 257.412	
L197	-9 320.943	2 818 289.987		R197	-4 210.901	2 817 304.895	
L198	-9 340.536	2 818 251.884		R198	-4 373.569	2 817 374.317	
L199	-9 344.342	2 818 244.481		R199	-4 573.926	2 817 415.595	
L200	-9 381.092	2 818 253.600		R200	-4 651.398	2 817 401.278	
L201	-9 381.907	2 818 262.343		R201	-4 731.272	2 817 386.518	
L202	-9 385.752	2 818 303.603		R202	-4 998.161	2 817 337.199	
L203	-9 396.018	2 818 311.816		R203	-5 088.148	2 817 322.007	
L204	-9 425.052	2 818 335.046		R204	-5 183.118	2 817 310.607	

Vel	13	Van	14	P628/07
Sheet		of		

PADRESERWE KOÖRDINATE				ROAD RESERVE CO-ORDINATES			
LINKERKANT/LEFT HAND SIDE				REGTERKANT/RIGHT HAND SIDE			
	Y	X	WG 31°		Y	X	
L205	-9 522.907	2 818	373.247	R205	-5 278.205	2 817	297.660
L206	-9 577.040	2 818	390.747	R206	-5 374.449	2 817	298.450
L207	-9 632.852	2 818	401.730	R207	-5 469.956	2 817	311.336
L208	-9 745.717	2 818	412.792	R208	-5 661.021	2 817	350.865
L209	-9 780.705	2 818	416.221	R209	-6 005.156	2 817	414.704
L210	-9 875.585	2 818	423.229	R210	-6 223.444	2 817	450.240
L211	-10 179.967	2 818	445.712	R211	-6 383.144	2 817	507.137
L212	-10 244.665	2 818	459.892	R212	-6 549.827	2 817	537.338
L213	-10 263.076	2 818	467.036	R213	-6 907.261	2 817	673.995
L214	-10 281.077	2 818	474.020	R214	-7 236.039	2 817	820.912
L215	-10 306.377	2 818	483.837	R215	-7 274.806	2 817	836.171
L216	-10 363.666	2 818	516.923	R216	-7 357.031	2 817	868.536
L217	-10 415.168	2 818	558.394	R217	-7 446.487	2 817	900.633
L218	-10 497.327	2 818	648.433	R218	-7 542.281	2 817	934.786
L219	-10 571.279	2 818	733.252	R219	-7 558.081	2 817	940.419
L220	-10 680.620	2 818	889.660	R220	-7 670.569	2 817	977.800
				R221	-7 785.973	2 818	005.355
				R222	-7 919.744	2 818	034.078
				R223	-7 993.755	2 818	045.689
				R224	-7 848.890	2 818	132.260
				R225	-7 944.178	2 818	105.450
				R226	-8 022.463	2 818	093.555
				R227	-8 101.627	2 818	092.428
				R228	-8 365.431	2 818	142.443
				R229	-8 504.008	2 818	183.120
R256	-10 380.907	2 818	594.812	R230	-8 624.618	2 818	226.990
R257	-10 458.585	2 818	680.041	R231	-8 639.713	2 818	232.481
R258	-10 582.639	2 818	822.379	R232	-8 747.733	2 818	275.709
R259	-10 666.220	2 818	920.760	R233	-8 815.437	2 818	308.065
				R234	-8 878.273	2 818	348.799
				R235	-9 095.118	2 818	509.911
				R236	-9 146.961	2 818	548.460
				R237	-9 151.533	2 818	549.962
				R238	-9 176.488	2 818	558.158
				R239	-9 328.495	2 818	608.088
				R240	-9 402.746	2 818	626.162
				R241	-9 447.915	2 818	617.107
				R242	-9 509.986	2 818	565.070
RX1	-8 945.367	2 818	348.716	R243	-9 569.638	2 818	532.679
RX2	-8 932.410	2 818	339.082	R244	-9 616.960	2 818	511.552
RX3	-8 943.606	2 818	324.024	R245	-9 667.022	2 818	498.160
RX4	-9 083.803	2 818	383.667	R246	-9 718.527	2 818	492.700
RX5	-9 165.601	2 818	416.863	R247	-9 745.539	2 818	491.990
RX6	-9 166.648	2 818	417.188	R248	-9 912.091	2 818	487.612
RX7	-9 249.947	2 818	443.042	R249	-10 172.930	2 818	497.512
RX8	-9 288.046	2 818	453.502	R250	-10 229.590	2 818	510.564
RX9	-9 282.339	2 818	474.929	R251	-10 278.844	2 818	528.207
RX10	-9 256.261	2 818	514.552	R252	-10 284.369	2 818	530.186
RX11	-9 208.917	2 818	517.464	R253	-10 288.446	2 818	532.424
RX12	-9 173.008	2 818	507.899	R254	-10 335.606	2 818	558.309
RX13	-9 151.880	2 818	502.271	R255	-10 341.065	2 818	562.708

Vel	14	Van	14	P628/07
Sheet		of		